

Mrs. Petry
 WHOLESALE and RETAIL
BAKERY
 912 P Str. LINCOLN, NEBR.
 Phone. 142

HER SHOULDER BLADE.
 From tip of toe to flying curl,
 From dainty gown to hat,
 Myrilla is a pretty girl,
 There is no doubt of that;
 If e'er there was a shoulder blade
 Worth going miles to see,
 Why, it belongs to this fair maid,
 This maid adored by me!

But, being so superbly armed,
 This shoulder blade has been
 My sad undoing; by it charmed,
 I sought the maid to win;
 And when I fondly begged that she
 Would name the day to wed,
 She gave the shoulder cold to me,
 And straightway cut me dead!
 —The Jilted.

Beating the Egg Tariff.
 The Tombstone Prospector says:
 Since the duty on eggs has been the
 rule many devices have been thought
 of for manufacturing them. The idea
 of a Nogales man is, however, the only
 feasible scheme up to date. His propo-
 sition is to feed hens on the cheap
 grain of Mexico and have them lay in
 the United States. For this purpose a
 long building will be placed on the
 line, half in Mexico and half in the
 United States. They will feed and
 water in the Mexican end, and when
 they want to lay they go to the further
 end of the building, and in that way
 escape paying the duty. The projector
 of this enterprise came from Maine.

Pertinent.
 The force and value of a remark de-
 pends largely on the age and standing
 of the person who utters it.
 Leslie Robinson is a boy about 4
 years old. His father was employed
 for a few days by two maiden sisters,
 who had some work to be done about
 their place.
 One of them, wishing to see him,
 said to the other, "Where is Robin-
 son?"
 Leslie overheard the question and
 responded at once in a very demure and
 drawing manner:
 "How-would-it-do-to-call-
 him—Mr.—Robinson?"

Romeo's Reflection.
 "See how she leans her cheek upon her
 head;
 Ah, that I were a glove upon that hand,
 That I might touch that cheek; but then I
 fear
 That if I were black kid I'd be snuffed—
 Yes, ruined for good and all beyond reclaim
 From too close contact with her rosy blush,
 Which, like her dresses, she can don and
 doff,
 And which, like newly whitewashed walls,
 Comes off!"

The Nebraska Sanitarium.

Located at College View, Nebr., offers the following inducements to the tired and suffering public who are seeking Health, Rest and Comfort:—

THE institution is situated on an elevated site, overlooking the city of Lincoln, which lies three miles to the northwest, and with which it is connected by an electric street railway.

One of the most healthy locations between the Mississippi River and the Rocky Mountains.

A well regulated institution for the treatment of all chronic diseases.

Water of unusual purity.

Baths of every description, including the *Electric-light* bath.

Scientifically classified dietary.

Laboratory of hygiene for bacteriological and microscopical investigation.

Stomach fluids analyzed for dyspeptics.

Aseptic operating rooms and surgical wards.

Four physicians, well-trained, with large experience in sanitarium medical work.

Trained nurses of both sexes.

Skillful attention given to the treatment of

Diseases of the Stomach and Digestive System.

Diseases of the Eye, Ear, Nose, Throat, and Lungs.

Diseases peculiar to women.

Best of advantages for the treatment of all forms of chronic diseases. Incurable and offensive patients not received.

For circulars giving rates and further information, address,
NEBRASKA SANITARIUM,
 COLLEGE VIEW, NEBRASKA.

ARE YOU GOING TO
Chicago or the East
 THE THROUGH EXPRESS FROM
COLORADO - KANSAS - NEBRASKA,
 VIA OMAHA



AND THE
 Chicago Express from Kansas City

In addition to Pullman Sleepers, Free Chair Cars, and the Best Dining Car Service in the World, are equipped with Buffet Library Smoking Cars furnished in club style and supplied with latest periodicals, illustrated papers and a select library of recent fiction.

ARE YOU GOING TO
Colorado or the West?
 TRY THE "COLORADO FLYER"
 Fast, carries Dining Cars and Pullman Sleepers. Leave Omaha, 6.40 p.m.; Kansas City, 6.30 p.m.; St. Joseph, 4.50 p.m. Arrive at Denver and Colorado Springs, next morning.

JOHN SEBASTIAN, G. P. A.
 Chicago, Ill.

E. W. THOMPSON, A. G. P. A.
 Topeka, Kan.

FRANK H. Barnes, G. P. A.,
 11th and O Streets, Lincoln, Neb.

For official map of city of Los Angeles and N. E. A. pamphlet, address E. B. Slossen.

News and Opinions of Nation Importance.

THE SUN

Alone Contains Both.

Daily, by mail.....\$6 a year
 Daily and Sunday by mail
\$8 a year

THE SUNDAY SUN

is the greatest Sunday newspaper in the world.

Price, 5c a copy. By mail \$2 a year. Address The Sun, New York.

NATIONAL EDUCATIONAL ASSOCIATION MEETING.

For the meeting of the National Educational Association at Los Angeles, Cal., July 11-14 1899, the Union Pacific will make the greatly reduced rate of one fare plus \$2.00 for the round trip.

The excellent service given by the Union Pacific was commented on by all who had the pleasure of using it to the convention at Washington in 1898. This year our educational friends meet in Los Angeles, and members of the Association and others from points East should by all means take the Union Pacific.

The service of the Union Pacific is unexcelled and consists of Palace Sleeping-Cars, Buffet Smoking and Library Cars, Dining Cars, meals a la-carte. Free Reclining-Chair Cars and Ordinary Sleeping Cars.

The Union Pacific is The Route for summer travel.

For full information about tickets, stop-overs, or a finely illustrated book describing "The Overland Route" to the Pacific Coast, call on

E. B. SLOSSON,
 Gen. Agt.

TIME IS MONEY.

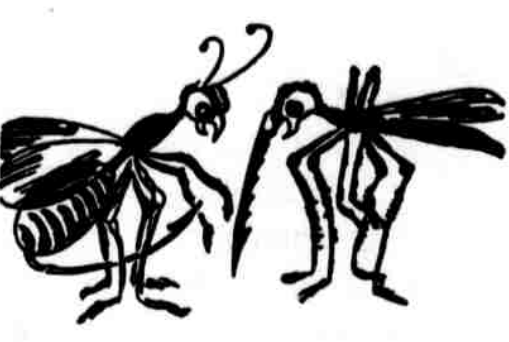
When you are traveling, due consideration should be given to the amount of time spent in making your journey.

The Union Pacific is the best line and makes the fastest time by many hours to Salt Lake City, Portland and California points.

For time tables, folders, illustrated books, pamphlets descriptive of the territory traversed, call at City Office, 1044 O st.

E. B. SLOSSON,
 Gen. Agent.

POINTS WORTH REMEMBERING



If you want the most reliable **Bicycle** to ride, let us show you the superb points of merit in the **Bicycle** carrying this most liberal guarantee on earth

Should defective parts be found in **WITTMANN BICYCLES** we will replace free at our store and pay all transportation charges if any.
H. WITTMANN & Co.

Fine and most difficult repairing is a specialty with us.

HARNESS, BICYCLES, PHONOGRAPHS.

H. WITTMANN & CO

Established 1870
148-145 So. 10th Lincoln, Nebr.

DR. LEONHARDT'S ANTI-PILL
 Cures Constipation, Billiousness, nervousness and the pill habit. Action not followed by constiveness. Doubt it? Try it. Sample free. Druggists, 25c, or address **ANTI-PILL CO., Lincoln, Neb.**

BUCKSTAFF BROS.
 MANUFACTURE
 ... THE NEW LINCOLN STEEL RANGE ...

Warranted to be the Best and Most Satisfactory Range ever made. Any kind of fuel may be used, that one item alone being economy.

These Ranges would be a comfort in any home.

FOR WHAT THEY ARE—They are the CHEAPEST you can buy. At least give one a trial.

We warrant you complete satisfaction. Write us for full particulars.

736 O St., LINCOLN, Neb.