

FASHIONS.

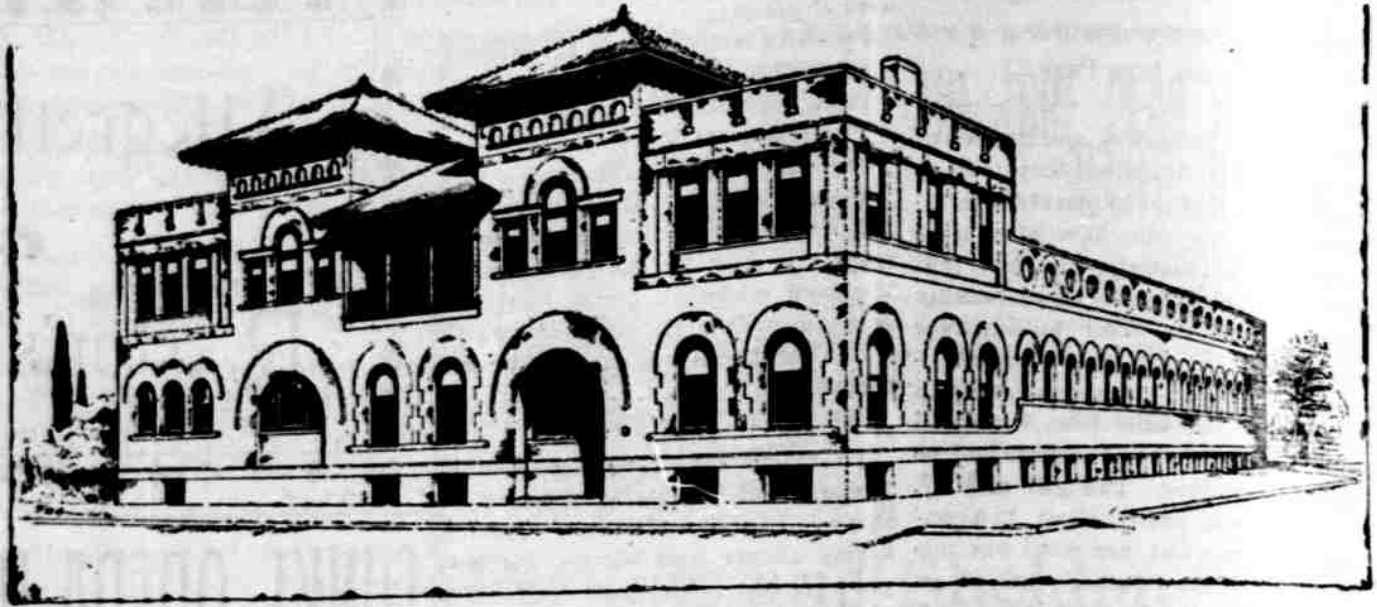
The principal novelty this year is in the different weaves of straw that are used in the construction of the hats. The soft satin-finished braid is used in all kinds of hats. Some of the weaves are open work; others are quite close together. There are even many in what used to be called Neapolitan straw, a very fine weave that looks like a horse-hair, and often black and white are put together in these Neapolitan straw hats, in which there is an exquisite shade of a very pale gray. Using these different weaves and straw by the yard, the milliners are able to secure a much better and more distinctive style for their individual customers. The hats, so to speak, can be built to suit the head. Of course this is not a novelty, but has been done for the last two or three years; but the straw itself is different this year.

One very odd and exceedingly effective hat is made of a pale lemon-color straw with an inside satin finish. The crown of the hat is shaped somewhat like a toque. At the back is an enormous double bow, the straw tied just as ribbon would be tied. Back of the bow of straw are quantities of shaded tea roses and the whole hat is veiled in yellow tulle. It is indescribably soft in coloring and general effect.

Bright red hats are no longer fashionable, and there are very few purple ones seen; but all conceivable shades of green and blue are greatly in evidence. On the blue hats there are trimmings of different shades of blue, so that there will be the deepest navy-blue and the lightest turquoise, with all the intervening shades.

Bloomers, knickerbockers and divided skirts are not fashionable. The divided skirts are oftener used than either of the two before mentioned; but even enthusiastic bicyclists find it impossible to ride a wheel and wear a skirt that is becoming both on the wheel and off of it, and that a divided skirt rarely is. In the beginning of bicycling, tailors did not understand how to make the skirts; they were too wide or too narrow, and the fullness was in the wrong place; but now a degree of perfection has been reached, so that, like riding-habbits, they are as trim and neat as possible, with not one inch too much of material, and yet enough to be entirely becoming.

Serge, cheviot and covert cloth are all excellent materials, and there are many golf cloths with double face that make very smart skirts; these last are largely used by one of the leading makers in New York. Skirts made of double-faced material are finished so they can be worn either side out, thus virtually giving two skirts—a dark blue or black will have the other side of black and white of a medium sized check, etc. It is not well to go in for any startling effects in a bicycle suit; the quieter a woman dresses, the better she looks. The prize awarded at the recent doll show for the



Sulpho-Saline Sanitarium, Cor. 14th and M

All Kinds of Baths—Scientific Masseurs. A Deep Sea Pool, 50x142 feet.

Shaving—Hairdressing.

DRS. EVERETT, Managing Physicians.

best bicycle costume was given to a plaid skirt and plaid jacket, but the same effect in an all plain material would have been better. There is considerable dispute as to the best style of jacket to wear. Some people like the long coat of three-quarter length, while others prefer the Eton jacket. The great advantage of the Eton jacket is that it is small enough to take off and roll into a small parcel, which can be strapped on the handle bar, but it should not be on the double-breasted plan with any large revers. The smartest ones are more on the mess-jacket order, fastened at the throat only, then open, and the fronts left loose.

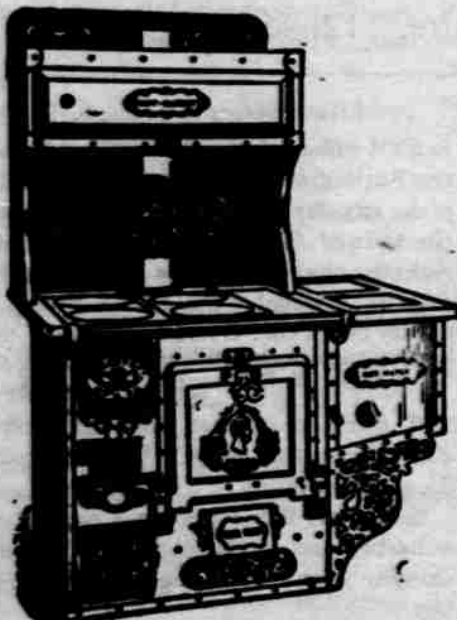
Bicycling boots, either tan or black, are worn until very hot weather sets in, when the low shoes and plaid stockings will again be fashionable. It looks particularly well to wear leggings of the same color as the costume, if the costume is one of the light tan cheviots or linens, but in hot weather leggings, like the boots, are very hot indeed. The plaid stockings do not look well if one has large feet and thick ankles, and of course tan shoes with stockings to match, or black shoes with black stockings, are always in good taste.—Harper's Bazar.

For sale, or will exchange for a first class Nebraska farm, a number of choice residence lots in the city of Hannibal, Mo. These lots are in the line of future improvement and are only about fifteen minutes walk from the United States post office and district court building; the trade will be made on a cash valuation. For particulars write George D. Clayton & Co., real estate dealers, Hannibal, Mo.

Weary Searcher—I hope, madam, you do not object to children.

Boarding-house Keeper—Oh, not in the least, I have nine myself.

Weary Searcher—Um—er—if I decide to take the rooms I will send you a postal card.—Tid Bits.



Patronize Home Industry. Made in Nebraska.

New Lincoln Steel

RANGE

Best on earth. Made on honor. Sold on merit. Guaranteed a good baker and economical of fuel. All styles and sizes. Some people claim they will SAVE THEIR COST IN FUEL inside of two years over any cast iron stove made.

4 Hole Range as Above.....40.00
6 Hole Range as Above.....45.00

With enamel reservoir. Delivered at any railroad station within 300 miles of Lincoln,

BUCKSTAFF BROS. Mfg. Co., Makers. Lincoln, Neb

THIS SHOE

is fine vici kid, vesting top, turned soles, new tan.

BROWN OR BLACK

\$4.00.

THE FOOT FORM STORE
1213 O Street.

Judge Dallas in the United States circuit court for the Eastern District of Pennsylvania has granted injunctions further sustaining

WELGHBACH RAWSON PATENT.

We take this means of cautioning the public against the purchase of any incandescent mantle other than that made and sold by the Welchbach companies.

CULTRA & UNDERWOOD, Sole Agents.

PLUMBING, GAS FITTING and SEWERAGE. 134 SOUTH TWELFTH STREET. Telephone 345.

SPECIAL PRICES
On **BEVERIDGE COOKERS**

No. 0.—Former price \$2.00, now \$1.25
No. 1.—Former price \$2.75, now \$1.75
No. 2.—Former price \$3.25, now \$2.00

Original Pennsylvania
LAWN MOWERS
VIKING BYCICLES
MAJESTIC RANGES
the only Malleable Iron and Steel Range in Lincoln.

"MONARCH" GASOLINE STOVES

HALL BROS. CO.
1808 O ST.

TO **CALIFORNIA**
And North Pacific Coast
Points take the **GREAT ROCK ISLAND ROUTE**

Elegant equipment. Pullman service. Chair cars free. Through service to California points and Portland, Oregon, in Tourist Sleeping Cars.

BEST LINE FOR ALASKA

Send at once for a new folder of the Klondike region. If you want to get a farm in Kansas, Oklahoma or Texas, send for our Emigration Folder. Address

JOHN SEBASTIAN, G. P. A.,
Chicago, Ill.

THE COURIER has reduced its subscription price to \$1 a year. See title page.

For club reports, society and theatrical news, you want THE COURIER