

Fashions of the Day.

My Dearest Adelaide: Easter hats are abroad in full bloom, not as yet on the street, but ready for the Avenue parade. A cruise among the fashionable milliners shows two things: hats are tipped over the face, and trimmings are massed into such quantities that, but for the fluffy light materials used, our fashionables would seem doomed this season to be burden bearers. The materials—tulle, chiffons, nets, mousseline de soie, gauze, gros grain, taffeta and gauze ribbons. Trimmings are of thin stuffs entire, or else the thin stuffs veil other trimmings; there is a craze for veiling trimmings in one way or another.

White mousseline de soie, appliqued with black Chantilly lace, is wound softly around the crown, lying partially on the brim in folds which show to the best advantage the exquisite design of the lace pattern. One hat trimmed with this was of white straw so fine it looked like linen. The edge of the brim was bound with black velvet; under the brim, on each side, a little at the back, were dark red roses, giving height; at one side were black and white ostrich tips with an osprey of black and white. The shapes are mostly "shepherdess" and "sailor." Bat shapes are important only as something on which to rest the colossal quantities of trimming.

Some few hats are raised at the left side "a la highwayman," but the Gainsborough style is not seen so much in these Easter hats as one might have expected. The shapes carrying the exquisite trimmings are very simple in themselves, which balance well the gorgeousness of accessories. When mousseline de soie is not appliqued or embroidered in itself it is veiled with jetted or spangled nets having handsome designs. Black and white combinations in these soft fluffy stuffs are a special feature of the spring millinery in hat trimmings, or in toques for theatre, matinee and evening wear.

But colors, my dear, are simply gorgeous!

NEXT TO THE COOK'S HEART

And the most important factor in a well regulated kitchen is the range. It must be one that the drafts are easy and accessible to handle, so that the oven can be tempered to any degree necessary for baking. One of the most particular elements of making palatable, healthy baked food consists in keeping the oven at the proper heat. It must also be economical of fuel, in size and form it must be symmetrical; material and workmanship the most perfect. It should have beautiful and artistic designs in Nickel Trimmings.

All these essential features we have in the New Lincoln Steel Range. This is our reason for calling it the

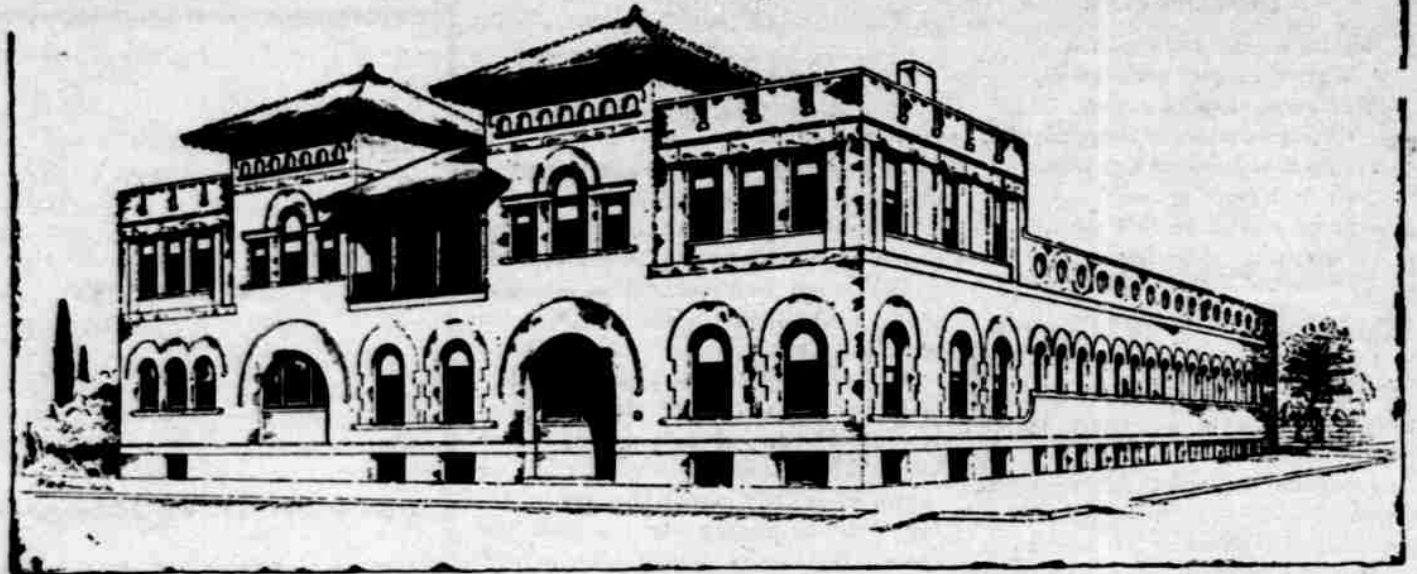


'BEST ON EARTH.'

It is acknowledged by all competitors to be the handsomest steel range made. In the future we will tell you about a model kitchen and a few receipts for dainty dishes.

We guarantee them in every particular. If your dealer does not keep them write to us.

BUCKSTAFF BROS. Mfg. Co., Makers. Lincoln, Neb.



Sulpho-Saline Sanitarium, Cor. 14th and M

All Kinds of Baths—Scientific Masseurs. A Deep Sea Pool, 50x14 1/2 feet.

Shaving—Hairdressing.

DRS. EVERETT, Managing Physicians.

of the season, and turquoise blue and yellow, and bright red ones, plain and trimmed, are seen everywhere. The most fashionable colors in millinery, and in these accessories, are violets and purples, black and white, gray and turquoise blue. If there is a preference it is for turquoise blue. It has been murmuring all winter and has now burst forth into fullest glory. It is becoming to almost everybody. Pale gray is still a favorite, but it is trying to many complexions.

"I hear that Dornick died suddenly out in Arizona."  
"That is true."  
"What was his complaint?"  
"He complained that the boys didn't give him a fair trial."

NEW TOURIST CARLINE.

Weekly Personally Conducted Excursions to Portland, Ore., via Burlington Route.

On February 17 and every Thursday thereafter at 6:10 p. m. Pullman tourist sleepers in charge of our own excursion conductor are scheduled to leave Lincoln for Portland, via Denver, Leadville, Salt Lake City, Ogden and Oregon Short Line, passing through the grandest scenery of the Rockies and stopping several hours at Salt Lake City to allow a visit at many points of interest there.

Berths, tickets and full information may be obtained at B. & M. depot or city ticket office, corner Tenth and O. GEO. W. BONNELL, C. P. & T. A.

CYCLE PHOTOGRAPHS  
ATHLETIC PHOTOGRAPHS  
PHOTOGRAPHS OF BABIES  
PHOTOGRAPHS OF GROUPS  
EXTERIOR VIEWS

*Clements*

THE PHOTOGRAPHER  
129 South Eleventh Street.

E. FLEMING,  
Practical Watchmaker, Jeweler and Engraver.  
Glasses Fitted. Examination free.  
1211 O STREET.

"She is the most fickle girl I ever saw."  
"Her love is inconstant, eh?"  
"I should say so. She has a different make of wheel each year."

AMERICAN EXCHANGE NATIONAL BANK  
LINCOLN, Neb.  
S. H. BURNHAM, A. J. SAWYER,  
President. Vice-President.  
D. G. WING, Cashier.  
CAPITAL \$250,000.  
DIRECTORS: A. J. Sawyer, S. H. Burnham, E. Finney, J. A. Lancaster, Lewis Gregory, N. Z. Snell, G. M. Lambertson, D. G. Wing, S. W. Burnham.

GET DOWN TO FACTS.  
The name plate, joints, enamel, nickel plating or tubing has nothing to do with reducing the strain, the wear, the leverage or friction of any bicycle.  
The name plate may be set in diamonds; the tubing of gold and the enamel in mother of pearl, still your bicycle may pull as hard as a handcar. The actual worth of a delicate piece of machinery is determined by its approach to perfect mechanical laws. No bicycle with bearings inside of the sprocket is a perfect piece of machinery.  
There is only one mechanically correct bicycle made in the world, and that is

THE Racycle  
NARROW TREAD

Whose chain pull is between the bearings and saves from 20 to 30 per cent. pressure. No other wheel has this feature. None can save this pressure and wear on the bearings except THE RACYCLE. The bicycle business will be the survival of the fittest, and advertising pretty pictures and displaying big words does not make a good wheel or save a rider any extra exertion.

MIAMI CYCLE & MFG CO.,  
MIDDLETOWN, OHIO.  
Sole agents for Lincoln  
A. L. GIRARD & CO.  
Dealers in Bicycle and Bicycle Supplies.  
135 So. 12th St., Lincoln, Nebr.

IT IS THE TRAIN TO TAKE  
The Burlington's "Vestibuled Flyer," which leaves Lincoln every evening at 6:10 p. m. and arrives in Denver the next morning at 7:15.  
It carries thro' sleepers, chair and dining cars, and offers a service that is unexcelled by any road running into Denver—remember this when purchasing your tickets and START RIGHT.  
B. & M. depot cor. 7th and P sts. City Ticket office cor. 10th and O sts.  
G. W. BONNELL, G. P. & T. A.  
Geraldine—I wish I were a man.  
Gerald—What would you do?  
Geraldine—I'd propose to me.