

Fashions of the Day.

My Dearest Adelaide:—In tilting your hat tilt the brim but not the crown. There is such a difference in this tilt!—you are a lady or you are not a lady. All hats have the sideways appearance, but the crown to be au fait must rest squarely and in respectability's straight line with the face. It is the brim that is allowed the freedom of style and rakishness. Brims can be bent into any shape that is becoming to the contour of face and head. It is surprising how a brim bent this way and that can bring out piquancy that otherwise would not be discovered in some faces.

The Gainsborough style of hat is becoming to nearly all faces, provided the style is moderated or accentuated to suit the wearer. It is the softening effect of the plumes that makes the picture. Plumes, like fur, are never a trail to features. Any woman rigged out in the present extravagances of ostrich plumes and rich furs passes for a beauty.

There is really nothing new just now in fashions, unless it be the certainty that has settled down.

Fur lapels on the blouse are invariably left open to show dressy vests and stocks of lace and satin and delicate tints. The Medici collar of fur stands up in a flare at the back, making a frame for the veiled features. The broad lapels opened to the waist, give a full effect to the bust, and accentuate the smallness of the waist.

Belts and buckles are special features of the blouse and the tiny waist. The blouse itself must be tight-fitted at the waist by a firm band, and then the belt adjusted without thought of making the waist any smaller. Metal belts, or belts with jeweled buckles, one in front and one in the back, can not be used to lessen inches in waist measure.

Dog-collars are as popular as belts. They are worn in the day time and in the evening, with a difference, of course. With a black chiffon over black satin evening costume there was a touch of

NEXT TO THE COOK'S HEART

And the most important factor in a well regulated kitchen is the range. It must be one that drafts easily and accessible to handle, so that the oven can be tempered to any degree necessary for baking. One of the most particular elements of making palatable, healthy baked food consists in keeping the oven at the proper heat. It must also be economical of fuel, in size and form it must be symmetrical; in a serial workmanship the most perfect. It should have beautiful and artistic designs in Nick's Trimmings.

All these essential features we have in the New Lincoln Steel Range. This is our reason for calling it the

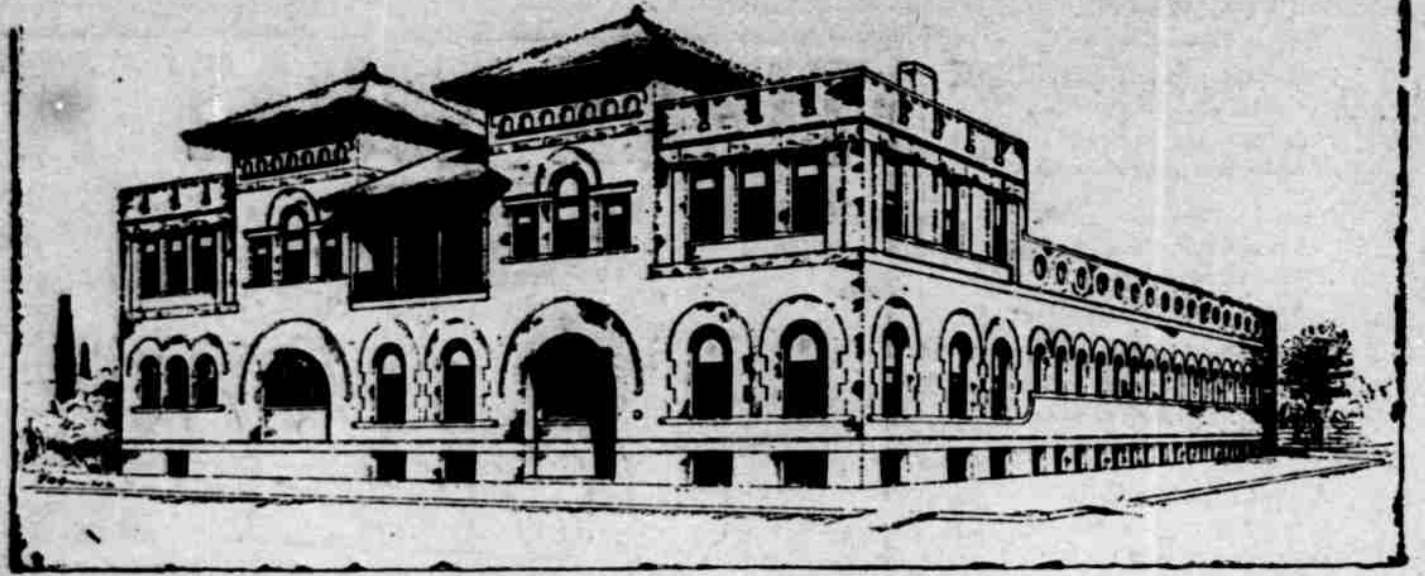


"BEST ON EARTH."

It is a kow-edgely all competitors. To be the handsomest and best made in the future, we will tell you about a model kitchen and a few receipts for delicious dishes.

We guarantee them in every particular. If your dealer does not keep them write to us.

BURDETT BROS Mfg. Co., Makers. Lincoln, Neb



Sulpho-Saline Sanitarium, Cor. 14th and M

All Kinds of Baths—Scientific Masseurs. A Deep Sea Pool, 50x142 feet.

Shaving—Hairdressing.

DRS. EVERETT, Managing Physicians.

coral pink satin in the bows and sash. Around the neck was row after row of coral beads—the ordinary broken coral bead—held in place by long diamond clasps. The effect was exquisite, the wearer being a brunette.

Another dog-collar was of gold beads like "our grandmothers used to wear"—small ones, these too, held together by the diamond clasps.

Collars of pearls and imitation pearls, one as much as the other, with the diamond clasps, are a stand-by. Even wax beads with rhinestone clasps are allowed and are better than none at all.

Velvet bands embroidered in seed pearls and studded with jewels, imitation and the real, and "home-made," are worn when all else fails.

There is reason in this dog-collar fancy for evening dress. Necks are ruined. The high collars, stiff and irritating that have been worn so long on dresses, have left their mark, and the plumpness and purity of color and the fine texture of the skin are beauties of the past. It will take massage, Turkish baths, skin-bleach, emollients and time to get throats back to nature.

Evening dress at the theatre, as well as the opera, is de rigueur now. Of course, men are expected to appear in the evening in evening dress. Women, however, since separate and dressy waists have been in vogue, have been sliding over the—I was going to say duty. It is not exactly a duty to don a dress decollete, or half so, when with a gentleman who is attired in evening dress, but it is a pleasant attention. Our theatres are such air-shafts that the custom in America is not adhered to as in England. There, any old dress is cut off at the neck rather than be seen after 6 in high neck. Lately, since the opera season commenced, all the theatres are brightened up with full evening dress—jeweled dog collars, jeweled combs and dressy wigs that can be laid aside or simply thrown back.

The new shades of satin—pink-violet, coral pink, pale and dark turquoise—as touches in black waists, or as waists that are toned down with black accessories, are most effective for evening wear, and becoming alike to light and dark complexions.

The pure white tie and white vest the men are wearing for evening are as dainty and as delicate as one could wish. If men would always remember to keep the black tie for the dinner coat or "Tuxedo!" A black tie is not full dress, and takes away its greatest charm.

The new frock coat for men are so well fitted at the waist, that it would be unpardonable if the dear creatures resorted to corsets to preserve the garments from wrinkles. The warm weather brings out the frock and silk hat without overcoats, and, I must say, the

broad shoulder effect, small waist and full skirt is decidedly Beau Brummell. TESSA.

Lillian.

It was Sunday afternoon. Lillian sat in the deep window seat reading. I lay on the divan near her and pretended to read too, but really I was looking at her. She made a beautiful picture, sitting there with the wind blowing her brown curls back from her white forehead. Her eyes were as blue as the violet she held in her hand. Suddenly she shut the book. "Well, I've finished 'Consuelo'!" It's the loveliest book! Now that's just what I think. I believe that when people die their soul lives right on and can come back to the earth and live with those it has loved. I shall do that when I die. I'll come back and talk to you. Would you be afraid? I wouldn't mind dying at all; I'd like so much to know."

It was only a month later—a short summer month. Once more it was a quiet Sunday afternoon. There on the stand lay "Consuelo." I picked it up and went to the window. Through the blinding tears that rushed to my eyes I could see a little grave covered with new sod; on it lay a bunch of violets tied with white ribbon.

Lillian knows now.

CARRIE MARIE MELICK.

HOMESEEKERS' EXCURSION VIA BURLINGTON ROUTE.

On February 1st and 15th the Burlington will sell round trip tickets to all points in Indian Territory, Oklahoma Territory and Texas, and to all points in Arizona, Arkansas, Louisiana, Missouri and New Mexico at one fare plus \$2.00. Full information regarding limits, stopovers, etc., at B & M depot or city ticket office, corner Tenth and O Sts. GEO. W. BONNELL, C. P. & T. A. 2-15.

THE COURIER has reduced its subscription price to \$1 a year. See title page.

CYCLE PHOTOGRAPHS ATHLETIC PHOTOGRAPHS PHOTOGRAPHS OF BABIES PHOTOGRAPHS OF GROUPS EXTERIOR VIEWS

Clements

THE PHOTOGRAPHER 129 South Eleventh Street.

IT IS THE TRAIN TO TAKE

The Burlington's "Vestibled Flyer," which leaves Lincoln every evening at 6:10 p. m. and arrives in Denver the next morning at 7:15.

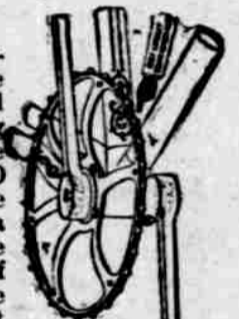
It carries thro' sleepers, chair and dining cars, and offers a service that is unexcelled by any road running into Denver—remember this when purchasing your tickets and START RIGHT.

B. & M. depot cor. 7th and P sts. City Ticket office cor. 10th and O sts.

G. W. BONNELL, G. P. & T. A.

Our Crank Hanger Does It

The Racycle Narrow Tread is the easiest running and longest wearing wheel made, because there is from 20 to 30 per cent. less pressure on the bearings of a wheel having the balls in the hubs of the cranks and the chain and sprocket wheel rolling between the bearings, thus saving leverage. We back this assertion with



\$1,000 IN CASH.

If you do not believe it examine the Racycle, either theoretically or practically, figure on it, and if you can disprove our assertion we will GIVE YOU \$1,000 IN CASH.

Here is your chance, send for catalogue.

MIAMI CYCLE & MFG CO.,

MIDDLETOWN, OHIO. A. L. GIRARD & CO., AGENTS, LINCOLN.

WANTED AGENTS

BOTH MEN AND WOMEN. If you are willing to work, we can give you employment with GOOD PAY, and you can work all or part time, and at home or traveling. The work is light and easy. Write at once for terms, etc., to

THE HAWKS NURSERY COMPANY Milwaukee, Wis.

NEWSPAPER ADVERTISING in the United States. A book of two hundred pages, containing a catalogue of about six thousand newspapers, being all that are credited by the American Newspaper Directory (December edition for 1897) with having regular issues of 1,000 copies or more. Also separate state maps of each and every state of the American Union, naming those towns only in which there are issued newspapers having more than 1,000 circulation. This book (issued December 15, 1897.) will be sent, postage paid, to any address on receipt of one dollar. Address The Geo. P. Rowell Advertising Co., 10 Spruce street, New York.