

# THE LANSING THEATRE

**ED A. CHURCH, Manager.**

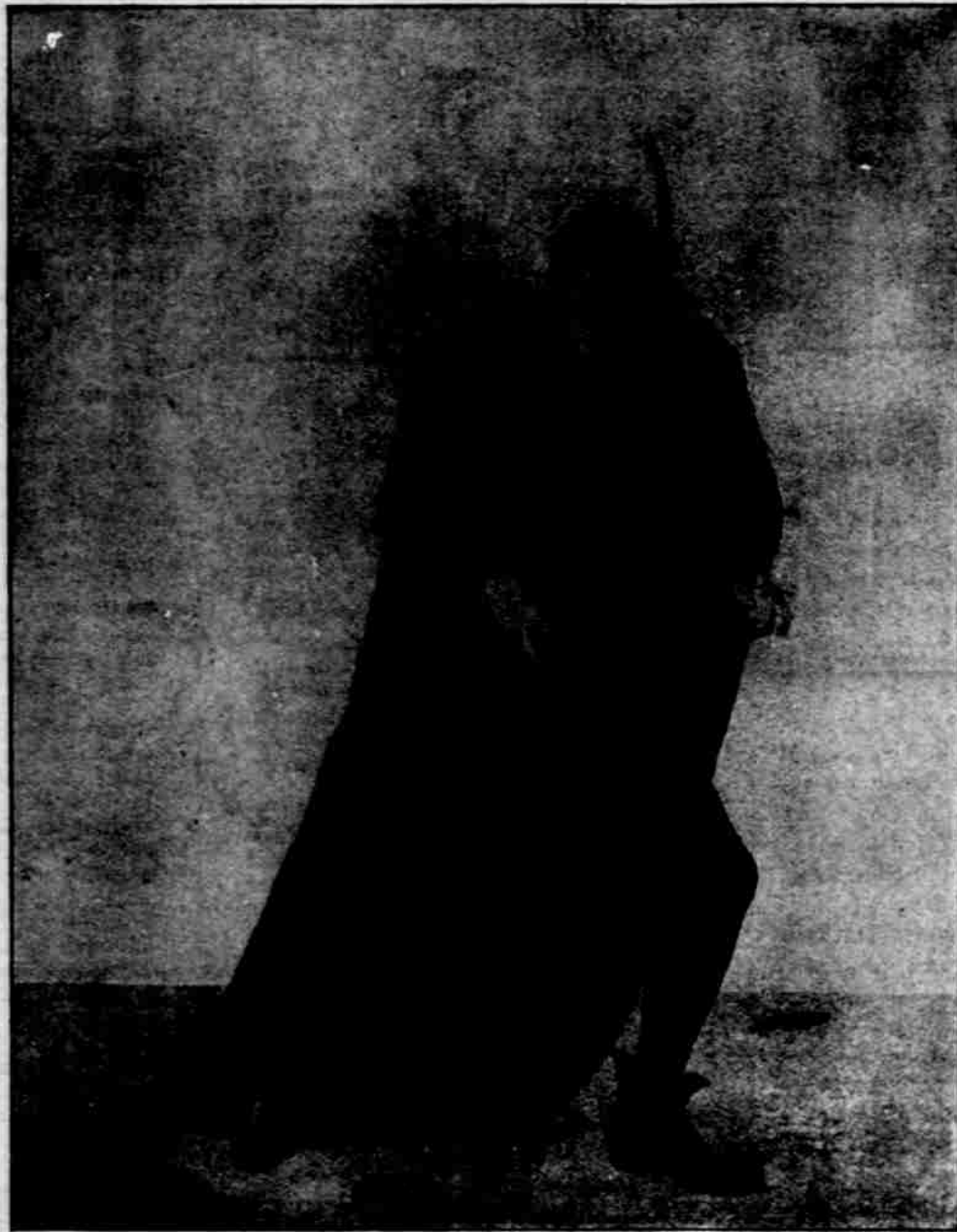
---

MONDAY EVENING, APRIL 1.

MR. JOHN GRIFFITH ~~—————~~

-IN-

**“FAUST.”**



This is a home attraction, having started in this city and on its return from a successful eastern tour should receive liberal support. Seats now on sale.