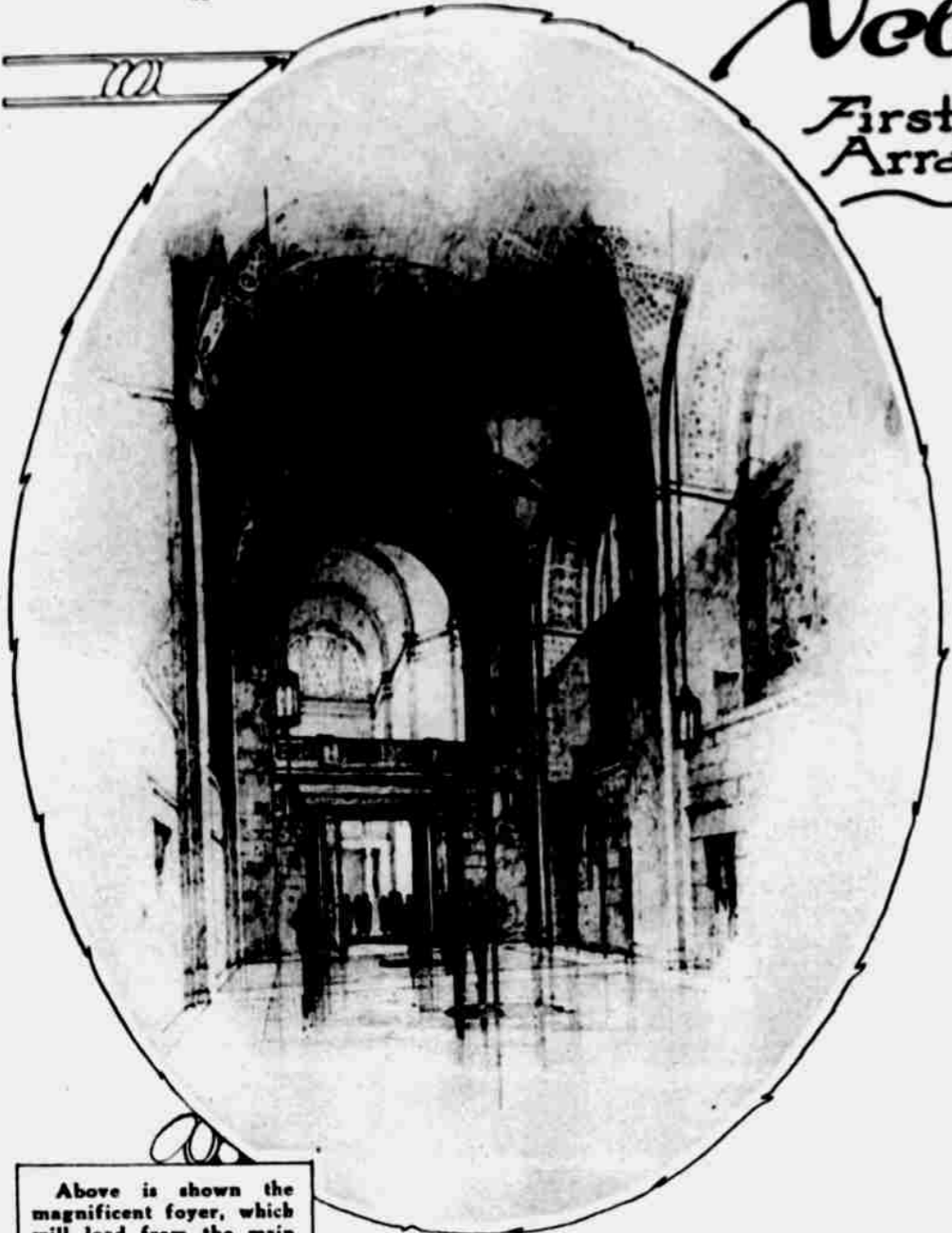


## Nebraska's New Capitol

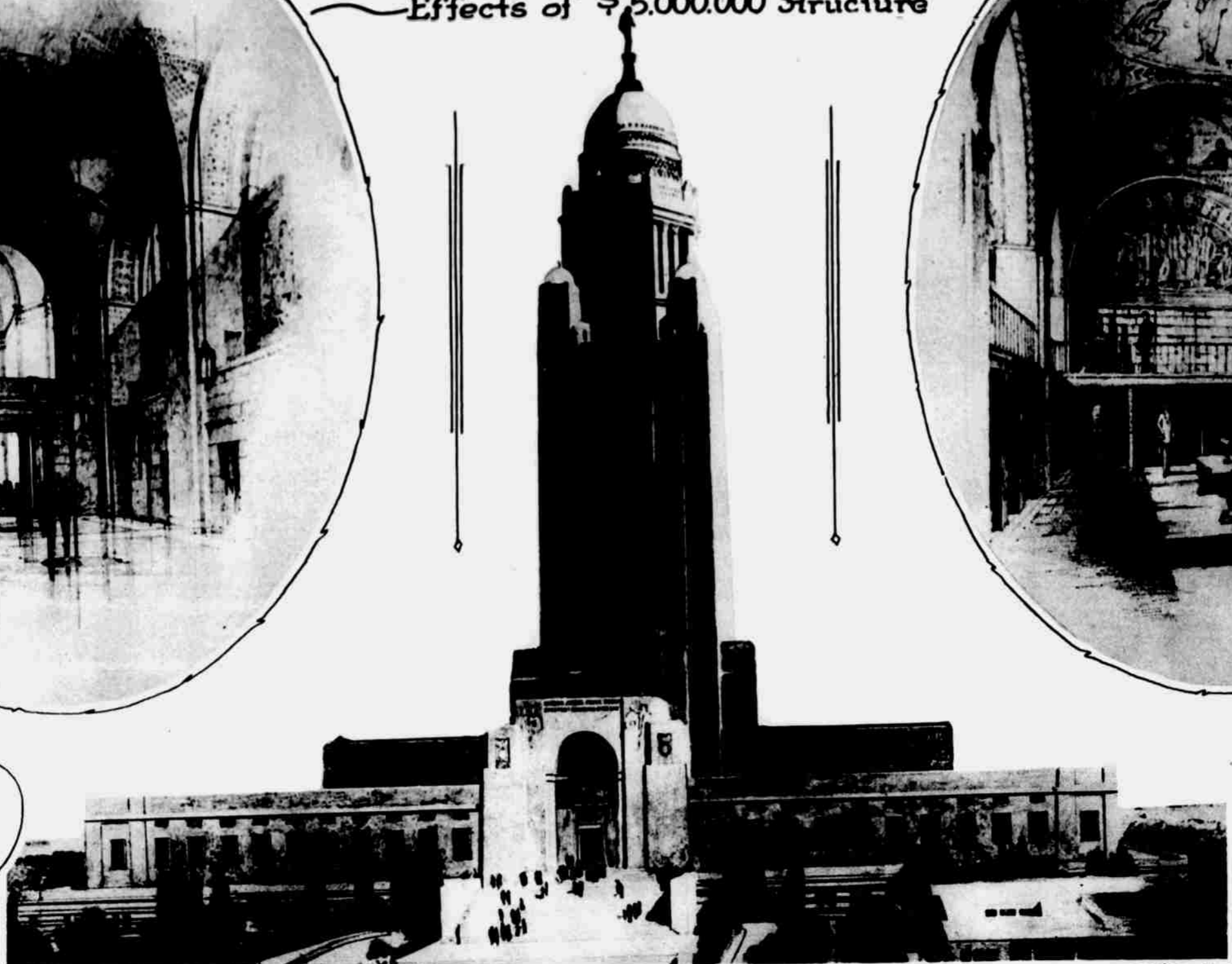
First Published Photographs showing Arrangement and Architectural Effects of \$5,000,000 Structure



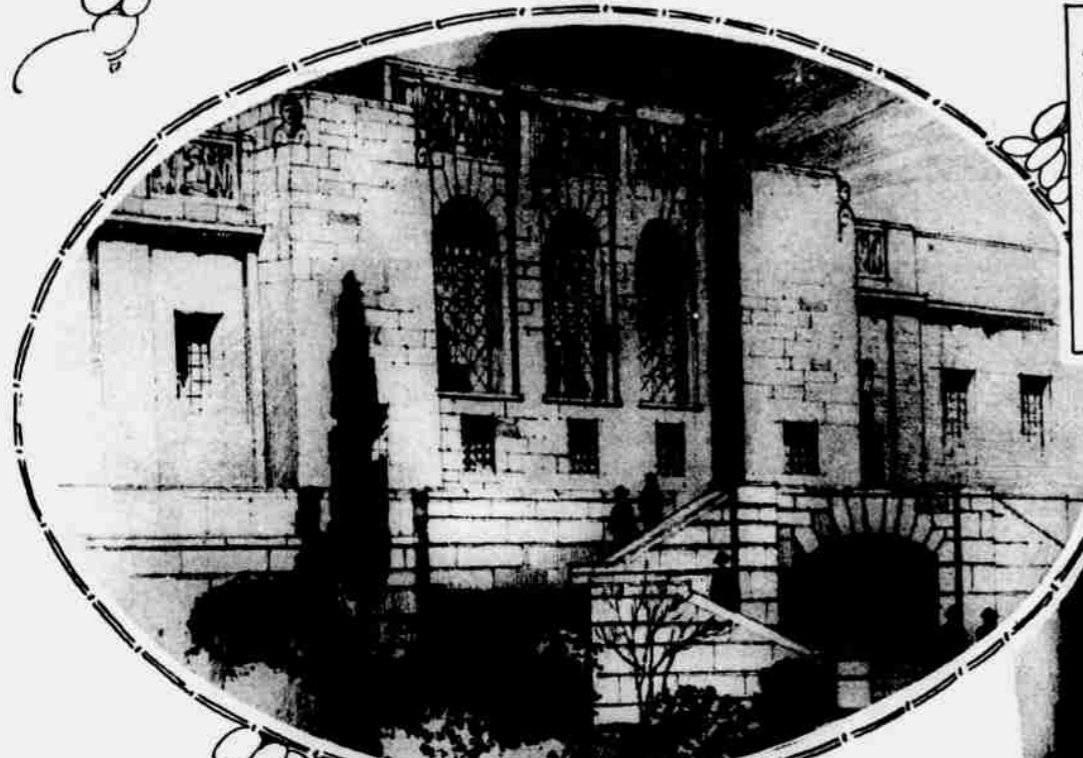
Above is shown the magnificent foyer, which will lead from the main vestibule directly to the central rotunda beneath the tower. The high ceiling is to be a groined vault of colored and gilt tile. On the walls, beneath semi-circular windows, are to be provided six panels for mural paintings relating to the history of Nebraska.



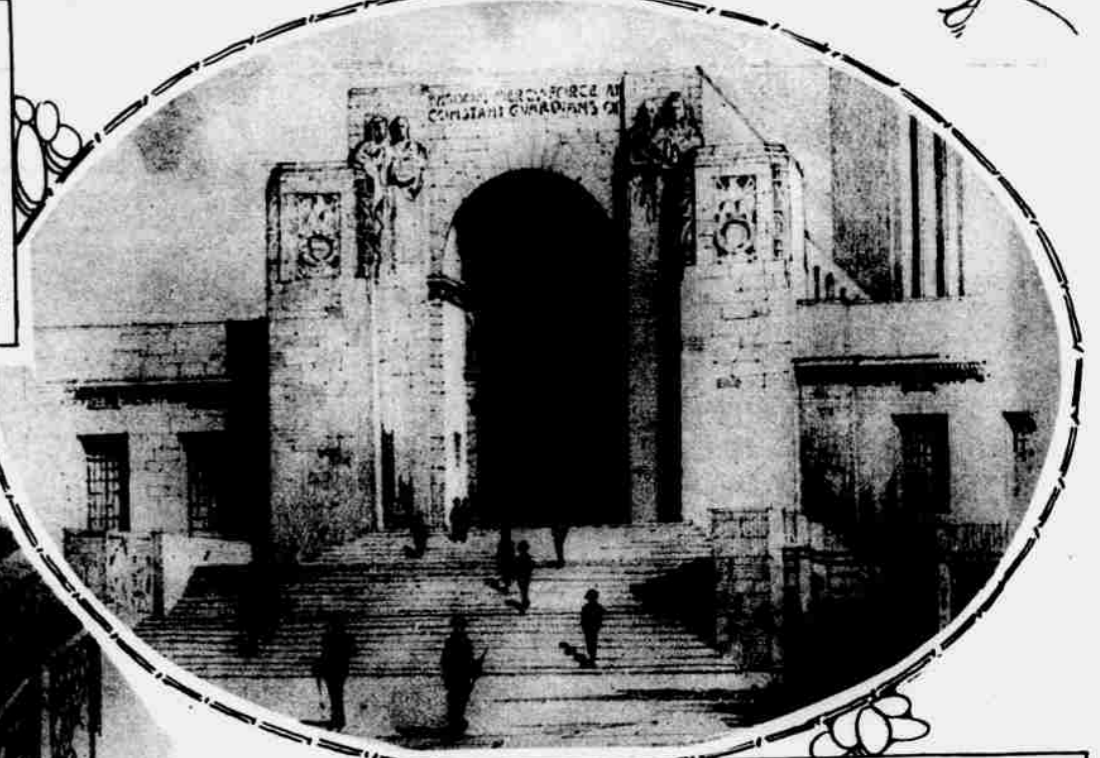
The big main room of the library will be divided by arches into four bays, each bay to be vaulted with a dome. The doorway shown at the rear in the picture leads to the reading room. The library and reading room will provide space for 60,000 volumes, with additional storage and expansion space in the shaft of the capitol tower.



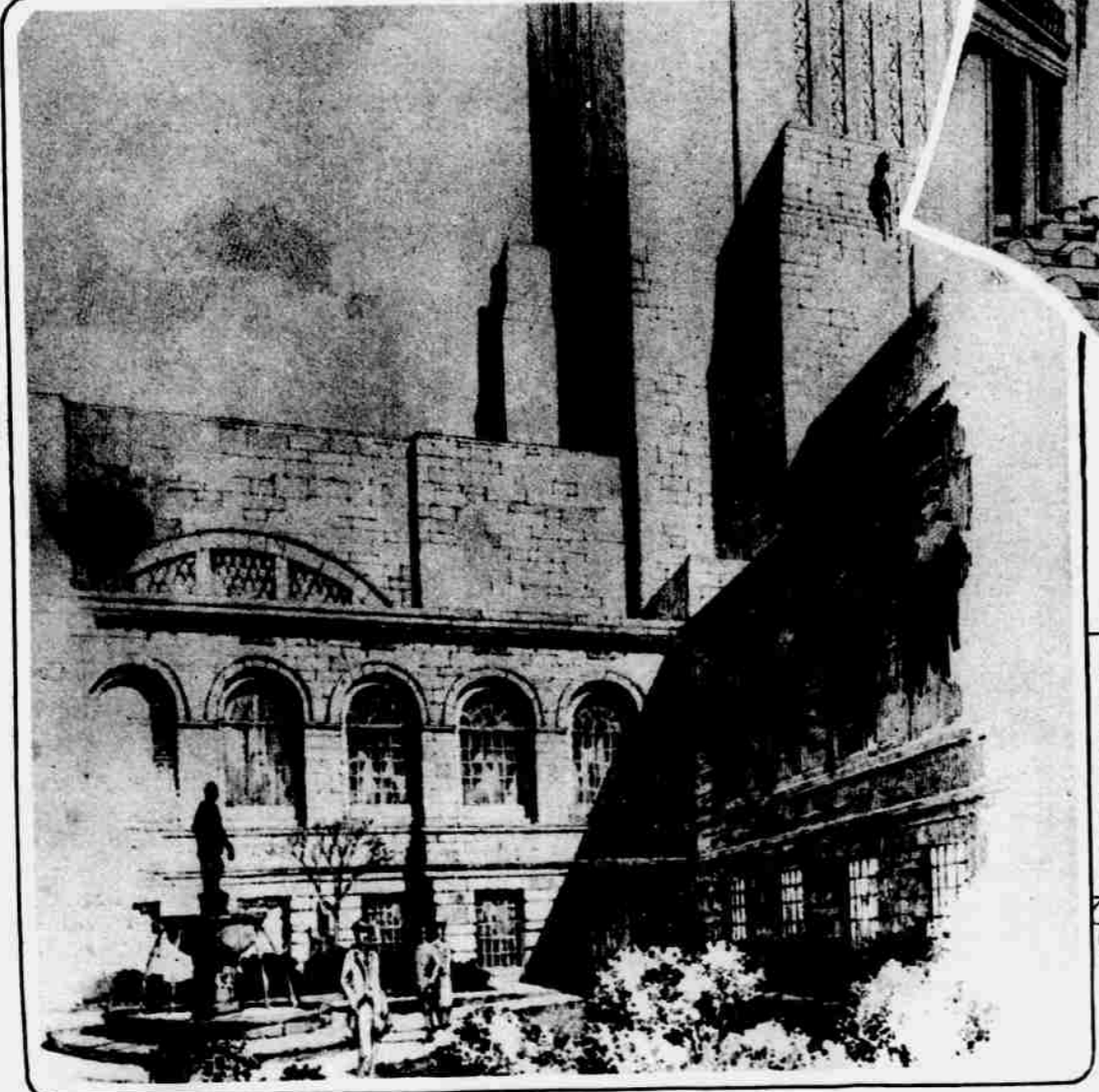
The new capitol, designed by Bertram G. Goodhue of New York City is to be in the form of an exact square, with an imposing central tower 400 feet high. Each face of the square will be 437 feet long, including the terraces. As shown in the photograph, the greater part of the exterior is low, two stories and attic, broken at the center of each side by a somewhat higher mass. Work on the structure is now under way, under supervision of the architect and members of the capitol commission consisting of Governor Samuel R. McKelvie, State Engineer George E. Johnson, W. E. Hardy, Walter W. Head and W. H. Thompson. The building is expected to be ready for use by January 1, 1925. The photographs here presented are from drawings by Architect Goodhue.



This drawing shows the architectural arrangement for the east and west entrances. The entrances lead into the first floor. The stairways shown on each side give access to terraces.



Leading to the main entrance of the capitol will be a flight of steps 75 feet wide, terminated by plynths, upon which bas-reliefs will be sculptured.



This is the hall of the House of Representatives, with galleries on three sides, supported by marble columns. The speaker's desk is shown in the niche on the west wall, beneath a mural painting. The senate chamber will have the same dimensions as shown here, but with a slightly different architectural treatment.

By means of the four large rectangular courts, every office and room in the capitol will receive abundant light without the aid of skylights. The above photograph shows one of the courts, each of which has dimensions of 87 by 100 feet.

The picture above shows how the south front of the building will look from the broad terrace running alongside. The terrace is 20 feet wide and extends completely around the building. Access to the second, or main floor, will be from the terrace.

