

Varied Architectural Types Exemplified in Omaha Churches

THE SUNDAY BEE
MAY 1
TAY
of all
site
scap
stap
imp
wher
lamp
tion
Alr
wher
past
walk
As the
ing hill
of the
walls
frame
stories
the hi
cav
drip
The
biol
stretch
300 fee
acc
com
have
acco
TI
will
but
it, b
taxe
who
over
with
TI
opin
of A
bed
Ben
sold
who
bond
this
scho
Am
in 1
gen
grot
sac
clai
less
tion
The B
the North
pect
ber
will
of
nat
high
of
fere
W
sure
have
held
you
the
C
D
rect
pote
"ma
tion
a b
small
port
"Li
gent
repe
case
hom
"I
man
the
stro
been
conf
the
rest
to
s
the
S
28
Let
A
cial
All
ka
Bee
All
inte
hear
mer
one
dist
part
fire
the
Pr
B
trio
to
high
the
E
a s
ain
equ
penes
P
Via
the
Paris and evening they are
ing Lord and Lady Grand.



The First Central Congregational church, Thirty-sixth and Harney streets, is a fine example of Tudor Gothic.

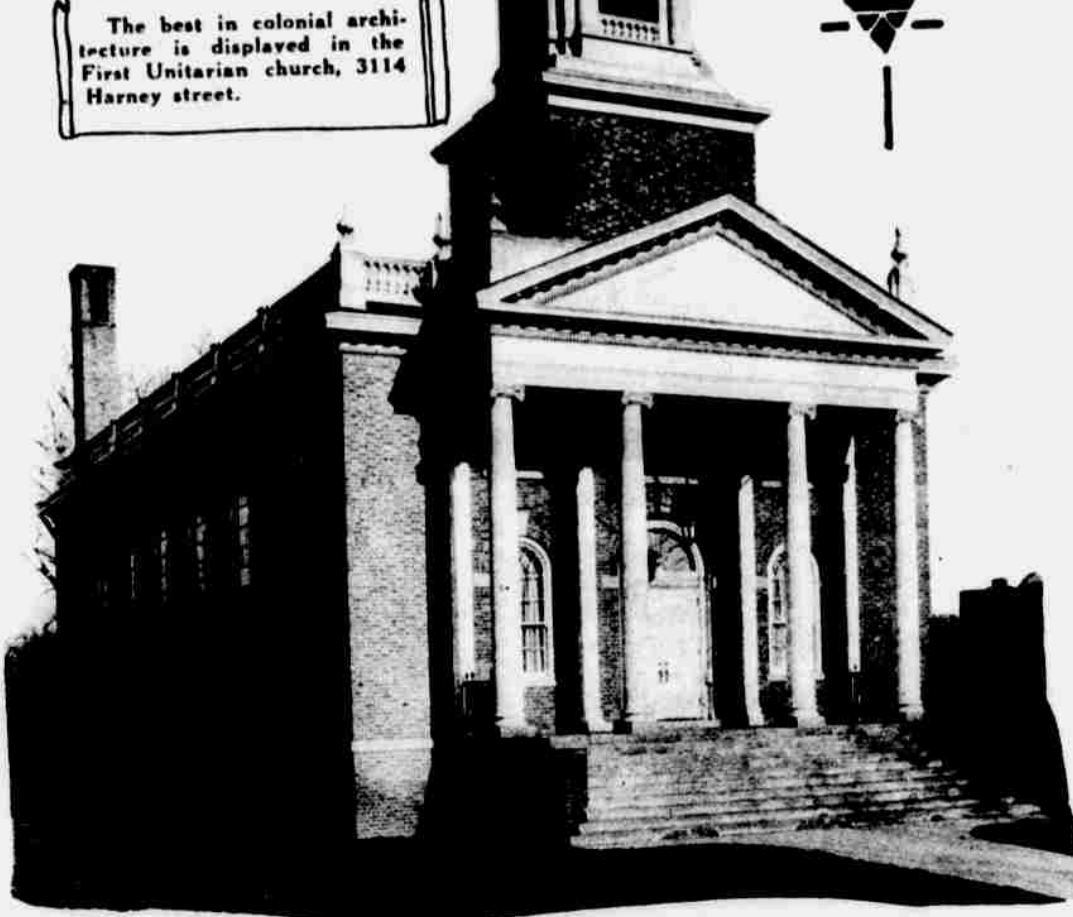


Temple Israel, Park avenue and Jackson street, is of Renaissance type.

Photos by
Louis R. Bostwick



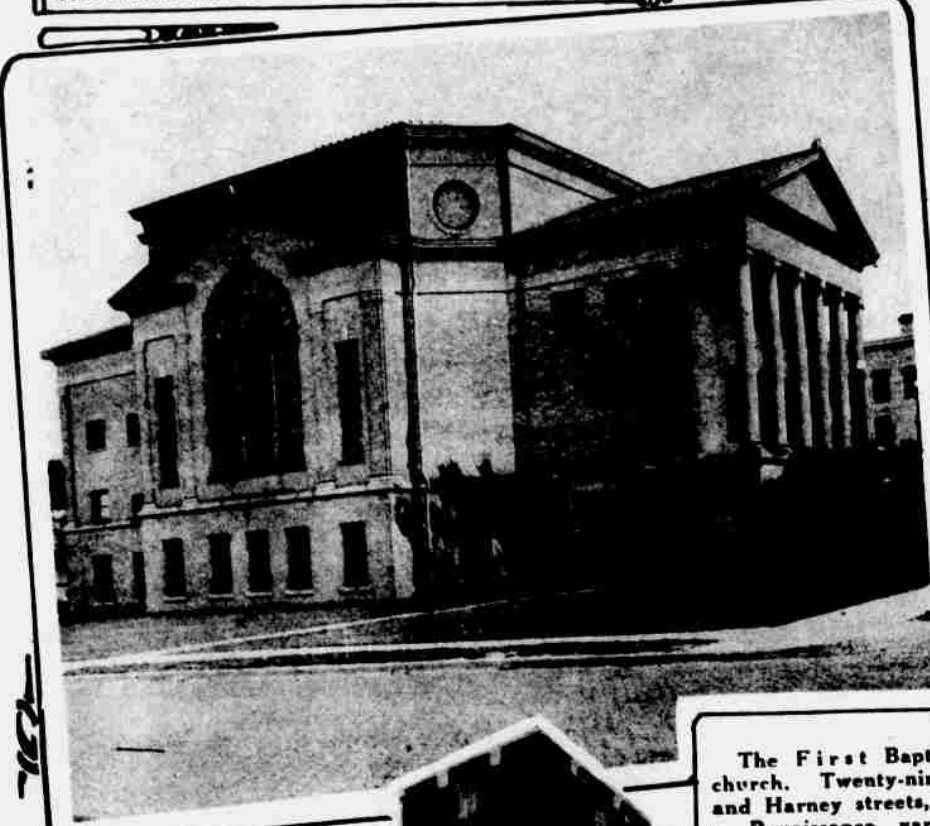
Renaissance is the type of construction of the First Church of Christ Scientist, Twenty-fourth street and St. Marys avenue.



The best in colonial architecture is displayed in the First Unitarian church, 3114 Harney street.



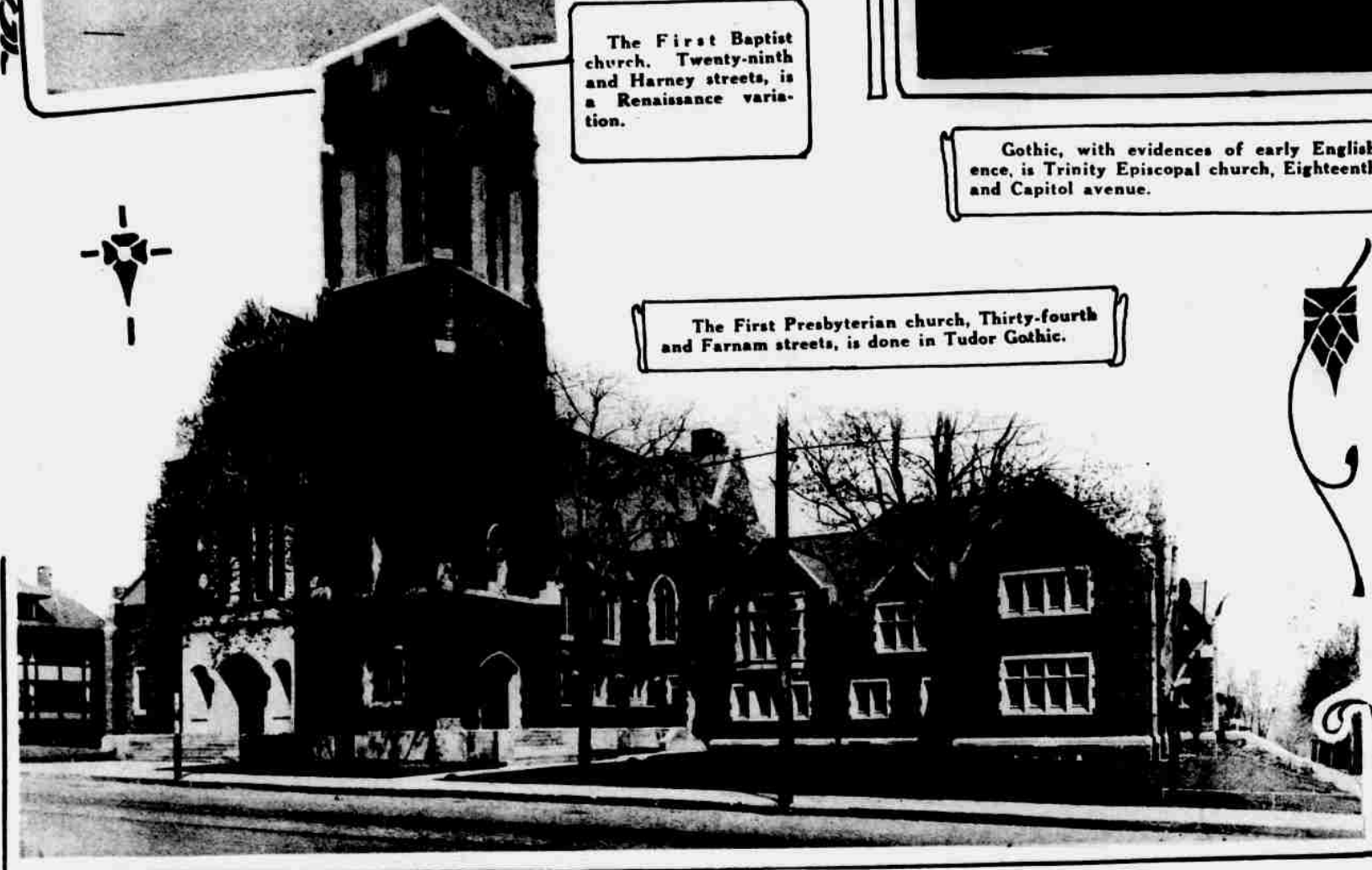
Kountze Memorial church, Twenty-fifth and Farnam streets, is of Gothic construction.



The First Baptist church, Twenty-ninth and Harney streets, is a Renaissance variation.



Gothic, with evidences of early English influence, is Trinity Episcopal church, Eighteenth street and Capitol avenue.



The First Presbyterian church, Thirty-fourth and Farnam streets, is done in Tudor Gothic.



This Spanish Mission type is St. Philomena church, Tenth and Williams streets.