

No Worse Pest in Auto World Than He-Gossip

May the Soul of Scandal Monger Rest in Peace, Prayer of Bob Odell.

By BOB ODELL, Manager, Hannan-Odell, Inc. Do you know that John Doe has lost the Blue Bell and that Bill Smith will soon lose the Flatiron and that Charlie Jones lost the Flaming Sword, etc.?

There is no worse pest on earth than the "he-gossip" and there are far too many of them. This type of fellow is the man who is always trying to sell his product on the demerits or alleged demerits of the other fellow's stuff and he never sells anything for very long.

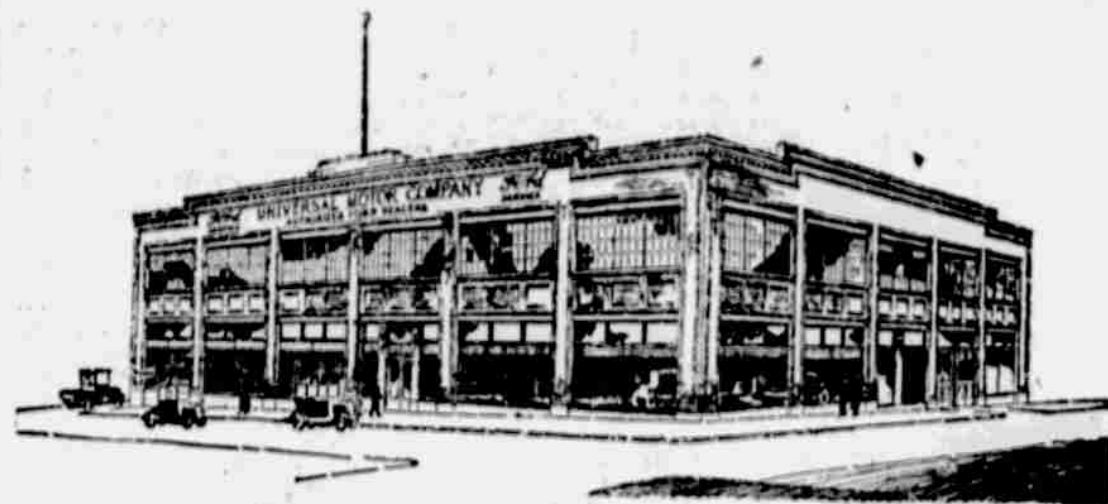
Rubber Tubing Should Be Used for Faulty Insulation

Whenever there is danger of rubbing installation of wires, which causes short circuits, take a piece of rubber tubing and cover the active wire. To do this the tubing should be spliced lengthwise and then firmly taped.

Neglect in Home Garage Worst Enemy of Auto Tire

An inspection of crippled tires in the collection of any repair man will reveal the fact that a larger percent-

New Building of Omaha Auto Firm

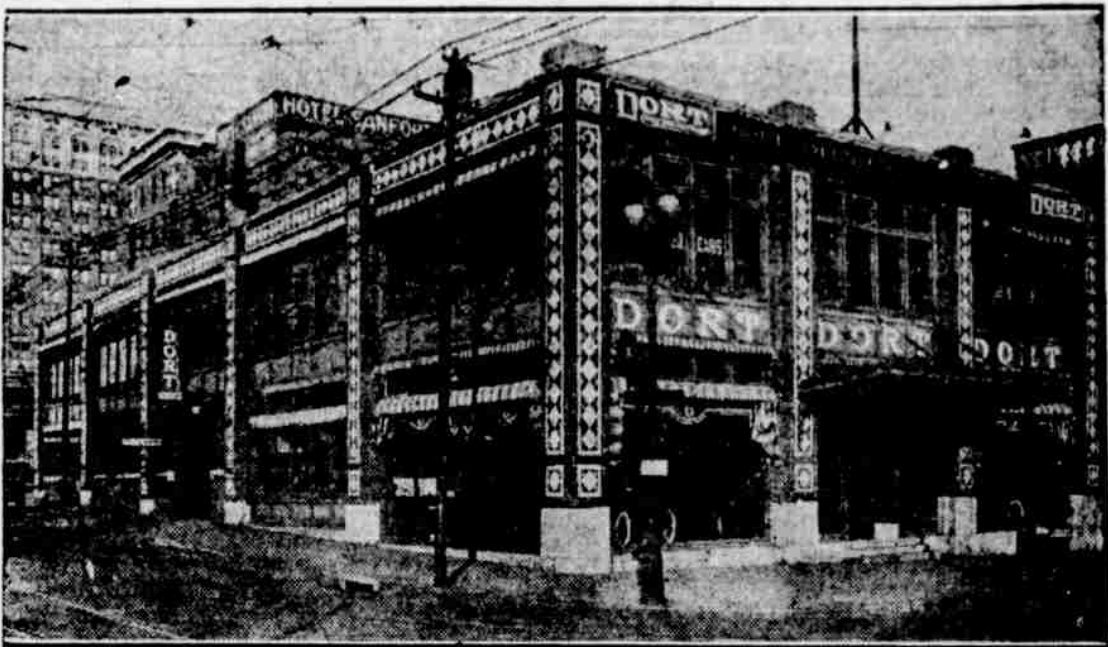


New home of Universal Motor company, being erected at Twenty-first and Leavenworth streets.

This building, when completed, will be one of the most modern automobile sales and service buildings to be found anywhere. It will occupy the entire half block at the southeast corner of Twenty-first and Leavenworth streets.

ities for taking care of our rapidly increasing number of Ford owners. Now, since we have also taken on the Lincoln, we have considered ourselves very fortunate that we have planned for the future. Our new location is several blocks nearer the center of the city and our new building will take care of the merchandising and service on more than 1,000 Fords a year, in addition to the Lincoln business.

Home of the Dort Sales Company



Yank Air Emblem, "Hat in Ring," to Be Perpetuated

Mementos of 94th Squadron to Be Issued at Auto Show by Rickenbacker Motor Co.

"Hat in the ring"—the first emblem of Yankee airmen to go over German lines—is to be perpetuated in a novel manner. The Rickenbacker company has decided to issue these emblems at the national auto shows as a memento of the Rickenbacker debut as a motor car.

A few weeks back the automobile world hailed the advent of the Rickenbacker Motor company—producing a car in honor of the noted ace. Captain Eddie Rickenbacker, America's ace of aces and one of the few great surviving airmen of the world war, was commander of the 94th squadron when hostilities ceased.

Garage Exclusively Used for Women Closes Doors

The garage, exclusively used for women in Brookline, Mass., has closed because of its few patrons. The interior of the building was fitted up with an expensively furnished waiting room, lockers and other conveniences, especially for women drivers and car owners.

GRAHAM BROTHERS MOTOR TRUCK WITH DODGE BROTHERS POWER PLANT

Your drivers will tell you that this is the truck you should standardize on. It has more power and uses less gas than the average.

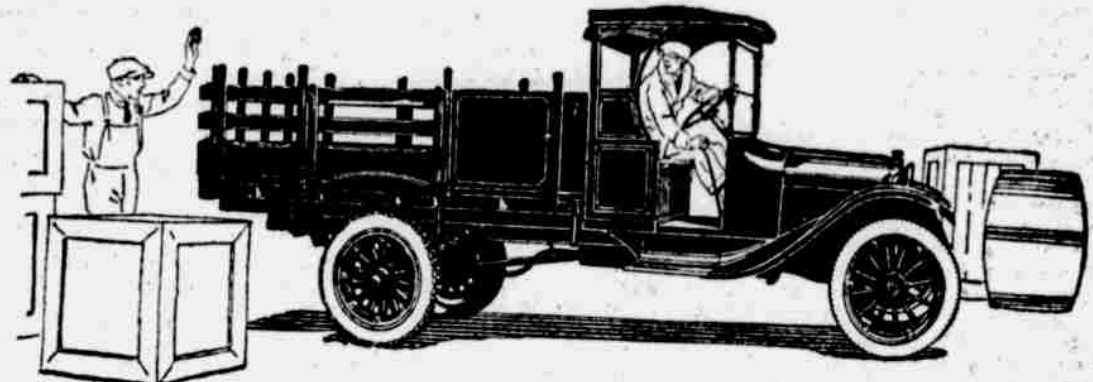
These are facts that we can prove conclusively.

A large variety of body types for 1 ton and 1 1/2 ton loads

O'BRIEN-DAVIS-COAD AUTO CO.

OMAHA, NEB. HARNEY AT 28TH ST. HARNEY 0123

COUNCIL BLUFFS, IA. 33-35 FOURTH ST. COUNCIL BLUFFS, 691



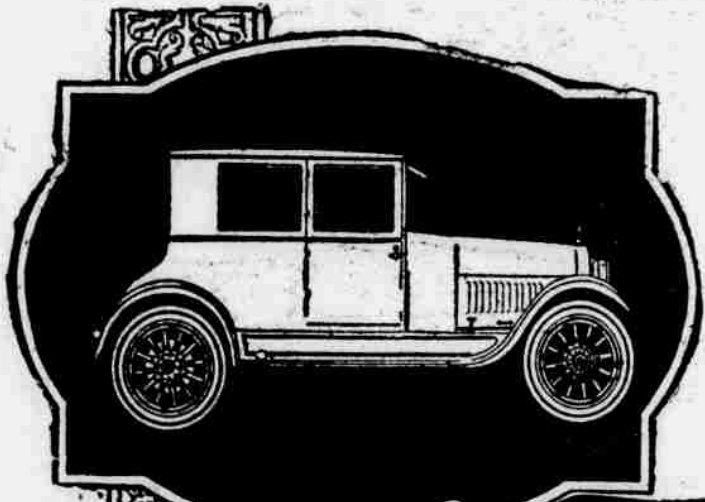
age of the trouble comes from neglect in the garage at home. If stones, ruts and road roughness were the only things that wore out tires, repair bills would be cut in half. Water, oil, grease and light-rub-

ber's worst enemies—work in a garage more actively than on the road. In washing the car the rims are liable to become rusty and eat away the tire. A coat of graphite or common stove polish will prevent

this and keep the tire from creeping. Oil or grease should never be allowed to stand on a garage floor. If a tire has been smeared with grease, it should be washed thoroughly with cold water and a little soap.

Something New by HUDSON

The Coach Five Passenger



\$1795

On the Famous Super-Six Chassis

This beautiful closed car is the most attractive value ever offered by Hudson.

We are now showing it for the first time. Come see it. It concerns you personally—and your plans for buying a car, whether open or closed model. An examination of the Hudson Coach will pay you well.

The Coach will cost you less even than the open model of any car to which you compare Hudson in quality, performance and reliability.

And see how fully it meets your closed car requirements at a saving of perhaps \$800 to \$1500. Think of a closed car on the famous Super-Six chassis, for \$1795.

That is less than 6 percent above the cost of the Hudson open models. It is the lowest differential between open and closed cars ever attained. It is a sensational achievement in car manufacture.

You need no other assurance with respect to the beauty, quality and smartness of the Coach than the fact that Hudson has always led in building fine closed cars. It has created styles that are patterns of the industry. The Coach is in keeping with Hudson's best traditions.

It is certain to be the most popular type Hudson ever built. Be sure to see it. It is just out. Early deliveries will be possible for those who place their orders at once.

GUY L. SMITH

"SERVICE FIRST"

2563-5-7 Farnam St. OMAHA, U.S.A. Phone DO uglas 1970

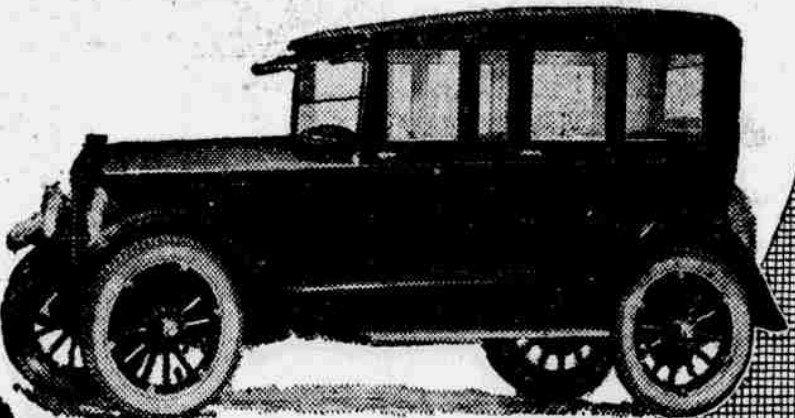
See the Hudson and Essex at the Auto Show Space 11

The Most Astounding Value Hudson Ever Offered

DORT

A Certified Car

Coupe \$1065
Sedan \$1115



Finally

The Prices of Open and Closed Cars Brought Near Together

Most folks have always preferred a closed car but objected to paying five or six hundred dollars more for it.

Dort has therefore rendered an immensely popular service in making it possible to enjoy closed car comfort at but little more than open car price.

People everywhere are talking about these solidly built, practical, complete closed models, and wondering how Dort can do it for the money.

Throughout the entire Dort line for 1922, a family of Seven splendid cars, you will find many mechanical refinements and new units of equipment such as perfected multiple disc clutch, greater radiation, spiral bevel gears, Alemite lubrication, motor driven horn, fine leather seat cushions and backs, and numerous other items.

At the Show—See What Dort Has Done For You

DORT SALES COMPANY

20th and Harney Street Omaha Phone DO uglas 6082

Astonishing Prices

- Model 19 Touring \$865
- Model 14 Roadster \$865
- Model 19-T Sedan \$1115
- Model 14-T Coupe \$1065
- Model 19-S Sedan \$1445
- Model 14-C Coupe \$1315
- Light Delivery Car \$825

All prices f. o. b. factory