

THE OMAHA SUNDAY BEE—ROTOGRAVURE SECTION
SPRING STYLES-1922



Dinner dress of copper colored Chantilly lace over wood brown canton crepe, modeled by Miss Sue Yates for Lemond's.



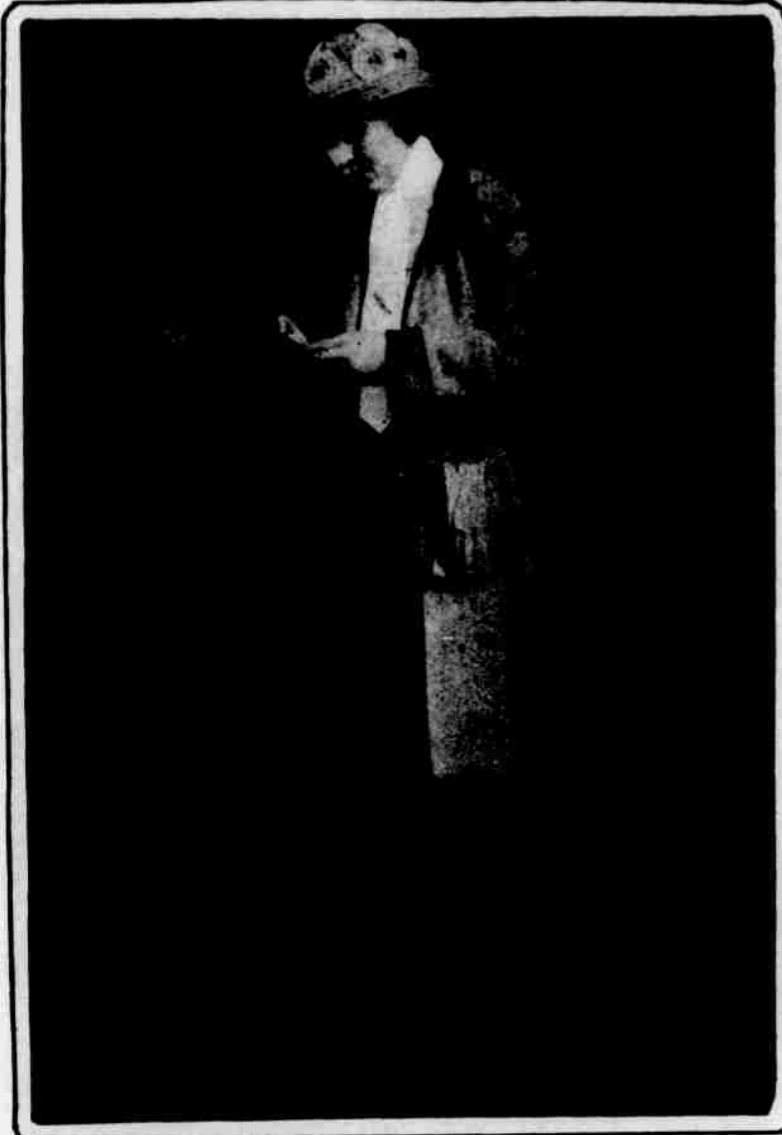
This dress, modeled by Mrs. J. A. Swanson for the Nebraska Clothing company, is a copy of an importation by "Driscoll." The foundation is jade green georgette, under puppy-skin taffeta. The sleeves, of taffeta and georgette crepe, are trimmed with black jet and embroidery. The dress presents the long waistline effect, with harem finished bottom.



Orkin Brothers are showing this little canton crepe dress, trimmed with steel beads. Posed by Miss Felson.



"Jennie" import of natural casha cloth combined with brown canton crepe. Modeled by Miss Hoyt for the Brandeis Stores.



Three-piece sport suit of imported tweed (knicker skirt) for golfing, motoring, etc. Modeled by Miss Mabel Miller for Kilpatrick & Co.



Scotch tweed skirt-knicker from Herzberg's, modeled by Miss Hewitt. At right, showing the neat knicker arrangement.



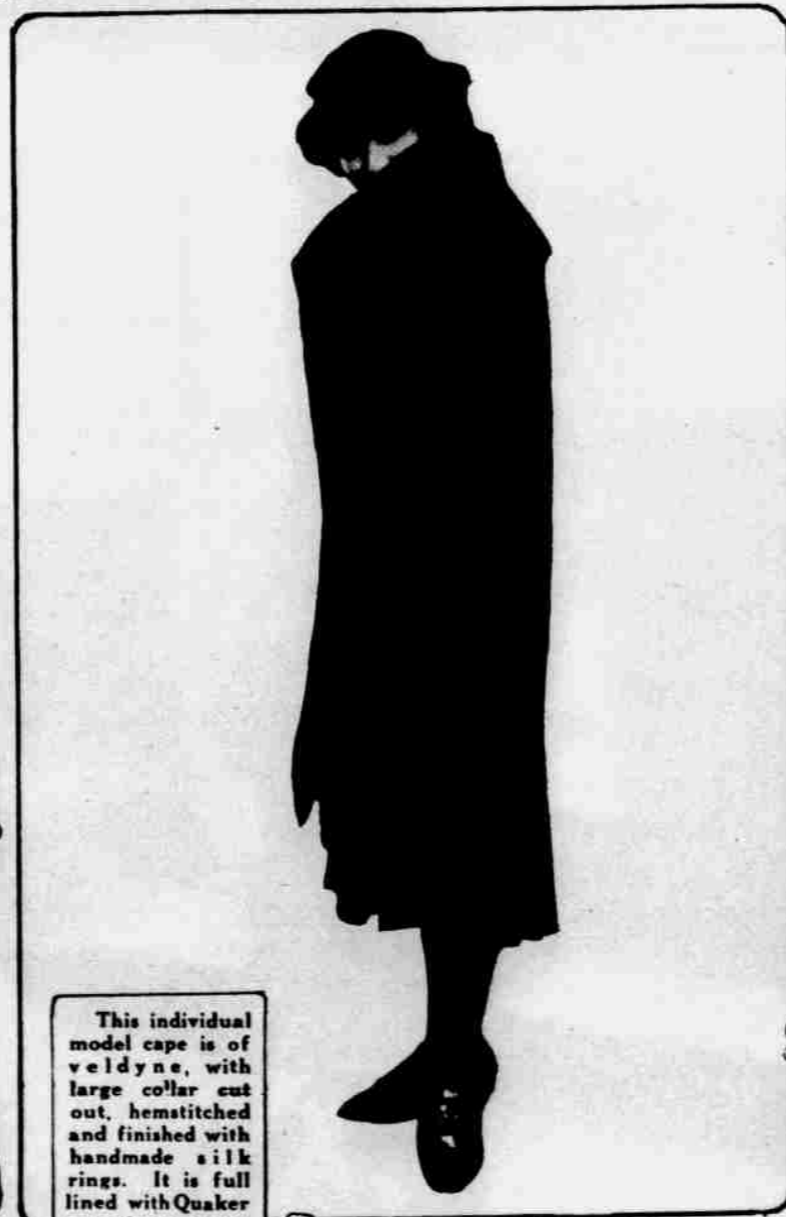
PHOTOS by
 Heyn



A Betty Wales model of black taffeta, shown by the Eldredge-Reynolds company.



Navy Poincianna cloth coat wrap, with slashed sleeve effect, gray duvetyne facing and lining of gray crepe de chine. Posed by Miss Meadville, Thompson-Belden & Co.



This individual model cape is of velveteen, with large collar cut out, hemstitched and finished with handmade silk rings. It is full lined with Quaker gray canton crepe. Posed by Miss Betty Ross for Haas Brothers.



A new French model taffeta afternoon dress, cream lace over black chiffon. Posed by Miss Clayton for Burgess-Nash company.