

New York Banks Show Tendency to Consolidate

Purchase of Lincoln Trust Is Demonstration, in Part, of Foresight of James Stillman's Prediction.

The Lincoln Trust company has passed into the ownership of the Mechanics and Metals National bank. It is one of a number of bank changes...

Establishment of the Lincoln Trust company has been a demonstration of the foresight of James Stillman's prediction...

Twenty-five years ago, with the exception of the Lincoln Trust in New York City, there were only two banks in the United States...

Good Bonds - May still be had at prices to yield 5 1/2 to 6%.

Thrivning Municipalities - May still be had at prices to yield 5 1/2 to 6%.

C. E. JOHNSON Municipal Bonds 211 Keeline Bldg. Jackson 1720

Tax Secured Investments Municipal Bonds and Warrants on Nearby Communities

Choice First Mortgage Real Estate Bonds

Harry A. Koch & Co

AT 1000 3360 Investment Securities First National Bank Building

GRAIN

We solicit your consignments of all kinds of grain to the Omaha, Chicago, Milwaukee, Kansas City and Sioux City markets.

Dividends Quarterly 6% Absolute Security

Make Your Money Earn More Money

Shrewd investors, particularly those with average means, realize the necessity of increasing the income from their savings to meet taxes and living costs...

Occidental Building & Loan Association

Assets \$9,378,000 33 Years in Omaha

The Updike Grain Company "The Reliable Consignment House"

THE ARRIVAL OF AUNT MARTHA



Market, Financial and Industrial News of the Day

Live Stock

Omaha, Feb. 23. Receipts - Cattle 1,000; Hogs 1,500; Sheep 2,000. Market steady.

New York Bonds

Liberty Bonds - 104 1/2; U.S. 4 1/2 - 104 1/2; U.S. 5 1/2 - 104 1/2.

Chicago Grain

Chicago, Feb. 23 - Grain prices fluctuated in a erratic manner. What was off 2 1/2 c at the opening...

Omaha Grain

Omaha, February 23. There was only a moderate run of wheat over the holiday, but a heavy run of corn...

Omaha Produce

Delivered by state of Nebraska, department of agriculture, bureau of markets and marketing.

Financial

The New York Times

New York, Feb. 23 - In a series of unusually interesting movements, today's stock and bond markets advanced under what was practically the largest business done on any day...

Big Business in Stocks

Transactions in stocks were the second largest thus far in 1922. They passed a million shares for 21 1/2 times in the year...

New York Quotations

Table of stock and bond quotations for New York, including various indices and individual stock prices.

RAILROADS

Table of railroad stock quotations, including American, Great Northern, and others.

INDUSTRIALS

Table of industrial stock quotations, including General Electric, Westinghouse, and others.

REUBER AND FINANCIAL

Table of commodity and financial market data, including wheat, flour, and interest rates.

NEW YORK STOCKS

Table of New York stock market activity, including volume and price changes.

NEW YORK BOND MARKET

Table of New York bond market activity, including Treasury and municipal bonds.

NEW YORK CATTLE MARKET

Table of New York cattle market activity, including receipts and prices.

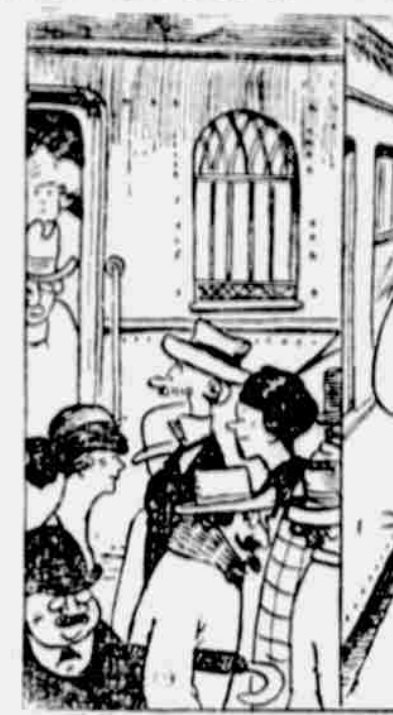
NEW YORK HOG MARKET

Table of New York hog market activity, including receipts and prices.

NEW YORK SHEEP MARKET

Table of New York sheep market activity, including receipts and prices.

THE GUMPS



THE ARRIVAL OF AUNT MARTHA

Market, Financial and Industrial News of the Day

Live Stock

Omaha, Feb. 23. Receipts - Cattle 1,000; Hogs 1,500; Sheep 2,000. Market steady.

New York Bonds

Liberty Bonds - 104 1/2; U.S. 4 1/2 - 104 1/2; U.S. 5 1/2 - 104 1/2.

Chicago Grain

Chicago, Feb. 23 - Grain prices fluctuated in a erratic manner. What was off 2 1/2 c at the opening...

Omaha Grain

Omaha, February 23. There was only a moderate run of wheat over the holiday, but a heavy run of corn...

Omaha Produce

Delivered by state of Nebraska, department of agriculture, bureau of markets and marketing.

NEW YORK STOCKS

Table of New York stock market activity, including volume and price changes.

NEW YORK BOND MARKET

Table of New York bond market activity, including Treasury and municipal bonds.

NEW YORK CATTLE MARKET

Table of New York cattle market activity, including receipts and prices.

NEW YORK HOG MARKET

Table of New York hog market activity, including receipts and prices.

NEW YORK SHEEP MARKET

Table of New York sheep market activity, including receipts and prices.

NEW YORK STOCKS

Table of New York stock market activity, including volume and price changes.

NEW YORK BOND MARKET

Table of New York bond market activity, including Treasury and municipal bonds.

NEW YORK CATTLE MARKET

Table of New York cattle market activity, including receipts and prices.