

Kodaking Through Nebraska

Albion Photos and Some Scenes From Cherry County



Ducks retreat near Valentine



The race track at Albion



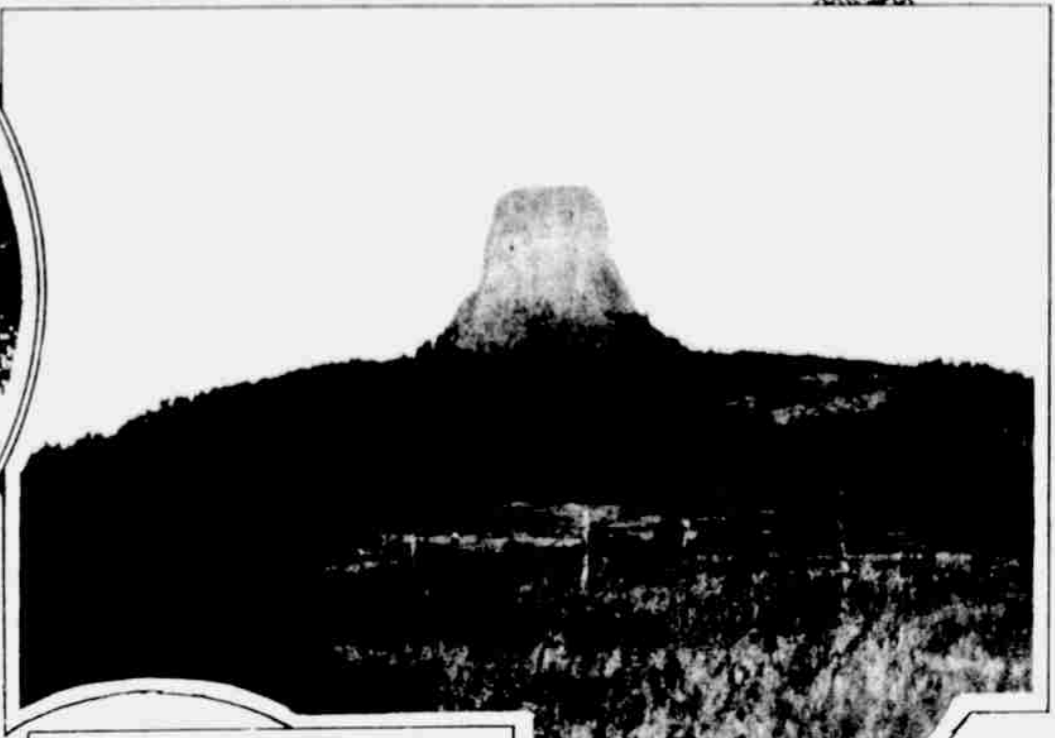
An unusually good snapshot taken in the "duck country" near Valentine.



Scene from the "Hunter's Paradise" section of Cherry county



Public library, Albion



Lone butte standing as a sentinel in northwestern Nebraska.



Buffaloes on government reservation near Valentine.



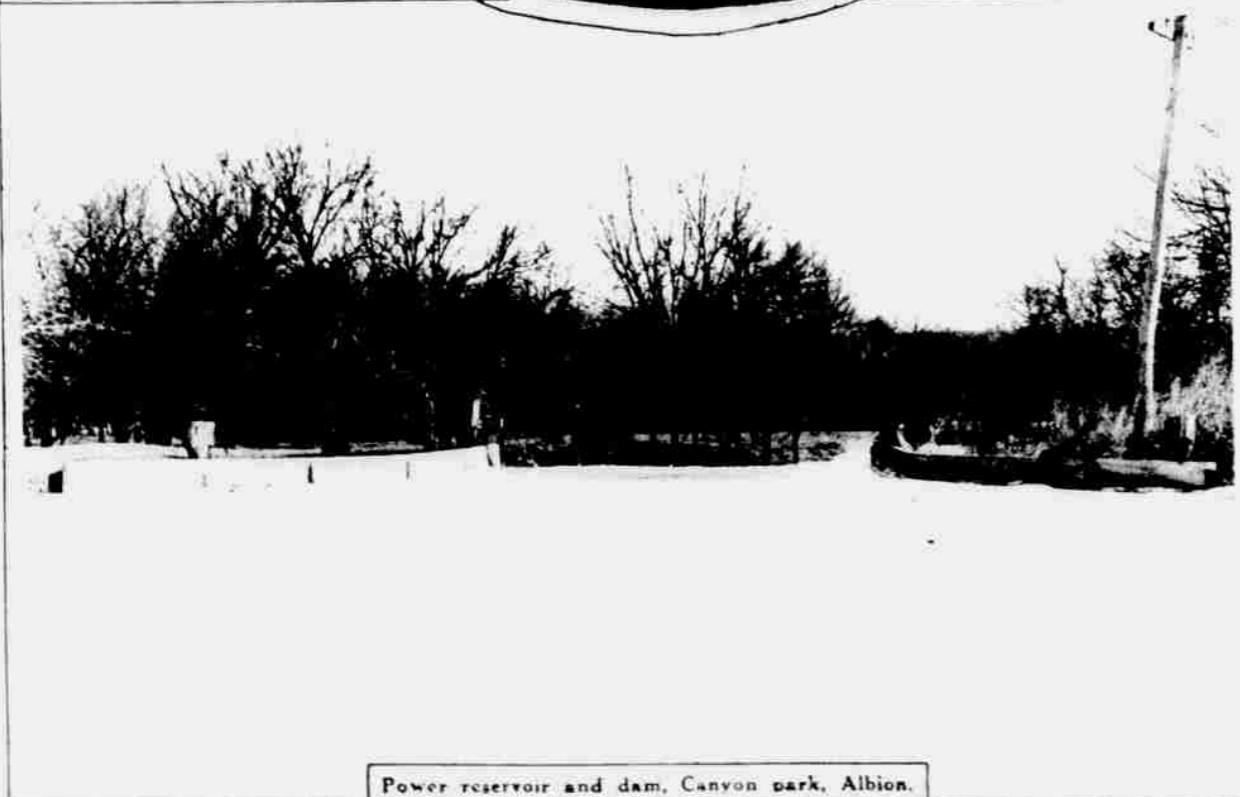
Albion High school band.



Road through dense Cherry county woods.



Part of the herd of 184 registered Percheron thoroughbreds on the T. B. Bowman ranch near Albion.



Power reservoir and dam, Canyon park, Albion.



Albion High school.