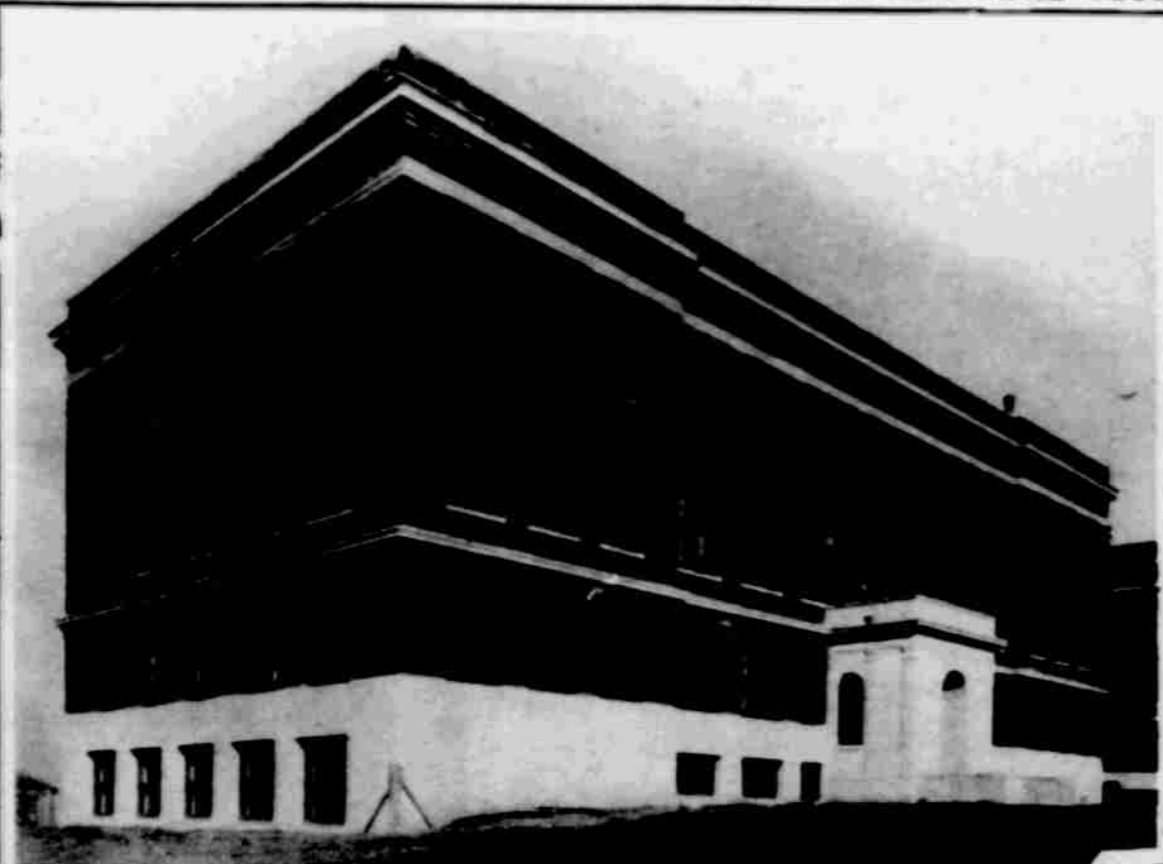


# Photographic Survey of New Omaha Buildings and Work in Progress on 1922 Construction Program



New dental college building, Creighton university campus. All photos by Bostwick



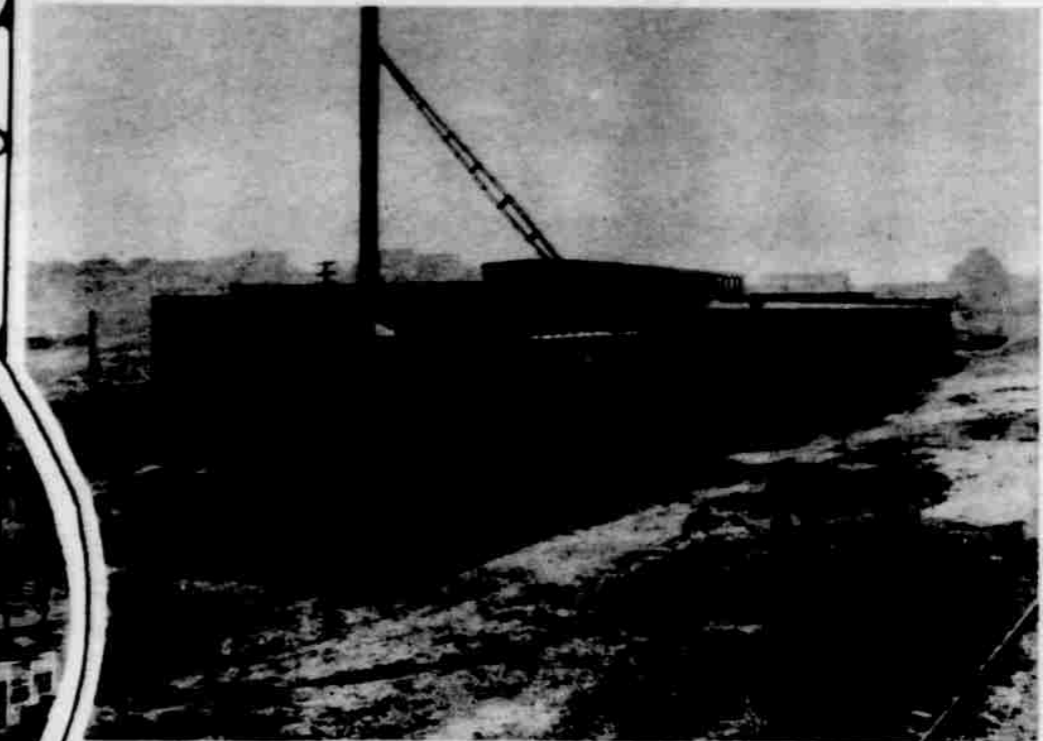
One of the partly finished buildings of the group under construction at Bellevue to house the extensive educational facilities of the Chinese Mission Society



The new Hotzberg building, 1519-21 Douglas street.



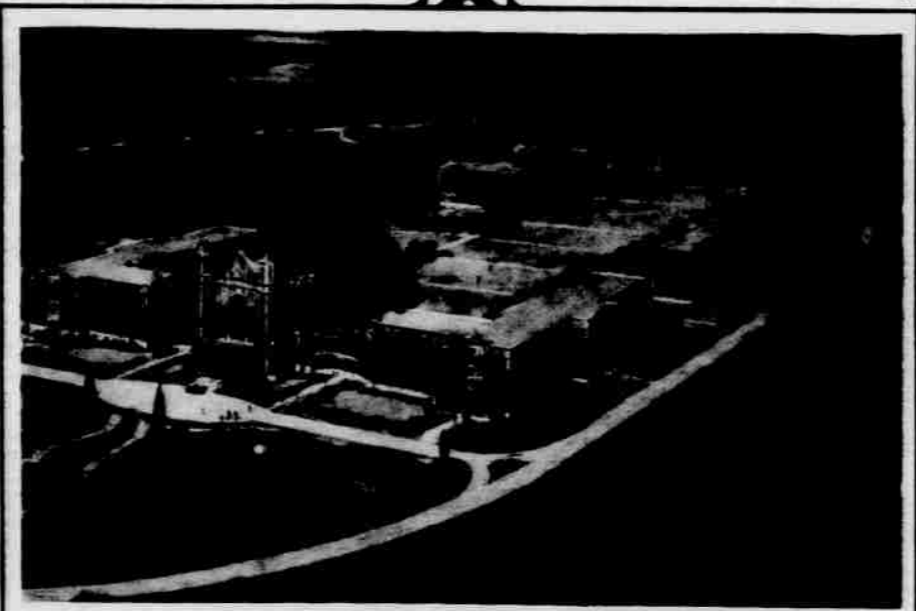
Workmen are putting the finishing touches on the World theater building, Fifteenth and Douglas sts



Recently completed wool pulling warehouse, South Omaha



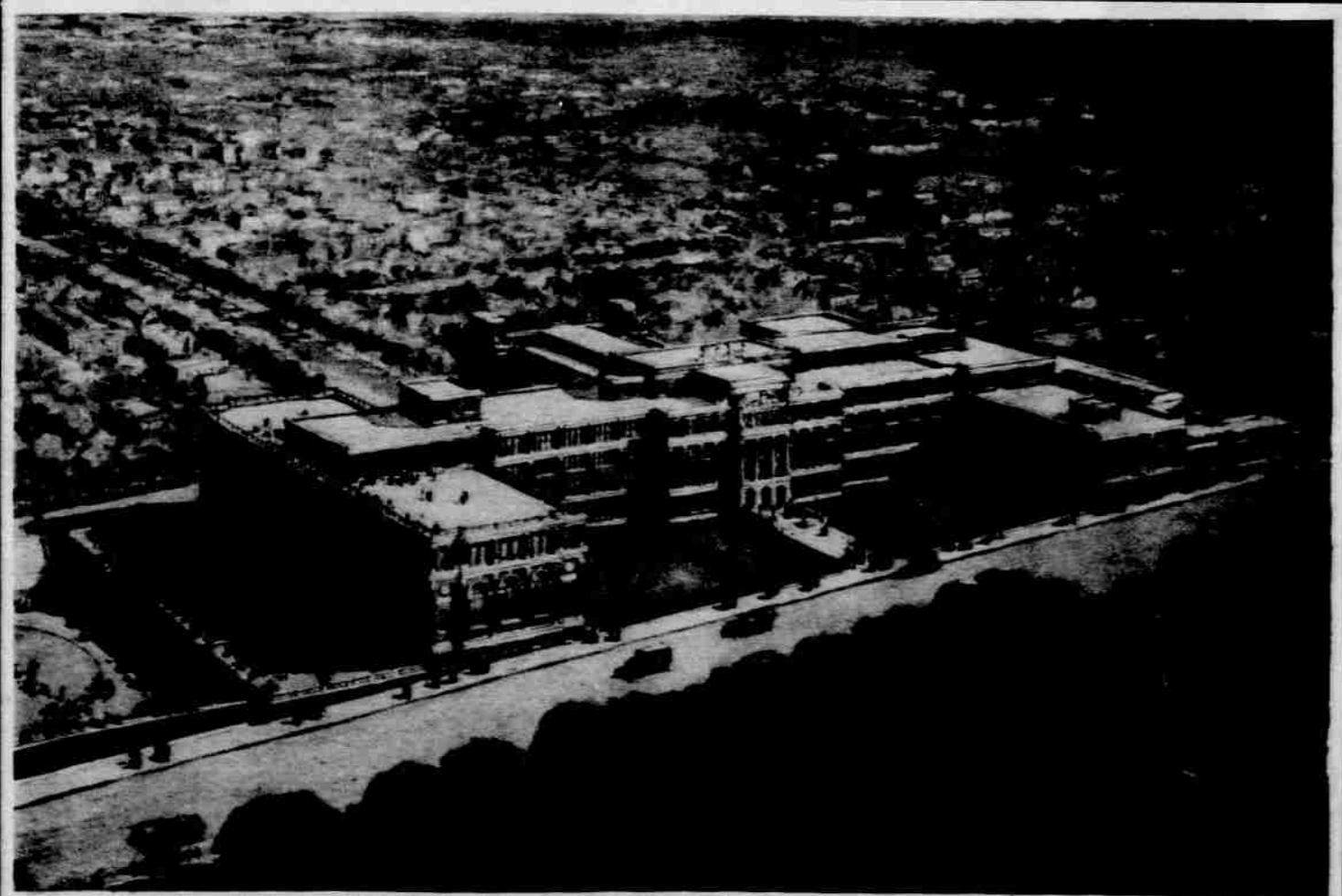
Recently completed Standard Oil Company building, Eighteenth and St. Mary's streets.



Photograph from architect's drawing, showing how Chinese mission society group at Bellevue will appear when completed. Estimated cost of the buildings is \$25,000,000. Priests from all over the world will assemble here for special training for Chinese missionary work.



Completing excavation for big Medical Arts Building, Seventeenth and Dodge streets.



How Omaha's new Technical high school will look when finished. Photo from architect's drawing. Estimated cost of the building is \$3,000,000.



Contractors are speeding construction work on Technical high school, Thirty-second and Cumins streets.