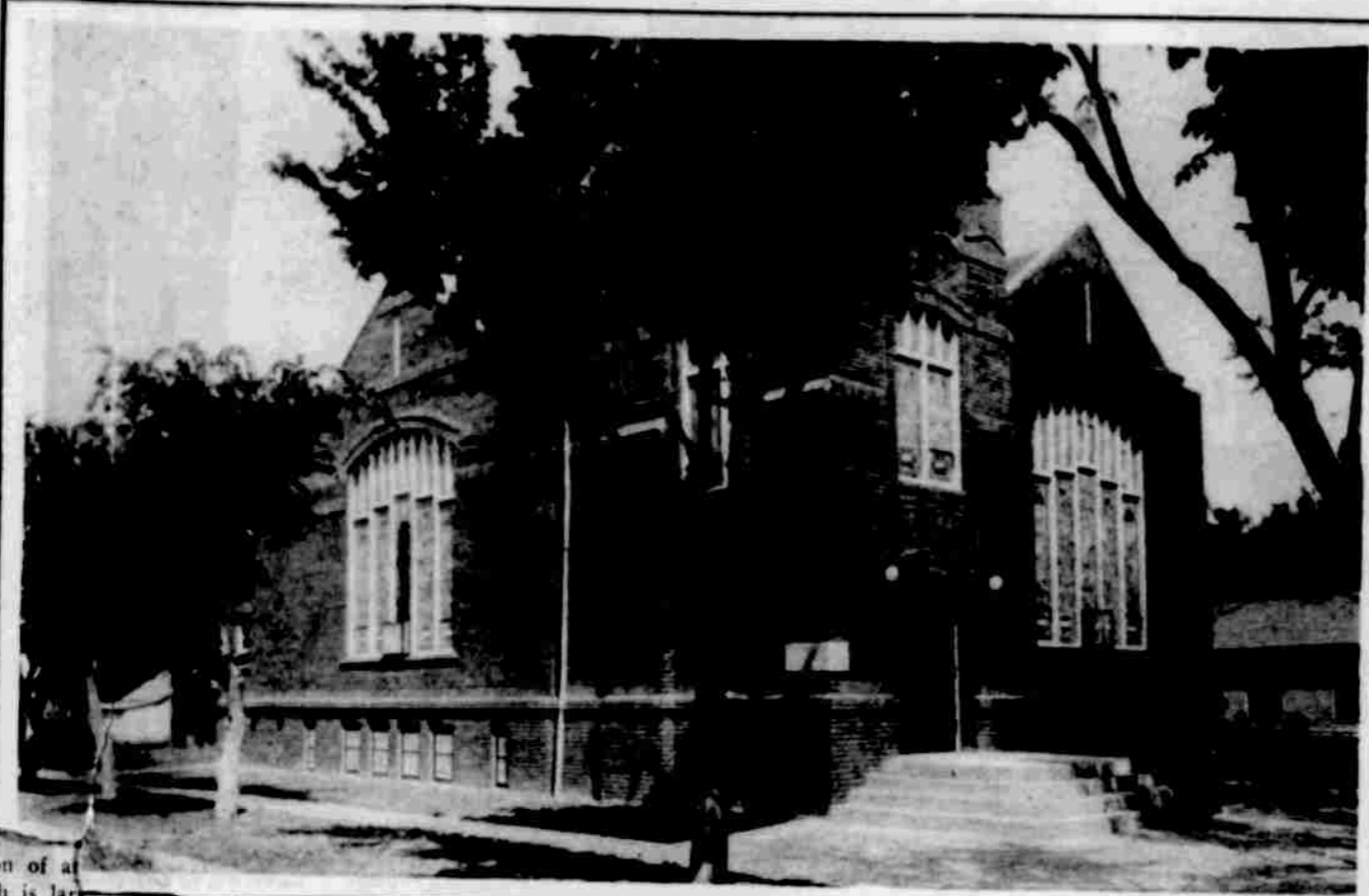
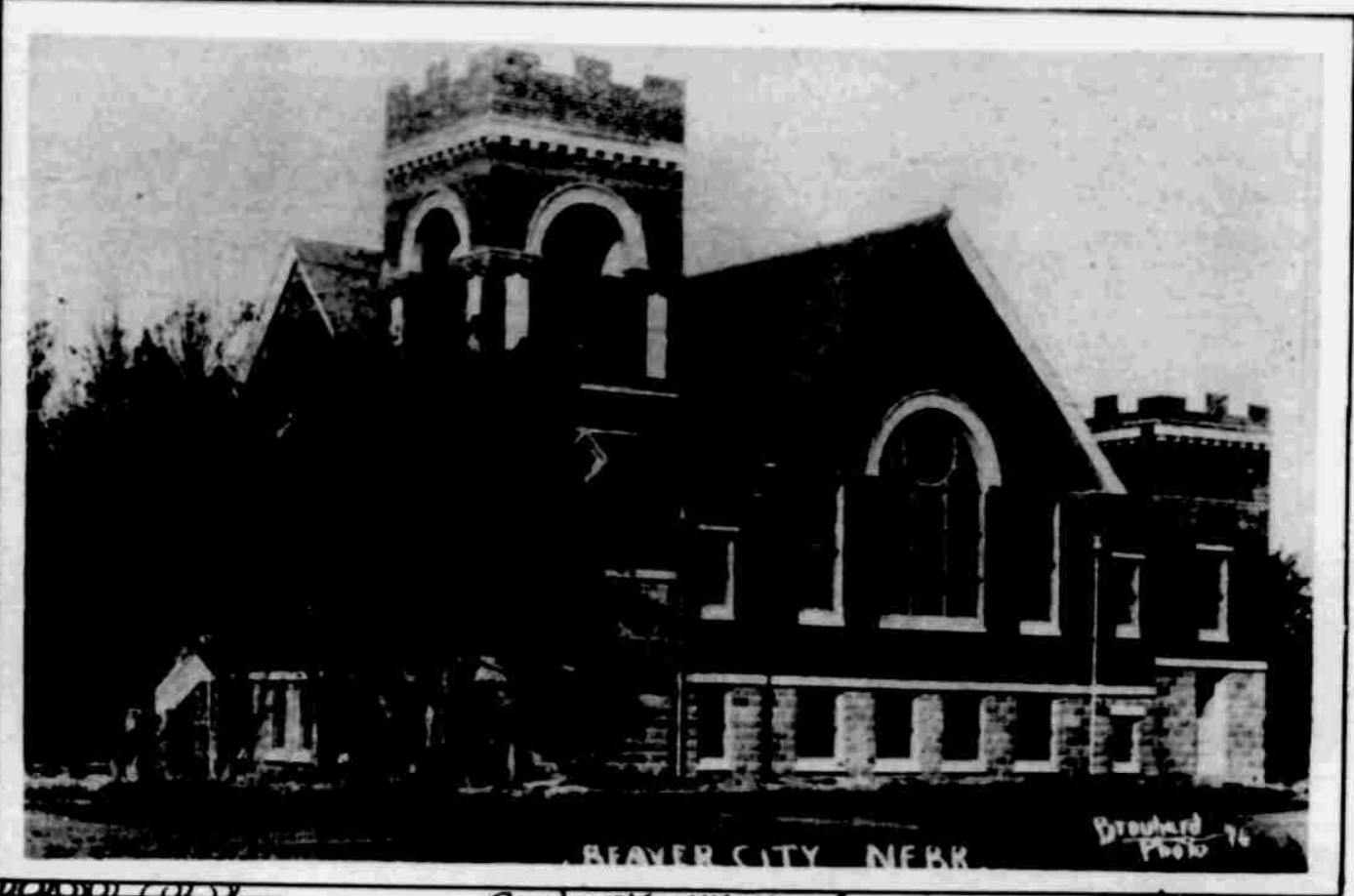


Churches of Nebraska's Smaller Cities



First Baptist Church, Loup City.



Beaver City M.E. Church.



First Presbyterian Church, Gothenburg.



Sacred Heart Church, Greeley.



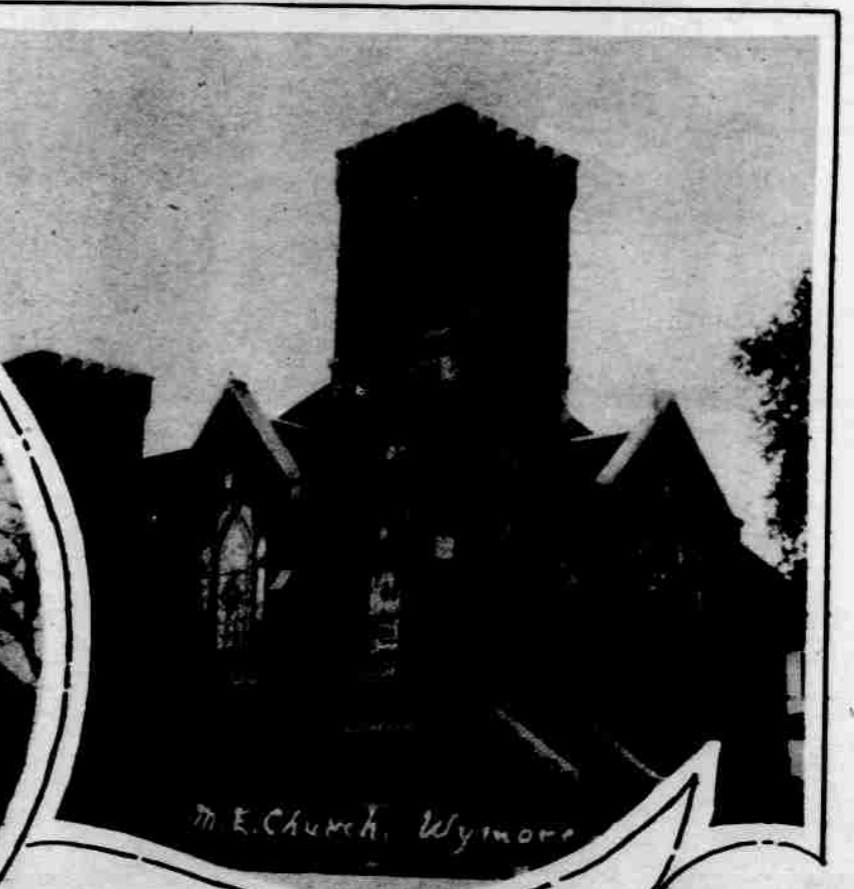
M.E. Church, Randolph.



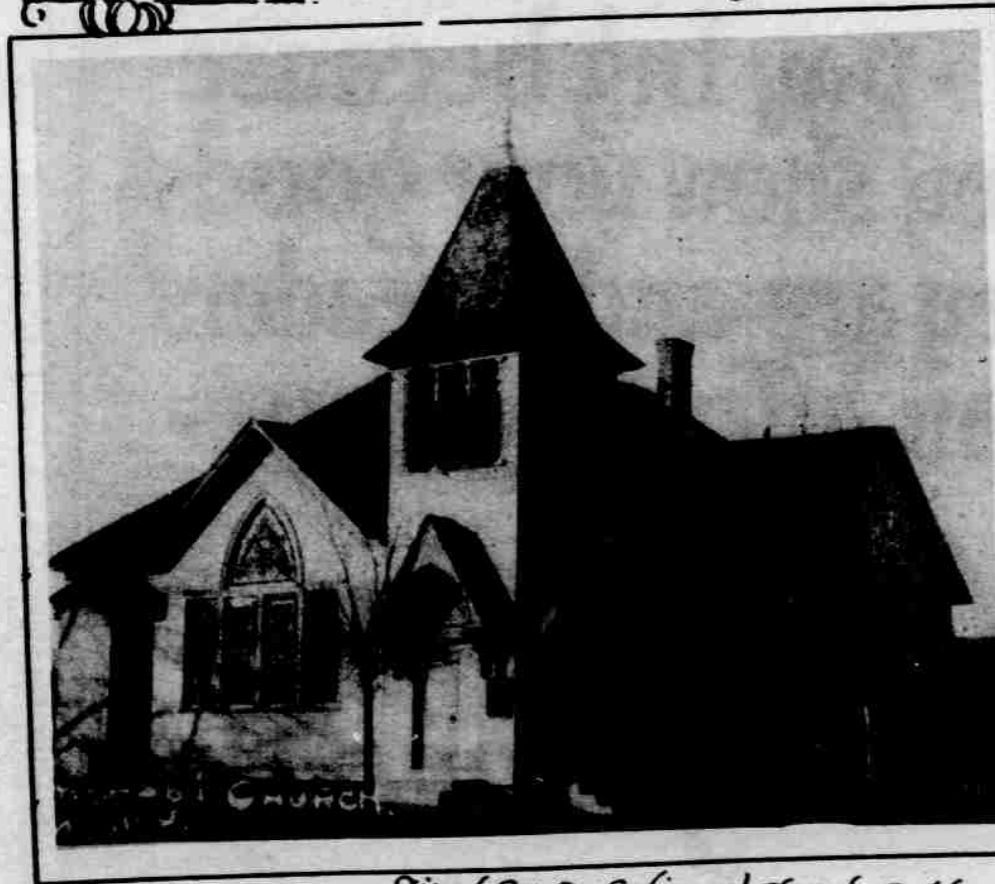
Methodist Church, Gothenburg.



Congregational Church, Cambridge.



The Wymore M.E. Church.



First Congregational Church, Sutton.



Presbyterian Church at St. Edward.



St. Mary's Catholic Church, David City.

U
ON
R
Exch
By A
Wash
the U
lance
tional
ca. M
rchab
pou
rou
Reduction of a
of which is lar
or European in
se are the esse
tabilization of
ge set forth in
today by the
on of the inter
mission, of whic
mercer Hoove
while the high ce
ents North and
countries only and
uation is discuss
in stabilizing
change, the vic
section are pa
because they
of the admini
nomic proble
Mus
"A review
—the weak
storm cen
and finan
evitable co
no stabili
any foot
tion of
tinent
"In
halan
are
pend
unsee
nar
arm
dis
dom
Ead
agre
polit
fisc
excl
me
by
are
able
dir
forec
can
worl
place
have
secur
ie se
habil
but
prac
ple
com
ment
Fea
B
wo
fig
at
g
in
litte
ing
to
is
Le
In
of
by
to
able
to
the
com
gres
was
tere
ing
adju
be
wit
B
S
to
ab
in
the
R
B
T
the
her
com
goll
ing
B
S
Ashe
are
Spa
the
from
rea