

Photos by Louis R. Bostwick

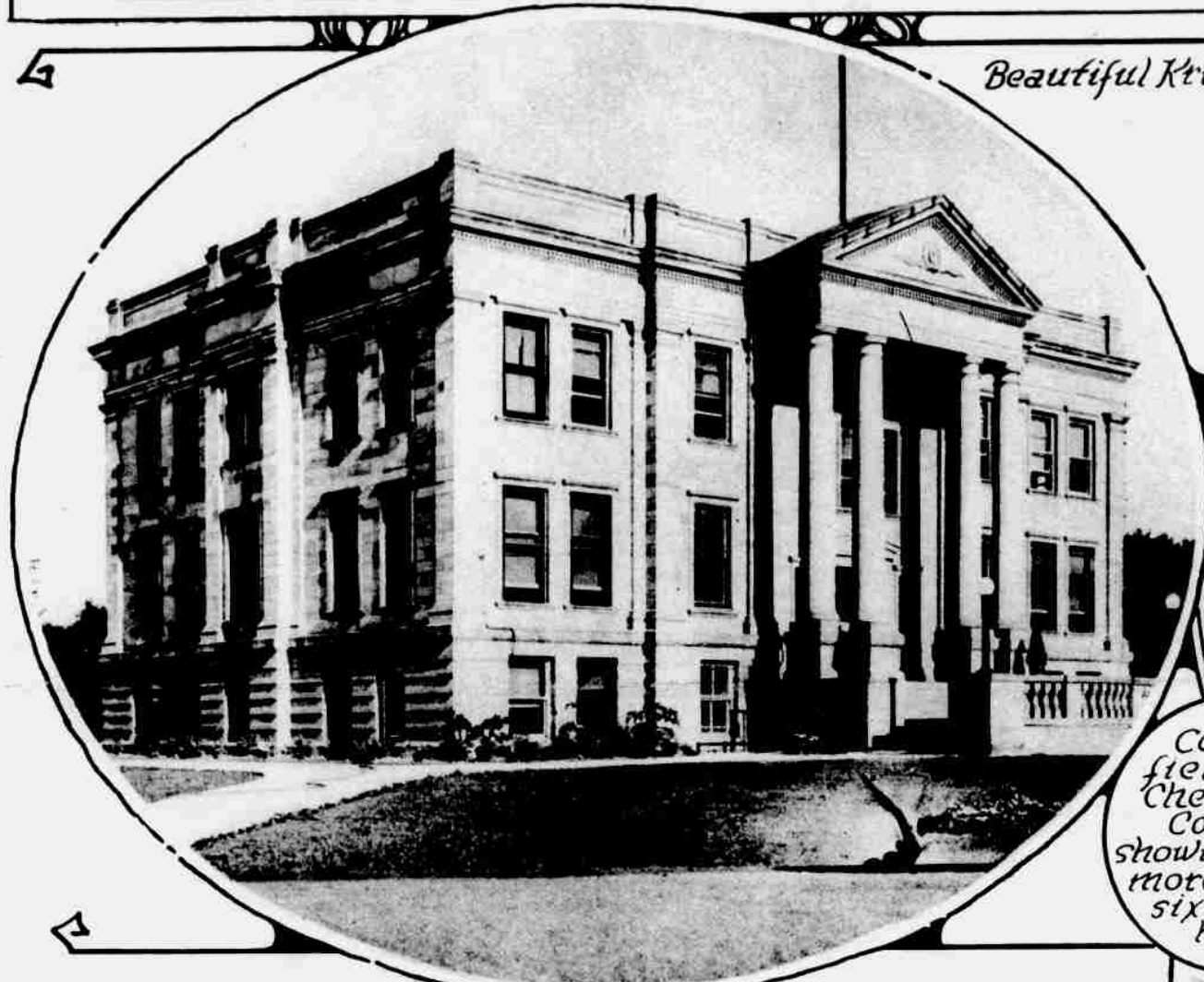
Where Once Lay The Great American Desert land Where Sagebrush and Gopher Once Held Sway Blossoms into Fruitful Prosperity



Beautiful Kruger's Lake, six miles east of Sidney



Along the banks of Lodge Pole Creek, Cheyenne County



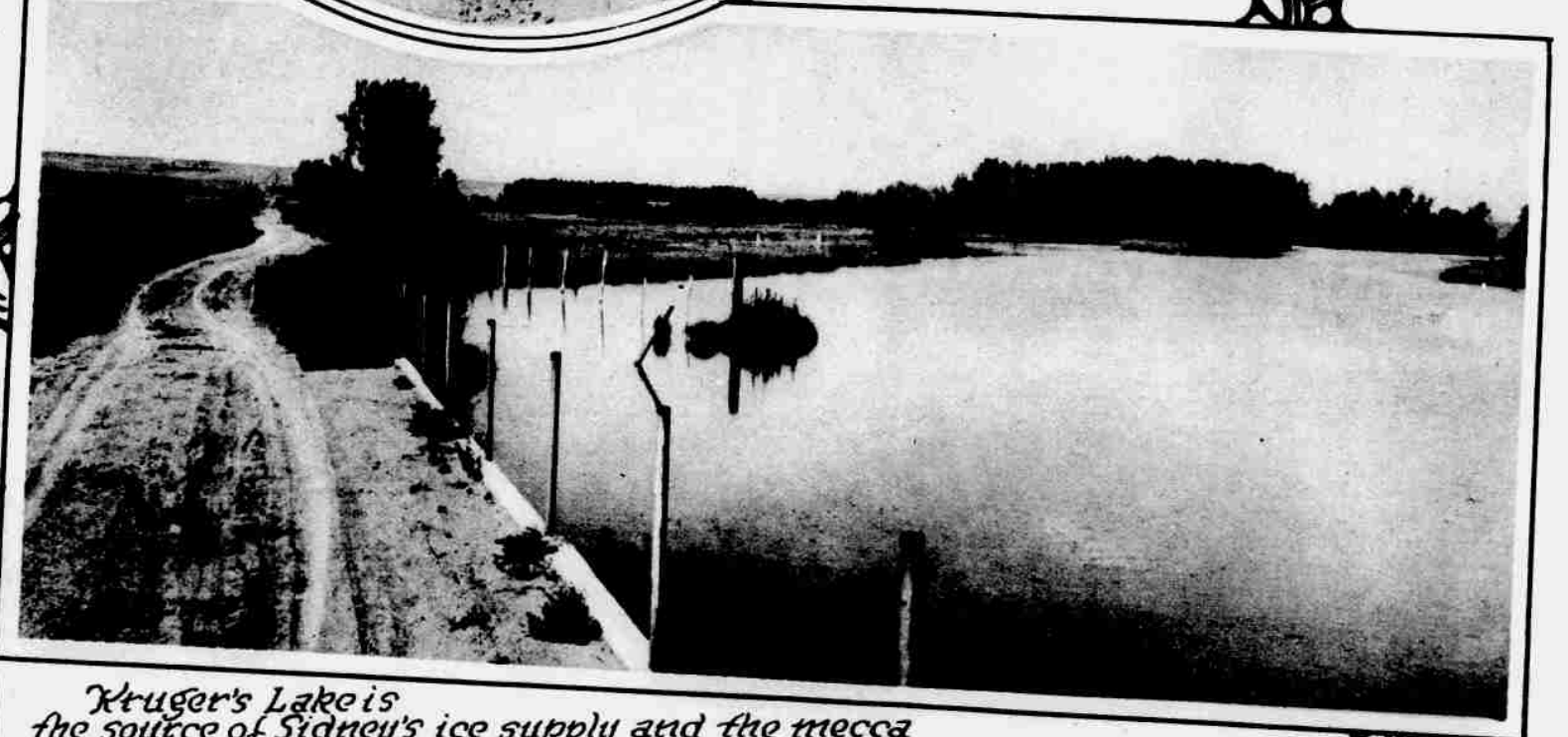
Cheyenne County Court House, one of the finest and most completely equipped public buildings in the state. The building and parked grounds occupy an entire block in the center of Sidney.



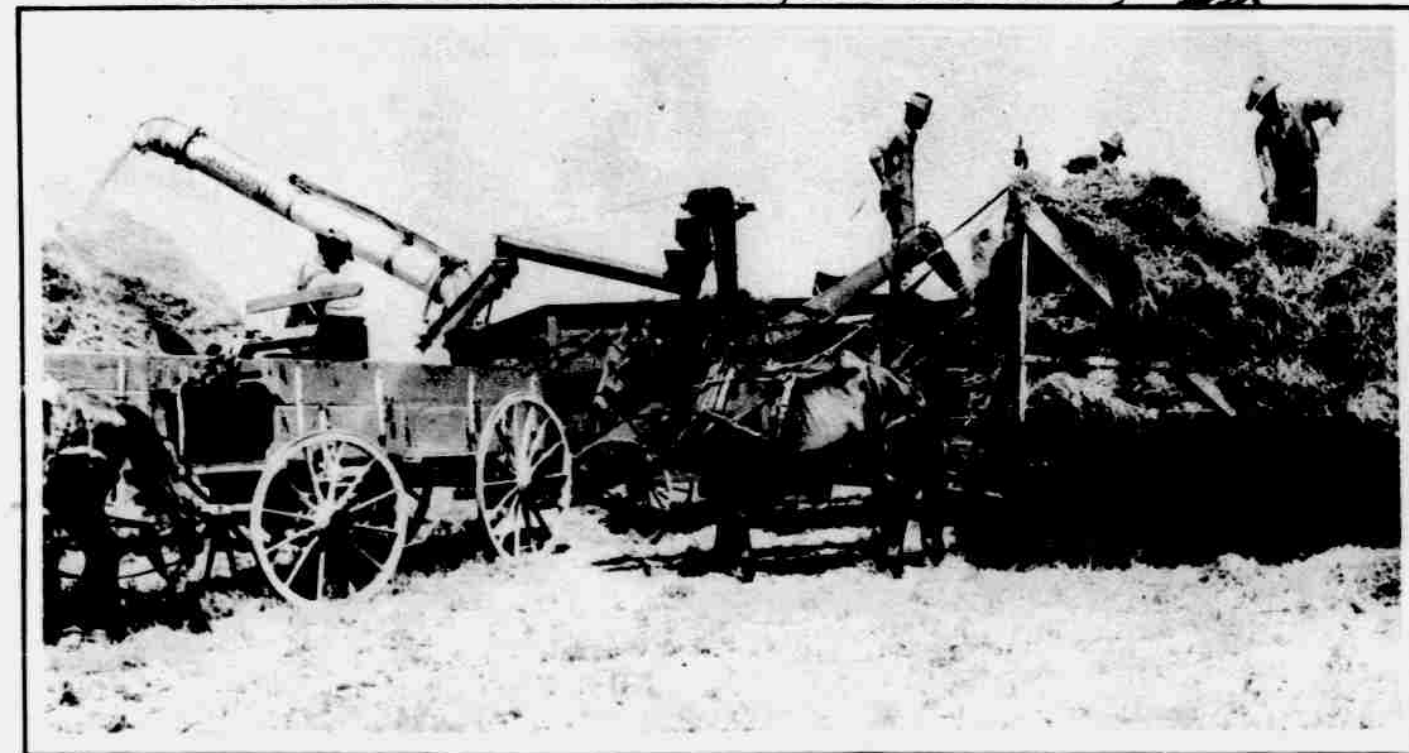
Corn field in Cheyenne County, showing stalks more than six feet high



Wheat stacks on the Nels W. Olson farm near Sidney.



Kruger's Lake is the source of Sidney's ice supply and the mecca for winter skating parties.



Threshing scene on the farm of D. P. Ellis, a mile east of Sidney.



A view of the principal business street of Sidney.