

KODAKING THROUGH NEBRASKA KEARNEY

One of a Series of Bee Rotogravure Pages Showing Scenes and People of Nebraska Cities



Below the Spillway of Central Power Co. Canal and Irrigation Ditch



State Industrial School, Kearney



Administration Building State Hospital for Tubercular



Esther Stock Kroger Secretary Kearney Chamber of Commerce



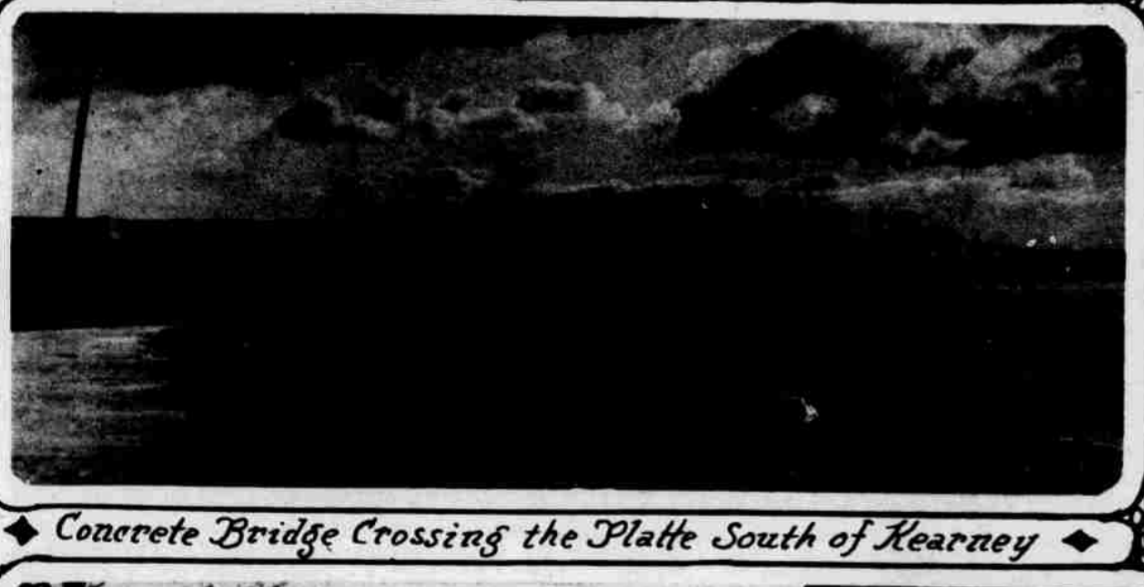
The New Kearney Half-Million Dollar Post Office



Main Building Kearney State Normal School



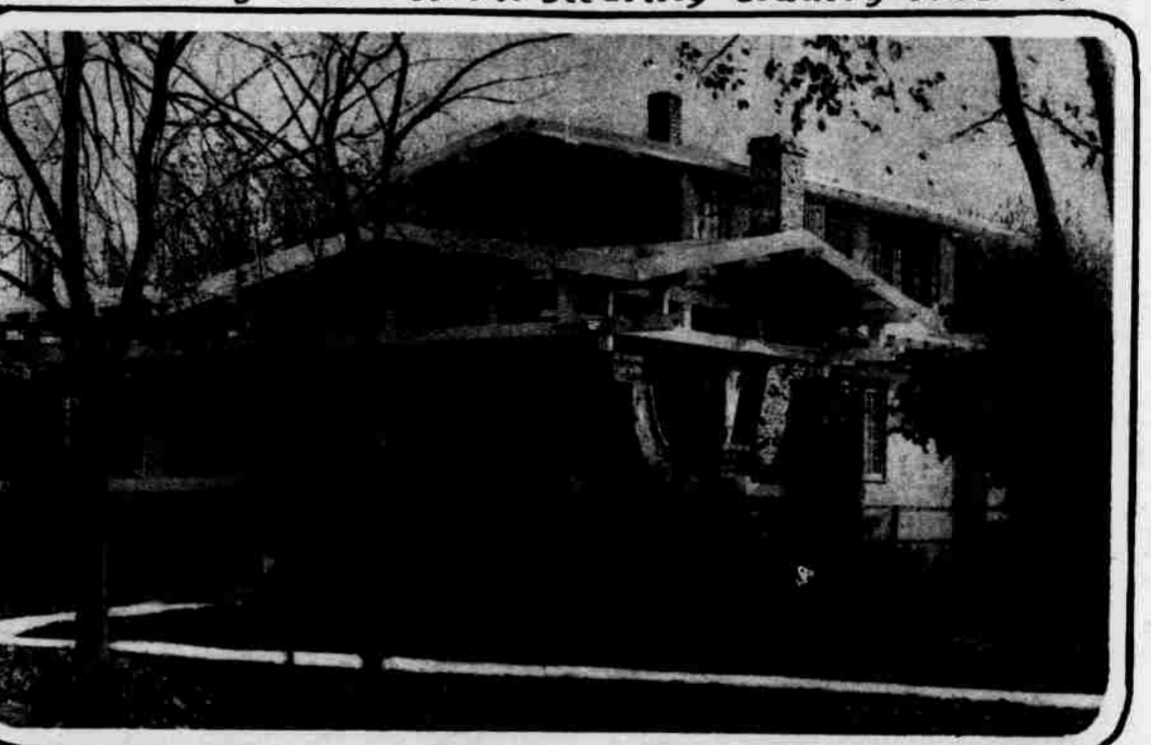
Boating Scene on the Kearney Country Club



Concrete Bridge Crossing the Platte South of Kearney



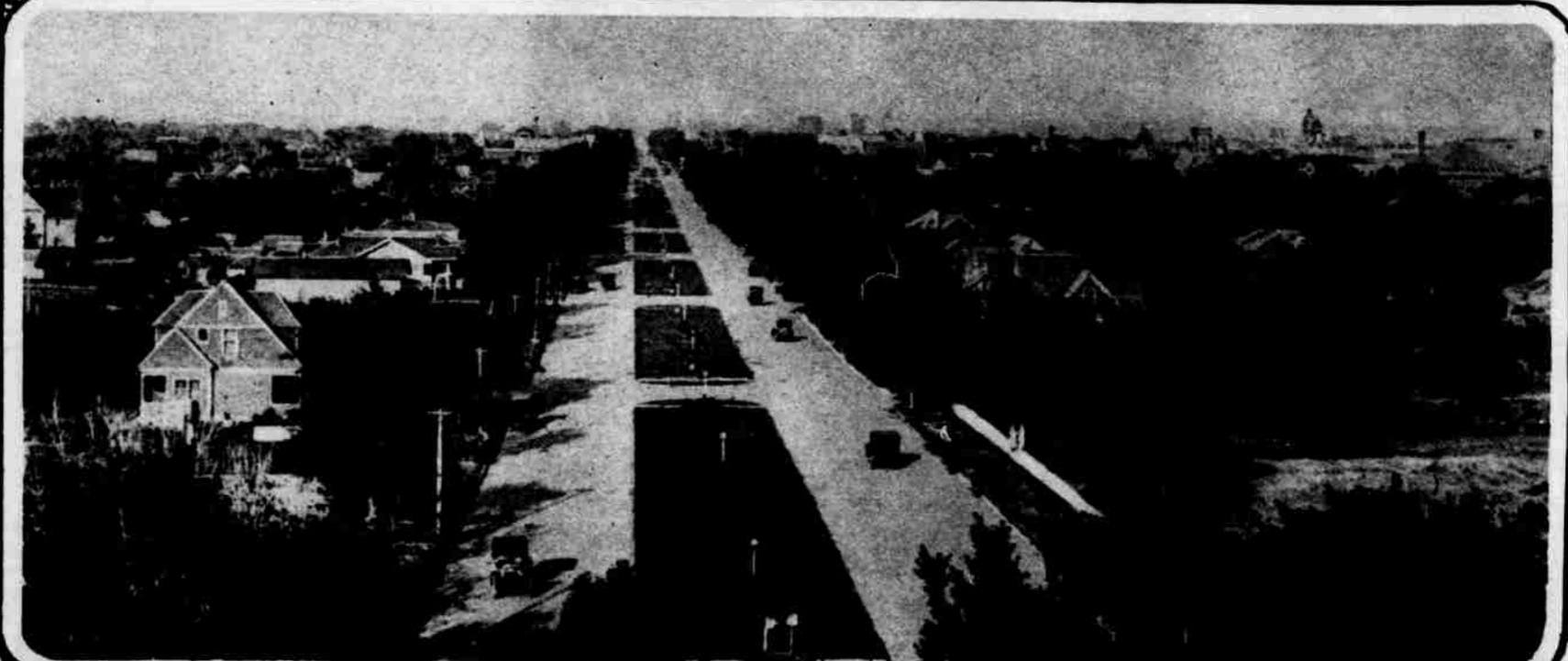
H. D. "Alfalfa" Watson admiring a tree planted fifty years ago. He is credited with introducing alfalfa into Nebraska.



Bungalow Home of Cecil Gibbons



Administration Building Kearney Military Academy



Bird's Eye View of Kearney's Central Parking System, taken from Normal School