

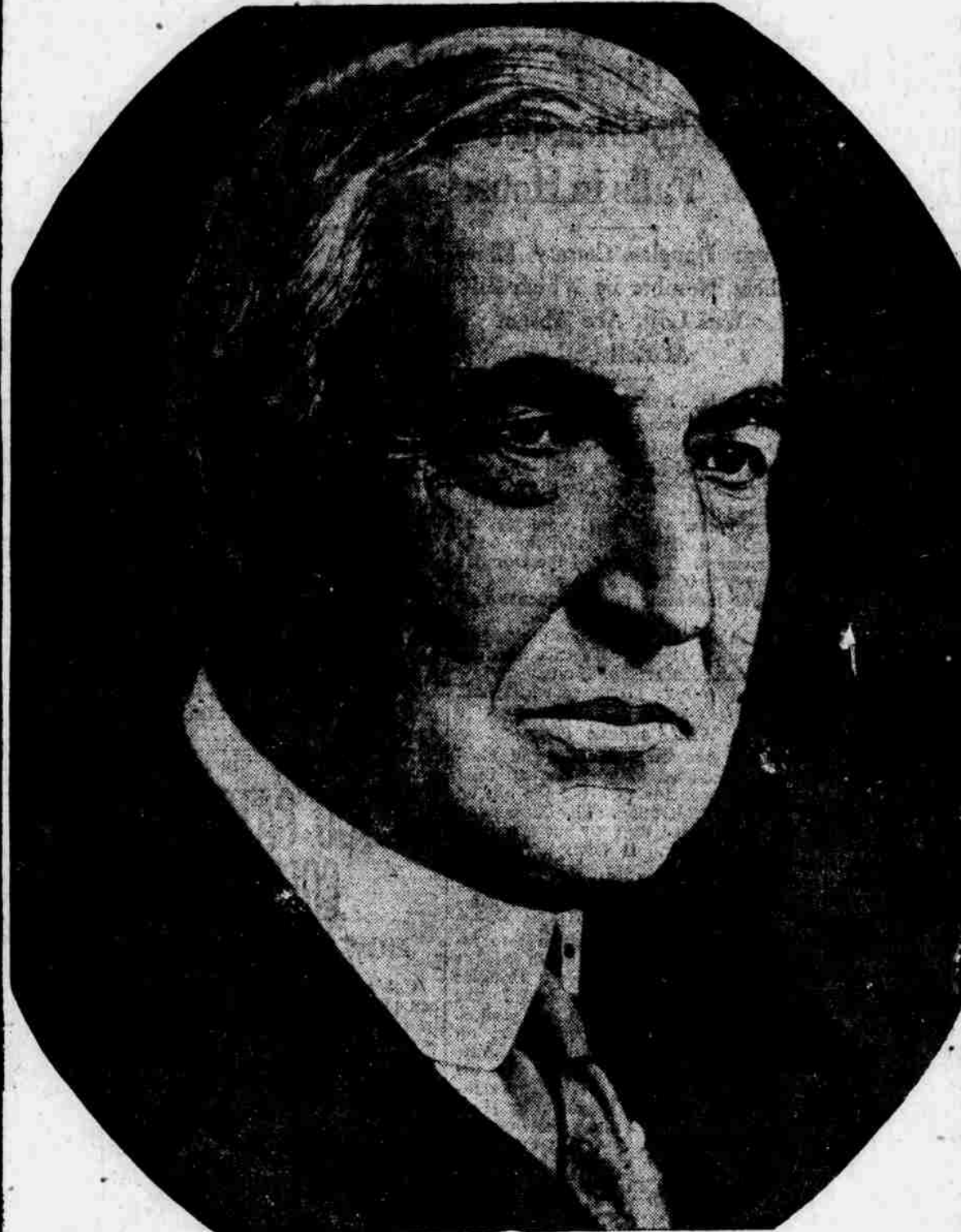
IF YOU MAY DEE

Extracts From Harding's Acceptance Speech

"I want, somehow, to appeal to the sons and daughters of the Republic, to every producer, to join hand and brain in production, more production, honest production, patriotic production, because patriotic production is no less a defense of our best civilization than that of armed force.

"The human element comes first, and I want the employers in industry to understand the aspirations, the convictions, the yearnings of the millions of American wage-earners, and I want the wage-earners to understand the problems, the anxieties, the obligations of management and capital, and all of them must understand their relationship to the people and their obligations to the Republic. Out of this understanding will come the unanimous committal to economic justice, and in economic justice lies that social justice which is the highest essential to human happiness.

"Here is a temple of liberty no storms may shake, here are the altars of freedom no passions shall destroy. It was American in conception, American in its building, it shall be American in the fulfillment. Sectional once, we are all American now, and we mean to be all American to all the world."



PRESIDENT HARDING

WITHOUT VISION

The Omaha Liberty Fire Insurance Company inaugurated at its inception the sound principles of *Fidelity—Integrity* and *Fairness*. The company that inculcates such principles in its business, *progresses*. The one which overlooks them stagnates. Progress is founded upon merit, and merit is the combination of service and system, galvanizing energy and life in all its activities. Principle inevitably brings prosperity to that company and to everyone associated with it.

OMAHA LIBERTY FIRE

P. F. ZIMMERMAN

INCOME 1920		
Balance, January 1st, 1920		\$ 307,826.02
Paid in Cash Capital and Surplus		380,047.65
Premiums (Less Cancellations)		648,672.96
Interest on Investments		12,561.56
Total		\$1,349,108.19
DISBURSEMENTS 1920		
Paid for Losses and Adjusting		\$ 164,887.18
Paid for Re-Insurance		175,208.11
Commissions and Agents Allowances		161,195.89
Special Agents and Traveling Expenses		5,996.64
Salaries of Home Office Employees		10,023.91
Office Rent		2,400.00
Furniture, Maps, and Inspections		1,882.31
Taxes and State Insurance Department Fees		7,863.20
Postage, Telephone, Advertising and Printing, etc.		37,032.90
General Expenses, Establishing Company in Business		18,389.22
Other Expenditures		12,406.47
Dividends and Interest		7,210.88
Balance		744,611.68
Total		\$1,349,108.19