

**Classified Advertising Rates**

10¢ per line (count 8 words to 1 line) 1 day  
15¢ per line per day, 2 consecutive days  
20¢ per line per day, 3 consecutive days  
25¢ per line per day, 4 consecutive days  
30¢ per line per day, 5 consecutive days  
These rates apply either to the daily or Sunday Bee. For a full description of rates for both morning and evening dailies, apply for the rate card.  
CONTRACT RATES ON APPLICATION.  
Want ads accepted at the following offices:  
MAIN OFFICE, 1117 and Farnam St.  
Evening Edition, 1117 and Farnam St.  
Morning Edition, 1117 and Farnam St.  
Saturday Edition, 1117 and Farnam St.  
WANT ADS IN THE PHONE AT TYLER 1000.  
THE BEE will not be responsible for the loss of the original copy of an advertisement ordered for more than one insertion.  
CLOSING HOURS FOR WANT ADS:  
Evening Edition, 1117 and Farnam St., Monday, Tuesday, Wednesday, Thursday, Friday, 5:30 P. M.  
Saturday Edition, 1117 and Farnam St., 10:00 P. M.

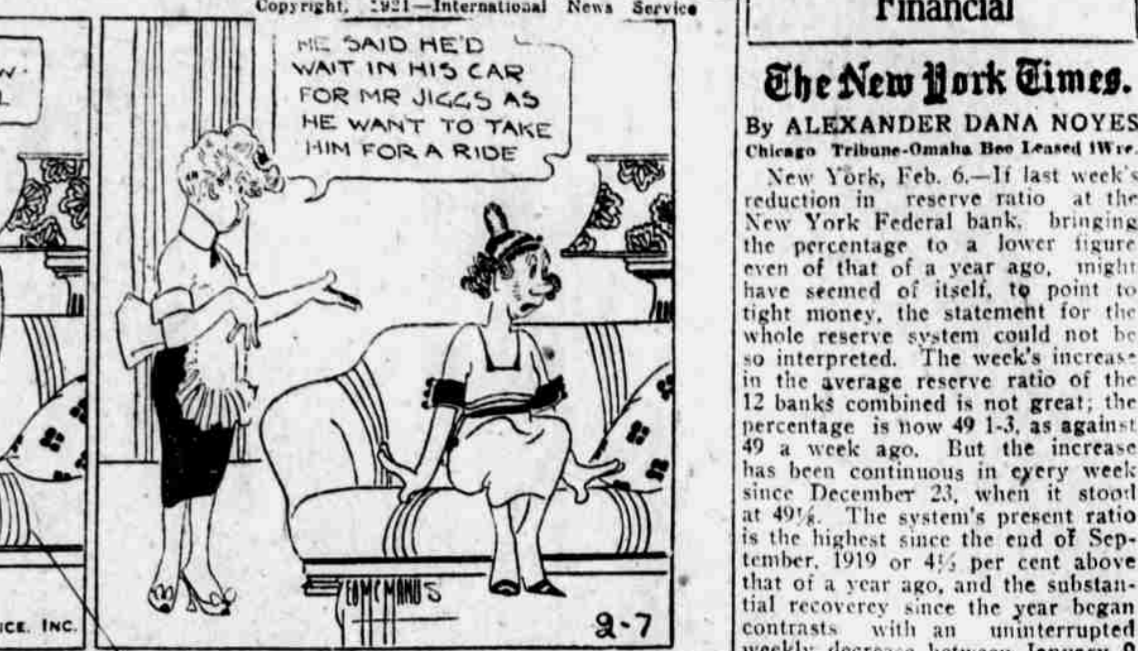
**BRINGING UP FATHER---**



**SEE JIGGS AND MAGGIE IN FULL PAGE OF COLORS IN THE SUNDAY BEE**



**Drawn for The Bee by McManus**



**DEATH & FUNERAL NOTICES**

**BATJIAN**—Mrs. Margaret, aged 74 years, passed away suddenly at family residence, Saturday, February 6, 1921. Survived by two daughters, Mrs. Mae and Mrs. Margaret, and eight sons, Walter, Michael, James, Thomas, George, Patrick, Leo and John, all of Omaha. Funeral Tuesday, 9:45 a. m., from family residence, 428 1/2 26th St., to St. Dunstan's church, a. m. Interment, Holy Sepulcher cemetery.

**REYNOLDS**—Nellie B., aged 51, most beloved wife of J. H. Reynolds, died at Memorial Hospital, at 1117 and Farnam St., Sunday, February 7, 1921. Funeral services will be held from family residence, 1015 S. 26th Street, Monday, at 2 p. m. Interment Forest Lawn cemetery.

**FUNERAL DIRECTORS**

**STACK & FALCONER**  
318 and 320 Farnam St.

**PIERCE AMBULANCE SERVICE**  
318 and 320 Farnam St.

**HULSE & RIEPEN**  
PIONEER FUNERAL DIRECTORS  
271 South 16th St., Phone 2426.

**HEAFY & HEAFY**  
Underwriters and Embalmers  
124 and 126 Farnam St., Phone 1000.

**FOR AMBULANCE** call South 630, Korvick Funeral Home, 230 and O Sts.

**FLORISTS**

**LEE L. LARSON** Florist  
1314 Douglas St., Phone 4234.

**JOHN BATH**, 1815 and Farnam, I. 2304.

**LOST, FOUND AND REWARDS**

FOR ARTICLES LOST on street cars telephone booth, 1117 and Farnam St., call for return. Reward \$10.00.

LOST—Lady's watch on 25th or 24th street between F and N. Initials H. C. W. on back. Reward, Call South 4132.

LOST—Beaver hat, Friday afternoon, downtown. Liberal reward. Return to 1117 and Farnam St., Phone 4234.

BOOK of Economy Furniture Co., Kansas City, Mo., if found, Web. 1303.

**PERSONAL**

THE SALVATION ARMY Industrial home solicits your old clothing, furniture, magazines, etc. We will distribute. Phone Doug. 415 and our wagon will call. Call and inspect our new home, 318 and 320 Farnam St.

**PATENT ATTORNEYS**

**J. H. MARTIN**, patent atty., 1116 Dodge St.

**MIPKIN NATIONAL INVENTIVE AGENCY**, incorporated, Douglas 107, Suite 304, Paxton Block, Omaha, Neb.

**SAY IT WITH FLOWERS FROM HESS & WOODRUFF**, 1117 and Farnam St.

**SWEDISH MASSAGE**, by massage, Doug. 5437.

**RENT**, vacuum cleaner, 511 W. 19th St.

**MASAGE**, 210 North 10th St., Web. 5285.

**ELECTRO** massage, 318 Neville Bldg.

**ANNOUNCEMENTS**

**Dancing Academies**

**KEEPS—HOTEL** ROSE. LET KEEPS teach you to dance. Special attention given. Satisfaction assured. Doug. 2381, Mar. 2792.

**Kel-Pine School for Dancing**, 2424 Douglas Bldg., Doug. 785.

**Detectives**

**RELIABLE Detective Bureau**, Railway Ex. Bldg., Doug. 2085, Night Call 2113.

**JAMES ALLAN**, 312 Neville Bldg. Evidence secured in all cases. Tyler 1128.

**Miscellaneous Announcements**

**ORDER** taken for diamonds cakes by mail—class catalogue, 1117 and Farnam St.

**ACCORDION**, side, knife, sundries, box piecing, covered buttons, all sizes and styles; benching, piano, editing, etc. out. Work, butchery, peddling, ideal button and piecing. Call 248 Douglas Bldg., Doug. 192.

**PAXTON HOTEL TURKISH BATH**, Massage, hot brooks.

**CONCANNON BROS., TYLER 571.**

**COMPRESSED AIR PAINTING EQUIPMENT**, G. A. Robertson, 274 First Nat. Bank, Doug. 9045 or 9047.

We do all kinds of painting, repairing. See our book of plans on bungalows, 64 pages. Dickson & Newman, 80, 2784.

**OMAHA WELDING CO.**, "The Careful Welders," 1515 and Jackson, D. 4287.

**FULL** dress suits and tuxedos for rent, 128 N. 16th St., Phone 2143.

**OMAHA Towel Supply**, 207 11th St., D. 4282.

**UPPER** hand painting, 1117 and Farnam St.

**FOR SALE**

**Furniture and Household Goods**

IN going through your attic, don't you find a lot of household articles, pictures and other articles that you have not used for years? They are just waiting for someone to take them. If you are interested in these articles, call on us. We will buy them for you. We have a large stock of household goods, and we are always looking for more. Call on us. We will buy them for you. We have a large stock of household goods, and we are always looking for more. Call on us. We will buy them for you.

**ELBERT** new mahogany dining room set for sale. 2525 Calif. Rd. 5215; no dealers.

**TWO** big leather chairs, 4203 Lake St.

**Pianos and Musical Instruments**

**BIGGEST** phonograph bargains in town—\$25.00, \$35.00, \$50.00, \$75.00, \$100.00, \$125.00, \$150.00, \$200.00, \$250.00, \$300.00, \$350.00, \$400.00, \$450.00, \$500.00, \$550.00, \$600.00, \$650.00, \$700.00, \$750.00, \$800.00, \$850.00, \$900.00, \$950.00, \$1000.00, \$1050.00, \$1100.00, \$1150.00, \$1200.00, \$1250.00, \$1300.00, \$1350.00, \$1400.00, \$1450.00, \$1500.00, \$1550.00, \$1600.00, \$1650.00, \$1700.00, \$1750.00, \$1800.00, \$1850.00, \$1900.00, \$1950.00, \$2000.00, \$2050.00, \$2100.00, \$2150.00, \$2200.00, \$2250.00, \$2300.00, \$2350.00, \$2400.00, \$2450.00, \$2500.00, \$2550.00, \$2600.00, \$2650.00, \$2700.00, \$2750.00, \$2800.00, \$2850.00, \$2900.00, \$2950.00, \$3000.00, \$3050.00, \$3100.00, \$3150.00, \$3200.00, \$3250.00, \$3300.00, \$3350.00, \$3400.00, \$3450.00, \$3500.00, \$3550.00, \$3600.00, \$3650.00, \$3700.00, \$3750.00, \$3800.00, \$3850.00, \$3900.00, \$3950.00, \$4000.00, \$4050.00, \$4100.00, \$4150.00, \$4200.00, \$4250.00, \$4300.00, \$4350.00, \$4400.00, \$4450.00, \$4500.00, \$4550.00, \$4600.00, \$4650.00, \$4700.00, \$4750.00, \$4800.00, \$4850.00, \$4900.00, \$4950.00, \$5000.00, \$5050.00, \$5100.00, \$5150.00, \$5200.00, \$5250.00, \$5300.00, \$5350.00, \$5400.00, \$5450.00, \$5500.00, \$5550.00, \$5600.00, \$5650.00, \$5700.00, \$5750.00, \$5800.00, \$5850.00, \$5900.00, \$5950.00, \$6000.00, \$6050.00, \$6100.00, \$6150.00, \$6200.00, \$6250.00, \$6300.00, \$6350.00, \$6400.00, \$6450.00, \$6500.00, \$6550.00, \$6600.00, \$6650.00, \$6700.00, \$6750.00, \$6800.00, \$6850.00, \$6900.00, \$6950.00, \$7000.00, \$7050.00, \$7100.00, \$7150.00, \$7200.00, \$7250.00, \$7300.00, \$7350.00, \$7400.00, \$7450.00, \$7500.00, \$7550.00, \$7600.00, \$7650.00, \$7700.00, \$7750.00, \$7800.00, \$7850.00, \$7900.00, \$7950.00, \$8000.00, \$8050.00, \$8100.00, \$8150.00, \$8200.00, \$8250.00, \$8300.00, \$8350.00, \$8400.00, \$8450.00, \$8500.00, \$8550.00, \$8600.00, \$8650.00, \$8700.00, \$8750.00, \$8800.00, \$8850.00, \$8900.00, \$8950.00, \$9000.00, \$9050.00, \$9100.00, \$9150.00, \$9200.00, \$9250.00, \$9300.00, \$9350.00, \$9400.00, \$9450.00, \$9500.00, \$9550.00, \$9600.00, \$9650.00, \$9700.00, \$9750.00, \$9800.00, \$9850.00, \$9900.00, \$9950.00, \$10000.00, \$10050.00, \$10100.00, \$10150.00, \$10200.00, \$10250.00, \$10300.00, \$10350.00, \$10400.00, \$10450.00, \$10500.00, \$10550.00, \$10600.00, \$10650.00, \$10700.00, \$10750.00, \$10800.00, \$10850.00, \$10900.00, \$10950.00, \$11000.00, \$11050.00, \$11100.00, \$11150.00, \$11200.00, \$11250.00, \$11300.00, \$11350.00, \$11400.00, \$11450.00, \$11500.00, \$11550.00, \$11600.00, \$11650.00, \$11700.00, \$11750.00, \$11800.00, \$11850.00, \$11900.00, \$11950.00, \$12000.00, \$12050.00, \$12100.00, \$12150.00, \$12200.00, \$12250.00, \$12300.00, \$12350.00, \$12400.00, \$12450.00, \$12500.00, \$12550.00, \$12600.00, \$12650.00, \$12700.00, \$12750.00, \$12800.00, \$12850.00, \$12900.00, \$12950.00, \$13000.00, \$13050.00, \$13100.00, \$13150.00, \$13200.00, \$13250.00, \$13300.00, \$13350.00, \$13400.00, \$13450.00, \$13500.00, \$13550.00, \$13600.00, \$13650.00, \$13700.00, \$13750.00, \$13800.00, \$13850.00, \$13900.00, \$13950.00, \$14000.00, \$14050.00, \$14100.00, \$14150.00, \$14200.00, \$14250.00, \$14300.00, \$14350.00, \$14400.00, \$14450.00, \$14500.00, \$14550.00, \$14600.00, \$14650.00, \$14700.00, \$14750.00, \$14800.00, \$14850.00, \$14900.00, \$14950.00, \$15000.00, \$15050.00, \$15100.00, \$15150.00, \$15200.00, \$15250.00, \$15300.00, \$15350.00, \$15400.00, \$15450.00, \$15500.00, \$15550.00, \$15600.00, \$15650.00, \$15700.00, \$15750.00, \$15800.00, \$15850.00, \$15900.00, \$15950.00, \$16000.00, \$16050.00, \$16100.00, \$16150.00, \$16200.00, \$16250.00, \$16300.00, \$16350.00, \$16400.00, \$16450.00, \$16500.00, \$16550.00, \$16600.00, \$16650.00, \$16700.00, \$16750.00, \$16800.00, \$16850.00, \$16900.00, \$16950.00, \$17000.00, \$17050.00, \$17100.00, \$17150.00, \$17200.00, \$17250.00, \$17300.00, \$17350.00, \$17400.00, \$17450.00, \$17500.00, \$17550.00, \$17600.00, \$17650.00, \$17700.00, \$17750.00, \$17800.00, \$17850.00, \$17900.00, \$17950.00, \$18000.00, \$18050.00, \$18100.00, \$18150.00, \$18200.00, \$18250.00, \$18300.00, \$18350.00, \$18400.00, \$18450.00, \$18500.00, \$18550.00, \$18600.00, \$18650.00, \$18700.00, \$18750.00, \$18800.00, \$18850.00, \$18900.00, \$18950.00, \$19000.00, \$19050.00, \$19100.00, \$19150.00, \$19200.00, \$19250.00, \$19300.00, \$19350.00, \$19400.00, \$19450.00, \$19500.00, \$19550.00, \$19600.00, \$19650.00, \$19700.00, \$19750.00, \$19800.00, \$19850.00, \$19900.00, \$19950.00, \$20000.00, \$20050.00, \$20100.00, \$20150.00, \$20200.00, \$20250.00, \$20300.00, \$20350.00, \$20400.00, \$20450.00, \$20500.00, \$20550.00, \$20600.00, \$20650.00, \$20700.00, \$20750.00, \$20800.00, \$20850.00, \$20900.00, \$20950.00, \$21000.00, \$21050.00, \$21100.00, \$21150.00, \$21200.00, \$21250.00, \$21300.00, \$21350.00, \$21400.00, \$21450.00, \$21500.00, \$21550.00, \$21600.00, \$21650.00, \$21700.00, \$21750.00, \$21800.00, \$21850.00, \$21900.00, \$21950.00, \$22000.00, \$22050.00, \$22100.00, \$22150.00, \$22200.00, \$22250.00, \$22300.00, \$22350.00, \$22400.00, \$22450.00, \$22500.00, \$22550.00, \$22600.00, \$22650.00, \$22700.00, \$22750.00, \$22800.00, \$22850.00, \$22900.00, \$22950.00, \$23000.00, \$23050.00, \$23100.00, \$23150.00, \$23200.00, \$23250.00, \$23300.00, \$23350.00, \$23400.00, \$23450.00, \$23500.00, \$23550.00, \$23600.00, \$23650.00, \$23700.00, \$23750.00, \$23800.00, \$23850.00, \$23900.00, \$23950.00, \$24000.00, \$24050.00, \$24100.00, \$24150.00, \$24200.00, \$24250.00, \$24300.00, \$24350.00, \$24400.00, \$24450.00, \$24500.00, \$24550.00, \$24600.00, \$24650.00, \$24700.00, \$24750.00, \$24800.00, \$24850.00, \$24900.00, \$24950.00, \$25000.00, \$25050.00, \$25100.00, \$25150.00, \$25200.00, \$25250.00, \$25300.00, \$25350.00, \$25400.00, \$25450.00, \$25500.00, \$25550.00, \$25600.00, \$25650.00, \$25700.00, \$25750.00, \$25800.00, \$25850.00, \$25900.00, \$25950.00, \$26000.00, \$26050.00, \$26100.00, \$26150.00, \$26200.00, \$26250.00, \$26300.00, \$26350.00, \$26400.00, \$26450.00, \$26500.00, \$26550.00, \$26600.00, \$26650.00, \$26700.00, \$26750.00, \$26800.00, \$26850.00, \$26900.00, \$26950.00, \$27000.00, \$27050.00, \$27100.00, \$27150.00, \$27200.00, \$27250.00, \$27300.00, \$27350.00, \$27400.00, \$27450.00, \$27500.00, \$27550.00, \$27600.00, \$27650.00, \$27700.00, \$27750.00, \$27800.00, \$27850.00, \$27900.00, \$27950.00, \$28000.00, \$28050.00, \$28100.00, \$28150.00, \$28200.00, \$28250.00, \$28300.00, \$28350.00, \$28400.00, \$28450.00, \$28500.00, \$28550.00, \$28600.00, \$28650.00, \$28700.00, \$28750.00, \$28800.00, \$28850.00, \$28900.00, \$28950.00, \$29000.00, \$29050.00, \$29100.00, \$29150.00, \$29200.00, \$29250.00, \$29300.00, \$29350.00, \$29400.00, \$29450.00, \$29500.00, \$29550.00, \$29600.00, \$29650.00, \$29700.00, \$29750.00, \$29800.00, \$29850.00, \$29900.00, \$29950.00, \$30000.00, \$30050.00, \$30100.00, \$30150.00, \$30200.00, \$30250.00, \$30300.00, \$30350.00, \$30400.00, \$30450.00, \$30500.00, \$30550.00, \$30600.00, \$30650.00, \$30700.00, \$30750.00, \$30800.00, \$30850.00, \$30900.00, \$30950.00, \$31000.00, \$31050.00, \$31100.00, \$31150.00, \$31200.00, \$31250.00, \$31300.00, \$31350.00, \$31400.00, \$31450.00, \$31500.00, \$31550.00, \$31600.00, \$31650.00, \$31700.00, \$31750.00, \$31800.00, \$31850.00, \$31900.00, \$31950.00, \$32000.00, \$32050.00, \$32100.00, \$32150.00, \$32200.00, \$32250.00, \$32300.00, \$32350.00, \$32400.00, \$32450.00, \$32500.00, \$32550.00, \$32600.00, \$32650.00, \$32700.00, \$32750.00, \$32800.00, \$32850.00, \$32900.00, \$32950.00, \$33000.00, \$33050.00, \$33100.00, \$33150.00, \$33200.00, \$33250.00, \$33300.00, \$33350.00, \$33400.00, \$33450.00, \$33500.00, \$33550.00, \$33600.00, \$33650.00, \$33700.00, \$33750.00, \$33800.00, \$33850.00, \$33900.00, \$33950.00, \$34000.00, \$34050.00, \$34100.00, \$34150.00, \$34200.00, \$34250.00, \$34300.00, \$34350.00, \$34400.00, \$34450.00, \$34500.00, \$34550.00, \$34600.00, \$34650.00, \$34700.00, \$34750.00, \$34800.00, \$34850.00, \$34900.00, \$34950.00, \$35000.00, \$35050.00, \$35100.00, \$35150.00, \$35200.00, \$35250.00, \$35300.00, \$35350.00, \$35400.00, \$35450.00, \$35500.00, \$35550.00, \$35600.00, \$35650.00, \$35700.00, \$35750.00, \$35800.00, \$35850.00, \$35900.00, \$35950.00, \$36000.00, \$36050.00, \$36100.00, \$36150.00, \$36200.00, \$36250.00, \$36300.00, \$36350.00, \$36400.00, \$36450.00, \$36500.00, \$36550.00, \$36600.00, \$36650.00, \$36700.00, \$36750.00, \$36800.00, \$36850.00, \$36900.00, \$36950.00, \$37000.00, \$37050.00, \$37100.00, \$37150.00, \$37200.00, \$37250.00, \$37300.00, \$37350.00, \$37400.00, \$37450.00, \$37500.00, \$37550.00, \$37600.00, \$37650.00, \$37700.00, \$37750.00, \$37800.00, \$37850.00, \$37900.00, \$37950.00, \$38000.00, \$38050.00, \$38100.00, \$38150.00, \$38200.00, \$38250.00, \$38300.00, \$38350.00, \$38400.00, \$38450.00, \$38500.00, \$38550.00, \$38600.00, \$38650.00, \$38700.00, \$38750.00, \$38800.00, \$38850.00, \$38900.00, \$38950.00, \$39000.00, \$39050.00, \$39100.00, \$39150.00, \$39200.00, \$39250.00, \$39300.00, \$39350.00, \$39400.00, \$39450.00, \$39500.00, \$39550.00, \$39600.00, \$39650.00, \$39700.00, \$39750.00, \$39800.00, \$39850.00, \$39900.00, \$39950.00, \$40000.00, \$40050.00, \$40100.00, \$40150.00, \$40200.00, \$40250.00, \$40300.00, \$40350.00, \$40400.00, \$40450.00, \$40500.00, \$40550.00, \$40600.00, \$40650.00, \$40700.00, \$40750.00, \$40800.00, \$40850.00, \$40900.00, \$40950.00, \$41000.00, \$41050.00, \$41100.00, \$41150.00, \$41200.00, \$