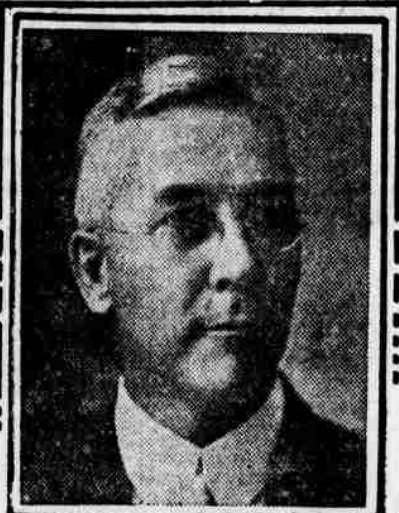


# 1920'S AR-BEN AK'S REAL ESTATE NUMBER



E.F. WILLIAMS SEC.



I. SHULER PRES.



C.D. GLOVER V.P.



L.D. SPALDING, TREAS.

OFFICERS OF THE  
**OMAHA**  
REAL ESTATE BOARD  
AND PUBLICITY COMMITTEE



A.T. ELMER.



W.R. McFARLAND



B.R. HASTINGS.



## REALTORS

AND  
Real Estate Firms Represented  
In This Section

SHULER & CARY  
SCHROEDER INV. CO.  
OSBORNE REALTY CO.  
MATTSON & SMAILS  
CREIGH SONS & CO.

FOWLER & McDONALD  
W. FARNAM SMITH CO.  
GALLAGHER & NELSON  
WORLD REALTY CO.  
HASTINGS & HEYDEN

C. C. BEAVERS  
J. J. MULVIHILL  
SLATER & CO.  
C. MARTIN  
BYRON REED  
PAYNE INV. CO.  
C. G. CARLBERG

E. F. WILLIAMS  
GEORGE & CO.  
WALSH-ELMER CO.  
GLOVER & SPAIN  
RASP BROTHERS  
D. V. SHOLES & CO.  
R. F. CLARY & CO.

OMAHA REAL ESTATE BOARD  
CALKINS, REAL ESTATE INV.  
BENSON & CARMICHAEL  
O'KEEFE REAL ESTATE CO.

W. FARNAM SMITH CO.