

THE DIXIE FLYER

\$1,700 f. o. b. Omaha, Neb.

The All Purpose Car

This car is a great favorite among those of the motoring fraternity who use a car rain or shine—in mud and in snow.

Dixie Flyer Models are built by men who take pride in the wearing qualities of their car.

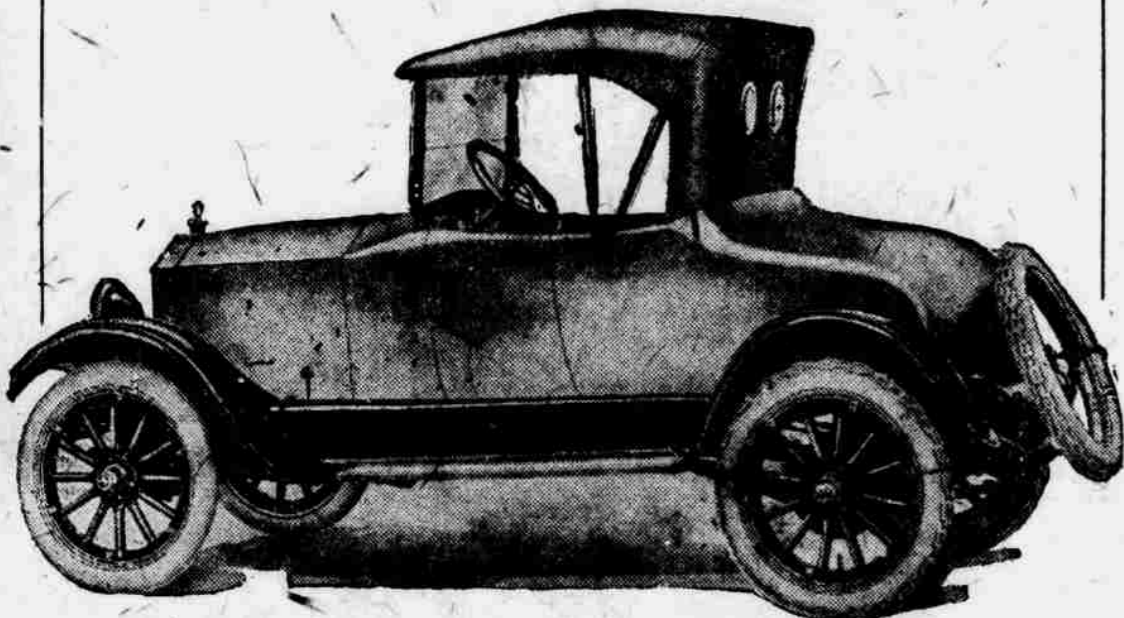
Try a Dixie Flyer on a hill or a rough road. You will soon understand what is meant by sturdiness.

W. R. Nichols Motor Co.

Distributors

2420 Farnam St.

Omaha, Neb.



Overland Sets Another Record In 1,000 Mile Run

Light Car Stands Test of Racing on Rough Brick Track at Indianapolis.

A new citation badge has been pinned on the famous Overland stock car that ran 5,452 miles over Indiana country roads early this year. The new citation is for a remarkable performance in a race against the hour hand of a clock on the hard riding Indianapolis speedway.

The Overland car after being used in road work for 2,000 miles, made its record of 5,452 miles in 168 hours continuous driving over frozen country roads, early in March. It then went back into service as a passenger car for road salesmen and then covered some 6,500 more miles. On top of this it was sent out at noon, August 24th, on the Indianapolis speedway in an effort to travel 1,000 miles before the hour hand of the clock could complete its cycle. The car not only ran 1,000 miles, but it did it in less than the 24 hours allotted.

Over Brick Course.
The Indianapolis speedway is considered one of the hardest race courses in the world. It is constructed of brick and few repairs have been made to the roadbed since it was laid 10 years ago. In that time the elements have roughened it and today the car that travels over it undergoes more racking vibration than would be received upon the ordinary country road.

The Overland, however, came through with flying colors. It was driven by four amateur drivers who took turn about, driving two hours each and then resting six. To cover the 1,000 miles it was necessary for the car to maintain a much higher average rate of speed than is ever exacted for any period of time from any car by the average car owner.

But with muffler open, the car responded nobly to the test. Throughout the daylight hours it sped around the great two and a half mile oval and when the evening hours came the speed was increased.

Proves Durability.
No more dramatic sight was ever witnessed on the scene of the world's most classic automobile contests than was the sight of the light car, guided by two spot-lights, roaring past the great empty stands which seemed to throw an even more intense blackness of shadow upon the night-shrouded-course. The car in this remarkable run proved that the stamina and stability which gave a hardhood necessary to negotiate 5,452 miles in 168 hours gave also that extreme flexibility of motor which permitted its power plant to hold the car to the high speed necessary to cover 1,000 miles in less than 24 hours.

It was an expression of the new

union of economy and stamina on the American highway. The run was observed by Secretary Scroggin of the Hoosier Motor club and other officials.

Sales of Electrics In Omaha Growing, Dealer Says
At last the electric is coming into its own in Omaha, according to Joe Elfred, manager of the Hanson-Tyler Auto company here. The upward trend of gasoline prices and general upkeep of gas cars is having an influence on a certain class of people who are able to use the electric in their various transportation problems.

According to Elfred, sale of electrics has increased month after month, even in spite of the adverse conditions which are confronting the automobile business today. Elfred further states that he expects his fall business on Milburns to exceed business done in the fall of 1919.

Briscoe Establishes New Record at Wisconsin Fair

The following telegram from J. Alex Sloan, manager of the races at the state fair, Milwaukee, Wis., to the Briscoe Motor corporation, indicates that the Briscoe is upholding its enviable record on the race track.

"Briscoe car won the world's championship match race and established a new record for the famous old Wisconsin State fair race course today, when Fred Horey piloted his little Briscoe machine into first place in both the time trials and the championship event. All records for attendance at the state fair were broken, and all speed records held by such stars as Oldfield, De Palma and others were beaten."

Dutton Company Joins With Elcar Auto Concern

Announcement was made last week to the effect that C. J. Dutton of the C. J. Dutton Automotive company had effected a consolidation of his company and the Elcar Auto company.

Mr. Dutton has been financially interested in the Elcar Auto company since it was started and this consolidation will mean that both companies will be operated under his guidance and will be known as the C. J. Dutton Automotive company.

The C. J. Dutton Automotive company will distribute the Kissel Kar, the Moon and the Elcar and will retain the location at 2056-58 Farnam street.

Coating Compound.

A satisfactory compound for coating both the inside and outside of tires is made by stirring five pounds of whitening into a quart of gasoline and after a thorough mixture has been obtained, adding a quart of rubber cement.

Movable Washstand.

One of the wire stools such as are commonly used at soda fountains makes the basis of an admirable movable washstand. The seat is cut out and a pot is placed here, in which may be kept kerosene or sal soda for washing small parts as they are removed from the car in overhauling or repair work.

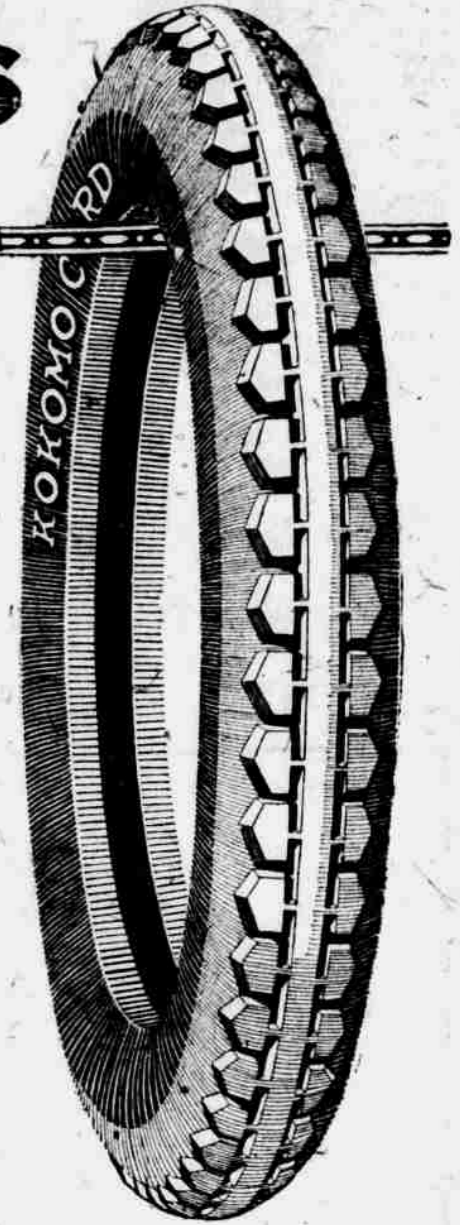
Clutch Trouble

A loose rear end bearing in many cars will permit oil to run back into the clutch housing, so that it must be drained out every two or three weeks. The remedy is obvious and it will be well to examine the oil retainer between the clutch and transmission, as part of the trouble may come from this.

Wringer for Washing.

An ordinary clothes wringer clamped to the cross piece of a wooden horse is very useful in a garage in connection with washing operations. The clothes used may be wrung out in an instant and dried thoroughly instead of being half dried by squeezing them in the hands.

LONG-LIFE KOKOMO CORDS



The Result of Experience

This Kokomo Cord is the attainment of a quarter century of tire building.

It is the attainment of a fine ideal in tire service, and tire appearance.

The tough white tread is exceedingly durable, yet yielding and springy. Its continuous center rib makes for easy steering while the double row of gripping wedges reduce slip or skid to the minimum.

Buy Kokomo Cords for supreme service.

KOKOMO RUBBER CO. OF NEBRASKA

2061 Farnam Street, Omaha, Nebraska

Raydex

The Legal and Safe Head Lens

Easily Installed on Any Car

Omaha, Nebraska, September 8th, 1920.

The Glassless, Glareless Lens for Automobile Headlights and Spotlights

TO THE USERS AND AGENCIES OF THE RAYDEX LENS:

I have tested a great number of Raydex lenses, which were put on the market by the Powell Supply Company.

The Raydex lens is the best lens that has ever been in the city of Omaha and complies with the state laws of Nebraska and the city ordinances of Omaha. There are other lenses on the market that will not pass either the city or state laws and the Raydex lens, if properly adjusted, will pass the law. If it is properly adjusted, it will throw a beam of light not over thirty-six (36) inches above the pavement seventy-five (75) feet distant. Other lenses that are being used will throw a great radius of light, but will not throw the light where it should be; nor do they comply with the law.

Any further reference in regard to these Raydex lenses may be obtained from the people who have installed them on their automobiles and who have a clearance slip issued by the police department of the city of Omaha.

(Signed) *Geo. Emery*
Sergeant Motor Cycle Detail

The writer of the above letter, Sergeant Emery, is considered one of the best authorities in the country on automobile headlights and kindred subjects, as he has had charge of this department for the Omaha Police Department.

The honeycomb metallic lens—the lens that projects a brilliant shaft of light—that gives ample side light—that gives more legal light than any glass lens can give. Practically unbreakable. The best light controlling lens ever offered. Legal everywhere. Easily installed—will outlast car. The shaft of the light, when Raydex lenses are properly installed, does not rise over 42 inches from the road 75 feet in front of the car.

Motorists

This is positively the best and safest lens ever put on the market. Have your dealer install a pair for you. If he hasn't them in stock, he can get them from us for you without any delay, as we have a complete stock of all sizes on hand. The retail price is \$4.00 per pair for any size.

To Dealers

Be sure to put in a stock of Raydex lenses. Five or six sizes will cover practically all the models and makes of cars in general use. We can fill your orders in a hurry for one pair or any large quantity you may want.

When you visit Omaha for Ak-Sar-Ben, or just on business, make Powell's your headquarters. "Right in the heart of automobile row," you will find this a most convenient location to transact your business from.

2051 Farnam St.

POWELL SUPPLY COMPANY
OMAHA

Phone Doug. 1003



The Motor of Monarchs and the Monarch of Motors

Their Majesties the King of England and the King of Spain use the Silent Knight Motor.

We mention this not as a tribute to Royalty, but as Royalty's tribute to quality!

They chose it because it is a motor that will not falter in the performance of its duty, and, perhaps, because it preserves the ancient tradition of flunkiness, by being eternally at beck and call!

The Knight Motor has no valves to grind, service but adds to its efficiency and power, and like a fine violin whose quality improves with age, the longer you use it the better it performs.

Rugged, Resourceful and Refined.



The Van Brunt Automobile Co.
Omaha, Neb. Council Bluffs, Ia.