

AMATEURS ADOPT MAJOR LEAGUE BETTING RULE

'Gambling Strictly Prohibited' Is Watchword of Municipal Amateur Base Ball Association.

Gambling strictly prohibited and on all amateur base ball games! That's the verdict of the Municipal Amateur Base Ball Association.

Officials of the association have followed the footsteps of the major and minor leagues prohibiting betting at any kind of amateur games.

Teams found guilty will draw an indefinite suspension and the spectators will be prosecuted. Gambling in any form will not be tolerated.

Officials will be on hand at all of the games this afternoon to enforce the rule and warn the players and managers against betting on results.

Considerable interest is being centered in the various amateur base ball contests on tap this afternoon in the City, American, Booster and Gate City leagues.

All teams are in great shape, having had plenty of practice during the last week.

Intense rivalry exists and scrappy contests from start to finish are anticipated. What should prove to be the stellar event in the City, class A league, is scheduled for Riverview park at 3:30 o'clock, between the Drive-It-Yourself Co., which has won two consecutive contests, and the Paxton-Vierlings, who are in a tie for second place.

Due to the fact that the Drive-It-Yourself have not lost a game thus far, the Ironworkers are anxious to pull 'em down a notch. Beers will leave them over the rubber for the Paxton-Vierlings, while Sel Smith, who was allowed last week to sit on the firing line for the Self-Drivers.

The Nebraska Power Co.-Union Outfitting Co. contest at Miller park should prove interesting as each team has been picked by many fans to cop the flag this season.

The Outfitters, who won the flag in the City league last season, have practically a new bunch this year.

Big Preliminary.
The preliminary contest at Riverview park between the Townsend, Gun company and the Harding Creamery company in the Booster league will also be of vast importance, since both teams are tied for first honors.

Art Klauschie will hurl for the Creamery lads, while either Joe Ort, southpaw, or B. Simpson will be on the firing line for the Gunners.

Fontenelle park will be the scene of a pair of interesting tangles when the Paulson's Fords and the Columbia-Optical company clash in the opener and the J. B. Roots and the Beddoes mix in the main event.

The Ramblers-Broedgaard Crown contest at Thirty-first and Ames avenue should prove the feature event in the Gate City league. These teams are tied for second honors and are out to get the other scalp.

How to Determine Valve When Buying New Battery
"How in the world can I tell which is the best battery? They all look alike and each manufacturer claims his is the best. So what's a fellow to do?"

This is the universal complaint of motorists faced with the necessity of buying a new battery and sums up a problem which is as vital as it is perplexing.

Of course, the average car owner cannot be expected to analyze the technical reasons advanced in support of the claims of any particular battery, any more than he can judge of a watch's time-keeping ability by looking at the works. But if he follows the same plan in selecting a storage battery that he uses in buying a watch he will obtain equally satisfactory results.

For in buying a watch or a storage battery, the only safe guide is the reputation of the maker and the experience of others who have used it. And in this respect it is well to bear in mind that the "Exide" starting and lighting battery is made by the world's largest maker of storage batteries for every purpose. The single fact that the "Exide" battery is the embodiment of more than 32 years' manufacturing experience is sufficient to guarantee that this battery is as good as human skill and unlimited resources can make it.

Heavy Entries for Big Ten Track and Field Meet
Chicago, May 15.—Heaviest entries in the history of the Big Ten track and field games are presaged for the meeting at Ann Arbor, June 4 and 5, and Warren D. Howe, secretary of the managing committee, expects the competition to be the keenest in years. Illinois is favored to win on the strength of its showing in dual meets.

Lou Dillon's Foal Promises to Be as Great a Racer as His Dam, Experts Say



Church Baseball League Schedule

Following is the Church Base Ball league schedule for the season of 1920. The league, consisting of eight teams, will close the season August 7, playing a two-round series. Managers are urged to clip this out for future reference.

May 8, June 26.
Thirty-first and Ames—Grace Lutheran against Pearl Kops. 1:30 p. m.; Immanuel Baptists against Ashbury M. E. 3:30 p. m.

May 15, July 3.
Thirty-first and Ames—Immanuel Baptists against First Memorial. 1:30 p. m.; Westminister Presbyterians against St. Marks Lutheran. 3:30 p. m.

May 22, July 10.
Thirty-first and Ames—Immanuel Baptists against First Memorial. 1:30 p. m.; Westminister Presbyterians against St. Marks Lutheran. 3:30 p. m.

May 29, July 17.
Thirty-first and Ames—Pearl Kops against First Memorial. 1:30 p. m.; Pearl Kops against Ashbury M. E. 3:30 p. m.

June 5, August 7.
Thirty-first and Ames—Pearl Kops against Ashbury M. E. 1:30 p. m.; Westminister Presbyterians against Immanuel Baptists. 3:30 p. m.

June 12, August 14.
Thirty-first and Ames—Pearl Kops against St. Marks Lutheran. 1:30 p. m.; Pearl Kops against Ashbury M. E. 3:30 p. m.

June 19, August 21.
Thirty-first and Ames—Westminister Presbyterians against First Memorial. 1:30 p. m.; Grace Lutheran against Immanuel Baptists. 3:30 p. m.

June 26, August 28.
Thirty-first and Ames—Pearl Kops against St. Marks Lutheran. 1:30 p. m.; Pearl Kops against Ashbury M. E. 3:30 p. m.

July 3, September 5.
Thirty-first and Ames—Westminister Presbyterians against First Memorial. 1:30 p. m.; Grace Lutheran against Immanuel Baptists. 3:30 p. m.

July 10, September 12.
Thirty-first and Ames—Pearl Kops against St. Marks Lutheran. 1:30 p. m.; Pearl Kops against Ashbury M. E. 3:30 p. m.

July 17, September 19.
Thirty-first and Ames—Westminister Presbyterians against First Memorial. 1:30 p. m.; Grace Lutheran against Immanuel Baptists. 3:30 p. m.

July 24, September 26.
Thirty-first and Ames—Pearl Kops against St. Marks Lutheran. 1:30 p. m.; Pearl Kops against Ashbury M. E. 3:30 p. m.

July 31, October 3.
Thirty-first and Ames—Westminister Presbyterians against First Memorial. 1:30 p. m.; Grace Lutheran against Immanuel Baptists. 3:30 p. m.

August 7, October 10.
Thirty-first and Ames—Pearl Kops against St. Marks Lutheran. 1:30 p. m.; Pearl Kops against Ashbury M. E. 3:30 p. m.

August 14, October 17.
Thirty-first and Ames—Westminister Presbyterians against First Memorial. 1:30 p. m.; Grace Lutheran against Immanuel Baptists. 3:30 p. m.

August 21, October 24.
Thirty-first and Ames—Pearl Kops against St. Marks Lutheran. 1:30 p. m.; Pearl Kops against Ashbury M. E. 3:30 p. m.

Where the Amateur Leagues Play Today

CITY (CLASS A) LEAGUE.
Biggest Optical Company against Bowen Furniture Company, 3:30 p. m.; Riverview Park—Drive It Yourself against Paxton-Vierlings, 5:30 p. m.; Miller Park—Nebraska Power Company against Union Outfitting Company, 3:30 p. m.

AMERICAN (CLASS B) LEAGUE.
Fonselle Park—Paulson Fords against Columbia Optical Company, 3:30 p. m.; J. B. Root against Beddoes, 5:30 p. m.; Elmwood Park (West Diamond)—Federal Reserve Bank against Easy Furniture Company, 3:30 p. m.

BOOSTER (CLASS B) LEAGUE.
Riverview Park—Townsend Gun Company against Harding Creamery Company, 3:30 p. m.; Miller Park—Omaha Printing Company against Phillip Hardware Store, 1:30 p. m.

GATE CITY (CLASS C) LEAGUE.
Thirty-first and Ames—Pearl Kops against First Memorial, 1:30 p. m.; Ashbury M. E. against First Memorial, 3:30 p. m.; Elmwood Park (West)—McKenny Dentists against Shamrocks, 1:30 p. m.; Thirty-second and Dewey—Yves-Duchal Pharmacy against Woodmen of the World, 3:30 p. m.

Two Major League Teams to Tour Orient Next Fall and Winter
Chicago, Ill., May 15.—Buck Weaver, White Sox infielder, will select the players and take full charge of the playing end of a trip to be made by two ball teams to the Orient and Honolulu next fall and winter, it was unofficially announced Saturday. Weaver will choose a manager for the National league team, who will pick his players, while Weaver will assemble the American league representatives.

The last trip made to the Orient by professional ball teams from this country was staged by the Giants and White Sox in 1913.

Builds Private Race Track.
Commander J. K. L. Ross, the leading money winner on the turf last year, has constructed a private race track in Howard county, Md., about two miles from the Laurel race track.

Pop Anson Favored For Job Vacated by Chairman Herrmann
Chicago, May 15.—Adrian Anson, the grand old man of base ball, is the compromise choice of the majority of big league ball magnates for the chairman of the national base ball commission, it became known today, and it is expected he will be named, ending a squabble that has been alive ever since the resignation of Herrmann.

Comfort of Cole Aero Car Attributed to Long Spring
The remarkable riding comfort of the Cole Aero-Eight models may be attributed largely to the extra long springs specially designed by Cole engineers for these cars.

To conform to the Aero-Eight design, these springs follow closely aerotype design and construction. They are so fitted to the chassis as to carry out a perfect balance—a balance that is likened to that of the aeroplane.

Both the front and rear springs are of the semi-elliptic type—a type noted for its resiliency and strength. The front springs are 39 inches long and the rear 57 inches. The width of the leaves is 2 1/4 inches.

Comfort of Cole Aero Car Attributed to Long Spring
The remarkable riding comfort of the Cole Aero-Eight models may be attributed largely to the extra long springs specially designed by Cole engineers for these cars.

To conform to the Aero-Eight design, these springs follow closely aerotype design and construction. They are so fitted to the chassis as to carry out a perfect balance—a balance that is likened to that of the aeroplane.

Both the front and rear springs are of the semi-elliptic type—a type noted for its resiliency and strength. The front springs are 39 inches long and the rear 57 inches. The width of the leaves is 2 1/4 inches.

Comfort of Cole Aero Car Attributed to Long Spring
The remarkable riding comfort of the Cole Aero-Eight models may be attributed largely to the extra long springs specially designed by Cole engineers for these cars.

To conform to the Aero-Eight design, these springs follow closely aerotype design and construction. They are so fitted to the chassis as to carry out a perfect balance—a balance that is likened to that of the aeroplane.

Both the front and rear springs are of the semi-elliptic type—a type noted for its resiliency and strength. The front springs are 39 inches long and the rear 57 inches. The width of the leaves is 2 1/4 inches.

RUTH STARTS FOR NEW HOME RUN RECORD

Bogart Leads Western League Hitters—Platte Is Best—Rourke Batsman, Average Is .342.

Chicago, Ill., May 15.—"Babe" Ruth's 1920 offensive toward a new home run record is in full bloom. The New York slugger-connected with a trio of homers in two days and has five circuit drives to his credit, according to averages completed today. The average includes games of Wednesday.

Johnson of Cleveland shot to the front among the American league batters with an average of .414 acquired in 20 games. The Cleveland first baseman connected with 29 hits for a total of 35 bases. Joe Jackson, of Chicago, is right behind Johnson with a marker of .397 compiled in the same number of games. Jackson, however, made 31 hits for a total of 45 bases, being at bat 78 times to his rival's 70.

Bobbie Roth of Washington is showing the way to the base stealers with nine thefts. Ty Cobb has not yet fully recovered from batting eye. In 21 games the Detroit star has made only 18 hits for an average of .243. Other leading batters: Kinney, Philadelphia, .381; Weaver, Chicago, .366; Felsch, Chicago, .362; Speaker, Cleveland, .342; Hendryx, Boston, .341; Gerber, St. Louis, .338; Gedeon, St. Louis, .337; Sisler, St. Louis, .333.

Nicholson Leads National.
Outfielder Nicholson of Pittsburgh has taken the lead among the National league batters. He is hitting .435 for 12 games, with Roger Hornsby, the St. Louis star, the runner-up with .414, one point in front of Leobourveau of Philadelphia. The averages include players who have participated in 10 or more games.

Max Flack, Chicago's lead-off man, is the leading run batter. He has registered 17 times, and has been on base an average of twice a game, but the members following him have not been able to deliver the necessary punch to put him across the plate with anything like consistency.

Williams of Philadelphia and Robertson of Chicago are tied for home run honors. Each has whacked out three round trips.

Rousch of Cincinnati, who has recovered his batting eye, and is up among the leaders this week, is on a triple tie for stolen base honors with his team mate, Neale, and Stock of St. Louis. Each has pilfered five bases. Other leading batters: Groh, Cincinnati, .371; Burns, New York, .355; Z. Wheat, Brooklyn, .354; Dabbert, Cincinnati, .333; Flack, Chicago, .321; Rousch, Cincinnati, .321; Myers, Brooklyn, .319.

Bogart Leads Western.
Bogart of Joplin is the new batting leader of the Western league. He has an average of .435 made in 18 games. Kelleher of St. Joseph has taken the lead in base stealing, having eight thefts to his credit. Other leading batters for 12 or more games: Reichs, Sioux City, .425; Dnnn, Joplin, .405; Pitt, Oklahoma City, .400; Yaryan, Wichita, .397; Bonowitz, St. Joseph, .395; Butler, Wichita, .373; Krueger, Joplin, .364; Crosby, St. Joseph, .356; Platte, Omaha, .342.

Give Driscoll Praise.
Jim Driscoll was recently presented with a purse of \$8,500 by English admirers. The English pugilist lost recently to Ledoux and has retired.

Manager Otto Williams and his Armour base ball club will journey to Shenandoah, Ia., this afternoon, where they will lock horns with the town boys. Either Andy Graves or Art Dyke will receive for the sent post.

The Gudahy Purians will clash with Herman, today.

Kansas Farmer Overcomes Paralysis As Wrestling Star

Junction City Boy Stricken With Paralysis Takes Up Mat Game and Not Only Restores His Health But Becomes Famous in Wrestling Game.

Junction City, Kan., May 15.—Fourteen years ago a Kansas farm lad, suffering from partial paralysis, picked up a magazine devoted to athletics and saw a group of pictures illustrating wrestling holds. He became interested, read the article accompanying the pictures, and resolved to become a wrestler. The paralysis had rendered his right side partially useless, the thigh being shrunken until it was smaller than the calf. Nevertheless he began to practice the various wrestling holds on playmates. Two years later, his paralysis completely cured, he wrestled his first professional match, and in 1910, at the age of 18, he won the heavyweight championship of Kansas, defeating the then title holder, A. A. Britt of Luray.

Since that time, wrestling only during the idle seasons on his farm, and without the services of a press agent or manager, he has worked his way up until he is one of the top-notchers in the wrestling game. The man is Alan Eustace of Wakefield, Kan., who, during the last winter, wrestling under the auspices of the American Legion at the Junction City Community house, has met and defeated such wrestlers as Ivan Linow, Jess Wetegard, Paul Martensen, Orlando and Salvatore Chevalier.

Known to Pro Grapplers.
Unlike the average professional athlete, Eustace is reticent regarding his wrestling career. He is better known in Chicago, Canton, O., and on the Pacific coast than in Kansas. But the "big time" wrestlers who were imported to meet Eustace here during the last season laughed when told that they were to encounter a Kansas farmer.

"You can't put anything over on us," they invariably replied. "We've known of Eustace for years. Every wrestling fan in and around Chicago knows of him."

Works a Quarter Section.
His farm is the most important thing with Eustace, and his wrestling matches are merely his side issue. He cultivates a 160 acre tract near Wakefield and says that the farm work keeps him in condition for matches. He is six feet two inches tall, weighs 220 pounds, and is 28 years of age.

Overspeeding of Truck Lessens Its Normal Life
Overspeeding is not only dangerous to others, but like overloading, is a factor which greatly lessens the normal life of your truck. Most trucks are equipped with governors to prevent excessive driving speeds. It is just as essential to keep down the speed in coasting.

A heavy truck in motion represents a tremendous amount of energy whose destructiveness increases at a much greater ratio than the increase in speed. It therefore requires much more effort to control and it can do untold damage should it get beyond the driver's control.

Excessive speed causes excessive wear. The driving shafts are designed to run at certain speeds beyond their critical or bending speeds. Whipping of drive shafts does not tend to increase gradually, but is almost instantaneous in its action, once the critical speed is reached. Much damage, not only to itself, but to surrounding parts, may be the result of a shaft whipping out of its proper position. The engine fly-wheel and clutch parts may also be damaged beyond repair should they run at excessive speed.

Truck tires, particularly the usual solid type, are rapidly destroyed by abnormal speeds. It is here that the cost of overspeeding is most quickly felt by the truck owner.

In fairness to yourself and to other users of the highways do not tamper with the governor on your truck and do not permit of driving beyond a rational speed if your truck is not so equipped.

Have Jap Coach.
Kogiro Haneishi, a Japanese jiu jitsu expert, is a member of the University of Illinois athletic coaching school staff.

Crowd of 127,307 Attend Soccer Games in England
The great crowds drawn by various football games by prominent college elevens recall the popularity of the soccer game in Great Britain. The best record of record was drawn for the English cup final of 1913 when a total of 120,028 attended the contest in London. The record attendance for a league match is the game between Chelsea and Newcastle United at Stamford Bridge, London, on December 27, 1909, when the rush of the turnstiles prevented an accurate count, but the estimated attendance was 66,000. The international match between Scotland and England at Hampden park, Glasgow, March 28, 1912, drew 127,307, a record never surpassed.

Whisky and quinine used to be good for a cold. Now a cold is good for whisky and quinine.

Save 65%

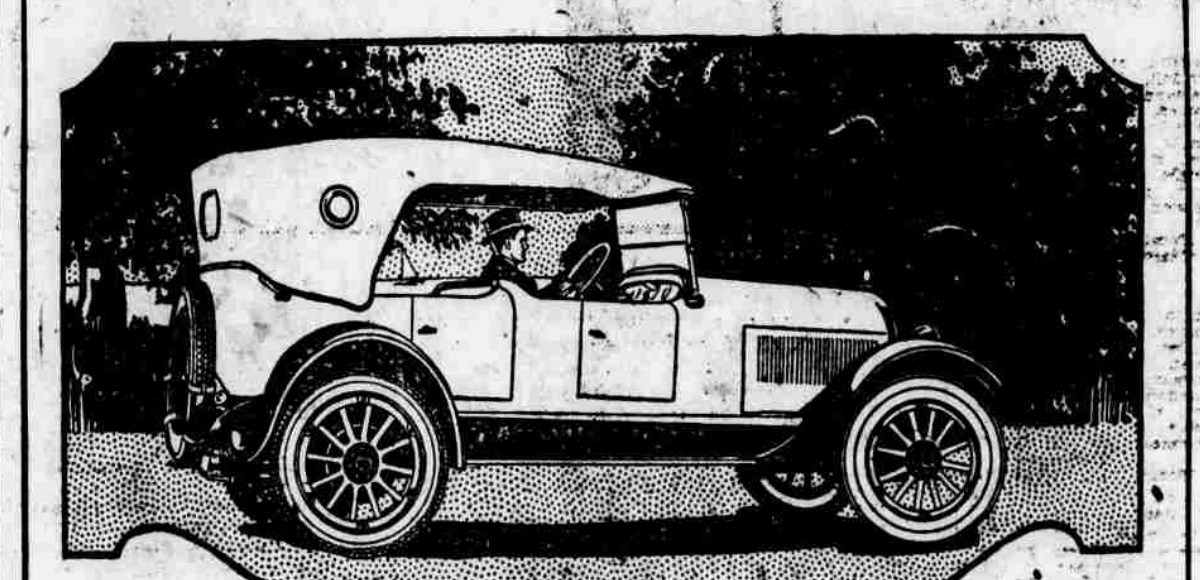
The genuine satisfaction Durable Tires have given car owners year after year is responsible for this year's enormous demand. Durable Tires are reconstructed tires, reinforced with four extra layers of stouter fabric. Every tire is entirely wrapped and protected. GUARANTEED 5,000 MILES. Written guarantee enclosed with every tire.

Size	Tire	Tube	Size	Tire	Tube		
30x3	\$6.50	\$2.00	34x4	9.25	\$2.60
30x3 1/2	6.50	2.10	34x4 1/2	10.75	2.80
32x3 1/2	7.50	2.30	35x4 1/2	11.00	2.90
34x4	8.50	2.40	35x4 3/4	11.50	3.00
32x4	8.75	2.45	35x4 3/8	12.25	3.20
33x4	9.00	2.50	37x5	12.75	3.30

RELINER FREE WITH EVERY TIRE

State whether you want straight side or clincher, plain or non-skid. Send \$2.00 deposit for each tire ordered. \$1.00 for each tube, balance C. O. D. Subject to examination, or 5% per cent discount if full amount is sent with order.

DURABLE TIRE & RUBBER CO.
2429 W. Chicago Ave., Dept. 28 Chicago, Ill.



STEPHENS Salient Six

Public Preference Grows for Greater Value—Greater Service

It is what the Stephens is and does and gives that is winning a fast growing preference for this car everywhere.

For the Stephens is a motor car of greater value and does give a greater service.

There is a universal preference for hand-built bodies.

Stephens bodies are hand-built with the same care and workmanship that is given to fine custom built bodies.

There is also a nationwide demand for a modern fuel-burning engine of greater power and increased economy.

The modern Stephens engine burns low and high grade gasoline with like efficiency and success.

It is also the most powerful and the most economical engine for its size found in passenger automobiles.

Preference for the Stephens is based upon motor-wise recognition of its greater value and its greater service.

And Stephens owners agree that, "To own a Stephens is to enjoy the height of motor car satisfaction."

Arrange for a demonstration today.

"That is salient which is strikingly manifest or which catches the attention at once."
—WEBSTER.

Mid-City Motor and Supply Co.
Distributors
Telephone Tyler 2462 2216-18 Farnam St. Omaha

A GREATER VALUE A GREATER SERVICE

Manufactured by Stephens Motor Works of Moline Plow Company

TIRE SERVICE and Repairing

19th & Harney Sts. Across from Grain Exchange

TIRES MACK TIRE & SERVICE CO. REPAIRED

A—Reel or Wire Cable
B—Insulating Machine
C—Bead Form

The Bead is the anchor of the tire. It holds to the rim. Interior beads have caused fatal accidents. Stronghold beads are scientifically built up—not just thrown together.

"Give 'em Air and Watch 'em Wear"

Here Are 5 Reasons Why Stronghold TIRES & TUBES Give You More Mileage

- 1 THE STRONGHOLD TREAD is thicker than many. Tougher, more resilient.
- 2 THE STRONGHOLD BREAKER STRIP is heavy fabric impregnated with pure gum. Cushions the carcass against road shocks and prevents fabric breaks.
- 3 THE STRONGHOLD SIDEWALL is especially prepared to withstand abrasion, rut wear, etc.
- 4 THE STRONGHOLD BEAD is a highly exclusive feature. Each steel bead is separately insulated.
- 5 THE STRONGHOLD FABRIC PLYS are heavily "frictioned" (impregnated) with pure gum. This insures a tire full of BOUNCE and "comeback" qualities.

VICTOR H. ROOS
2701-03-05-07 Leavenworth St. Omaha, Neb.