

THE BEE'S HOME BUILDER'S PAGE

COST OF LIVING PROVES PROBLEM TO GREAT BRITAIN

Member of Parliament Says Economic Questions Are Paramount Issues in Country Now.

By C. A. McCURDY, M. P.
Written for International News Service.
London, May 1.—Practical politics in England will largely turn on economic questions for the next five years. Prices, wages, profits and the high cost of living are the live political issues which will determine the fate of governments.

Five years' wastage of war, five years of unparalleled destruction of wealth and dislocation of industry cannot be repaired as soon as peace comes.

It is not the inflation of the currency nor the lack of transport that is the root cause of the high prices of today, but the simple fact that in every necessity of civilized life the productive efficiency of the world has still to be restored, and the wastage of war has still to be made good.

Two immediate remedies have been proposed, and are continually being urged upon the people of this country. I believe that both are unsound.

First, there is the remedy proposed by the extremists of the labor party—that we should check excessive profits altogether; that we should nationalize the industries of the country in the hope that out of that tremendous experiment a satisfactory result might be obtained.

At the other extreme are the people who urge that the old doctrine of freedom of trade, freedom of competition, the complete removal of all restrictions and controls, is the sound economic method of lowering prices.

The true remedy will be found somewhere between the extremes advocated by the labor party on the one hand, and the great trading interests on the other. We shall not nationalize our industries and so destroy the commercial system upon which our wealth and prosperity have grown for centuries. Nor can it be necessary, on the other hand, that the trusts and combines and the profiteers should be given a free hand to exploit the public as they please.

A safe middle path of safety and wisdom must be found. There must be some form of supervision and control exercised over prices and profits in the interests of the consumer.

It is not, in my judgment, to fines or prosecutions that we must look for salvation.

We must encourage, and, if necessary, compel the trades which have shown us their power to control and restrict prices to exercise that power for the benefit of the public and not merely in their own selfish interests.

Rape As Pasture Crop

By FRANK RIDGWAY.

The increase in the production of grain during the last few years, resulting in the plowing up of grass land, has caused a shortage of pasture on many farms in the corn belt states. To save grain, farmers will find rape a valuable emergency crop. Those who have tried it find it an exceedingly valuable pasture crop, because it makes a luxuriant growth in a comparatively short period of time, and it furnishes a succulent forage which animals relish during the summer, when permanent pastures are short.

Rape is too watery in character to be made into hay or silage, but for grazing purposes it is valuable for sheep and hogs especially, and it is good for cattle. It is sometimes objected to as a pasture for milch cows because it taints the milk. Dairy men claim this can be avoided by not allowing the cows to graze on rape during the last few hours before milking. Graze them immediately after milking. Cattle also damage a great many leaves with their large hoofs.

Rape is closely related to the cabbage and turnip plants. Its leaves resemble the cabbage, but there is no head formed.

It is best not to pasture rape until it is about 10 inches high. It is usually ready to be grazed by the last of May. It continues to grow until freezing weather, remaining green and succulent, and produces new growth throughout the season. Its rapid growth may be checked slightly in the hot, dry weather in late summer.

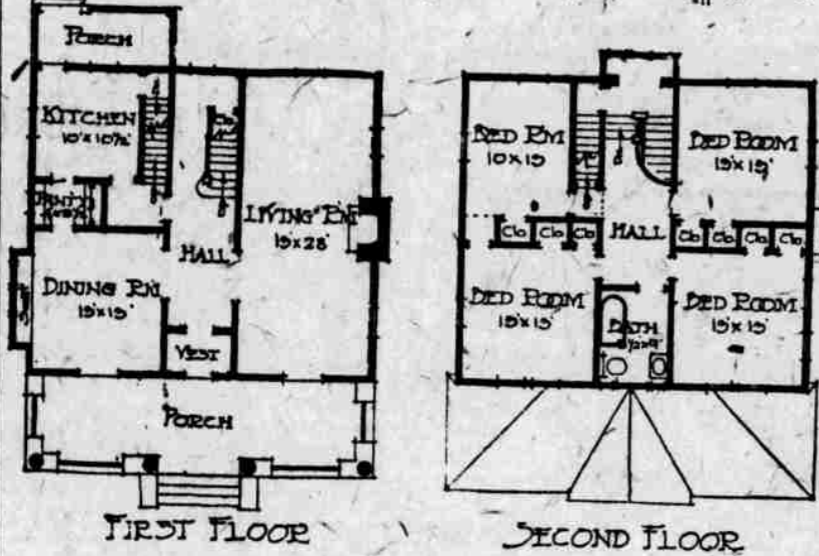
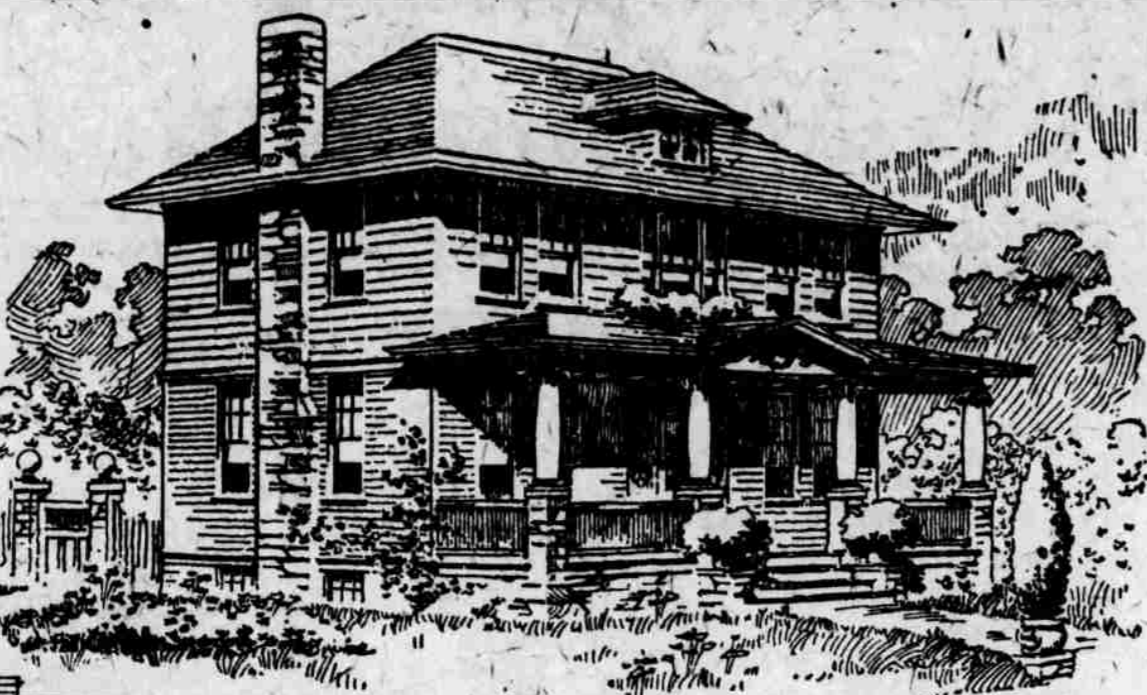
If rape is given a good start before live stock are turned in, it will furnish sufficient grazing for from 15 to 20 animals on each acre, from June until October, depending on whether it is sown alone or with other crops. It may be raised alone or with a variety of other crops.

The method most commonly employed in pasturing rape is to have two or three lots; or, if it is in a field fences may be built dividing the field into small patches. In this way close pasturing may be avoided by changing the animals from one pasture or lot to another at intervals of about two weeks, and thus the rape will be given a chance to get a new start.

Old Barkentine Used to Film Jack London Novel

San Francisco, May 1.—After 40 years' sailing of the high seas with never a layup except for repairs, the barkentine, Mary Winkleman, has cast aside the strenuous duties of cargo carrying for a bit of historic exposition. With a "crew" of movie actors and actresses the old bark was sailed on a 10-day cruise on which the sea scenes of Jack London's novel, "The Mystery of the Elsinore," will be filmed. The Mary Winkleman is believed to be the oldest boat in active service on the Pacific coast.

A Handsome Home



The design shows a plain, substantial cottage of good style and fine floor plans. The vestibule entrance opens into a hall extending the length of the house. The large, bright living room, with open fireplace, is a feature of the house. Dining room, pantry and kitchen are very well grouped. Four bedrooms, bath room and the maximum number of closets complete the second floor. — Clyde Smith Adams, Architect.

THOMAS DURKIN
Electric Light and Power Contractor
Lighting Fixtures, Washing Machines, Irons and Toasters, Etc.
2223 Cuming St.
Telephone Douglas 2519.

BENSON-OMAHA NURSERIES
P. J. FLYNN, Prop.
Phone Walnut 4278
Corner 65th and Spencer

Anchor Fence Co.
207 No. 17th St. Douglas 6799.

Plan Exclusive Resort For Wealthy Aborigines
Colorado Springs, Col., May 1.—L. B. the Red Man is weary of stuffy hotel rooms while enjoying a summer's outing in the shadow of Pike's Peak, and in response to many requests, local authorities have set aside a plot around Austin's Bluff, near here, which hundreds of Osage Indians, become wealthy from development of their Oklahoma oil lands, will have for their exclusive use the coming season.

Trees—Shrubs—Landscapes
We are pleased to announce to our patrons that we have a complete stock of quality fruit and shade trees, shrubs and ornamentals. Our guarantee goes with every order. Call and inspect our stock—or phone and we will call and plan your landscape shrub planting.

Complete Plans to Operate K. of C. Employment Bureau
Plans for the operation of the Knights of Columbus employment bureau in connection with the free vocational night school maintained by the order were completed yesterday.

Several applications from employers for men are on file, and two students were placed yesterday. Students in all departments have been classified and will be given the training they desire and helped in securing positions.

Hugh F. Gillespie, director of the school at Creighton university, has charge of the employment feature also.

To Erect Houses.
Joseph Cohn, president of the Omaha Wholesale Paper & Notion Co., purchased a tract of land at the southwest corner of Thirty-sixth and Davenport streets from William J. Hynes last week. He plans to erect houses on the property. The deal was made through the O'Keefe Real Estate company.

AWNINGS
See our Special Awning Patterns and get our prices before ordering elsewhere. Ideas and estimates furnished without cost.
Nebraska Tent & Awning Co.
H. S. McDonald, Mgr.
1204 Farnam St.

EMPIRE GARAGES
Floor and glass extra. All stained and painted. Can be set up in a few hours.
\$125 AND UP
10x12 \$125.00
10x14 134.00
10x18 153.00
10x20 160.00
12x14 180.00
12x18 170.00
12x20 178.00
20x20 298.00
Send for Circular
Redi-Made Housing Co.
2211 Howard, Omaha, Doug. 3687.

Have You a Building Problem?
If So, Let Us Work With You to Its Proper Solution
HOME BUILDERS SERVICE METHODS for the construction of all kinds of buildings solves most building problems.
See Construction Department
Home Builders
INCORPORATED
W. BOYD JONES, Mgr.
N. W. Cor. 18th and Dodge Streets, Omaha
Authorized Capital \$1,500,000
If Desired, We Finance Buildings When Constructed by Us

Wall Paper and Paint Sale
Now Is the Time to Beat the High Cost of Papering and Painting by Coming to This Sale.
Inside Floor Paint, gal. \$3.50
Varnish Stains, qt. 80c
Varnish Stains, pt. 45c
Auto and Wagon Paint, qt. \$1.35
Floor Wax, 1-lb. can. 65c
Vernis Martin Gilding Outfits 95c
Outside White, gal. \$4.40
All Other Colors, gal. \$4.25
Flat Wall Paint, gal. \$3.45
Weatherproof White, \$3.95
O. L. WIEMER
Wall Paper—Paints.
Glass Painting and Decorating.
Full Stock of Sunlight Paints.
2302 CUMING ST.
DOUGLAS 8753.

Good Fences Make Good Neighbors
Wire and Iron Fences
Gates for Lawns
Wire Flower Bed Borders
Garden and Poultry Yards
Clothes Posts, Iron and Wire
Window Guards
Screen Door Guards
Wire Arches
Tree and Flower Guards
CHAMPION IRON & WIRE WORKS
18th and Jackson Sts. J. J. LEDDY, Prop. Tel. Douglas 1800.

The Wife Saving Station
BLUE BIRD ELECTRIC SHOP
Let the "Blue Bird" wire your house.
308 North 16th Street
Tyler 5050 Omaha, Neb.
Why have Omaha homes purchased two carloads of "White Lily" Washing Machines this year?

The Hoover Campaign and What We Think of It

Having implicit faith in the merits of The Hoover and with full knowledge of its value-giving service, E. B. Williams has placed his 1921 order for hundreds and hundreds of Hoover Electric Sweepers. Many Omaha housewives have purchased their Hoovers from Williams in the past year; hundreds of them have been saved from the drudgery of household trials; hundreds more will be saved this year.

There Are Plenty of Electric Sweepers For Sale, but the Supply of Hoovers Is Limited

We congratulate ourselves in being able to secure these Hoovers and we feel it our duty to put this story before the housewives of Omaha—we believe they share the same feeling with us.

This is Hoover campaign week.

Ask About Our Special Campaign Terms and Our Economical Payment Plan.

E. B. Williams
312 So. 18th St. Tyler 1011

WHY DOES THE "VACUUM" Pipeless Furnace

(Trademark Reg. U. S. Patent Office)

Lead All Others in Sales in Omaha and the Middle West States?

1st—Because it is one of the finest and best built heating plants on the market today. All castings are extremely heavy and made from the highest quality new gray iron. Large feed doors—deep combustion chamber—double strength, extra service triangular grate bars—roomy ash pit—radiator of the return flue type to get the best results from soft coal and low grade fuels—finest quality heavy casings, the inner casing being triple and insulated. Every part of the Vacuum Furnace has quality written all over it. Built to last a lifetime, and absolutely guaranteed.

2nd—Because the price is right, and when we say this, it means a lot in these strenuous times. Compare the price of the Vacuum with any other furnace—you will be agreeably surprised. You owe it to yourself to do this before purchasing a heating plant—then compare the quality of the Vacuum piece by piece with any other plant selling for from \$100.00 to \$150.00 higher. You'll find the Vacuum equal, if not superior in every feature.

OUR PAST RECORD SPEAKS FOR ITSELF
Over 700 VACUUM FURNACES in Use in Omaha
Over 20,000 Sold in the Middle West States

For nine years the Vacuum has shown the way to competition. It embodies many patented improvements and features, the result of our long experience with this type of heating plant exclusively.

Drop in at our display room, 1112 Douglas street, talk over with us your heating problem. It will not obligate you, and this is the season of the year to investigate what a saving you can make. We are out of the high rent district and handling large quantities—two additional reasons why our proposition will interest you. Call, phone or write for catalogs, descriptive literature and information as to prices, etc.

VERY LIBERAL TERMS IF YOU WISH.

Vacuum Furnace Sales Co., 1112 Douglas St.
Phone Douglas 993. Omaha, Neb.