

FLINT GROWS AS FAST AS BUICK AUTO FACTORY

Makes Village Into Third Largest City in The State of Michigan.

Back in the earlier days when Flint was a village of 1,500, with an area of 60 acres, it was merely an Indian trading point, and the inhabitants those days "trapped," swopped horses and bargained with the big chiefs and their squaws.

In 1905 when the Buick factory built its first buildings there, Flint grew rapidly to what was considered a wonderful population of some 12,000. During the next five years Buick business expanded to such a degree that when the census of 1910 was recorded it showed a population of 38,550.

Under the new census returns Flint advances from the sixth city in Michigan, with a population of 38,550 in 1910, to third place with a population of 91,599.

Added to these figures during the past few days are the recent annexations to this city, which will give Flint a present population exceeding 100,000, or nearly 145 per cent increase.

There are few cities in America that enjoys the distinction of having such a world-wide reputation, for upon both hemispheres it has become known as the home of the famous Valve-In-the-Head Buick car.

Racing This Year to Bring Lighter Cars Into the Limelight

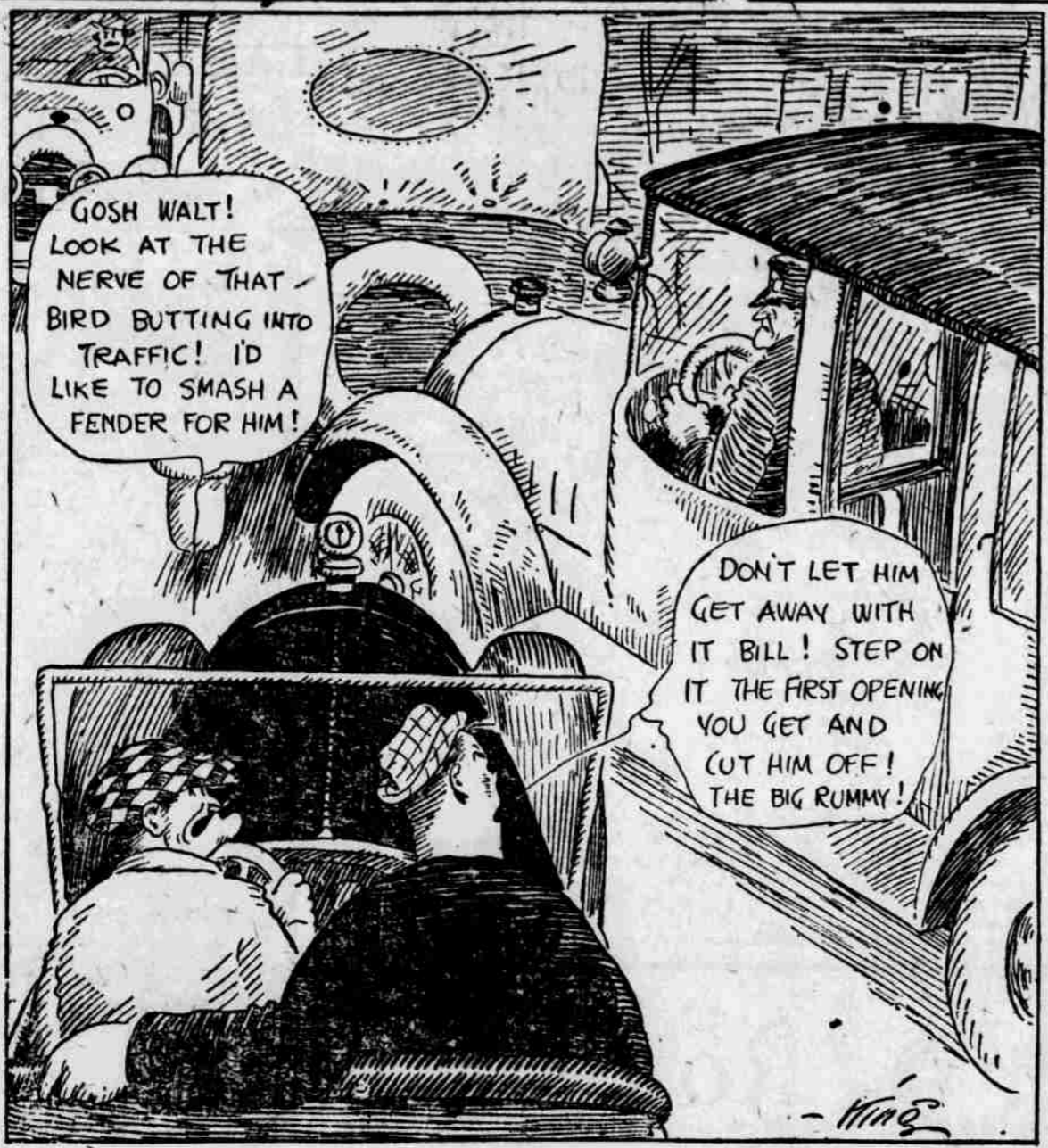
The struggle for supremacy to be waged this year on the roadways between European and American cars and drivers is of more interest than ever before to the motoring world because it forecasts a new era of automobile design. This was indicated at the Indianapolis speedway last year when a Baby Peugeot showed its heels to cars of almost twice its size thus proving that brute size is not essential to performance.

As a result, the Indianapolis speedway this year has reduced the limit on the size of motors from 300 inches to 183 inches cubic displacement. This means lighter and smaller cars than ever before and therefore more economical cars.

The displacement of the Essex is only 179 inches so it comes well within the Indianapolis limits. This together with the remarkable endurance it has displayed, may result in its entry in some of the big speedway events by individuals, but it is not believed that the Essex factory will take any active part in speed contests this year.

Push Rods.
The proper time to examine push rods is when the engine is still hot after a run. If these parts are adjusted when the metal is cold it may be well that because of expansion the valves will not seat properly when the parts are heated.

GASOLINE ALLEY—IS THIS A PET PEEVE OF YOURS?



PRACTICAL PARAGRAPHS

By S.P. LaDue

Dry Cells in Winter.
Owners who have been using five dry cells for ignition in summer will find it a good plan to couple on two more cells for cold weather use, as the cold subtracts noticeably from the power of these cells.

Clear Vision.
Here is a simple recipe for obviating the obscuring of the windshield glass by moisture in the fall days: Rub the glass all over with strong soapsuds made from automobile soap and permit the suds to dry. This prevents the formation of the small globules that hinder clear vision through the glass in rain or mist.

Sticking Wheel.
When you are confronted by a sticking wheel on a taper axle and have no wheel puller at hand, here is the solution: Run the nut off entirely and then run it on again

with the castellated end toward the wheel. True the other end of the nut up flush with the axle, letting the wheel drop down onto the ground from the jack. Now hit the nut three or four smart taps with a hammer and the wheel will start every shot.

Wire Sizes.
Contrary to the seeming ideas of many car owners, there is considerable difference in the properties of electric light wire. For instance, the resistance of number 10 gauge copper wire 12 feet long is 2 1/2 ohms. That of the same length of number 16 wire is four times as great. The electric lights on the motor car call for the number 10 gauge wire; be sure that no heavier gauge is used.

Cracked Water Jacket.
A cracked water jacket may be mended at home if the car owner is a moderately handy workman. Drill a small hole at each end of the crack and tap it for a small copper plug. Next scrape the surfaces near the crack until the metal is bright. Cover the crack with soft copper filings and melt them in with a blow torch. Use a flux of rosin dissolved in alcohol.

Emergency Light.
A self-contained electric hand lamp of the kind that is commonly carried by watchmen is invaluable in emergencies about the motor car.

If the lighting system fails entirely when the car is on the road at night, trouble, lamp and all else is gone together. Unless there is a light with a separate source of supply on the car the driver must work in the dark or by matches. Long distance motorists make a practice of carrying an oil lantern for just this reason.

Reviving Dry Cells.
It is possible to get increased amperage from partly run down dry cells by crowding down the material near the carbon element with a small piece of wood and a hammer. This loosens the obstructing material from around the carbon and permits free chemical action. The asphaltum on top of the cell may be sealed again by application of a little heat.

Rubber Mallets.
The car owner who does much work around his vehicle should certainly have one of the rubber mallets that are designated to permit hammering of polished surfaces without marring the finish. For smoothing out dents in the fenders or similar disfigurements these mallets are invaluable. In an emergency the head of an ordinary hammer may be covered with several thicknesses of old rubber to serve this purpose.

VELIE IS FIRST CAR OVER TOUGH MOUNTAIN ROAD

Leads All Others Into Yosemite Valley This Season Via Wawona Road.

The much coveted honor of being the very first car to enter the Yosemite valley over the extremely difficult Wawona road goes this year to the Velie model 34. A wire received yesterday by Charles A. Gardner of the Securities Motor company, Velie distributors, announces the fact that after a strenuous fight lasting 13 days, the sturdy Velie car has finally landed on the floor of the valley and thus carries off the laurels for this season.

The wire to Gardner reads as follows: "Velie car and crew arrived in Yosemite valley floor today, first in the 1920 Saxon fills in the motor car field, just ask any motorist what are his commonest troubles," says C. A. Pfeffer, president of the Saxon Motor Car corporation. "Nine times out of ten you will get this answer, 'The use of low-grade fuels and the carbon problem.' These two difficulties have been persistent motor-evil for a number of years. In coping squarely with these evils and overcoming them, the 1920 Saxon has earned an instant welcome among the motor-wise."

To Get at Bolts.
In some instances a nut is so placed that it is extremely difficult to reach with a wrench. Often this may be obviated by reversing the bolt, whereby the nut is brought within easy reach.

New Home of Troup Auto Supply Co.



The above picture shows the new location of the Troup Auto Supply company at 2027-29 Farnam street, which affords several times the amount of floor space as the old location at 1921 Farnam street.

Duplex Engineering Solves Two Problems For Saxon Owners

"To appreciate the place which the 1920 Saxon fills in the motor car field, just ask any motorist what are his commonest troubles," says C. A. Pfeffer, president of the Saxon Motor Car corporation. "Nine times out of ten you will get this answer, 'The use of low-grade fuels and the carbon problem.' These two difficulties have been persistent motor-evil for a number of years. In coping squarely with these evils and overcoming them, the 1920 Saxon has earned an instant welcome among the motor-wise."

This scientific principle is built into every part of Saxon. In the Saxon duplex manifold the first of these vexing difficulties has been met. Low-grade gasoline which would clog the average motor with carbon can be safely used in Saxon, due to the advance construction of this manifold.

Regardless of the quality of gas, Saxon's duplex manifold delivers maximum power to every cylinder under every condition of service. It provides a warm dry mixture for lower power driving and a cold dense mixture for heavy work.

Emergency Patch.
Ordinary tire tape may be used to patch inner tubes by running it twice around the tube and overlapping the ends so as to cover the leak. Surgeon's plaster may be used in the same way in an emergency.

Stage Company Adopts Cadillacs in Mountains

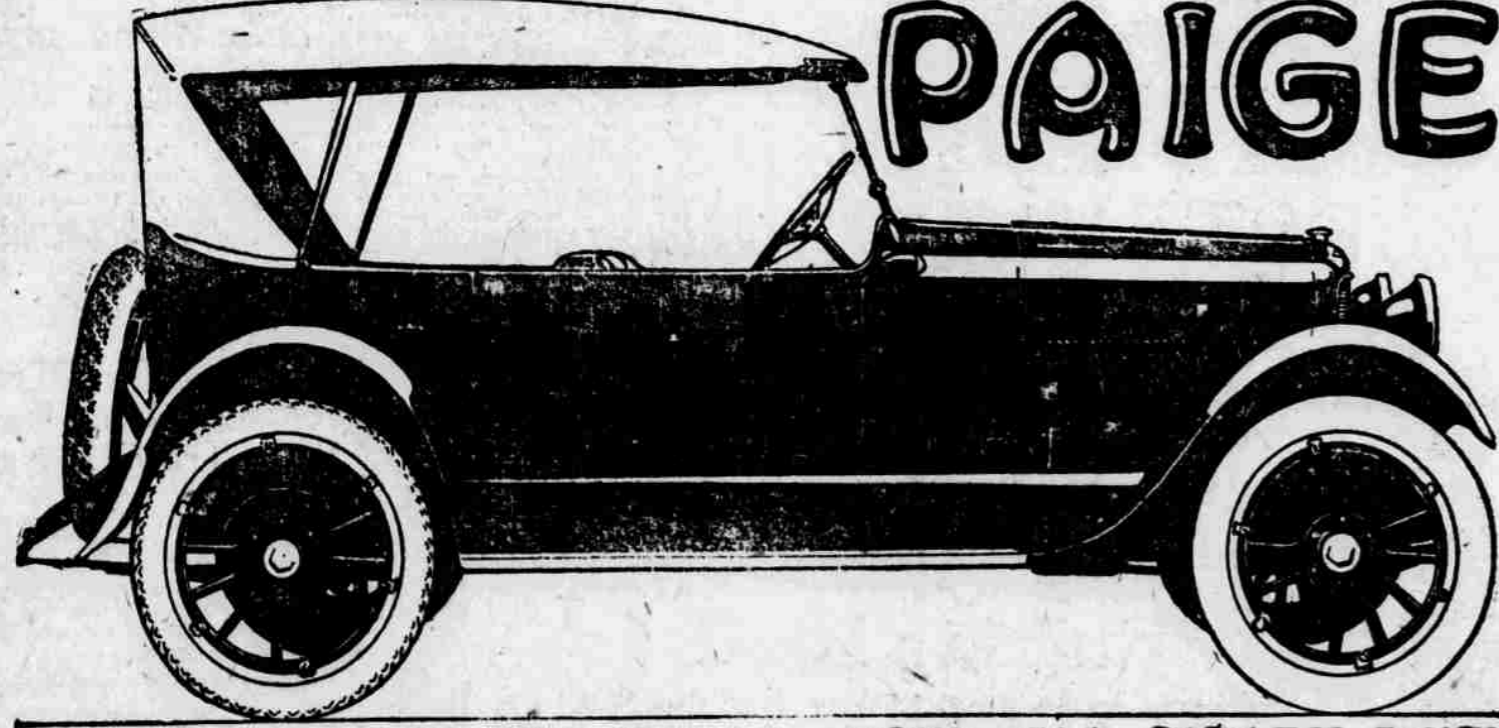
Over a beautiful mountain scenic route between San Diego and El Centro in California, a distance of 125 miles, 21 Cadillacs make daily trips on a six-hour and 30-minute schedule, including a half-hour stop for meals.

About two years ago, after having experimented with various makes of automobiles, the Pickwick-White Star United Stages decided to give the Cadillac a tryout. The result was that they are now said to be using this type of car exclusively.

In addition to the fact that the use of Cadillacs makes it possible for them to maintain their schedules another worthwhile advantage was that they were not continually delayed by stopping to replenish the water in the radiators, notwithstanding the long, steep grades.

The regular seven-passenger car employed, which, in addition to carrying usually the full complement of passengers, are generally well loaded with baggage.

CADILLAC
Recognized everywhere for its PERMANENCY of VALUE
J. H. Hanson Cadillac Co.
Omaha Lincoln



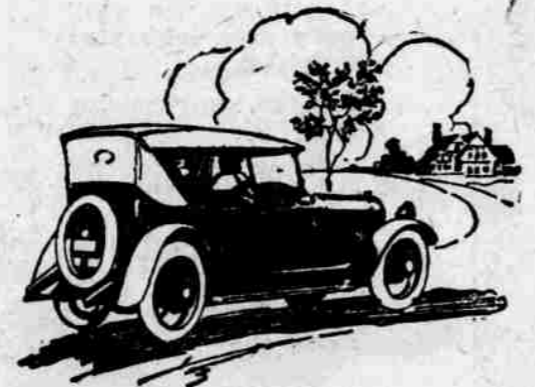
THE MOST BEAUTIFUL CAR IN AMERICA

THERE has never been any doubt in the public mind about the five-passenger Paige Glenbrook. From the very first it has been acknowledged—and quite properly—as setting a new standard of values in Light Sixes.

It appeals especially to those who have acquired the new American habit of thrift—who believe that true economy consists in getting the greatest values for the least money.

By this we do not mean that the Paige Glenbrook is, in any sense of the term, a cheap car. Its value is emphasized not so much by its conservative price as by the large measure of comfort and satisfaction received in return for the sum invested.

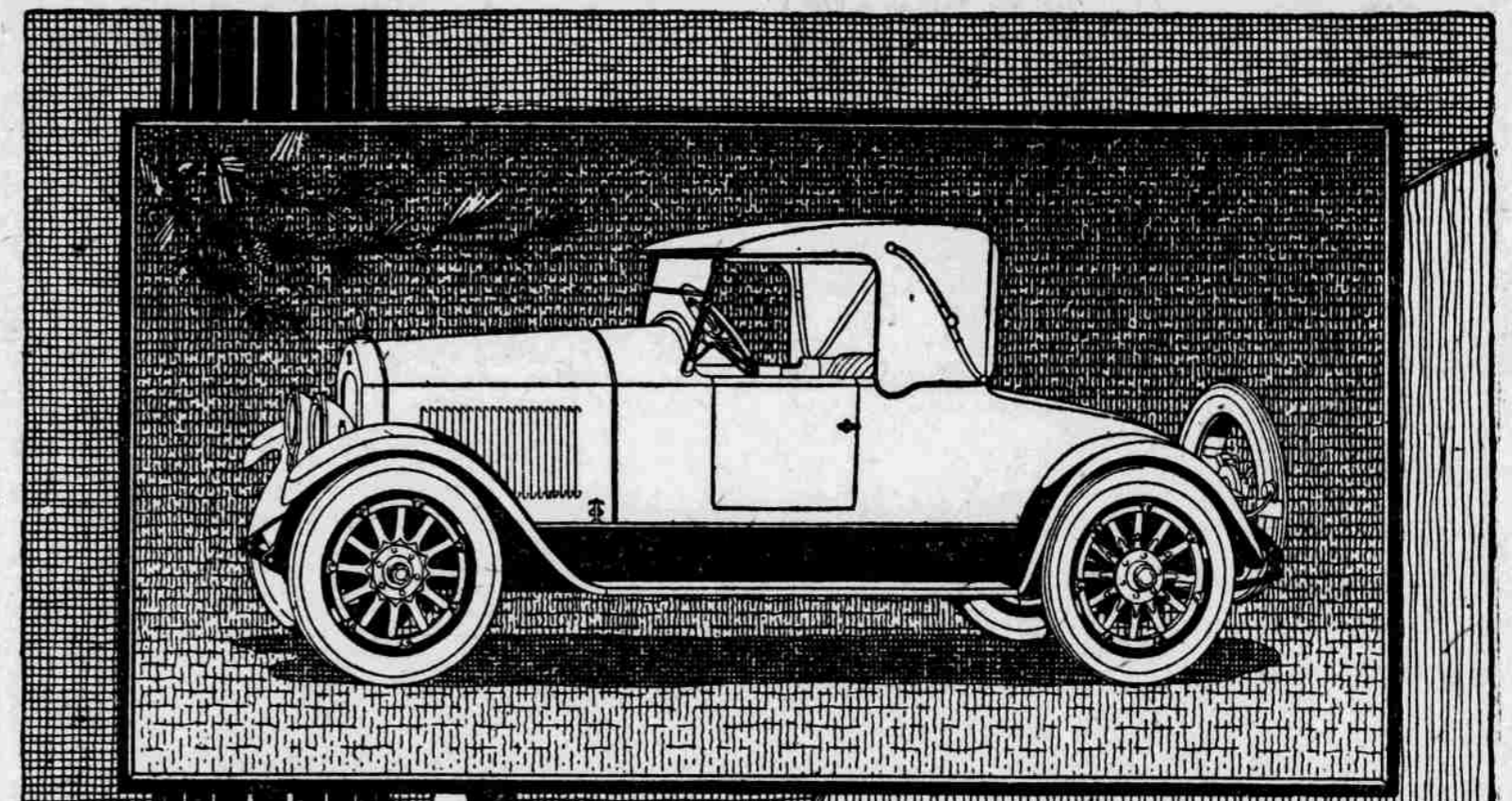
Because of noteworthy developments in chassis and motor, this five-passenger Paige is a car of outstanding mechanical excellence. And its advanced body design has endowed it with a roominess and comfort that are truly exceptional.



With the demand for the Paige Glenbrook far exceeding our utmost production efforts, a prompt decision is advisable. Orders placed now mean just so much more of the best touring season assured for your enjoyment.

PAIGE-DETROIT MOTOR CAR COMPANY, DETROIT, Michigan

Manufacturers of Paige Motor Cars and Motor Trucks
Nebraska Paige Company
Nineteenth and Douglas Streets
Phone Douglas 3660 Omaha, Nebraska



The ONLY Aero-EIGHT

THE world has produced great masters—geniuses Tall—but in the minds of men there will remain always but one Michael Angelo. And though there may be countless eight cylinder cars—all worthy contributions to the science of automotive engineering and designing—there is only one Aero-EIGHT.

An Exclusive Creation

It is distinctive, original, exclusive. There is something indefinable about it that vests it with an inherent quality of goodness, worth and ability which is peculiarly its own—which eludes imitation.

Its beauty of lines, its wealth of energy, its speed when desired, its comfort always, its unparalleled economy, its luxurious completeness form a combination of virtues rarely encountered in such perfect balance and harmony.

The Cole Aero-EIGHT has an air of unconcerned power—a complacency that takes for granted its mastery over every emergency and inspires confidence in its ability to reduce the extreme to the commonplace.

The ability of the Cole to transcend all present accomplishments by instilling a note of futurity in all that it achieves gives the Aero-EIGHT a character humanly individual.

Traynor Automobile Company
2210 Farnam Street, Omaha, Neb.

De Brown Auto Sales Company
Lincoln, Neb. Wholesale Distributors Des Moines, Ia.

COLE MOTOR CAR COMPANY, INDIANAPOLIS, U. S. A.

THERE'S A TOUCH OF TOMORROW IN ALL COLE DOES TODAY