

MEREDITH MADE HEAD OF SAXON CONSTRUCTION

Noted Engineer Made Manufacturing Manager of Saxon Motor Car Corporation.

C. A. Pfeffer, president of the Saxon Motor Car corporation, has just announced an important addition to the Saxon organization in the person of H. P. Meredith. Mr. Meredith will occupy the position with the Saxon Motor Car corporation of manufacturing manager.

His former experience fits in peculiarly for the position he has assumed. Starting in life as a practical mechanic, he achieved one success after another until he became assistant to General Atterbury, vice-president of the Pennsylvania railroad. Mr. Meredith enjoys one distinction which can be claimed by very few men and, that is, having walked through the bed of the Panama canal from the Atlantic to the Pacific ocean before the water was turned into the famous passage. He made the trip to Panama for the purpose of inspecting this engineering feat before the water was turned into it.

On November 1, 1917, Mr. Meredith accepted a position with the DuPont company as general maintenance engineer. During the war he was mechanical superintendent of the Old Hickory Works of the DuPont plant at Jacksonville, Tenn., one of the marvels of America's martial organizations. At the time the armistice was signed 3,000 men were employed under Mr. Meredith's direction. In February, 1919, Mr. Meredith returned to the DuPont headquarters at Wilmington and was made engineer in charge of the plant extension department for the Cadillac Motor company. In this capacity he had a supervision of 27 engineers and headed the committee of engineers who visited all the principal automobile factories in the United States building high-grade motor cars.

As a result of the investigation of manufacturing methods and practices in these plants, Mr. Meredith submitted a recommendation to the General Motors company for the abandonment of the Cadillac plant and the construction of the new factory. When the recommendation had been approved, Mr. Meredith was put in charge of working out all of the details of design, including routing, correlation of departments, etc.

When Mr. Meredith had completed this task, his enthusiasm about automobile production and factory management led him to seek further opportunity for the development of his undoubted ability. The 1920 Saxon, incorporating the

GASOLINE ALLEY—THE NEW BABY.



scientific principle of duplex engineering, naturally attracted his attention. The manufacturing principles of the Saxon Motor Car corporation made a further appeal to him. As a result, Mr. Meredith assumed the position of manufacturing manager for Saxon.

It is certain that few men in the automotive industry have had so complete a schooling as Mr. Meredith and the benefits of his practical experience are a positive assurance of quality to every Saxon owner.

Cut-Away Motor Shows All Working of the Motorcycle

A "cut-away" motor showing practically every working part of the new Harley-Davidson with the slant-head cylinders, was received by Victor H. Roos, the local Harley-Davidson distributor.

"The X-ray motor shows even the spark and the action of the carburetor and will be a great help in explaining what makes the wheels go round," says Mr. Roos.

Better to Pay the Big Price for Roads Than To Go Without Them

"Even if the cost of road building has increased with everything else, it's better to pay it so that our exorbitant transportation costs may eventually be lowered," says C. J. Dutton of the C. J. Dutton Automotive Co., local Kiesel distributor.

"While the production of goods has been lowered by new methods and general application of machinery, in contrast the cost of distributing these goods has not been reduced. Why? Because the distribution channels, of which the lack of good roads is one of the main expense items, have not been expanded to meet the new requirements.

"Good roads reduce transportation costs; poor roads increase these costs.

Racing Drivers are Garbed Just Like a Real Arctic Explorer



The guiding of an automobile around a two-mile track at a speed of from 60 to 70 miles an hour requires both skill and courage. But to maintain such a speed for eight hours at a stretch with the mercury registering below zero and in the face of a bitter wind is a feat demanding the utmost in endurance from both car and driver.

When a stock Essex set a new world's record for long distance endurance by covering 3,037 miles in 50 hours on the Cincinnati speedway, the three drivers, "Tommy" Milton, "Dave" Lewis and De Lloyd Thompson, the aviator, were dressed like Arctic explorers. Besides their ordinary clothes they wore overalls, several sweaters well padded with newspapers, and heavy sheepskin aviation suits. Their faces were covered by chamois masks while leather helmets protected their heads.

Prospective Buyers Order Cars Six and Eight Months Ahead

"Prospective automobile owners realize the shortage of cars and are consequently getting their orders in months before any possibility of delivery," says Carl Changstrom of the Standard Motor Car Co.

"To have orders on our books six and eight months ahead is no longer a novelty. We have found prospective owners realize conditions and are resigned to wait. But when we receive an unexpected car load or two from the factory, permitting us to make earlier deliveries to our customers, as one owner expressed yesterday, 'Ain't it a grand and glorious feeling?'"

Stage Company Adopts Cadillacs for Daily Trip

Over a beautiful mountain scenic route between San Diego and El Centro in California, a distance of 125 miles, twenty-one Cadillacs make daily trips on a six-hour-and-thirty-minute schedule, including a half hour for meals.

About two years ago, after having experimented with various makes of automobiles, the Pickwick-White Star United Stages decided to give the Cadillac a try-out. The result was that they are now said to be using this type of car exclusively.

In addition to the fact that the use of Cadillacs makes it possible for them to maintain their schedules, another worthwhile advantage was that they were not continually delayed by stopping to replenish the water in the radiators, notwithstanding the long, steep grades.

The regular seven-passenger cars are employed, which in addition to carrying usually the full complement of passengers, are generally well loaded with baggage.

More rubber is used in the automobile production than any other industry in the country.

HAVE COMMUNITY CENTER FOR MEN WHO BUILD AUTO

Skilled Men Who Build LaFayette Car to Have Fine Homes in Segregated District.

The development of an independent community adjacent to its plant has been started by the LaFayette Motors company, which is located at Mars hill, four and one-half miles from the center of Indianapolis.

The LaFayette Homes Building company has been incorporated, with a capitalization of \$1,000,000, and has started work upon the construction of 200 modern homes to assist in housing the skilled labor required in the production of the new LaFayette car.

There is already a small community in the vicinity of the plant, but the new development is calculated to take care of the increasing populace resulting from the rapid expansion which even the present interest in the LaFayette car seems to warrant.

A wooded ridge of 110 acres, five blocks from the factory, has been selected as the residential center of Mars hill. Work has been started in building upon this attractive site a nucleus of 200 modern homes, no two houses alike, and served by a business district with stores, bank, hotel, garage and motion picture theater.

A modern grade school and a large park and playground are among the community advantages which are receiving the attention of the home builders.

Limit of Compression

One of the favorite winter sports of the "speed bug" is to tinker with his engine, trying to increase its compression. It will be well for the enthusiast to remember that when the compression is placed too high the mixture will be ignited before the proper part of the cycle, due to the heat engendered by compression added to the heat absorbed from the metal parts.

Carburetor Flooding

Flooding of the carburetor is caused by several possible troubles. The needle valve may be held open or be leaking. Dirt may have collected on the seat of the valve, preventing its closing. Imperfect or worn needle valve or seat. Mechanism stuck. A too heavy or leaking float, which would sink too deep, holding the needle valve open. Level too high. Loose spray nozzle.

Patriot Motors Co. Now Has Ten Million Capital to Branch Out

Articles of incorporation for the Patriot Motors company of Lincoln, Neb., with a capitalization of \$10,000,000, were filed recently. The new firm springs out of the old Hebb Motors company, which had a capitalization of only \$2,500,000. The increase in capital stock and change in name means a big expansion program, involving three or more new buildings on the company's 17 1/2 acres in Havelock, and branching

out in the production of pleasure cars. The company will furnish employment to between 2,000 and 3,000 people before the close of this year.

The incorporators of the new concern are A. G. Hebb, E. C. Hammond, L. A. Winship, K. W. Gillispie and A. H. Armstrong, who were the officers and directors of the Hebb Motors company. With the formation of the new corporation, Lincoln will have the third largest truck manufacturing establishment in the United States, according to statistics.

Water System Failure

In the pump circulation water system failure of the circulation will probably be due to lack of water, to

a sheared impeller key, broken pump shaft, leaky pump, sediment, old hose lining or a frozen water line.

Removing Scale

This is the time of year when it is well to remember the good old method of loosening scale that has formed in the cooling system. Six pounds of washing soda dissolved in five gallons of boiling water is the correct formula. Four this solution in the cooling system and allow it to remain for a day, then drain and flush the system out with clean water and re-fill.

Several firms in Austria are now manufacturing motor plows.

Announcement

We have moved to larger quarters at 2027-2029 Farnam street, one block west of our former location, where we will carry a complete stock of quality accessories.

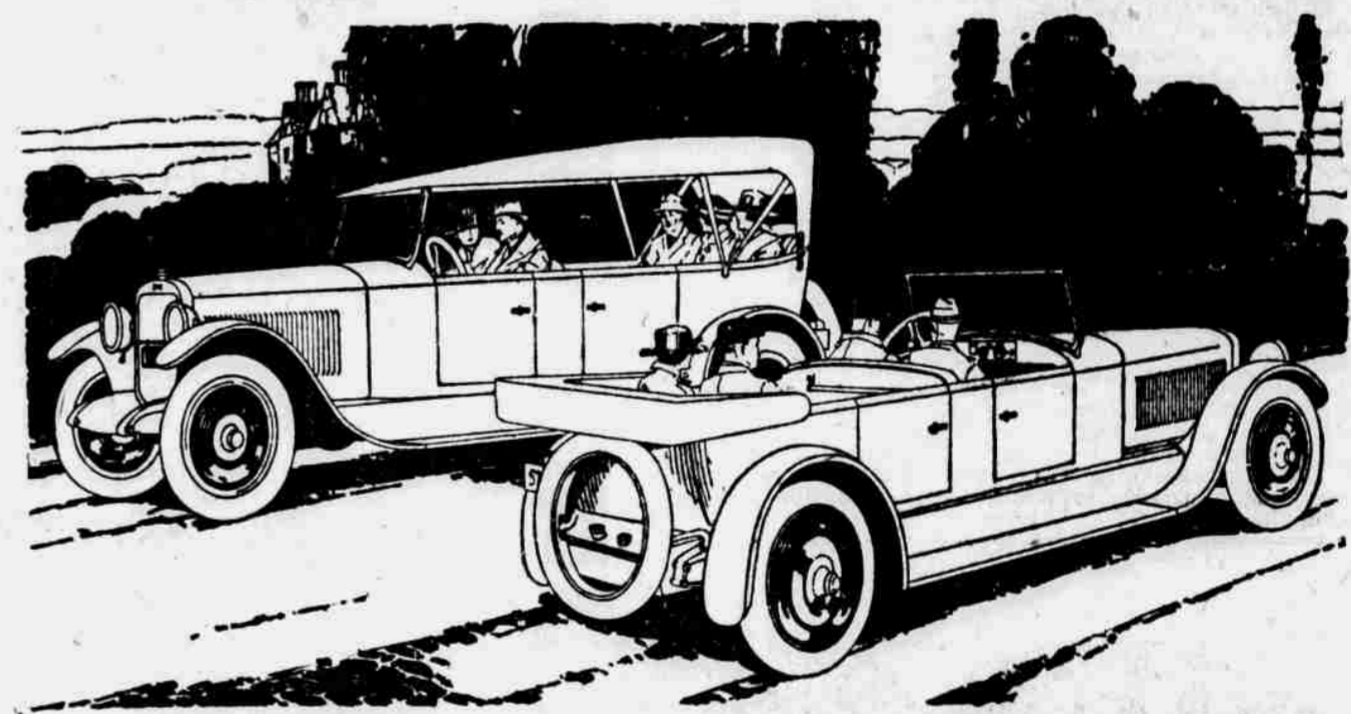
In our new location we will continue our policy of courteous treatment, good service and fair prices—and we respectfully solicit your patronage on that basis.

Goodyear Tires Veedol Oil
Marathon Cord Tires

Troup Auto Supply Co.

2027-2029 Farnam Street

CHANDLER SIX Famous For Its Marvelous Motor



Two Great Chandlers Right Out In Front

HERE are two Chandler Six models which the big and constantly expanding Chandler factory production has never been able to build in volume that could supply the demand of discriminating motor car purchasers. They are the Chandler Six Touring Car and Dispatch Car, the former a big, handsome, roomy, comfortable, real seven-passenger car; and the latter a trim, smaller car, suggestive in its appearance of all the good things of outdoor life. The Dispatch Car has a touch of snappy style in its clean lines, and is strikingly finished in the beautiful Chandler Rainbow Blue. It seats four persons in restful comfort.

Both the Chandler Six Touring and Dispatch Cars are mounted on the same standard Chandler chassis, developed, through seven years of manufacture, to a surpassing point of excellence and famous for its really marvelous motor. The Chandler Car is priced much lower than other cars which may, perhaps, compare with it.

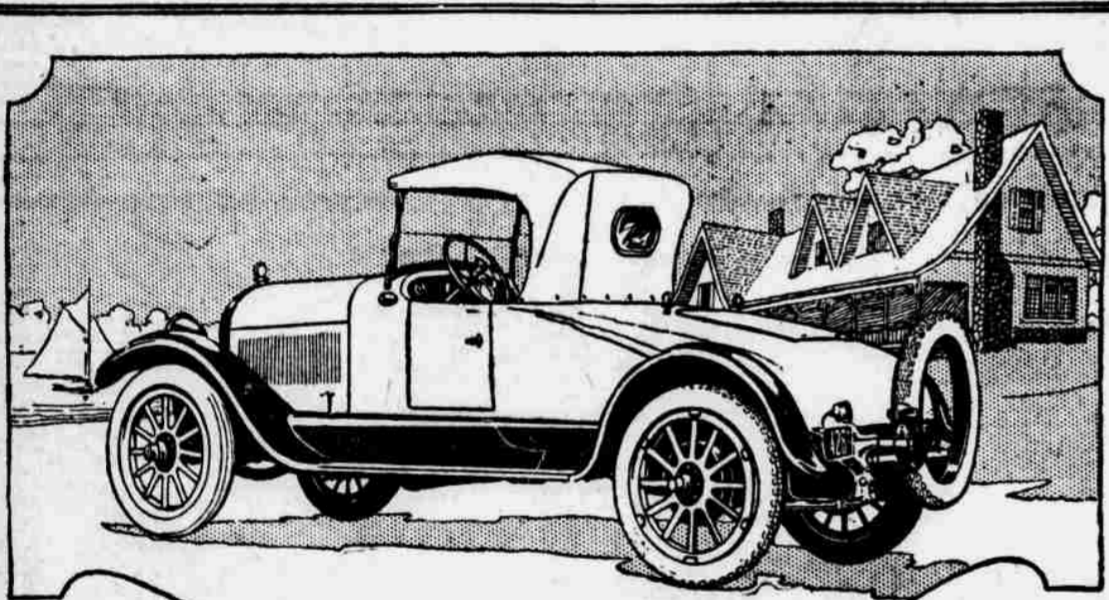
If you want your new Chandler this Spring, place your order now

- SIX SPLENDID BODY TYPES
- Seven-Passenger Touring Car, \$1895
 - Four-Passenger Roadster, \$1895
 - Four-Passenger Dispatch Car, \$1975
 - Seven-Passenger Sedan, \$2895
 - Four-Passenger Coupe, \$2795
 - Limousine, \$3395
- (All prices f. o. b. Cleveland, Ohio)

CARD-ADAMS MOTOR CO.

Lincoln Omaha
1732-38 "O" St. Omaha, Nebraska, Western Iowa and West Half South Dakota
Omaha Retail Sales, Card-Adams Cleveland Co., 2421 Farnam St. 2421-23 Farnam St.

CHANDLER MOTOR CAR COMPANY, CLEVELAND, O.



STEPHENS Salient Six

All-Around Road-Performance Helps Make

Its Greater Value—Its Greater Service

In owner reports, we find the better basis for judging the greater value and the greater service of the Stephens Salient Six—rather than the striking records made on the polished floors of the speedway or the prepared track of the race course.

For Stephens also has made records on the Speedway that are striking.

Here we repeat the owners' proof of that all-around road performance, which you can expect from your Stephens Salient Six:

"Averaged 19 miles per gallon for 3,250 miles,—

"That is salient which is strikingly manifest or which catches the attention at once."
—WEBSTER.

one stretch maintained average speed of 45 miles per hour for 15 consecutive hours,—not a trouble." (Name on request.)

"Running without falter,—40 hours, 13 min.—using distillate,—carrying four passengers,—traveled 1,197 miles, mountain route,—completed in beautiful shape. Average speed 29.93 miles per hour." (Name on request.)

"Daily service during melon season,—Imperial Valley. Hotter than proverbial,—4,000 miles going 18 hours a day,—using only 1 1/2 quarts of oil and one tea cup full of water the entire trip." (Name on request.)

You can judge from owner records, but to know arrange to see and ride in the Stephens Salient Six today.

Pink Cord Tires Regular Equipment on All Models

Mid-City Motor and Supply Co.

Distributors Telephone Tyler 2462 2216-18 Farnam St., Omaha

A GREATER VALUE A GREATER SERVICE

Manufactured by Stephens Motor Works of Moline Plow Company