

FIRST STORE IS RENTED ON NEW DODGE STREET

Furrier Leases Store Room in Morris Apartment for Term of Ten Years.

A retail furrier has leased one of the stores on Dodge street in the Morris apartment building for 10 years at a rental of \$2.50 per square foot for the first year, increasing 10 per cent each year. This brings the rental at \$5.90 a square foot the last year. The term rental is approximately \$25,000. Realtors are interested in this lease because it is one of the first retail leases signed on Dodge street since the grading started. The Morris apartment building stores, of which there are five, will be ready about September 1. The furrier lease was made by George T. Porter of the American Securities company. The Pantel Realty company owns the building. A drug firm is negotiating for the store in the northwest corner of the building. The present grading of Dodge street was anticipated by builders

of the Morris apartment house, and stores were provided for, although the space was underground at the time the building was erected. Similar anticipation was exercised in erecting the El Beudor apartment at the northwest corner of Eighteenth and Dodge. There will be four stores on Eighteenth street in the El Beudor, and two on the Dodge street side of the building.

Police Officer Stripped Of Badge for Drunkenness

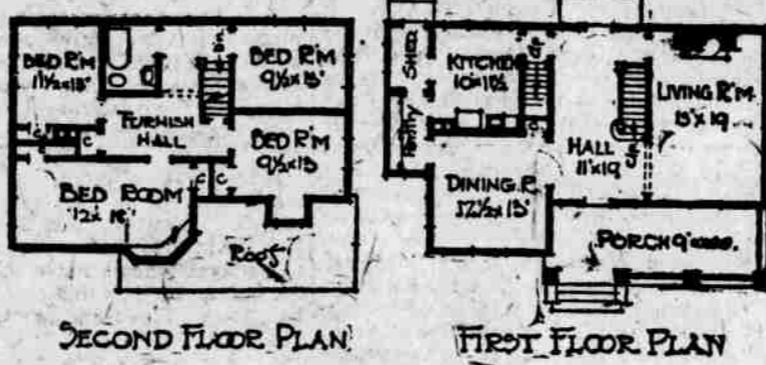
Policeman N. Lundell was stripped of his badge and gun Friday night by Police Captain Vanous on charges of alleged drunkenness. Upon failure of the officer to attend a Community center entertainment at the Edward Rosewater school Sergeant of Police Samuelson, detailed to investigate, found Lundell a block from the school in an intoxicated condition, he reported. Vanous suspended temporarily the policeman who was on probation.

Saves Money for City
City Commissioner Butler declares that he saved the city \$3,000 by having the foresight last fall to anticipate a rising market on asphalt and asphalt filler which his department uses for the asphalt repair plant. During the winter he received 100 tons of asphalt filler at a contract price of \$23.50 per ton and 200 tons of asphalt at \$22 per ton, the prevailing prices now being from \$30 to \$35 per ton.

A Beautiful Home



A two-and-a-half story house of unique design with exterior of cement plaster is shown. The first floor plan has a central hall to rear, of a colonial style, with leaded lights at front and rear entrances, reception hall, large living room, dining room, pantry and kitchen. The bedrooms on second floor are all large with good ventilation and well lighted. Special attention has been given to the provision of ample closet space.—Clyde Smith Adams, Architect.



SCIENCE SHOWS HOME GARDENS THE BEST OF ALL

Most People Overlook the Main Feature, That of Having Strictly Fresh Vegetables.

Among the profits of the home gardener is one which is seldom counted, but which would alone be sufficient to justify the trouble and expense of growing one's own vegetables. It lies in the huge advantage of serving things fresh, within a short time of being picked from the plants on which they grew. It has long been known that the exquisite flavor of fresh peas and sweet corn, to cite notable examples, began to deteriorate if they were not served within an hour after they were gathered. This opinion has now been fortified by science, through experiments conducted by Messrs. Straughn and Church and published by the bureau of chemistry of the Department of Agriculture. Prof. Charles A. Appleman of the Maryland experiment station has published a full report of chemical experiments of the same order. The experiments establish that

the sugar content of sweet corn will range in the neighborhood of 5 per cent. This is in the proportion of three spoons of sugar in a cup of coffee. In a normal summer temperature, even with the husks still on, the sugar content will begin to fall in an incredibly short time, perhaps in the first 30 minutes after picking. In scientific language the cause of this is the condensation of polysaccharides, chiefly starch. Respiration is, indirectly, also a factor. In the first 24 hours after corn has been picked, 30 per cent of its sugar will have disappeared and in the next 24 hours, 25 per cent more. About 30 per cent of the sugar remains fixed in the corn, but after 96 hours all evidence of the delicious corn flavor has disappeared. Wrapping the corn in oiled paper does not help. The only thing which will prevent the loss of sugar is refrigeration. In a freezing temperature, only 7 per cent loss occurred in 24 hours, and in a temperature of 50, about 15 per cent.

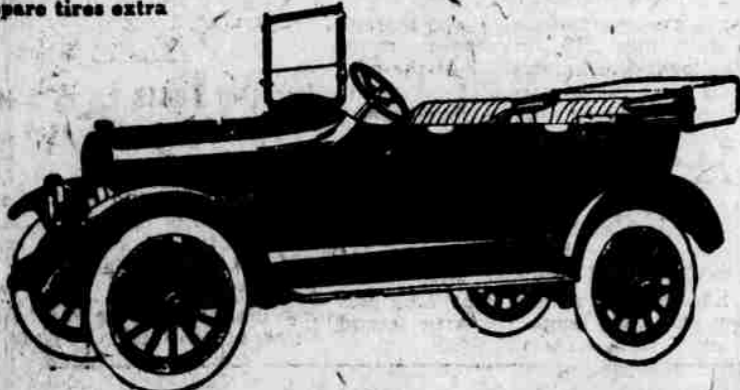
How Will You Ever Know That **Stronghold** CORD-FABRIC AUTOMOBILE TIRES Will Give You More Mileage Unless You Use Them "GIVE 'EM AIR AND WATCH 'EM WEAR" **V. H. ROOS** 2701-3-5-7 Leavenworth Street Omaha

DORT

Quality Goes Clear Through

Your own examination of the Dort will give you ample evidence as to the skill, and care, and soundness with which it is built.

- PRICES**
Open Cars
Touring - \$1,035
Roadster - \$1,035
Four-seater Cars
Sedan - \$1,665
Coupe - \$1,665
F. O. B. Factory
Wire wheels and spare tires extra



TOOZER-GERSPACHER MOTOR CO.

Omaha DISTRIBUTORS Des Moines

Raapke Motor Car Co.

Omaha Retail Dealer 24th and Harney Streets

DORT MOTOR CAR COMPANY

Flint, Mich.

An Early Start for Sweet Peas Brings Best Results

It is not generally known that sweet peas can be started indoors in a similar manner to other annuals, but it is so, and much better results are obtained by this method than those which result from outdoor sowing during the month of April. Although they can be transplanted from boxes or flats, it is a better plan to start the seedlings in small pots, and give them one repotting, or perhaps two, before planting out in the garden. The usual method is to sow one seed in a two-inch pot. Paper pots answer admirably for this purpose, and after having been sown the pots should be packed tightly together in a flat, so as to keep them from collapsing, which they are liable to do, due to watering.

Transplanting the Seedlings.
When the seedlings are about two inches high they can be transplanted to three or four-inch pots, and when they are six or seven inches high the top should be pinched off, which causes them to branch freely, and become sturdy, bushy plants.

The ground for sweet peas should be heavily manured previous to planting them outside. A trench should be dug at least a foot deep where the plants are to go, filling the bottom to a height of six to eight inches with thoroughly rotten stable manure. Over this place two or three inches of good soil containing a fair proportion of fibrous loam, and leaf mould if obtainable. The surface should be leveled and raked and should be a few inches lower when finished than the surrounding ground, forming a shallow ridge. The plants should be transplanted from a foot to 18 inches apart in the row, and a few small twigs placed around them, converging to a point, so that the young runners can be enticed to grow upward to eventually ramble over the brush which is later to be put around them. Watering should be regularly at-

tended to, and if the drainage is good there is nothing sweet peas like better than a copious supply of water, but it must not be allowed to lodge or become sour about the roots.

Mulching the Plants.
As the plants grow they should receive a litter of straw stable manure laid on the surface of the ridge. This tends to prevent evaporation, and will keep the subsoil rich and moist.

If facilities for this indoor starting are not possible, the same preparation for the trench previous to sowing outside is advised and when the young plants are three or four inches high, they should be thinned out by leaving a plant about every six or eight inches apart, and the transplants can be replanted in some other part of the garden if available. In sowing outdoors, sow a double row six inches apart, in each trench. As the vines bloom the flowers should be gathered daily, so as to prevent seed pods being formed.

Seven Sales Made by Firm For Investment Purposes

The Payne & Slater company announces seven investment property sales in March, totaling \$113,625, and four smaller deals totaling \$7,650. The total is \$121,275.

- The investment deals:
Payne & Slater syndicate to an outside syndicate, 50-foot frontage, at 2418-20 Leavenworth, \$12,500.
Payne & Slater company to the same syndicate, 64-foot frontage at 2618-18 Leavenworth, \$10,000.
Payne & Slater company to V. P. Childs, southwest corner of Twenty-fifth and Leavenworth, \$4,250.
Payne & Slater company to Joseph H. Suter, southeast corner of Twenty-fifth and Capitol avenue, \$41,122, \$10,000.
Payne & Slater company to outside syndicate, southeast corner of Twenty-fifth and Cumings, 55x115, \$6,500.
Dr. A. Johnson to R. B. Carney, two double brick flats at 817-23 Park avenue, \$20,000.
Payne & Slater syndicate to Investor, Norwood and Kenwood, triple flats at 3223 Harney ground 150 on Harney by 102 feet, \$45,000.

Buy On Harney Street For Big Electric Garage

Ground 100 feet square at 3223-25-27 Harney street has been purchased by Frank S. Selby from Martin Fromm and J. C. Comfort. Mr. Selby is having erected a building 100 feet square, costing \$40,000, and has leased it for 20 years to Walter Anderson.

Mr. Anderson, a pioneer in electric cars here, will install an automatic electric car service station. Mr. Anderson says his station will be the second of its kind in the United States, the other being in Los Angeles.

H. C. Carter has been appointed factory manager of the Napoleon Motors company, Traverse City, Mich. Mr. Carter was for a number of years with the Dort Motor Car company at Flint, leaving that organization to form the inspection department of the Republic Motor Truck company, Alma, Mich. He has been chief inspector for the Republic company since the organization of the inspection department. His experience has been varied in the automotive field and C. D. Peet, sales manager of the Napoleon Motors Co., says that his organization feels itself fortunate in securing Mr. Carter's services.

Real Estate Deals For March Showing Some Immense Gains

Official records of real estate business in March, filed in the office of Register of Deeds Pearce at the close of business March 11, was \$4,213,287. This was a gain of nearly \$2,500,000 over the same period a year ago. The figure last year was \$1,749,502 on March 11. There were 349 deeds filed in March up to March 11, last year, compared to 515 this year.

Sweet Says New Pappio Golf Course Is Assured

The new Pappio Golf Club is now assured, Ernest Sweet announces. He says the enterprise involves an expenditure of \$265,000. Work on the new club house and course will begin this spring. The course will not be ready for use until the latter part of 1921. The club house will cost \$100,000, the course \$100,000 and \$65,000 for improvements. The club will be on the West Dodge road.

Report Many Sales

Twenty-three real estate sales are announced by Hastings & Heyden for the last two weeks, totalling \$95,590. One of these was the sale of 2235 Howard street for \$16,500 to J. W. Welch.

100% Men in the HANSEN-CADILLAC SERVICE DEPT.

are recognized and rewarded by Honor and Cash Bonus System. Have your Cadillac attended by efficient Cadillac men—trained to render the best service. We do it right. **J. H. HANSEN CADILLAC CO.** Guy A. Wharton Harry Reid S. J. Alexander

EACH **O'BRIEN-DAVIS-COAD** REBUILT **DODGE BROTHERS** MOTOR CAR is priced to you by adding the cost of rejuvenating to the allowance given the previous owner, plus a handling expense. Our prices are necessarily a little higher than the ordinary "as is" figure quoted when nothing has been done to improve the car's condition. The only difference is that you pay—included in the first cost—what you otherwise have to pay in repair bills the first few months of use. It is really better to be safe than sorry in your purchase of a Car. Let us explain other reasons why you should buy a rebuilt Dodge. **O'BRIEN-DAVIS-COAD AUTO CO.** COUNCIL BLUFFS, IA. 103 SO. MAIN ST. COUNCIL BLUFFS, IA.

Delco KLAXON Remy Service Auto Electric Service Corp. Our Reputation Is Your Protection 2206 FARNAM ST. OMAHA PHONE DOUG. 5486 Authorized By **United Motors Service** Incorporated Service Dept. of Delco, Klaxon, Remy General Offices: Detroit, Michigan

A well-defined preference for enclosed cars as the ideal vehicle for all-year driving was evidenced at the Automobile Show. Folks are now convinced that the closed car is cooler in the Summer, also warmer in the Winter, and in stormy weather there is no comparison. The all-aluminum body of the Westcott Sedan eliminates the last objection because there is no excess weight or bulkiness. We have a limited number of these models for immediate delivery. **Standard Motor Car Co.** 2020-22 Farnam St. Omaha, Neb. Our Sixth Year

THE LIGHTER SIX 115-inch Wheelbase Five-Passenger Touring, Two-Passenger Roadster, Three-Passenger Coupe (Straight Seat), Five-Passenger Sedan.
THE LARGER SIX 125-inch Wheelbase Seven-Passenger Touring, Five-Passenger Touring, Seven-Passenger Limousine-Sedan.

A Year's Abuse In 7 Days All Light Car Road Records Smashed At Indianapolis last week one of the new Overland 4 stock cars was driven 5,452 miles continuously in seven days and nights, over frozen country roads—and finished ready to do it again. This is an average of 772 miles per day; more than the distance between Toledo and New York City covered each day. This is another tribute to the cushioning effect of Triplex Springs and the quality of material in Overland 4. Touring, \$495; Roadster, \$495; Coupe, \$1,295; Sedan, \$1,795. Price f. o. b. Toledo, subject to change without notice. **Van Brunt Automobile Co.** General Offices 2562 Farnam St. Omaha, Neb. Council Bluffs, Ia.