

Finced \$13.65, Judge Cashes His \$250 Check—No Funds

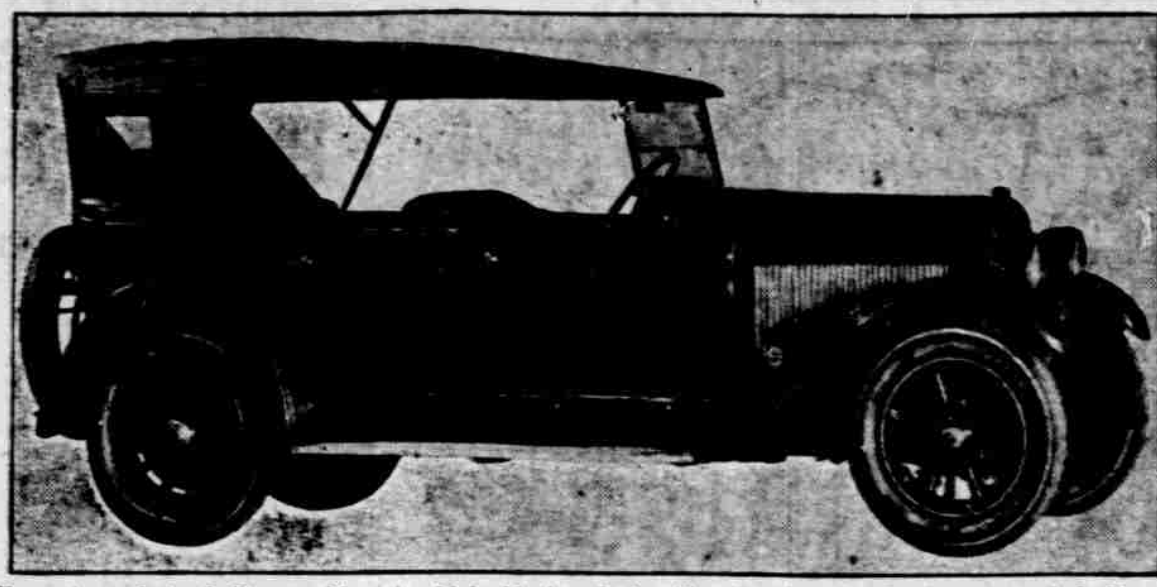
Moscow, Idaho, March 13.—William Boulton, alias "Dutch" Deming, recently appeared before Judge W. E. Mogridge of this city on a charge of grand larceny. He was fined \$13.65. Unable to produce the fine in cash, Deming presented the court with a check for \$250, out of which Judge Mogridge deducted the fine and returned to the prisoner at the bar his personal check for the difference. The prisoner's check proved to be a fake and the judge

was out \$235.35. Though Deming succeeded in eluding the police for several days, he was finally apprehended and now the judge is happy again.

Mudhen Feathers for Hats

Chicago, March 13.—The lowly mudhen is far from being an aristocratic bird, but its feathers make hats just as fetching as do those of the patrician ostrich, according to Mrs. Sarah Saban, director of home economics in one of the schools here. She advised women to wear mudhen feathers to beat the H. C. L.

LaFayette Reflects Art of French Court



Executives of the LaFayette Motors company of Indianapolis, who have shown their new car for the first time at the national shows this year, have found a very satisfactory answer to William Shakespeare's 300-year-old query: "What's in a name?" The name of LaFayette proved to be a source of inspiration to them and to all the engineers and designers who have contributed their skill and talent to the creation of an automobile that reflects both the high ideals of the illustrious Frenchman and the fine art of his period. In designing the LaFayette, these men not only followed the accepted and most advanced engineering principles, but studied, as well, the memoirs of the liberty-loving marquis and the history of the court of Louis the XVI, with the results that several refinements and appointments of the car have a historic conception. The radiator emblem, for example, is a cameo of LaFayette, onyx mounted and framed in silver, and resembles a prized antique fashioned by some famous craftsman back in the eighteenth century. A thorough and tireless search through historical museums, private collections and the literature of LaFayette's time was made in order that the design would be authentic. The design adopted has been accepted as official by the American Numismatic society.

SUBSTITUTE FROM STRAW.

During the world war the Canadians distilled a gasoline substitute from waste straw. The Greeks ran their motors on a liquid distilled from trees. In Sweden motors were operated on fish oil. Turkey motored motor tracks on mustard oil, and the Germans used a gasoline substitute not known, but which has a sickly, sweetish odor. To determine the engine power required to replace the work of horses, a strong horse was employed to wind up weights, and it was found that 22,000 pounds could be raised one foot per minute. For fear of giving undervalued, an allowance in overweight of half again as much was given, which made a horsepower 33,000 pounds per minute.

Announcing the New Location of Apperson Nebraska Motor Co.

2526 Dodge Street, Omaha, Nebraska

Our new quarters afford ample and better facilities for service and display quarters. We invite you to inspect our new quarters.

Chinese Deserts Wife When She Refuses to Sell Their Baby Boy

Paterson, N. J., March 13.—Mother love was vindicated in a clash with pagan custom by a decision of Chancery Master Robert Hopper in granting a divorce to Mrs. Anna Lee Chow, American wife of a Chinese merchant. Mrs. Lee Chow won the decree when she told of being deserted on refusing her husband's request to sell their first-born baby for \$100 in compliance with an ancient Chinese custom.

"I loved my husband, but I loved my baby more," she tearfully told the court. "He told me it was the custom in China to sell the first-born child and that he had found a buyer for our baby. I just couldn't do it, and when I refused he left me."

The master granted the decree on grounds of desertion, and in his findings complimented the woman on "her mother love." "The enlightened civilization of America has no place for the customs of the ancient races," he added.

Stearns Used in the Movies



The above picture of a Stearns-Knight model shows one of the many uses to which the modern motor car is put. Motor cars of today are just as essential to the production of a big motion picture as are the actors and camera men. A modern play calls for the automobile as a modern means of transportation. Reproductions of events in earlier history could never be staged on a profitable basis were it not for the quick transportation facilities afforded by the modern motor car.

Where Battery Care Stops And Tinkering Begins

One of the bits of advice that strike the eye of every man who runs through the numerous articles on motor care, or who studies an instruction book is that—"Don't tinker." Nearly all of them leave the reader in doubt as to just where proper care leaves off and tinkering begins.

The Willard Storage Battery Co. has service stations equipped to give adequate assistance to the car owner, and this leading manufacturer urges owners to take advantage of this service to lengthen the life of the battery.

C. D. Peet, sales manager of the Napoleon Motors company, Traverse City, Mich., reports that his company, while at the Chicago truck show, wrote more than \$1,000,000 worth of business, and could easily have doubled this had it been possible to handle the business.

Apperson Nebraska Firm Secures New Location

Announcement was made last week that the Apperson Nebraska Motor company had taken over the former Stutz location, 2526 Dodge street.

This is one of the recently constructed automobile buildings and in addition to providing ample room for service and display needs, it is sufficiently large for storing a certain number of cars. According to Charles Pewthers, the manager of the Apperson Motor company, the new quarters will enable them to carry out plans which have been under way for a considerable length of time.

Powell Salesmen Return

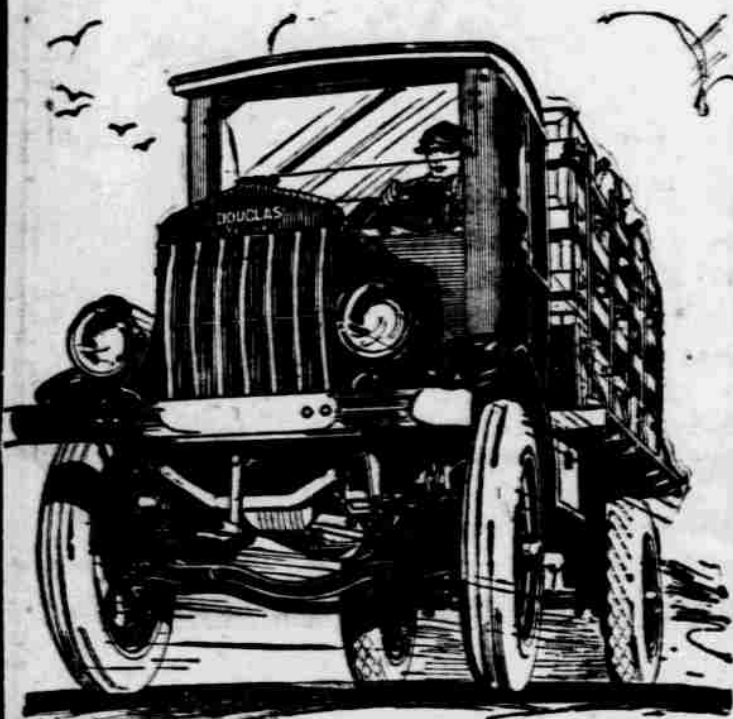
Thirty salesmen of the Powell Supply company have returned from a trip to Chicago, Toledo and Detroit, where they visited various factories and learned first-hand the

merits of auto supplies they sell. The crowd was in charge of J. W. Sherry, salesmanager.

Willys Overland Company To Increase Its Capital

The directors of the Willys-Overland company, it is understood, are considering increasing the capitalization of the company to provide increased facilities which will result in large savings to the Willys-Overland company, and at the same time permit of a greatly increased capacity to meet the remarkable demand for its product.

Having outgrown its home at East Forty-second street, New York, the National Automobile Chamber of Commerce plans to move on May 1 to the new Marlin-Rockwell building, Madison avenue and Forty-sixth street, where it will occupy the 14th and 15th floors.



Better Built to Answer Your Particular Hauling Needs

FOR the man who wants only the very best truck that his money can possibly buy, who wants that satisfied assurance that his truck will stand up and keep going, the Douglas Truck will meet his every exacting requirement. No matter what your hauling need may be, the Douglas will stand any test and measure up alongside any truck that is manufactured and offered on the market today.

Built of Standard Units

Every part that enters into the construction of the Douglas is nationally known and recognized as a standard unit. The following reliable names stand back of the Douglas—each one of them a good reason for Douglas quality and performance: Buda Engine; Fuller Clutch and Transmission; Arvac Tubular Drive Shaft; Torbenon Internal Gear Drive; Wisconsin Worm Drive; Timken Bearings throughout; Schebler Carburetor; Eisemann Magnet; Stewart Vacuum Tank; Ross Steering Gear.



Hand Made Throughout

All assembling is carefully done by hand. The workers, high grade experienced mechanics, who build and turn out Douglas Trucks, are proud of their accomplishments. Each of them is a stockholder in the corporation itself and it is to their own interest to be especially careful and conscientious and to construct in the most capable manner possible.

Thoroughly Tested

The Douglas is tested and tried for the particular road and weather conditions prevailing in this section. They have proven their ability to withstand heavy farm loads, bad weathers, soft dirt roads and other hindrances to easy travel.

Convenient Factory Location

The Douglas Factory is right here in the west where it can serve you in a better way. No delays, no waiting for trucks or necessary parts, which would otherwise require long transportation time.

Douglas Trucks are made in three sizes—1, 1 1/2, 2 1/2-ton capacity. Continued with night and day service to keep working for you. Further proof of Douglas reliability is evidenced by the unusual letters we are continually receiving from satisfied Douglas users. Wm. J. Brennan, President of the Crosby-Kopitz-Cassey Lumber Co. of Omaha, says:

"We have been using two of your 1 1/2-ton Douglas Trucks and one of your 2 1/2-ton trucks for the past year, and feel that for economy in delivering our goods, in consumption of gas and oil, and up-keep, they figure right down to the minimum. In proof of what we think of your truck we are now placing an order for another 1 1/2-ton Douglas Truck job. We also recommend it to any truck buyer who wants a good, strong, economical truck."

Send for further literature and specifications in detail. We want dealers in all localities. Write or wire us.

Douglas Motors Corporation
George Christopher, President
Omaha, Nebraska

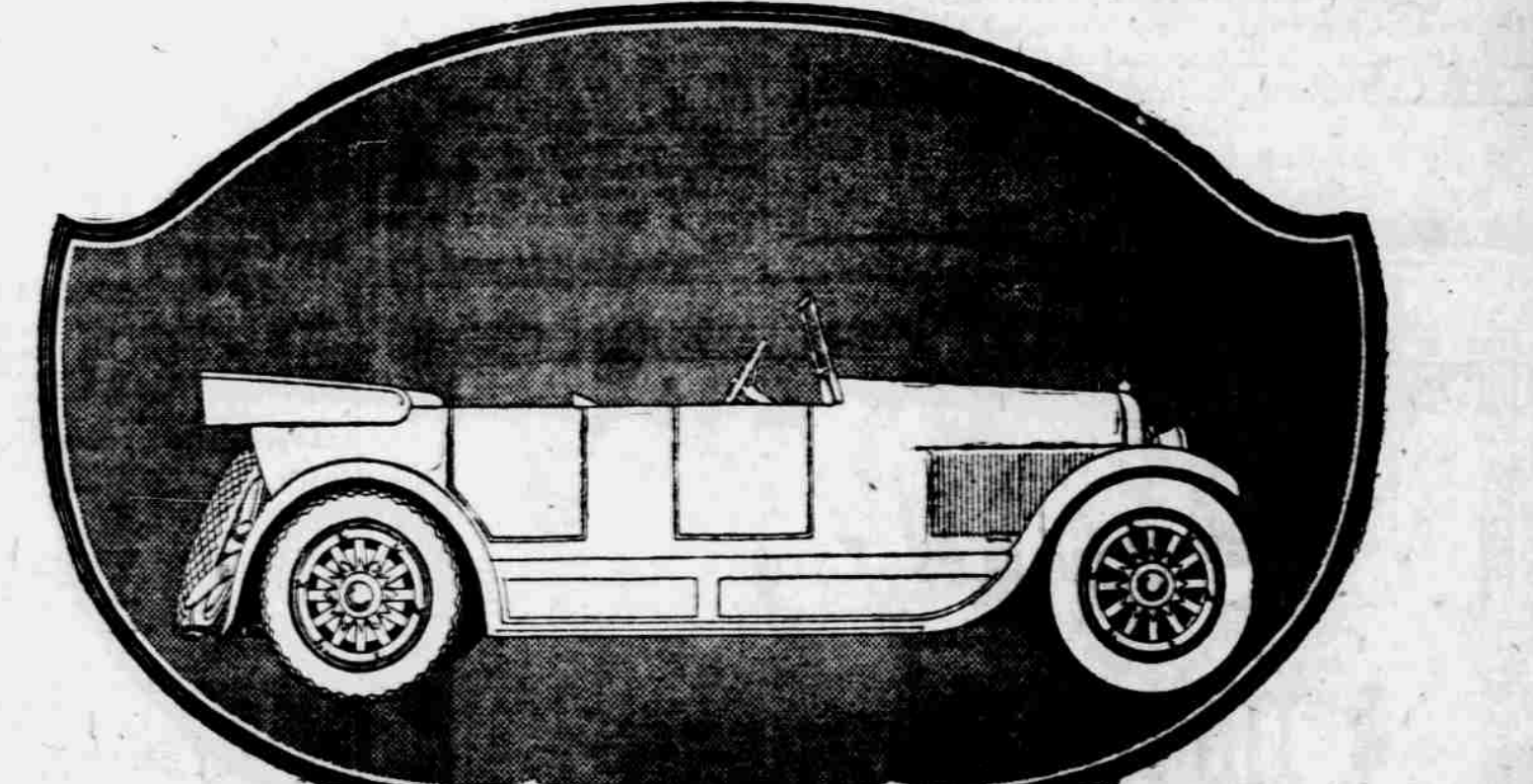
GARAGE
Will build garage near 24th and Leavenworth St. for good tenant. Ground size 75x280 feet, facing on two streets. For fuller particulars see
BIRKETT & COMPANY,
250 Bee Bldg. Doug. 633.



ALL you have to do to know that you are rid of re-insulation trouble for good is to make sure that you get a Still Better Willard with the "Thread Rubber" Trade Mark stamped on the side of the box.

Nebraska Storage Battery Co.

20th and Harney Sts. Phone Tyler 2920



The JORDAN Silhouette

TO the dominant quality of balance,—the secret of Jordan reliability and service,—has been added many detailed improvements. A new series of custom style enclosed bodies of the modern, square-cornered type. Touring bodies a little more slender with new French angle at dash. Perfectly straight top edge without the slightest bevel. New type, deep-section, full crown fenders. Hand-buffed, narrow-pleated French-leather. European type tilted cushions, soft and deep. All-aluminum body—no rumbles, ripples, or rust. Broad doors, describing a complete semi-circle when open.

Peterson Motor Car Company
2427 Farnam Street Distributors Omaha, Neb.
JORDAN MOTOR CAR COMPANY, Inc., Cleveland, Ohio