

VICTROLA RECORDS
FACTORY RECORDS
BURGESS-NASH COMPANY

DRIVE IT YOURSELF
RENT-A-FORD
NEBRASKA SERVICE GARAGE
1212 FARNAM STREET, OMAHA, NEB.

Driven Wild by Eczema

"The leg was like a piece of liver from the liver to the ankle and burned continually," writes H. Moran of Venice, California. "From the first application, D. D. D. stopped the itching, and after using three bottles the trouble disappeared and it never came back."

D. D. D.
THE Lotion for Skin Disease

Five Sherman & McKim Bldg. Omaha, Neb.

Keep Your Skin Pores Active and Healthy With Cuticura Soap

See Cuticura Tablets, etc. everywhere. For samples, address: Cuticura Laboratories, Dept. 2, Malden, Mass.

WAR ON I. W. W. IS WAGED OVER WESTERN STATES

Federal Investigator in Omaha to Outline Plan of Attack—Awaiting Action of Congress.

War will be waged on I. W. W. organizations throughout western states as soon as congress adopts legislation authorizing deportation of all alien "wobblies," declares William J. Flynn, head of the United States bureau of investigation, here yesterday for a conference with J. H. Daly, Omaha special agent for the bureau.

No further steps against Omaha and Nebraska "reds" are likely to be taken until after adoption of this legislation, he said.

Deportations, and relentless pursuit by federal and state authorities are having a salutary effect in minimizing radical activities in all sections of the country, he declared.

Mr. Flynn is returning to Washington, following a tour of western states and a series of conferences with department representatives regarding measures taken to suppress radicalism.

"I find throughout the nation steps already taken by federal and state officials have minimized the trend toward radicalism, which for a time threatened to assume dangerous proportions," he said. "There is nothing at all alarming in the present situation in Nebraska, al-

though, of course, all moves of radicals are going to be watched carefully.

"In the west I find only small and comparatively unimportant organizations of the communist and Russian soviet cliques, which worried us for a time in eastern states. The I. W. W. form the only possible menace in western states. It will be possible to deal with them forcefully when congress passes legislation authorizing deportation of their alien members, who form the backbone of the organization."

Mr. Flynn pointed out 900 alien radicals already had been deported and 1,000 were now awaiting deportation and another 1,000 awaiting examination by immigration officials.

He was accompanied on his western trip by J. P. McCarty, secretary of the bureau of investigation, and James Dunn, special investigator.

Success Will Come If Highjackers Persevere, Mr. Savidge Declares

Highjackers of Omaha will be made the subject of a sermon by Rev. Charles W. Savidge at the People's church next Sunday. Valuable advice to friends and companions of the raiders who looted Rev. Mr. Savidge's basement Monday night will be delivered from the pulpit, according to the minister.

"Their unsuccessful attack on my home leads me to extend the following exhortation," said Rev. Mr. Savidge. "If they will visit the homes of all the ministers, priests and bishops in Omaha, they will be sure to find that for which they seek."

"If the highjackers will just persevere, they will yet attain success," he concluded.

City Engineer Tells Why Omaha Spurns Bitulithic

Patented Pavement Not Included in Municipal Specifications Because "It Offers No Opportunity for Competition"—Says Awarded County Contract Too High.

John A. Bruce, city engineer, stated yesterday that bitulithic paving, the kind approved by the county commissioners for county road paving, is not included in the city's specifications used by contractors, because it is a patented paving and offers no opportunity for wide competition.

He also asserted that the bids offered on bitulithic carry a large margin of promotion expense. He offered the following statement on the subject:

"I do not wish to be understood as saying that bitulithic is not a desirable paving when properly laid, but my criticism is that the county is paying too much for this class of paving when it pays \$4.35 a yard.

Same Materials Used.

"Our paving specifications do not include bitulithic because this is a patent surface and only one or two contractors in a state have the inside track on this form of paving. We have in our specifications a class of paving known as asphaltic concrete, which is practically as serviceable as bitulithic and is as near as possible to that paving without infringing on the patent.

"The materials used in asphaltic concrete and bitulithic are the same, except that in the case of bitulithic mixture the sizes of stone used with asphaltic cement range from one-

inch to sand, while in asphaltic concrete mixture the stone ranges from half an inch to sand. The bitulithic mixture is produced according to a scientific method which constitutes the patent.

"Asphaltic concrete can be laid for nearly \$1 per yard less, as our recent bids will show. On February 10 our highest bid on asphaltic concrete was \$3.34 and on February 17 it was \$3.35.

County Paying too Much.

"No bitulithic paving has been laid in Omaha and the only place where it has been laid in Nebraska, to my best information, was at Columbus, Neb., about three years ago. William Horrabin of Des Moines and James Horrabin of Iowa City control the Iowa field and I understand that the Allied Contractors have the Nebraska field. The patent is owned by the Warren Bros. Co. of Massachusetts.

"There is a general condition that only one or two contractors in a state are favored by the Warren people.

"I contend that the county is paying too much for this pavement when it pays \$4.35 per yard. There is too much of a margin for promotion expense. I do not know how that promotion expense is used."

Spain exports about 90 per cent of the cork that it produces.

Story of Esther Acted At Purim Celebration

The Biblical story of Esther was acted in pantomime at the Purim celebration of the Young Men's Hebrew association in the Lyric building last night. "Megillah," a feature of the festival observance, was read in English instead of Hebrew.

The story was dramatized by S. H. Schaefer, director of the Jewish Welfare federation. He was assisted by Misses Rosemary and Clara Antin. Ethel Adler appeared as Queen Esther, Eva Weiner as Vashti and Belle Seigel as Zeresh.

Edward Solig took the part of King Ahasuerus, Fred White of Mordecai, Israel Goodman of Haman, Sam Green and Max Janger, chamberlains, and Edwin Altschuler the scribe. Mrs. B. R. Roasberg was dramatic coach, Harry Brawiroff supplied the music and Miss Jessie Rosenstock had charge of the scenery and costumes.

Phillips Confirmed.

Washington, March 3.—The senate has confirmed the nomination of William Phillips, assistant secretary of state, to be minister to The Netherlands, and Luxembourg.

Appear At Your Best—Instantly

If you receive a sudden call or an unexpected invitation you can feel confident of always appearing at your best. In but a few moments it renders to your skin a wonderfully pure, soft complexion that is beyond comparison.

Gourauds Oriental Cream

50c and 75c. For sale by F. J. Hopkins & Son, New York.

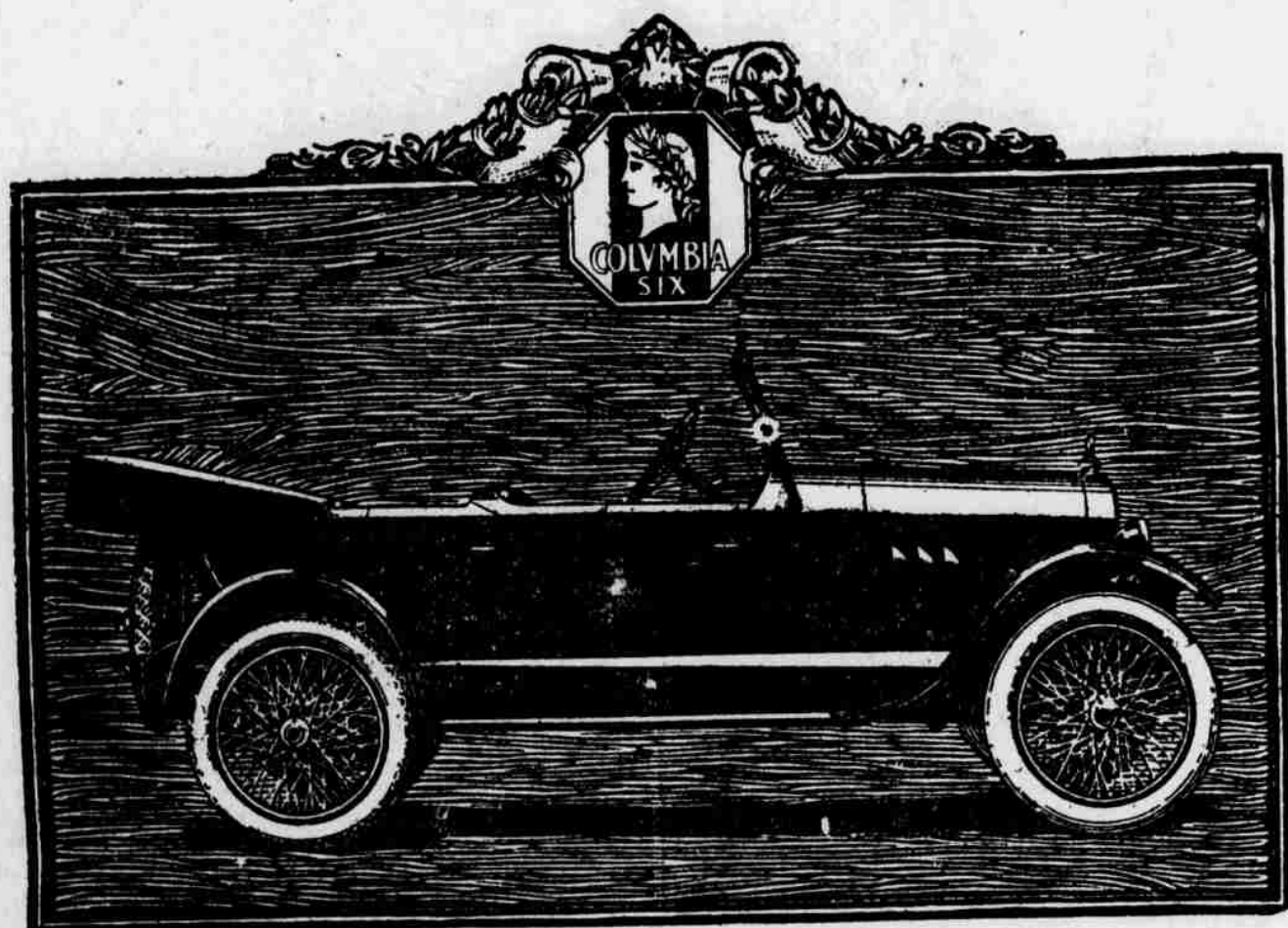
Omaha Honey-Comb Ford Radiators

The Superior Type for Ford Cars

Dealers Prepare for Spring Business. Buy Radiators of Superior Quality and Construction. They Repeat Sales.

Omaha Cores for Replacement in Any Make of Radiators, at a Saving of 30 to 50%. 45% More Cooling Practically Freeze Proof

Omaha Auto Radiator Manufacturing Co.
Manufacturers Exclusively of Auto Radiators and Cores for Replacement.
1819-21 Cuming St., Omaha, Neb.



Why You Ought to Stop at the Columbia Six Exhibit

Any car which can rise to the position of leadership today occupied by the Columbia Six, among the two or three most popular and fastest selling cars in the middle price field, must have features worthy of your attention.

Show visitors this year must choose the exhibits most worth while. And in selecting the exhibits most worthy of your attention, it will pay you to include the Columbia Six.

The beauty of Columbia Six body designs, the exquisite harmony of the furnishings and fittings, prove a delight to every motor car connoisseur. You will want to see them.

Those mechanically inclined will find the Columbia exhibit equally interesting.

You will want to see the automatic thermostatically controlled radiator shutters, which are today recognized by automotive engineers generally as being one of the most important motor car improvements within a decade. The Columbia Motors Company was the pioneer in adopting them.

Time spent at the Columbia Exhibit will be time well spent.

- The Columbia Six Exhibit will include
- The Five-Passenger Touring Model
 - The Four-Passenger Sport Model
 - The Special Sport Model
 - The Two-Passenger Roadster
 - The Four-Passenger Coupe and the Sedan

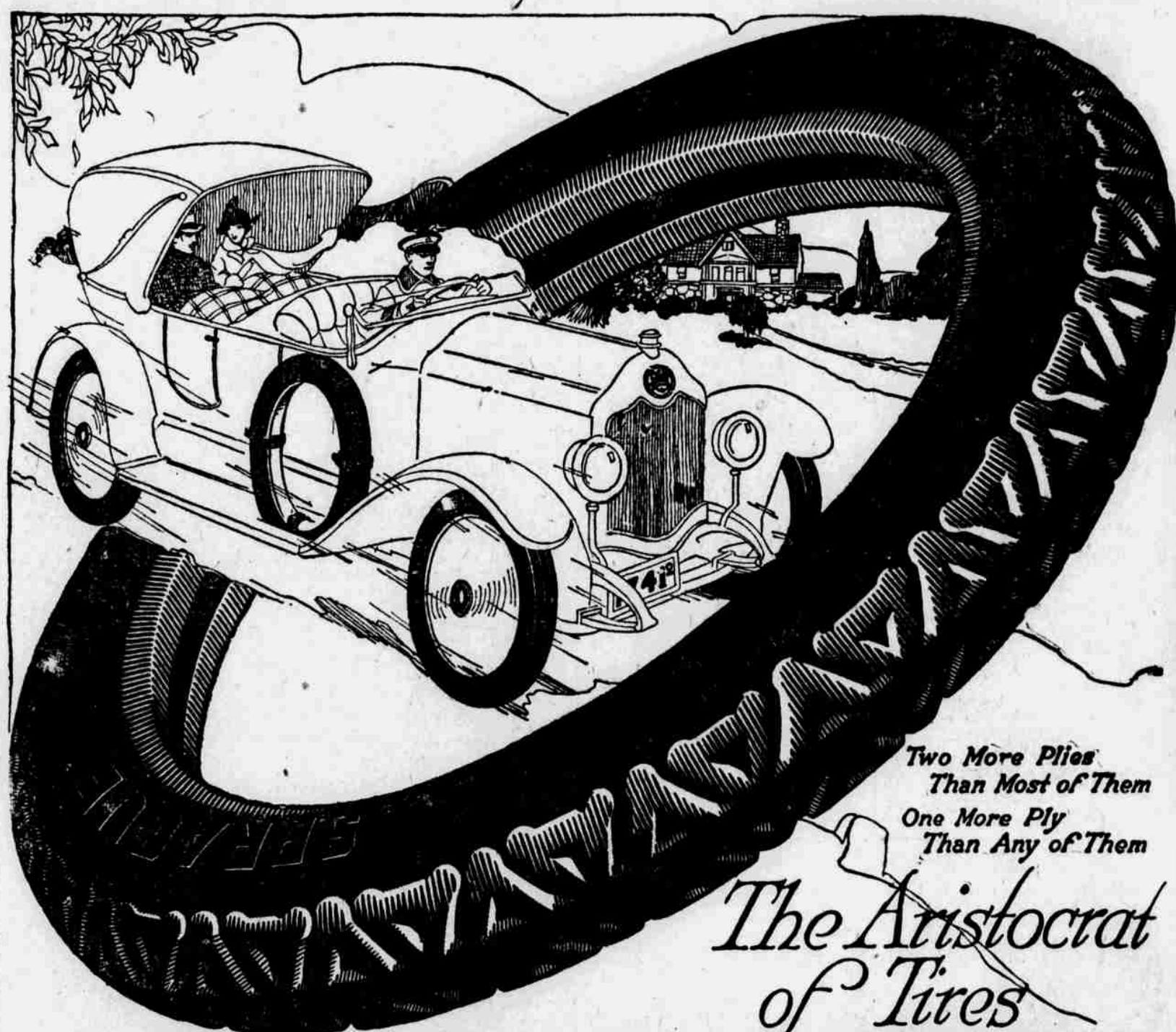
Peterson Motor Car Company

DISTRIBUTORS

2427 Farnam Street

Omaha, Neb.

Columbia Six



Two More Plies Than Most of Them
One More Ply Than Any of Them

The Aristocrat of Tires

SPRAGUE TIRES

Are Just as Handsome as They are Strong and Enduring

Big, jet black, with sturdy, triangular non-skid tread or deep, true, rib tread, they make the smartest car look smarter still.

You'll approve instantly the good looks and the resilient, easy-riding qualities of these tires and, as you know them better, you'll like them even more for their faithful, satisfactory service.

Endurance Lies Within the Plies

SPRAGUE TIRES render you this service because they are built to give the *most miles* and the *least annoyance* possible from rubber and fabric. They have more plies, of the highest quality fabric—their sidewalls, tread and cushion have more pure rubber. They are carefully made, by expert makers, and every one rigidly inspected. They must be perfect.

SPRAGUES cost a little more than cheaply made tires, but they are far cheaper in the end. Because of their better materials and better workmanship, they give you not only more satisfactory wear but LOWER COST PER MILE.

This shows the difference in number of plies of fabric used by various tire builders:

Size	Ply in SPRAGUE Tires	Ply in Other Tires
3 1/2-inch	6	4-5
4-inch	7	5-6
4 1/2-inch	8	6
5-inch	8	7

—and every SPRAGUE ply is 171-oz. fabric, the strongest known

Sprague Double-Extra-Ply Tires Are Sold Under a 7,500-Mile Guarantee.

VISIT THE SPRAGUE MILL any time during Auto Week and see Sprague Double-Extra-Ply Tires and Sprague Laminated Tubes in the making.

Take any northbound car on Sixteenth street, get off at Eighteenth and Cuming streets. Only nine blocks from the center of the retail district.

Sprague Tire & Rubber Co., Omaha

DEALERS—Let us tell you about the SPRAGUE PLAN to help you sell more tires and make more money from your tire business

