

# The Park Roller Drive Tractors

## Revolutionize Tractor Industry

**No Gears--No Transmission**

**No Clutch--No Differential--No Fan Belt**

All the above mentioned parts of the present-day tractor sooner or later cause trouble, but are entirely eliminated in the Park Roller Drive Tractor.

All the above mentioned parts of the present-day tractor sooner or later cause trouble, but they are entirely eliminated in the Park Roller Drive Tractor.

MANUFACTURED IN OMAHA

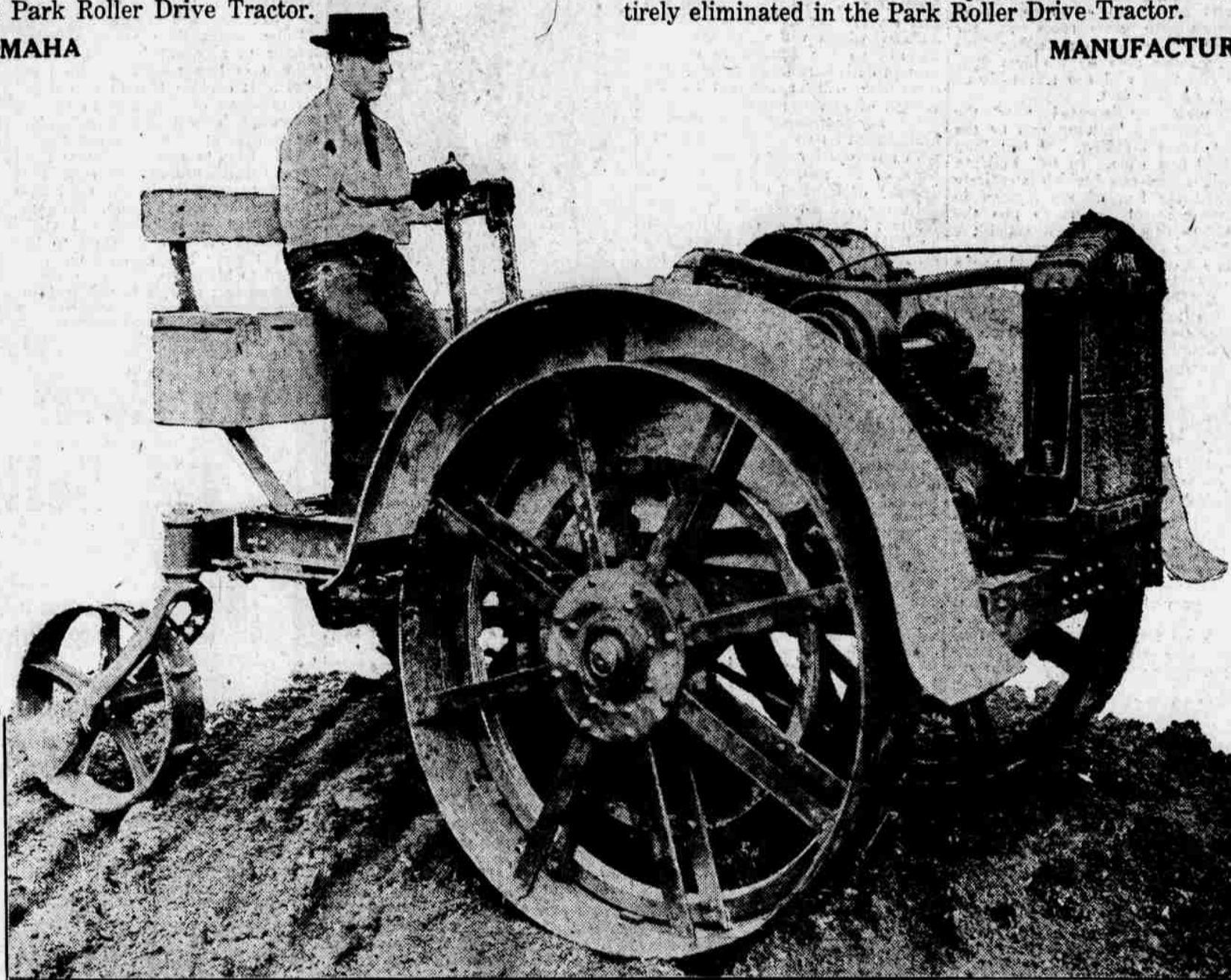
MANUFACTURED IN OMAHA

### Prices and Terms of

## Park Tractors

The retail price of the Park Tractor is \$1,695.00, f. o. b. Omaha. Terms: 10% cash payment with order and balance eight draft bill of lading, or satisfactory credit arrangements made with the company.

The Park Tractor will save any farmer more than the cost of the tractor annually, for it is an all-purpose machine, can do anything horses can do, and many things horses cannot do. Ready to work night or day. There is nothing to break, nothing to get out of order if you take the same care of tractor that you do of your horses.



### General Specifications Subject to Change

- POWER—Buda HTU Motor, 4 1/2 x 5 1/2 (SAE rating, 29 HP), 4 cylinder, heavy duty, using gasoline or kerosene.
- SPEEDS—One forward, one reverse, from 2 to 4 miles per hour.
- WEIGHT—About 3,200 pounds.
- STEERING—Two Levers—Own power.
- IGNITION—Berling High Tension Magneto with impulse starter.
- LUBRICATION—Force Feed.
- AIR CLEANER—Park Oil Air Strainer.
- RADIATOR—Own design, large and ample, circulating water system.
- CARBURETOR—Zenith, 1 1/4 inches, kerosene or gasoline.
- BEARINGS—Hyatt and S-K-F, and annular.
- SEAT—Wide spring seat, cushioned.
- TOOL BOX—Width of seat, ample capacity.
- BELT PULLEY—Placed high on top and front of frame, pulley 14-inch diam., 8-inch face. Ample speed and power.
- CAPACITY—Two 14-inch plows in all soils.
- POWER TRANSMISSION—Through chain to roller drive.
- FUEL CAPACITY—22-gallon tank, sufficient.
- WIDTH OVER ALL—77 inches.
- LENGTH OVER ALL—117 inches.
- CLEARANCE—24 inches.
- DRIVE WHEELS—50x12 inches.
- CASTER WHEELS—20x6 inches.
- LUGS—Vacuum tread. Patented—will not pack on any soil.
- FINAL DRIVE—Positive Rollers, meshing with rings, under side of rims, forward and reverse.

## Adaptability of Park Tractors

Park Tractors for the past four years have been used and tested in every kind of soil in various parts of the United States—namely, Utah, Texas, Kansas, Ohio, Minnesota, Nebraska and the Missouri river bottom lands of Iowa. It works with absolute success on hillsides as well as on level ground. The Park Tractor adapts itself to any condition where farm machinery will do the work. The Park Tractor turns in less space than the width of a freight car.

### Driving Principle of Park Tractors

The driving principle underlying the efficiency of the Park Tractor is the same as is seen every day when a locomotive draws its load on a railroad track. The Park Tractor has no Gears, Clutches, Transmissions, Universals or Differentials and no Fan Belt. It is really "fool proof" and has none of the parts which cause trouble and delay.

### Speed of Park Tractors

Park Tractors will travel at any speed, limited only by the speed of the motor. We govern, however, the working speed three to four miles per hour, handling two or three 14-inch plows in the heaviest gumbo, and guarantee a satisfactory depth of plowing.

### Weight of Park Tractor

The Park Tractor weighs about 3,200 pounds, and when using our patented vacuum tread does not pack the soil as much as the weight of a 1,200-pound horse.

### Ease of Handling Park Tractors

Any farmer's son of 16 years of age can handle the Park Tractor efficiently and his work will compare favorably with the work done by the usual tractor selling up to \$3,300.

### Cost of Fuel for Park Tractor

The motor used in the Park Tractor is adapted to the use of either kerosene or gasoline fuel, and the cost of fuel per acre is very small for the amount of work done under any plowing conditions.

### Farmers--Contractors--County Commissioners

#### NOTE—THE PARK TRACTOR

Owing to the simplicity of construction of the Park Tractor, it is naturally adapted for use in any kind of stationary or traction power work that is required in agriculture, such as handling with ease two or three 14-inch plows, discing, listing, pulling harvesting machinery, fertilizer spreaders, stump pulling, belt work, including threshing and ensilage cutting, and is the most practical road grading and dragging tractor in use today.

### Special Information to Park Truck Users

Troubles ended, no days lost from broken parts. Nothing to break. Nothing to get out of order.

We sell and warrant PARK TRACTOR parts and will replace any parts that break from defective workmanship free of charge, demonstrating to Park Tractor purchasers that we have eliminated time lost and cost of parts broken in other tractors. **WHY?** Because we have No Gears, No Clutch, No Transmission, No Differentials, No Fan Belt.

If You Visit the Auto Show Come in and See Us

If You Visit the Auto Show Come in and See Us

### Omaha Park Tractor Co. Omaha, Neb.

You may send me, without obligation on my part, literature relative to the Park Tractor, and quote special introductory offer to me as one of the first ten farmers to purchase Park Tractors in my county.

Name .....

Address .....

R. R. No. ....

I farm ..... acres

O. B.—2-29.

## Special Discount to First 10 Farmers in Each County

Any farmer purchasing a Park Tractor previous to the time the territory in which he resides is assigned to a dealer, will receive a special trade discount—for advertising purposes—but not more than ten Park Tractors will be sold in any one county on this basis, so "first come, first served."

### Buy Your Tractor Now for Spring Plowing

We are prepared to make deliveries of Park Tractors by March 1, 1920, and we are making daily demonstrations of the power and adaptability of the Park Tractors at Omaha, Nebraska, and invite every interested person to call at our salesroom and observe the wonderful manner in which the Park Tractor serves mankind.

**"No Clutch to Slip, No Gears to Strip"---"Fool Proof"**

### Distributors' and Dealers' COUPON

I am interested to learn more about the Park Tractor. Send literature and distributor's or dealer's proposition to me.

Name .....

Address .....

Territory desired by me .....

O. B.—2-29.

# OMAHA PARK TRACTOR CO.

Office and Salesroom: 1409 Harney Street

OMAHA, NEBRASKA

Factory: 48th and Leavenworth Streets