

### CLOSED BODIES FOR ALL CARS TO BE THE DEMAND

#### Apperson Brothers Forecast The Future With 16 Types of Closed Auto Bodies.

That the era of the enclosed type of motor car is close at hand is rather generally admitted by automobile manufacturers.

This year finds the Apperson company of Kokomo, Ind., on the market with a line of enclosed jobs from which the purchaser can select very nearly any type to suit his particular fancy.

In a handsome booklet dealing entirely with Apperson motor coach work Apperson brothers set forth some fine examples of motor coach making.

#### Sixteen Different Bodies.

From the three and four-passenger coupes up to the luxurious limousines, broughams, salamanicas and landaulets—all of these enclosed types of Appersons—despeak consideration. In all, there are 16 different bodies illustrated in this new booklet.

Speaking the other day in Chicago of the adoption of a policy which will permit the building of so many enclosed types, T. E. Jarrard, vice president of the Apperson Bros. Automobile company, explained the action of the Apperson brothers as follows:

#### Demand Closed Cars.

"Some time back our company saw that the demand for enclosed types was healthily increasing. It could be seen that the enclosed car was coming more and more into popular demand. At first, of course, the enclosed bodies were thought of only for winter use, but as their general adaptability for all-year service was learned, and as improvements simplifying their construction were made, the public came to see that the enclosed type of body is the ideal one for constant all-year driving. Apperson Bros. therefore are going in heavily on production of enclosed cars."

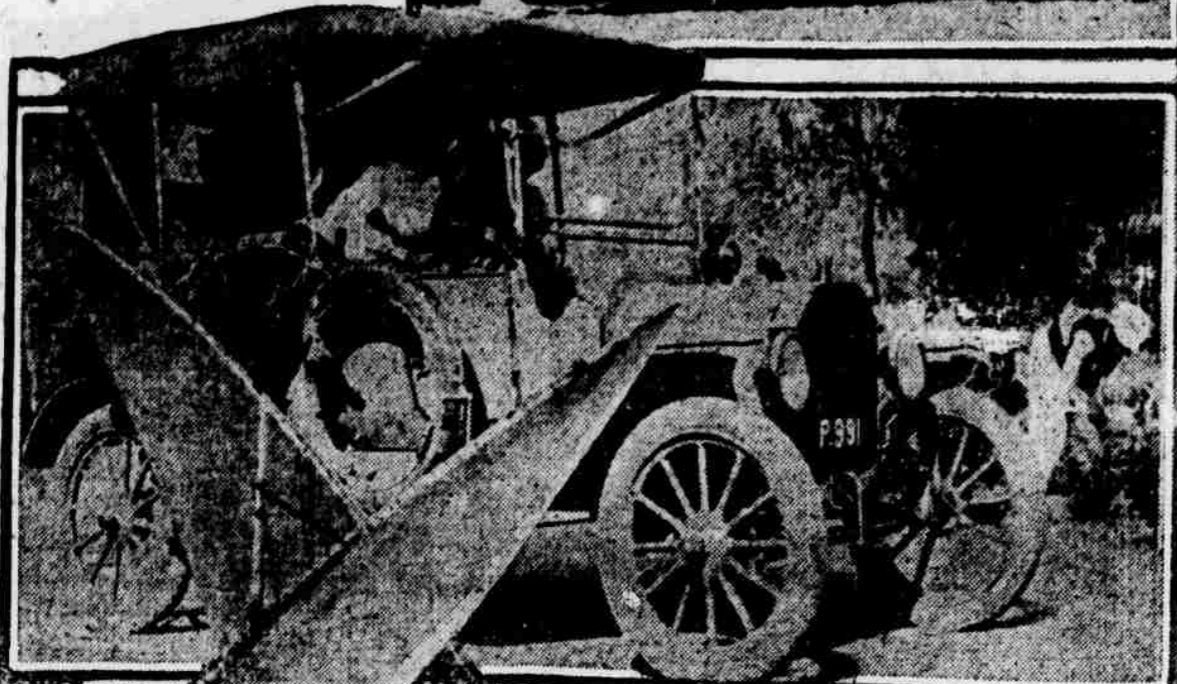
### Gilinsky Co. to Hold Open House and Show Autos and Airplanes

J. F. Gilinsky, manager of the Gilinsky Motor and Tire company, announces the company will hold in connection with auto show week an official opening of its new sales and service rooms at 25-27 North Main street, Council Bluffs. The public is invited to see the big line of new and used cars, tires and motor accessories.

An exhibit of airplanes and airplane parts will form one of the features of the opening. The Gilinsky company, it is announced, is the first

### Modern Pagans Are Getting the Gospel Carried to Their Doors by Jitneys

Here is the old fashioned mule car that the missionaries to Egypt used to depend upon before the modern flivver was called to the aid of the church in the foreign fields. In the middle is a jitney missionary car, loaded with Bibles and baggage for a week's jaunt to the native village. Below is a missionary boat, "The Witness," moored in the Nile. Although these boats are still used motor boats are replacing them.



#### Just a Few Odd Facts Of Interest to Autoists

When the gasoline tank is emptied automobiles nearly always stop running.

A native of Java has invented an automobile that is cranked the same as a coffee mill.

Pedestrians' licenses are not required in the United States, but there is no reason why they should not be.

Rear seats are being designed for 1920 models which do not fit so snugly across the shoulders.

#### Racing Champs Choose Cole Aero-Eight to Drive

Two of the world's most renowned automobile race drivers have selected the Cole Aero-Eight for their personal use.

One of these is Jules Goux, famous French driver and automotive engineer, the first foreign driver to participate in the 500-mile races at the Indianapolis motor speedway. The other is Howard Wilcox, who won the Liberty sweepstakes at the Indianapolis track last year.

Council Bluffs firm to take up airplane sales. Lieutenant Neilsen, Council Bluffs aviator, will demonstrate planes and furnish instructions in flying. Airplane parts will be carried as a regular line in the Gilinsky stock.

Manager Gilinsky, several years ago, started as a curb dealer in used cars in Council Bluffs. Later he leased a store room and was conducting a rapidly growing business

in new and used cars when the United States declared war on Germany. He enlisted and served as instructor in the army motor school at Kansas City until after the armistice was signed. Following his return to Council Bluffs he resumed business in the Central building, but found space there insufficient and leased and remodeled the building where his new salesrooms are located.

### HAYNES AUTO CO. OUTPUT WILL BE 15,000 A YEAR

#### Beautiful Models to Be Shown In Omaha Have Radical Differences From Other Cars.

The capacity output of the Haynes Automobile company, Kokomo, Ind., has been increased to 15,000 cars annually with the completion of a large new factory building and drop forge plant, according to an announcement by A. G. Seiberling, vice president and general manager of the company.

The new factory building is 500 feet long, 150 feet wide and four stories in height, making an additional factory space of 320,000 square feet. It is the largest structure of its kind in the state of Indiana. It is of modern fireproof steel and concrete construction and will be used for assembling, trimming, painting and storage. The new forge shop has a floor space of 12,000 square feet. A 750-horsepower plant heats the new buildings.

"This increased manufacturing space will be efficiently used to help meet the worldwide demand for Haynes character cars," states Mr. Seiberling, "and even with this expansion, the demand for Haynes cars will far exceed the output."

Haynes 1920 cars in three models, the roadster, seven-passenger touring and coupe, will be exhibited at the Omaha Automobile show by the Wenger Motor company, 2555 Farnam street.

These and other Haynes models for this year present refinements bound to increase the already extensive popularity of Haynes cars, declares E. C. Wenger. The new sedan and coupe models, in particular, he says, show radical differences from other closed car models that owners and prospective owners will appreciate.

There will be a large entry list for the First National Motor Truck Reliability tour. Interviews at the New York national automobile show were so favorable and so numerous that all doubts were removed. Makers believe that the "Run Around the Money Belt" starting out of Omaha in June will traverse a region in which the great truck selling of the future will be done—the farming districts of the middle west.



**MOON**  
Buy Moon Closed Car Comfort

Own a car which is comfortable every month in the year. Moon manufacture builds elegant, luxurious and comfortable motor cars at prices which are within the bounds of reason.

The interior furnishing and equipment of the Moon Sedan and Coupe are unquestionably correct. Their design is delightfully modern—the large, wide doors and all coach work as carefully finished as a fine, old grandfather's clock.

Driven by that famous, flexible and light Red-Seal, Moon-Continental Motor—these models are now on sale. Make an early appointment to see their surprising value for yourself.

**C. J. DUTTON AUTOMOTIVE CO.**  
2056-58 Farnam St. Omaha.

Exhibit at Auto Show  
"DEAL WITH DUTTON"

**MOON**  
MODERN MOTOR CARS

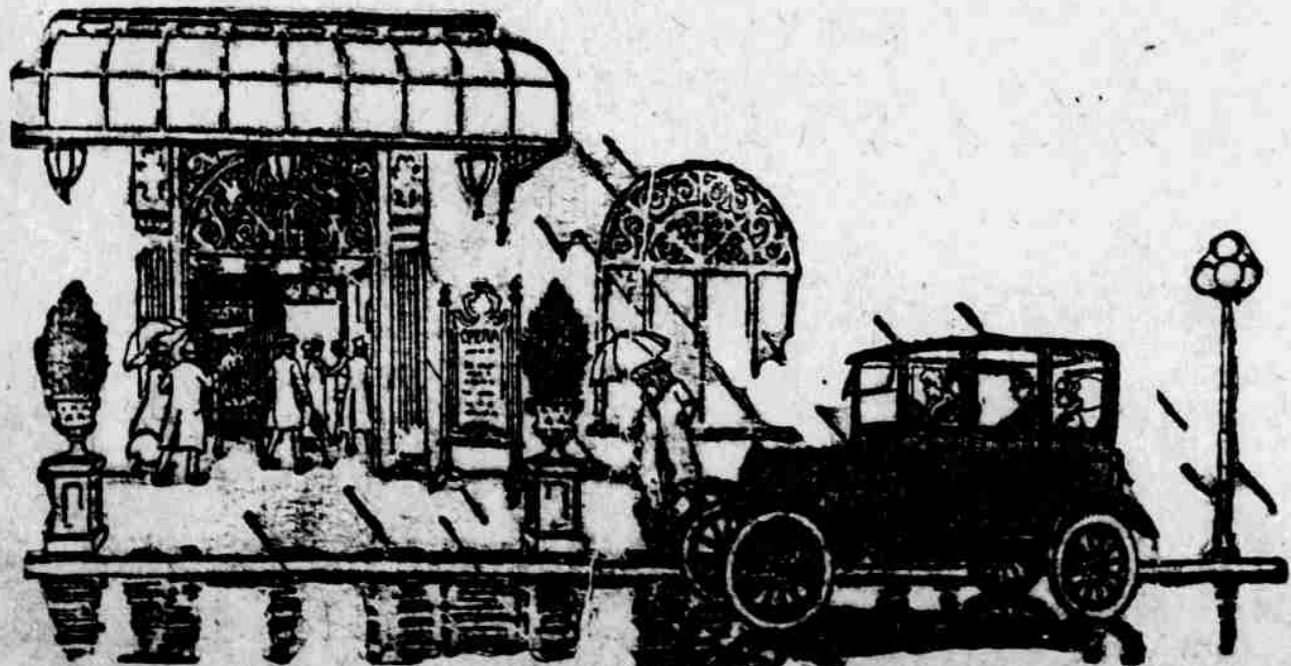
BEE WANT ADS ARE BUSINESS GETTERS

# Ford

## THE UNIVERSAL CAR

The Ford sedan is the favorite family car. Seats five comfortably. While an enclosed car with a permanent top, it may, in a minute, be changed to a most delightful open car with always a top protecting against the sun. In inclement weather, it is a closed car, dust-proof, water-proof, cold-proof. Finely upholstered. Equipped with demountable rims with 3 1/2-inch tires, tire carrier and an electric starting and lighting system. A real family car. Anybody can safely drive it. It has all the conveniences of an electric car, with the economy which goes with Ford cars, low cost of purchase price, small cost of operation and maintenance. Leave your order with any of the dealers listed below.

- M'CAFFREY MOTOR COMPANY 15th and Jackson Sts.
- SAMPLE-HART MOTOR COMPANY 18th and Burt Sts.
- UNIVERSAL MOTOR COMPANY 2562 Leavenworth St.
- C. E. PAULSON MOTOR COMPANY 20th and Ames Ave.
- ADKINS MOTOR COMPANY 4911 So. 24th St.



### What you will see in the Liberty

All of the distinguishing characteristics of the original are retained in the Liberty which will be displayed to you at the Automobile show.

The car is best described, perhaps, as a development and an unfolding of the basic beauty which is inherent in Liberty design. You are given a freshened appreciation of the grace and symmetry of Liberty lines, and of the harmony which characterizes the car in its entirety.

In the same way and to the same degree, the Liberty has improved upon itself in details of comfort and convenience.

That the engineering practice and the performance qualities have been smoothed and refined, goes without saying. You will instantly recognize that the well known difference in the way the Liberty rides and drives is more delightfully marked than ever.

OMAHA LIBERTY AUTO CO.  
1914-16 Douglas St.  
LIBERTY SALES CO.  
Lincoln, Neb.



AT THE SHOW MARCH 1ST TO 6TH 2-ANNEX

# LIBERTY SIX