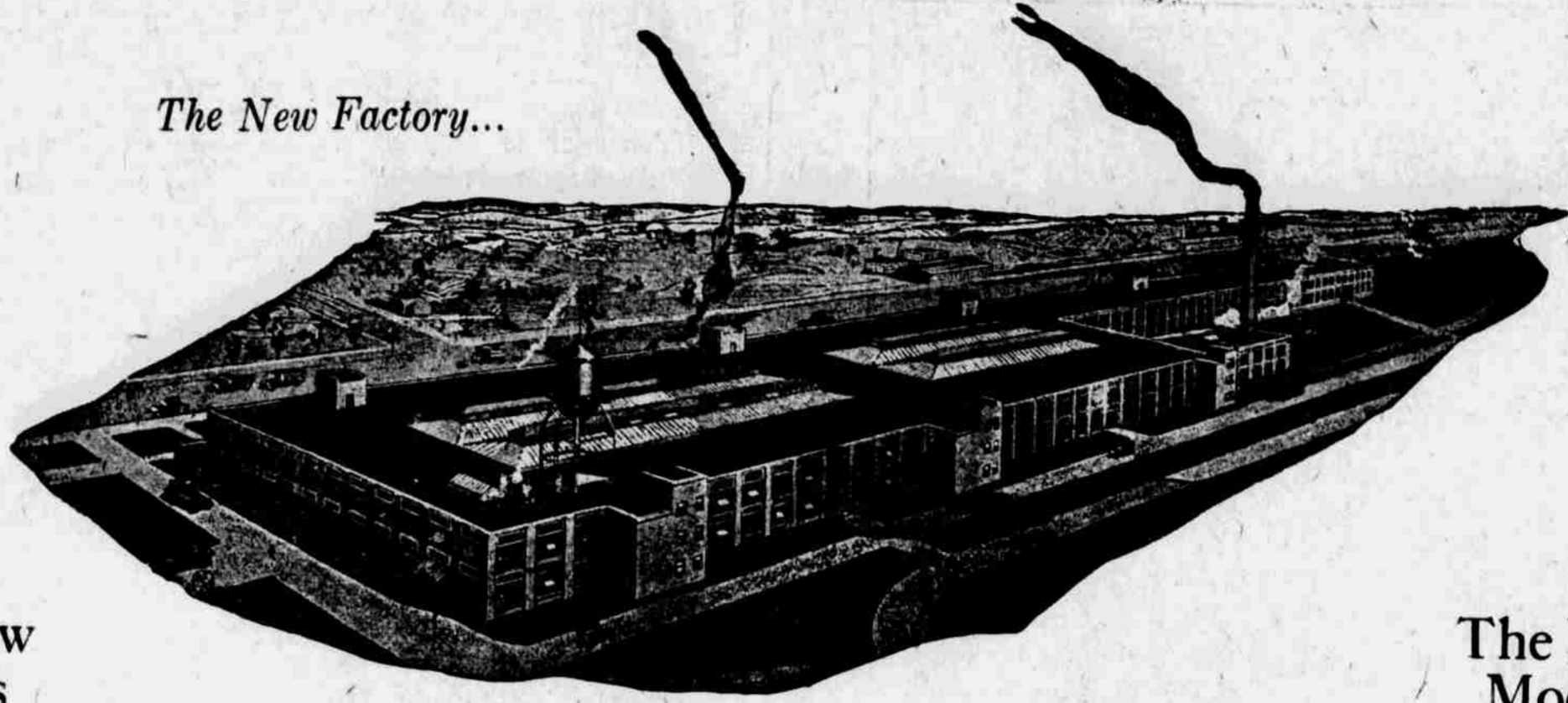




The New Factory...

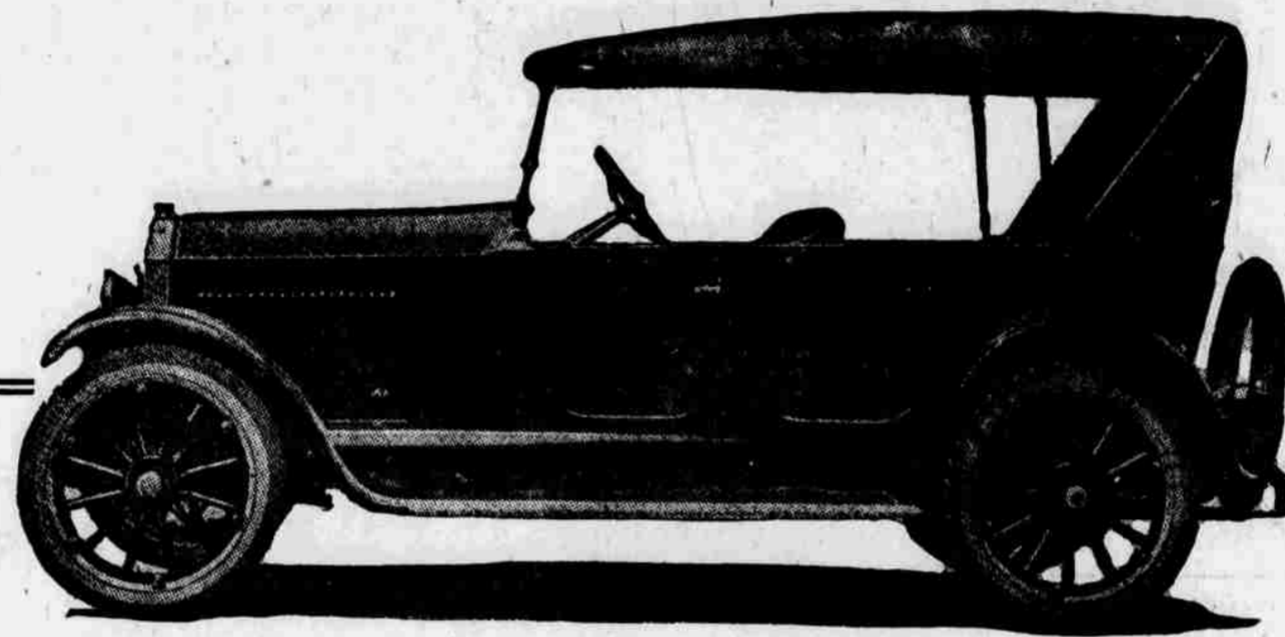


The New Models

Exhibited in the Annex...

The New Models

Exhibited in the Annex...



Scripps-Booth

THE even greater worthiness of the new Scripps-Booth models—designed, machined and built in the new factory—evidences the advantages which result from ideal production facilities and close affiliations with many of the largest motor car builders.

These new cars are distinctively Scripps-Booth in design, comparing in appearance with the finest motor cars—low, straight-lined and lustrously finished in a variety of colors. Their appointments include many unusual features found only in the Scripps-Booth models.

Real comfort is obtained by deep upholstery, extra long, wide springs and a wheel-base of increased length to give easy riding qualities, yet to provide for a short turning radius. Scientific construction with an even distribution of weight gives these models strength without bulk and road steadiness without excessive weight.

The Scripps-Booth six-cylinder valve-in-head motor develops ample power for all conditions—flexibility for congested traffic, with speed and hill climbing ability to meet all requirements.

The new SCRIPPS-BOOTH factory is one of the most modern and completely equipped automobile plants. It is located on a forty-acre tract and comprises more than 360,000 square feet of floor space. All departments are contained within this mammoth building.

HANSON & TYLER AUTO CO.

JOE ELFRED, *Mgr.*

2514 Farnam St. Omaha, Neb. Phone Tyler 1368

FORT DODGE SIOUX CITY DES MOINES WEBSTER CITY, IA. SIOUX FALLS, S. D. OMAHA, NEB.

