

# FIGHT CONTRACT FOR BITULITHIC ROAD PAVEMENT

Representatives of Omaha Civic Organizations Threaten Legal Action Against County Awards.

"It's the rottenest deal that was ever put over on the people of Douglas county, and we are now preparing to take action, in the courts if necessary, to stop it."

These were the indignant words of W. B. Check yesterday, regarding the action of the board of Douglas county commissioners, in awarding a contract last Tuesday for paving the Lincoln highway, from a point half way between Elkhorn and Waterloo to the Dodge county line with "bitulithic," a composition paving.

A committee headed by Mr. Check is hard at work with Francis A. Brogan, president of the Chamber of Commerce and prominent attorney working out the legal aspect of the county commissioners' action and preparing a campaign to stop the paving.

The following are on the committee with Mr. Check and Mr. Brogan: J. E. George, representing the real estate men; F. L. Nesbit; John Lionberger, representing the Omaha Rotary club; J. G. Brewer of the Omaha Automobile club; Will H. Wood, president of the Omaha Live Stock exchange; Clarke Powell, secretary of the Automobile Dealers association; and Frank Whitmore.

**Breach of Pledge.**  
"The county commissioners were absolutely pledged to brick paving and to brick paving exclusively, before these bonds were voted," said J. E. George. "It was upon this proposition and promise that the people of the county voted the bonds. The present action is absolutely a breach of pledge."

The pledge is to be found in the county archives. It was written and signed by the five county commissioners May 9, 1919, and, without the preamble, is as follows:

"For the purpose of meeting this situation, the undersigned constituting the board of county commissioners of Douglas county, Nebraska, do hereby state, agree and pledge that if the said bonds are voted, the proceeds thereof will be expended only on the construction of brick paving on the highways described in the resolution adopted May 1, 1919, by the board of county commissioners of Douglas county, Nebraska, and substantially in the order named in the said resolution."

(Signed)  
THOMAS O'CONNOR,  
SOPHUS NEBLE,  
A. D. COMPTON,  
CHARLES UNITT,  
H. F. McDONALD.

**But Five Miles of Brick.**  
In spite of this pledge, the county commissioners asked and received bids for "bitulithic" concrete, asphalt and brick paving.

When the bids were opened last Tuesday there were found to be four bidders, these covering only part of the roads on which bids were asked.

That afternoon the commissioners awarded contracts to the Allied Contractors, Inc., for paving the Lincoln highway from the end of the present paving to the Dodge county line, a distance of a little more than 17.33 miles.

Only 5.33 miles of this is to be paved with brick. The remaining 12 miles is to be paved with "bitulithic," a composition material for which the man who presented its claims before the board declared they would give "a guaranty of just what your specifications call for, which is none at all." He said, however, that it would be "good" paving.

**Composition 5 Cents Lower.**  
The price at which the brick paving contract was let was \$5.25 a square yard or approximately \$55,000 a mile. The price for the "bitulithic" was \$4.35 a square yard, or approximately \$46,000 a mile.

The bid of the Allied Contractors, Inc., was just 5 cents lower per square yard for "bitulithic" than that of William Horrobin of Iowa City, Ia. It was 10 cents per square yard lower than that of the Hugh Murphy Construction company.

The county commissioners' reason, given for paving more than two-thirds of the first stretch of Douglas county roads with "bitulithic," is that they can't get enough brick.

"We can't get more than enough brick to pave four and a half miles of Douglas county roads with brick this year," said Commissioner Neble.

"How do you know that?" he was asked.  
"Well, the brick men say so," he replied.

**Even Concrete Preferable.**  
County Commissioner H. F. McDonald was the only commissioner who voted against the "bitulithic" contract.

W. B. Check declared that it would be far preferable to pave the roads with concrete only rather than with "bitulithic."

"Bids were submitted for concrete

at \$4 a square yard," he said. "This would have amounted to \$42,224 a mile. It would be a better paving, I believe, than concrete with the bitulithic topping. Then, later on, the brick could be laid on top of the concrete."

Mr. Check stated that the action to be taken to prevent paving any county roads with anything but paving brick will probably start next Monday.

The precise nature of this action has not yet been decided on, but the committee is working on it. Mr. Brogan declined to be quoted, but referred to the pledge signed by the five county commissioners before the paving bond election.

## Committee to Report On Municipal Hospital Appointed by Mayor

In compliance with a resolution adopted by the city council Tuesday morning, Mayor Smith has appointed a committee to investigate the need of a municipal hospital and make recommendations to the city council.

The resolution was offered by City Commissioner Ringer with the approval of Dr. J. F. Edwards, health commissioner. Dr. Edwards has stated that he believes Omaha

should have a commodious and modern municipal hospital, the estimated cost of which would be approximately \$500,000.

The personnel of the mayor's committee follows:  
Dr. J. F. Edwards, Dr. A. D. Dunn, Dr. B. W. Christie, Dr. G. A. Young, Dr. J. E. Summers, Jr.; Dr. E. C. Henry, Dr. Harold Gifford, Dr. E. T. Manning, Dr. Irving S. Cutter, Dr. H. W. Schulte, Harry A. Tukey, William B. Daly, Walter T. Page, John W. Welch, John L. Kennedy, Alvin Johnson, David Cole, Sophus Neble, Robert Smith, Mrs. W. J. Hynes, Mrs. Samuel Wertheimer, Mrs. Charles L. Gyger, Mrs. C. L. Talbot.

## Fort Omaha Enlisted Men Given Chance to Enter the Air Service

Fort Omaha enlisted men as well as commissioned officers will benefit by the establishment of posts for specialized training for army air service personnel, as provided for in a program approved by Secretary Baker Thursday, according to Lt. W. T. Burns, adjutant at the fort. "It is an opportunity for enlisted men to get training of the highest sort," he said. "We are to send 11 men to these posts within the

next two weeks, and will continue to send them in groups about twice a year.

To qualify, the men must take a severe mental and physical test. They will be sent to Ross field, Lee Hall, Va., and Brooks field, California. The establishment of these posts will interfere in no way with the activities at Fort Omaha.

## Carranza-Yaqui Peace Conference of No Avail

Douglas, Ariz., Feb. 27.—Telegraphic advices reaching here today from Hermosillo, Sonora state capital, conveyed the information that

the conference to arrange a tentative peace between the Carranza government and the various units of Yaqui Indians warring in the state of Sonora, failed yesterday when Yaqui representatives withdrew.

## Fire at Fort Crook.

In spite of efforts of two bucket-brigades of soldiers, two cottages and a blacksmith shop at Fort Crook were destroyed by fire Thursday night. The homes were the property of Duke Oakley and J. W. Lairy. Two hundred soldiers fought the flames with buckets without success.

**Sure Relief**  
BELL-ANS  
FOR INDIGESTION  
6 BELL-ANS  
Hot water  
Sure Relief

## Ladies Home Journal Fashion Quarterlies - at 10c

Did you get yours? With every dress pattern purchased we give, free of charge, one embroidery pattern.

Brandeis Stores—Main Floor—East

## Bed Sets and Spreads

Bed Sets—6.98

Regular 9.50 Values

Consists of one spread, with scalloped edge and cut corners and bolster to match; in neat stripes of blue or pink; for one day only, at, per set, 6.98

Bed Spreads—4.98

Regular Price 5.25

The crocheted kind in very pretty patterns with scalloped edges and cut corners; large size; special, for this sale only, at 4.98

Bed Sets—9.98

Regular 12.00 Values

Of superior quality satin finish damask, with one bolster to match; spread in scalloped edges and cut corners, in very attractive patterns; large size; special, each at 9.98

Bed Spreads—7.50

Regular Price 9.00

Of extra heavy quality material with scalloped edges and cut corners; colors are pink, blue or yellow; large size; special, at 7.50

Brandeis Stores—Main Floor—South

## Infants' Bed Quilts 3.69

Values From 5.98 to \$10.

Of Japanese silk, crepe de chine and satin, in dainty pink and blue; hand quilted and hand embroidered. We have them in two sizes and they are very appropriate for baby showers. Worth from 5.98 to \$10, specially priced, for Saturday, at 3.69

Brandeis Stores—Third Floor—East

## Featuring for Saturday—Girls' Regulation Wash Dresses SPECIALLY PRICED At 7.50

These are the most practical dresses for Spring school wear and are used as the school costume by some of the best girls' schools in the country.

They are guaranteed to be of fast colors and are shown in the new Beach cloth in French blue and all white with blue collars.

We have both the one-piece dresses and the two-piece "Middy" styles. The sizes are 6 to 16 years.

Brandeis Stores—Second Floor—West

## New Arrivals in "MARVEL HATS"



Many new shapes appear in clever off-the-face style, Mitzi Sailors and other effects. The brims are made of fine quality Baby Hackle in iridescent effects with crowns of Lisere in both black and navy.

The Hats are examples of the wonderful values which can only be found in "Marvel Hats," at—

10.00

In our untrimmed section we are showing all the new things in Hair Braid or Lisere Braid. A full line of up-to-the-minute shapes.

Choice 3.98 and 5.00

Brandeis Stores—Second Floor—West

# Brandeis Stores

SETS THE PACE FOR GROWING OMAHA

## Announcing—The Opening of Our Enlarged, New Boys' Clothing AND Furnishing Department

On the New Fourth Floor

This gives us 5,000 square feet of selling space for the boys' department. Bring your boy at any time and the expert boys' clothiers will be glad to aid you in selecting just what you desire. Plenty of room and a varied selection of clothing make shopping here easy and profitable.

In order that all the mothers and boys can become acquainted with our New Boys' Shop, we are putting on this great "Opening Sale," Saturday, at prices way below usual. You will save a lot of money on your Saturday purchases in our new Boys' Department.

Boys' Wash Suits, 2.45 At Less Than Half Price

Over 500 of them in Russian sailor and Oliver Twist models for boys from 2 to 10 years old. They are all washable Spring patterns, some being embroidered, others in tan linen, blue and white Galatea and poplins, from the best makers in the country, such as Manhattan and Lauer. They are worth from \$3.50, \$5.00, \$7.50 to \$10.00. Special for this sale only, at, per suit, 2.45

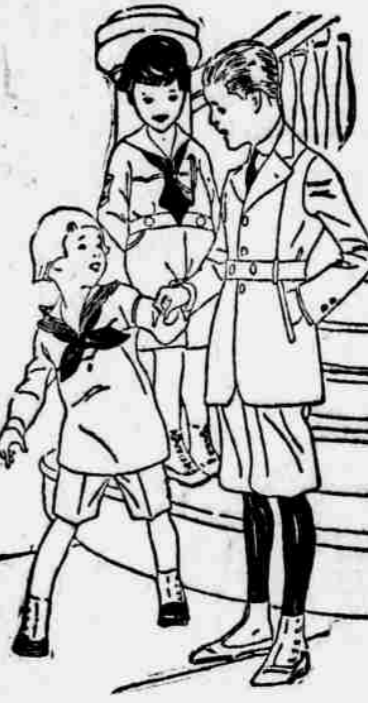
Boys' Blouses, 95c Regular 1.35

Of the best percale in light and dark assorted colors—cut big and roomy. Worth 1.35, special for this sale, each, at 95c

Brandeis Stores—Fourth Floor—Center

Spring Knickerbocker Suits Prices From \$10 to 17.50

Everything that is new in style, fabric and weave will be found in these suits of worsted, cassimere and novelty mixtures. You will find them in all of the wanted shades—and each suit has an extra pair of pants. Special at \$10, 12.50, \$15, 17.50



Very Special Boys' Stockings, 21c

To make certain that your presence on Saturday is worth while to you—on that day only, we're going to sell an excellent grade of heavy ribbed Black Cotton Stockings for Boys (the regular 50c kind), at the very low price, per pair, of 21c

Extra Knicker Pants, at 1.00  
Of good, serviceable material; all seams reinforced; regular 1.50 values, special, at 1.00

## Knit Underwear For Women

Lisle Union Suits, Each 1.19



For women; light weight in fine lisle; bodice and regulation top; flesh and white in regular and extra sizes; regular 1.50 value, special, per suit, at 1.19

Lisle Vests at 59c

For women; of fine Swiss ribbed lisle; all styles in flesh and white; regular and extra sizes. Very special, at 59c

"Kayser" Lisle Union Suits Special, Each 1.69

For women; in lisle and mercerized lisle; odds and ends of Kayser garments in knee and ankle lengths; flesh and white in regular and extra sizes; regular 2.50 and 3.00 values, special, at, per suit, 1.69

Brandeis Stores—Third Floor—North

We Offer at the Beginning of the Season

## Women's New Spring Coats

Actual Values From \$60 to \$75, Very Special, at 48.75



A timely purchase of manufacturers' samples enables us right at the height of the season to offer coats of exquisite materials—at a worth while price reduction.

Silvertones, Tricotines, Silverflake, Bolivia and Tinseltone. Fancy linings of Satin and Pussy Willow Silks throughout. Stitching, buttons and fancy pleats used in trimming.

Spring shades, Bluebird, Reindeer, Slate, Morocco, Putty, Navy and Black.

Saturday's economy price

48.75

Brandeis Stores—Second Floor—Center

## Ultra-High Shoes For Ultra-Smart Women

Regular 12.00 to 16.50 Values, Special, at 6.95

All are nine-inch lace or button styles, in welted or hand-turned soles, with covered Louis or low walking heels.

The lot includes all over black, gray and field mouse kids, dull leather in calf or kid, Ko Ko brown and many other combinations.

Everyone realizes the saving to be made by buying these shoes, as the price of footwear is steadily advancing. Buy now for next Fall and save yourself needless expense.

Brandeis Stores—Main Floor—West

## "Brandeis Special" Corsets

Here for Saturday at 2.95



A "front lace corset" with a ventilated back and front shield; low bust and medium hip; two elastic side gores. It is made of excellent quality pink coutil, well tailored and neatly trimmed. Special, for Sat., at 2.95

Pink Mesh Bandeaux

In the front and back closing with narrow shoulder straps. Each bandeau has a little narrow elastic insert in the back. Special, Saturday, at 48c

Brandeis Stores—Third Floor—East

**OVER-ACIDITY**  
of the stomach has upset many a night's rest. If your stomach is acid-disturbed, dissolve two or three **KI-MOIDS** on the tongue before retiring and enjoy refreshing sleep. The purity and goodness of **Ki-moids** guaranteed by **SCOTT & BOWNE** MAKERS OF SCOTT'S EMULSION