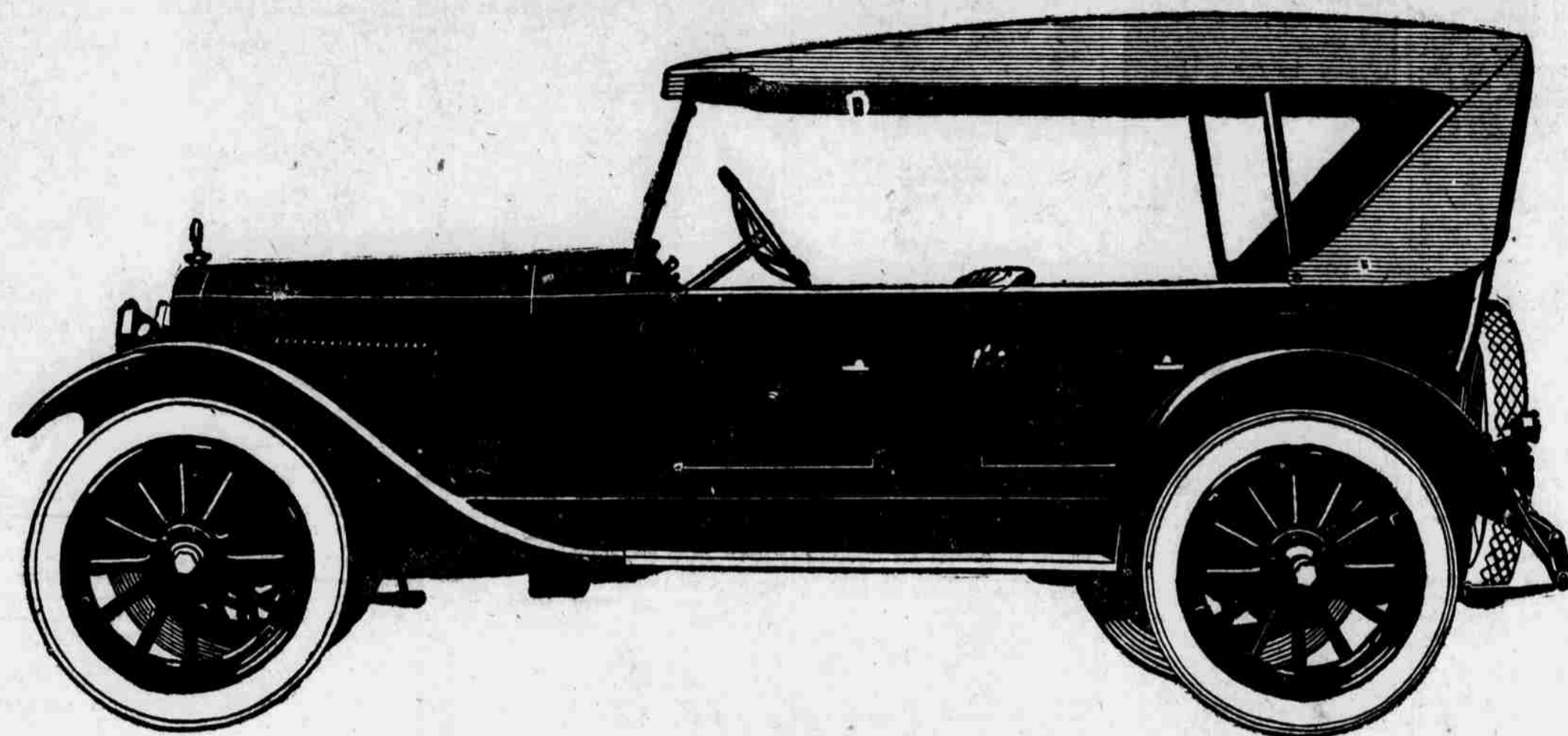


AN ENTIRELY NEW MODEL



GRANT SIX

THE new Grant Six is a truly *fine* car—fine mechanically—fine in performance—and fine looking. You will like it, for it presents features of style, beauty, refinement and completeness entirely new in a car of its price.

Back of this new Grant Six is an experience gained in building over fifty thousand Grant Sixes. In it is embodied all the benefits of this ripe knowledge.

Smartness With Comfort and Completeness

Of course, the first thing that strikes buyers who look at this car is its extreme beauty. It is the perfection of proportion and design. Its lines typify the best thought of the world's greatest body designers. Nothing so attractive has ever been seen in a car of such moderate price. Indeed, it is not surpassed by cars of much higher prices.

The new style radiator is imposing in appearance and in entire harmony with the body lines. The top is well designed and beautifully made from excellent materials. The upholstery is in genuine leather and the cushions luxuriously comfortable. Seat springs are the finest money can buy. Inside trimming is finished with leather covered moldings. Instrument board is mahogany finished. Tool kit is carried in special compartment in the left front door—and equipment includes such surprising conveniences as a Boyce Motometer and a Kellogg Power Tire Pump.

Dependable Power With Unusual Strength

Fine engineering is apparent in the Grant Six chassis. Everything about it denotes strength, permanent durability and convenience of operation.

The motor—overhead valve type—is powerful, quiet and quickly responsive. It will take the car over any road or up any hill as fast as you care to go.

It is a motor that creates and sustains enthusiasm. But that is best demonstrated by a ride. Come and get it. Sit at the wheel yourself.

The pressed steel frame is extra deep and strong. The Columbia rear axle is floating type with one-piece housing of exclusive design, and 12-inch equalized brakes. Front axle is drop forged I-Beam. Steering connections are of extra strength and all bushed.

World's Easiest Riding Light Six

This sounds like a strong claim, but the car in action proves it. We emphasize its wonderful spring suspension. It is by long odds the most comfortable riding light six ever marketed. Springs are semi-elliptic both front and rear, 38x2-in. in front and 56½x2-in. in rear, the longest ever used in a car of its size. Spring shackles are extra long and all springs are equipped with oil-less bushings (permanently lubricated). Springs ride almost flat with the car loaded, reducing rebound to the minimum. You will like the supremely comfortable riding qualities revealed in this model.

Every Detail High Grade

Spark and throttle control are on the steering wheel, which is placed at an ideal position for any size driver.

We would like to tell you about every detail of the New Grant Six. It is a genuine pleasure

to talk about and show its different high grade features. We feel honest pride in this car. It's just the smart, stylish, well built five-passenger car that most people want—and its finish and lines are certainly beyond comparison. But better than anything we might say, any picture we might paint, is the car itself. Come and see it. Find out all about it before you buy any car. Let it tell its own story.

Read these brief specifications carefully:

SPECIFICATIONS OF THE GRANT SIX

MOTOR—Six cylinder, overhead valve type, 3½x4¼-in. bore and stroke; Stromberg carburetor; Stewart vacuum system—Two-unit starting and lighting system.

AXLE—Rear, Columbia, floating type with 12-in. equalized brakes—one-piece housing of exclusive design—50% stronger than conventional two-piece housing—brake connections permanently lubricated. Front axle—drop forged I-beam.

STEERING GEAR—Irreversible; continuous jacketed tube—connections bushed.

CONTROL—Spark and throttle on 10-in. notched mahogany steering wheel. Extra long, nickel plated emergency brake lever and extra long gear shift lever.

SPRINGS—Front, 38x2-in.; Rear, 56½x2-in.; semi-elliptic. Rear springs underlung, permanently lubricated bushings. Extra strong deep frame. Ideal Hotchkiss drive.

TRANSMISSION—3 speeds forward and reverse—Speedometer drive from transmission. Tubular propeller shaft— Spicer universal joints, Borg & Beck 10-in. disc clutch.

RADIATOR—Reinforced double shell construction—removable core, latest design—black enamel finish.

WHEEL BASE—116-in., 32-4-in. **TIRES**, non-skid in rear—Firestone tires.

TOP—One-man type with plate glass rear window and door opening curtains.

BODY—Beveled edge, upholstered in genuine leather, semi-bright finish. Outside nickel door handles. Finish—Grant blue, black guards and fenders; wheels—white striped.

EQUIPMENT—Complete including Boyce Motometer and Kellogg Power Tire Pump.

*Five passenger Touring Car, \$1495
Three passenger Roadster, 1495
f. o. b. Cleveland, O.*

NEW GRANT ENCLOSED MODELS READY SOON

Grant enclosed models reflect the most advanced ideals of beauty and comfort.

They include Five-Passenger, Four-door Sedan and Four-Passenger Coupe. Prices to be announced later. Wait for them.

OMAHA AUTO SALES CO.

2060-62 Farnam St.

Distributors

Omaha, Nebraska

Live Dealers Wanted in Open Territory. Write or Wire at Once.

GRANT MOTOR CAR CORPORATION, CLEVELAND