

# Oldsmobile

## Thorobred and the Economy Truck

*Strong Products Made by a Strong Company*

### 7-Pass. Thorobred

Here is the famous Oldsmobile "Eight" in handsome new dress—setting the pace for 1919, in appearance and in comfort as well as mechanically.

Its long, low, straight ultra-smart body lines are accentuated by the characteristic Oldsmobile radiator and such distinctive touches as the nicked door handles and bevelled rails.

A new method of suspending the very long, semi-elliptic rear springs greatly increases its riding qualities—and the "Eight" always was a very comfortable car.

In abundance of flexible power this Oldsmobile stands alone. Because of the two-phase power feature it will accelerate within a few hundred feet from one or two miles an hour to a racing speed. Yet it is extraordinarily economical of fuel. Such character in an automobile

usually implies high price. But this Oldsmobile, proven dependable, is very moderately priced. It is, in fact, the one car of its type and quality that is moderately priced.

The Thorobred model is designed to comfortably accommodate seven passengers. The Pacemaker is a dashing four-passenger sportster. Both models are priced at \$1,805—f. o. b. Lansing.

### Economy Truck

The Oldsmobile Economy Truck represents the highest development of the light truck idea. It is the acme of economy and efficiency. It delivers capacity loads in record time and in the best possible condition. The Oldsmobile Chassis can be equipped with any kind of a body. Bodies for general farm use may be had on a moment's notice. Other special bodies can be made right here in Omaha.

#### Power

It delivers a maximum amount of power at a minimum cost—because every ounce of power developed by the sturdy four-cylinder engine is transmitted directly to the Oldsmobile-Torbenzen internal

gear drive. This feature has been worked out to such a degree that there is no jerking or lost motion between the power impulses—an even, steady flow of power is transmitted to the rear axle once the motor is started. This flow of power is as steady as an electric current.

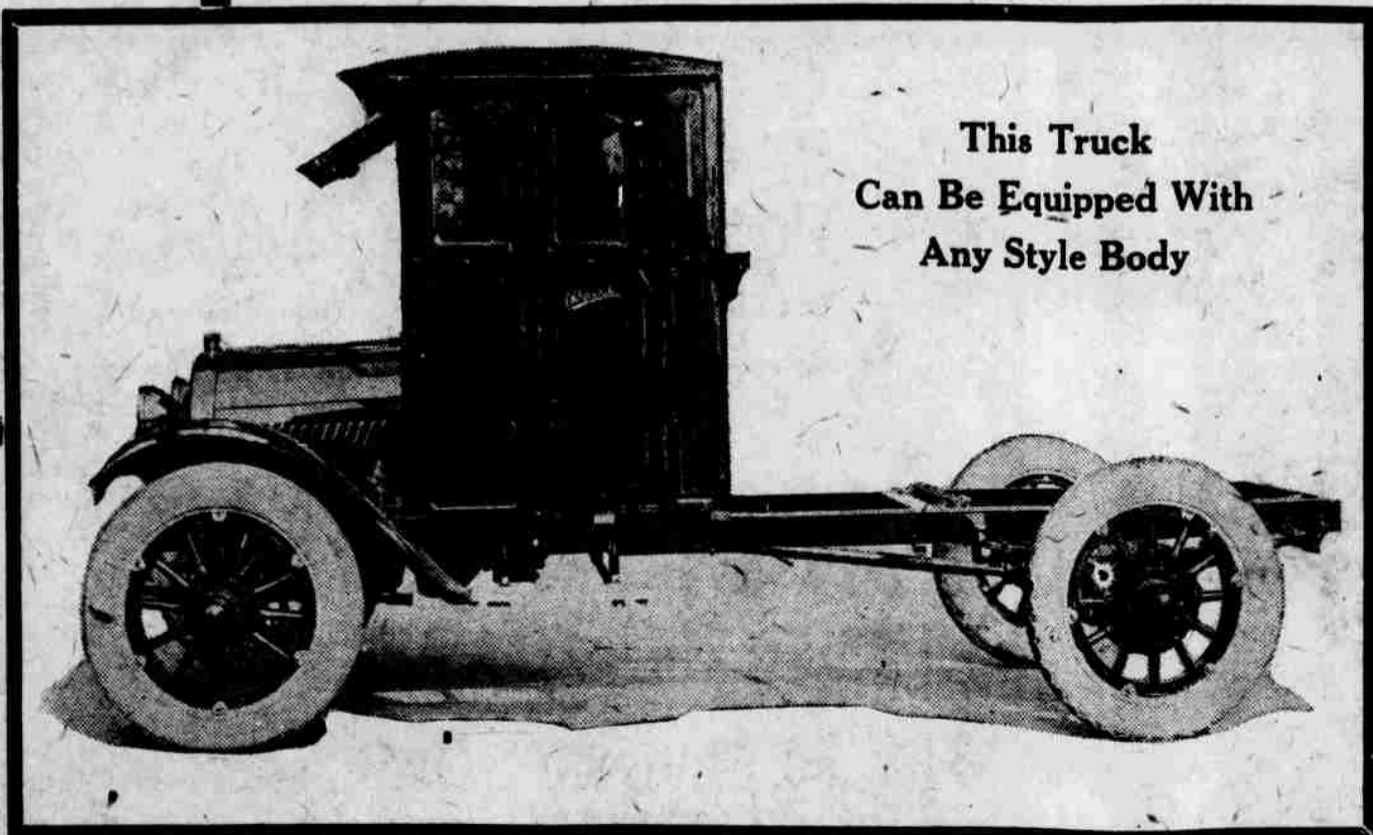
#### Speed

It maintains a high speed average. Because its power overcomes all obstacles of road and load so readily. Because it is mounted on 35x5-inch Good-year Cord Tires and fitted with extra long semi-elliptic springs which reduce road jar and strain to the minimum. Because complete electrical equipment (including a self-starter) and every other convenience make it easy to handle.

#### Low Cost

The first cost of the Oldsmobile Economy Truck is very moderate. The gasoline and tire mileage are exceptionally high; that means low cost of operation. Low maintenance cost is assured by the sturdiness of every element that enters into the construction and by the fact that every unit used is a standard unit of proven ability to perform.

**NEBRASKA Oldsmobile COMPANY**  
 920 Locust St., Des Moines, Ia.      Chas. A. Tucker, Gen. Mgr.      2555 Farnam St., Omaha Neb.



This Truck Can Be Equipped With Any Style Body

