

### FULTON TRUCKS FIGHT EACH OTHER IN MEXICAN WAR

Vehicles Manned With Machine Guns Captured by Villa and Four Drivers Hanged.

When A. L. Jones, Texas superior for the Fulton Motor Truck company delivered a fleet of trucks to the representatives of the Mexican government at Piedras Negras, opposite Eagle Pass, little did he realize the trouble that particular fleet was going into and little did he mean to him. Fulton trucks delivered to the Mexican government ultimately fought other Fulton trucks, all vehicles armed with machine guns. The government sent out the fleet manned by Mexicans, both drivers and mechanics and all trained by Mr. Jones and El Paso where he secured time from San Antonio to Eagle Pass for immediate service. The fleet was captured by Villa.

**Four Drivers Hanged.**  
Four drivers were hanged, two were shot and two held as prisoners to train Villa men to operate the trucks which then took part in the attack on Juarez. Mexico's loyal troops left without their trucks and their machine guns appealed to Mr. Jones who hurried by train to El Paso where he secured time from San Antonio to Eagle Pass for immediate service. The trucks were provided with machine guns and sent out after the brigands of Villa and the captured trucks. When the United States troops interfered in the scrap due to firing across the line, Villa ran and so did his men. They abandoned the stolen trucks after a battle with the second fleet. The

combined truck forces then crossed the border into the United States and Mr. Jones delivered back to the El Paso distributor the trucks he had commandeered summarily. The Mexican trucks were then driven down the American side of the border, returned to the Mexican side without trouble and all was serene.

### Don't Yell at Fellow Who Burns Lights in Daytime

Many motorists do not know that there is as much danger in letting their batteries get overcharged as there is in letting the charge run too low. Overcharging is very likely to happen during long runs when the car is operated at 20 to 25 miles an hour for a number of hours continuously. At this speed the generator is delivering current to the battery at its maximum charging rate, according to F. S. Armstrong, sales manager of the Vesta Accumulator Co., manufacturer of Vesta Storage Batteries. An overcharged battery heats, with the result that the active material in the plates loosens and falls to the bottom of the battery, shortening its life. Most cars have automatic cut-out in the electrical system which is supposed to prevent over-charging, but this, like many automatic devices, sometimes fails to work at the proper time.

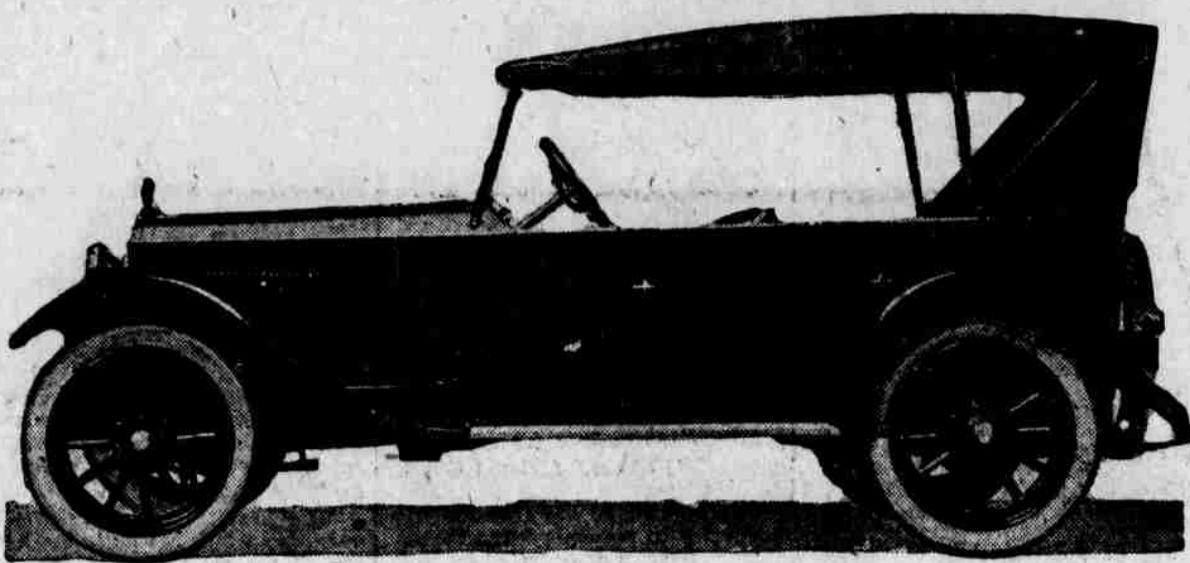
The safe way is to burn your lights, at least part of the time, when on a long drive. This takes the load off the battery and insures against overcharging.

### Cadillac Deliveries Are Increasing Here

According to J. H. Hansen, deliveries of Cadillacs are now increasing, and the customers who have waited patiently for their cars are very much pleased to now receive them. Mr. Hansen has received several carloads of Cadillac cars per week for the last few weeks and is slowly but surely catching up on orders.

**Top Mending.**  
To mend a tear in the top it is best to use woollen yarn to draw the edges together, after which a top of material similar to that of the top is applied with rubber cement, set by the vulcanizer.

### Mew Grant Light Six Has Long Base



An entirely new light six with longer wheelbase, a wider power range, enhanced flexibility and comfort for passengers and driver and more artistic lines is announced by the Grant Motor Car corporation of Cleveland for the 1920 season.

Back of this new car is the experience of the Grant organization in producing more than 50,000 Grant light sixes, insuring for the purchaser the de luxe edition of the light six builder's art.

**Battery Tester.**  
A glass tube, which may be carried in one of the door pockets, makes an admirable instrument for determining the water level in the battery. In using it the tube should be inserted in the battery, with one end held over the upper end of the tube. By lifting the tube up slightly the depth of water in the battery at once appears in the tube. In refilling the battery with distilled water this tube may again be used. By holding the vessel containing the distilled water against the tube, the water will flow down the tube and into the battery without a spill.

West Virginia university did not suffer the anticipated loss of gridiron material this season and as a result the southerners expect to have another fast eleven.

Along with the announcement of the new car comes the statement from the Grant corporation that manufacturing facilities will be extended to permit the doubling of production for 1920, for which season 20,000 Grant light sixes will be made. An additional story will be added to the big Cleveland plant and adjoining property has been acquired to bring about this expansion policy. Work of preparing the factory for a doubled production is going forward rapidly.

Extreme beauty of lines immediately impresses the observer of the new Grant. The new style radiator is imposing in appearance and in complete harmony with the body lines. The one-man top is of the best material and beautifully designed.



(Note: This is No. 6 of a series of eight lessons in the care of solid truck tires prepared by The B. F. Goodrich Rubber Co., Akron, Ohio.)

**TRUCK TIRE TIPS**

Loose chains on solid tires have been found least injurious as they work themselves around the wheel and provide an equal distribution of the wear and strains.

Stationary chains and other devices are most injurious because the wear and strain are constantly confined at the points of bearing.

The traction (rear) wheels are liable to spin more or less in slippery places and this produces a sharp blow on the tires where these devices are in contact.

It is advisable to use a device having cross pieces, as the wheel gains momentum between these points and the greater the distance the more severe the blow. Less injury will result if such devices are used only temporarily to pass over soft, slippery places. Great injury results from careless and continued use of anti-skid devices on pavements or hard roads where there is little or no need for them.

### MOTOR BUS FOR CITY SERVICE NOW PRACTICAL

Many Inconveniences of Steam and Electric Train Overcome by New Gasoline "Jitney."

The motor bus, the outgrowth of the American "jitney" with the adoption of certain principles of the English omnibus, is growing in importance as a public carrier. Its services are inter as well as intra-urban. The irresponsibility and lack of business methods of the pioneer "jitney" operators, has given way to the carefully and efficiently conducted operation of the motor bus of today. The latter is as different from the "jitney" of 10 years ago as the railroad of today is from the railroad of 50 years ago. No longer is there ignorant rate cutting, inferior equipment and reckless operation. These features in recent times have been in a large measure completely reversed.

When a car or train develops a mechanical difficulty which prevents its further progress, all the succeeding cars or trains are delayed until the disabled car is repaired or removed. Not so with the motor bus—a breakdown only ties up the one bus. Succeeding busses merely pass around the disabled bus and the schedule suffers but little.

**Allows City Development.**  
As a community develops, its transportation needs develop. The common electric carriers of our modern cities either under or over develop their service. Over-development results in a greater outlay of capital than is essential. Service which is maintained beyond the areas of need, is not self-sustaining and forces the service in the densely populated areas to carry the losses. The passengers of the profitable part of the line therefore, do not receive the best service that their fare might purchase. The motor bus, on the other hand, can extend its route just as slowly or as quickly as requirements demand, thus giving its passengers a full return for their fare.

Cities may become over crowded, and while there is territory for expansion, this expansion does not occur or is very slow. Such conditions may be caused by deficient or too distant transportation. A person prefers to live within a comparatively short distance from a transportation agency that will take him to his work without delay and in comfort. Where traction officials have been short-sighted, city expansion has been retarded. The motor bus unit is so cheap in comparison to other transportation units, that it can be sent into territory for development purposes, at a fraction of the cost of traction units. With the present congested conditions in cities, this is an important consideration.

The motor bus, being smaller in size, and lighter, per passenger, in weight, than the common electric carriers, is the logical transportation agency in crowded or narrow streets. In such streets, surface cars running down the center, crowd traffic causing congestion and accidents. Motor busses run as does ordinary traffic, thus minimizing traffic congestion. When the storage battery cars which were run through the crowded East Side of New York City were taken off by the new York City car lines receiver, Mayor Hylan immediately substituted motor busses. These busses have been in operation

only a short time so that while definite conclusion cannot as yet be drawn, indications are such as to confirm the previous statement.

**Inserting Small Screws.**  
It is often difficult to start by hand the small screws such as are used in magneto, speedometer, etc. An easy way around this difficulty is to hold the screws between the legs of a pair of calipers, a drawing compass or even in the slot of an ordinary steel pen. The screw is then driven home by the small screw. The same method may be used in replacing small nuts located inaccessibly.

—Automobile Blue Books.  
The bell received its crack when the wagon carrying it broke down.

### GOODS SOLD TO PREVENT WASTE SAYS RED CROSS

Plain and Full Statement Made to Refute False Rumors of Sales in France.

Paris, Sept. 27.—Because many inaccurate reports of large sales of American Red Cross merchandise have appeared in the past few weeks Red Cross headquarters in Paris has issued a statement explaining that the only materials which have been sold are certain perishables, second-hand equipment, surplus stocks and articles which can no longer be used for direct relief work, either in France or in eastern Europe.

The total sales of surplus and second-hand material by the American Red Cross in Europe will aggregate not more than 30,000,000 francs, says the Red Cross, while the value of the relief material distributed in Europe during July and August alone will amount to more than 100,000,000 francs.

**In Seventeen Countries.**  
The American Red Cross is now conducting operations in 17 European countries. The relief material distributed in France, mainly in the devastated districts, since the armistice, is valued at over 125,000,000 francs, while in the same period other European countries have received more than 200,000,000 francs worth of similar supplies, including not only medical and surgical material, but also clothing, food, barracks, etc.

Such sales as have been authorized in France have been conducted through the American Red Cross liquidation board. The official statement says regarding this material:

**Heavy Polish Expenses.**  
"Unexpectedly heavy expenses of work in Poland and the Balkan states and the beginnings of new relief activities in western and southern Russia made it advisable to turn these stocks into cash to assist the relief programs, as well as to save certain of the accumulated stocks from total loss."

"Of all the relief material in the American Red Cross warehouses on May 1 one-third was set aside for distribution in the devastated districts of France. The distribution of this material is still continuing and will continue for months to come, while the shipments of relief material to the commissions in eastern Europe are on a constantly increasing scale and will continue thus for many months."

That the Goodyear Tire and Rubber company's factory house organ, The Wingfoot Clan, has been reaching former Goodyear employees, now with our army of occupational Germany, is indicated in a letter just received from a soldier in the region of Coblenz. In the casualty lists this doughboy was reported killed in action, the first news of which came to him when he read his name in the honor roll contained in his factory paper. He writes emphatically deny having "gone west" and states that he is eagerly looking forward to resuming his former duties back at the factory.

til 5 in the evening, a constant stream of men, both foreign and American born, have passed the cashier's office of the Goodyear Tire and Rubber company, Akron, O., making their final payment upon their Liberty bonds. The line doubled back upon itself even in the spacious lobby of the general office of the company.

Allentown, Pa., became famous during the revolution when, to prevent British seizure, the Liberty bell was conveyed here by team from Philadelphia. "Old Liberty" was concealed in the cellar of Zion's Reformed church, and which event is recorded on a bronze tablet placed by the D. A. R. It is said

### Ak-Sar-Ben Visitors Welcome



### THIS CAR Sets a New Standard

This new Allen gives riding comfort without unnecessary wheelbase—beauty, fine finish and many niceties without high cost—and economy without sacrificing the power to perform.

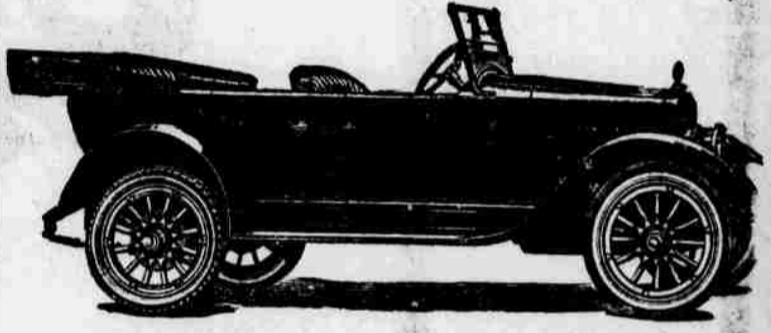
To appreciate the truth of these statements, you must drive the new Allen—no one can tell you how this car feels, and controls, and rides, and jumps away.

We invite your inspection.

MR. DEALER: If the Allen is not handled in your territory, come in and talk it over.

### LININGER IMPLEMENT CO.

DISTRIBUTORS  
Nebraska, Western Iowa, South Dakota,  
OMAHA, NEB.  
Phone Douglas 109.



THE NEW ALLEN \$1,395.00 F. O. B. FACTORY

### A Properly Sized Enclosed Car of Unusual Economy

To the car owner who appreciates the comfort and convenience of room in an enclosed model the Holmes makes instant appeal.

The seating space is properly sized for the comfort of the occupants. The seats are generously wide and deep.

Doors are wide and so arranged as to afford easy entrance and exit. Fittings are in keeping with the luxury of the body dimensions.

That such a car may be operated, under all conditions of driving, at a fuel consumption of 18 to 20 miles to the gallon of fuel and at a tire service of 10,000 miles to the set is unusual.

In the Holmes Improved Air-Cooled Car with dual exhaust valves, aeroplane type motor, eighteen valves all in the head, gasoline economy is a result of superior motor efficiency. And motor service is unrestricted either by hot summer days or freezing days in winter.

Unusual tire service is the result of light weight, flexible chassis construction and full elliptic springs. The tires are not overloaded, neither are they subjected to heavy pounding strains. The car rides lightly and easily over all roads, carrying the passengers in perfect comfort, and saving on the tires and on the car itself.

High operating costs are no longer necessary in an enclosed car of proper size; the price of economy is no longer restricted carrying capacity and cramped discomfort.

**Tate-Morton Company**  
Distributors for Nebraska and Iowa.  
2417 Farnam St. OMAHA, NEB.

# HOLMES Improved Air Cooled

## Mr. Motorist

Look for This Sign

When in Need of Gasoline and Oils

OMAHA GASOLINE  
**24 1/2** "Best in the Long Run"  
OMAHA REFINING CO.

It Means the BEST GASOLINE at the LOWEST Prices

### RETAIL STATIONS

- |                           |                      |                                  |
|---------------------------|----------------------|----------------------------------|
| 2209 Harney Street        | 5638 Center Street   | 4526-28-30 S. 24th St.           |
| 18th and Nicholas Sts.    | 6001 Military Road   | 4426 South 24th St.              |
| 17th and Capitol Ave.     | 8401 North 30th St.  | 2562 Leavenworth St.             |
| 16th and Leavenworth Sts. | 1408 Military Avenue | 5th St. and Avenue H, East Omaha |

Ask for Our Coupon Books

# OMAHA OILS

"Best in the Long Run"

OMAHA REFINING COMPANY  
PHONE WEBSTER 900

