

### OWNER ON DRIVE TO CALIFORNIA SAYS NASH 'FIT'

Big Six Proves Ability to Go Through Mud in Hard Journey Recently Taken.

Crossing the country during a rainy period in a drive from Rockford, Ill., to California, D. P. Cutler emerged from the sea of mud an ardent advocate of good roads and an enthusiastic admirer of his Nash Six, which carried him and his family through with only one stop on the road—a stop to change a spark plug.

"More could not be asked of any car than has been delivered by this," said Mr. Cutler in a letter, "and if our return to Rockford is nearly as smooth as the trip out we will take off our hats to the Nash Six."

**Car Doesn't Fall Down.**  
"Our car has done everything we have asked of it and a little bit more." Out here in California our engine purrs along over the roads and fairly eats up their steep grades. "It is wonderful experience to be able to cross the country from Illinois in 12 days—a trip that took pioneers six months or more. We have looked the country over from the top of Pike's Peak, driving our Nash to the top—an altitude of 14,109 feet. We have looked down into the canyon of the Colorado, a sheer drop of over 6,000 feet."

**Only Hesitated Once.**  
"In fact, the only time our Nash hesitated was when we shoved its nose up to look down this awful depth. Through sunshine and rain, over good roads and bad, through conditions that at times were appalling, we have at last arrived in the land of eternal sunshine—the motorists' paradise."

"We did not reach the celebrated asphalt roads of California until within 30 miles of San Bernardino, where at Cajon Pass we drove up, over and through the mountains on asphalt roads with easy grades that can be negotiated 'on high.'"

**Dealers' Enthusiasm for Allen Cars on Increase**

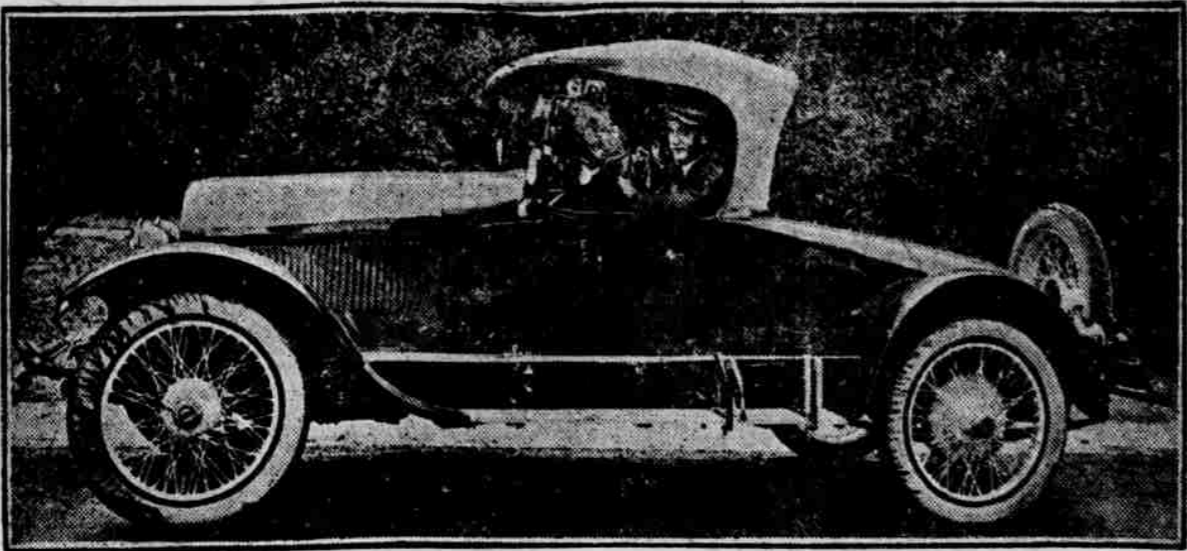
"We've noticed a decided increase in dealer enthusiasm since our dealers have had to drive their cars away from the factory instead of shipping by rail," said R. G. Ewell, sales manager of the Allen Motor company of Columbus, O.

"When first the shortage in shipping facilities was felt motor car makers worried about the lack. They have found, however, that there is no better kind of introduction between the product and the dealer than the long drive-way experience."

"If the car is a good performer, the trip home from the factory will fortify the dealer with selling enthusiasm such as he could not possibly get from the short test rides ordinarily made close to his sales-room."

Bee Want Ads offer rare bargains to persistent readers.

### Stephens Salient Stands Long Trip Well



A very unusual record for service has just come to the notice of the Mid-City Motor & Supply company in connection with the sale of a model 82 Stephens Salient Six roadster made to B. M. Stoddard at Sloan, Ia., on July 19.

Since this automobile was purchased it has been used continually by Mr. Stoddard in a pleasure

trip over the western part of the United States and has been driven in his possession, 4,850 miles. Three thousand two hundred and fifty miles of this was made in one trip, to Chicago, thence to Winnipeg, and back to Omaha. The average mileage secured by Mr. Stoddard was 19 miles per gallon of gasoline, which is conclusive

proof of the efficiency of the new power plant used in the Stephens Salient Six.

### TOWNSEND ASKS FARMERS TO AID ROAD MEASURE

Importance of Truck Highways Called to Attention of Land Owners; Urges Co-operation.

Asserting that construction and maintenance of the main highways of the country will not only insure the farmer travelable trunk roads the year around, but will also release state and county funds for the construction of farm to market roads, Senator Charles E. Townsend of Michigan has called upon the farmers of the country to co-operate with him in securing the passage of the Townsend bill.

In a letter addressed to members of the National Grange, Senator Townsend says:

"Few questions are of more far-reaching importance to the people of the United States, none in my opinion, to the people of the farms of the United States, than the question of how best to efficiently and economically build roads which will serve all interests. The remarkable growth of motor transportation in the past few years, and its still more tremendous potentiality for the future, the great necessity for interstate roads no less than market roads, has brought us to a point where past procedure is no longer sufficient. Large sums will inevitably be expended on our highways to make them useful for longer periods and to decrease transportation costs. Every dollar so expended must bring back a full dollar's worth of value."

I introduced a measure which would provide for a national highway system of main trunk lines to be constructed and forever maintained by the United States government under the direction of a federal highway commission and requiring as a basis for administration, a scientific study into the principles governing highway transportation and construction.

"My purpose at that time was simply to bring about a country-wide discussion. So general was the public interest that a great many national, state and local organizations endorsed the principles so enunciated, while many valuable and constructive suggestions were received."

**Ask Farmers' Help.**  
"These suggestions I have since incorporated into a bill which is now, once more before congress, this time with the hope that an aroused and enlightened public sentiment may result in its translation into law."

"A principle involved in this bill may need statement in more detail at this point, to meet certain suggestions which have come, especially from the people of the farms of the country. It is that by taking over a certain definite mileage of highways in every state to be built and maintained by the federal government, the states and the localities, will be given not only the incentive and the example of well-built roads, but will also have saved from their own expenses for such construction the money needed to build those equally needed market roads and at the same time will be providing the across-state and interstate roads which makes every radiating market road not only a market road to its nearest market point, but to the other greater market centers."

"If you agree with the principles contained in my measure, I would be glad to have your earnest co-operation in securing its passage."

That surplus piece of furniture can be turned into cash by a Bee Want Ad.

### FUEL GREATEST PROBLEM THAT FACES AN OWNER

Low Grade Gasoline Often Causes Motor Knocks and Fouls the Spark Plugs.

"With the tremendous increase in the consumption of gasoline and the consequent reduction in its quality the fuel problem is becoming of greater importance every day to the automobile owner," declared Guy L. Smith today.

"To understand the situation it is necessary to remember that the automobile motor is operated by heat, that it is the expansion of the hot gases in the combustion chamber that moves the piston. The problem then is to extract as many heat units as possible out of the fuel that is taken into the cylinder."

**Concerning Rims and Rim Devices for Autos**  
There is in general use today three basic types of rims, the fixed clincher, the demountable clincher and the straight side. There are variations of these, such as the universal, which is a side ring type, convertible from straight side to clincher merely by reversing the side ring.

The fixed clincher type is used on only one make of car, the Ford, and the writer understands that the greater part of the present production is going to come through with demountables. The demountable clincher is used to some extent and is an excellent type. It is simply an ordinary clincher rim, with which soft bead clincher tires are used, but instead of being fixed to the wheel the rim is held in place by means of the usual lugs. The split rim is the type generally used for straight side tires. This type is traversely split and the ends are jockeyed together so that there is no possibility of their coming apart. The universal rim is fitted with a detachable side ring by means of which it may be made to accommodate either straight side or clincher tires.

**Oil Shield.**  
Vaporized oil that comes through the breather is blown out in a mist, covering hood and engine and making an abominable mess. This trouble may be cured by fitting an elbow of soft rubber hose over the breather pipe. A tin pipe is fitted over the other end of this elbow long enough to reach down into the dust pan, to which it is fastened. In this way the vaporized oil will be carried away from the engine and hood.

**Has High Horsepower.**  
"The result may be seen in the Essex, the wonderful performance of which during the past few months has astonished the motor world. Although it is only 29½ inches in length overall, the Essex motor develops more than 56 horsepower. This remarkable achievement is made possible by its scientific construction, which permits the thor-

ough atomization and burning of every drop of fuel supplied. The manifold carrying the carburetor is bolted directly to the cylinder block and the inward passages are given a downward slope from the carburetor through the valves. Perfect conditions for starting are assured since the raw gasoline flowing from a choked carburetor must prime every cylinder in the most effective way. The combination of gravity flow of the mixture and the hot manifold insures perfect distribution and complete combustion of the fuel.

In addition the shutters on the radiator, which are controlled from the dash, enable the driver to operate the motor at the most efficient temperature which is clearly indicated by the motorometer on the radiator cap. In the winter the louvre openings in the hood are covered on the inside with a plate, doing away with the necessity for the unsightly radiator covers seen in winter on so many cars.

"The result is an efficiency in operation which has made the Essex one of the most popular cars ever brought out, as is shown by the more than 12,000 already in the hands of their owners."

### Auto Batteries and Tires Are Alike; Both Need Careful Watch

The tires that relieve your car from the shock of the road, and the storage battery that supplies current for lighting and starting are similar in several ways to Elmer Rosegren of the Nebraska Storage Battery Company.

It's easy to see that there is a resemblance between the air held under pressure in the tire and the electricity held ready for service by the battery. In both the tire and the battery you are depending on common but invisible forces.

Of all points of similarity between tire and battery, however, the strongest is that of care required. Your tires, for instance, may go on mile after mile without giving you a bit of trouble. Then on a little stretch of rough road there may come a "pop" and you're on a flat tire. The tire was a good tire up to the minute it blew, and could have been repaired at small cost; but for weeks, perhaps, that spot may have been wearing deeper into the casing. These conditions are closely paralleled in the storage battery with electricity instead of air as the force to be held in check; and the insulation in place of the tire casing. When the battery is new the insulation is perfect just as a new tire casing is free from flaws. As time goes on some slight weakness may develop. If you watch your battery these can be taken care of at very small cost and no serious troubles will come up. No matter how perfect your tires

or battery are it pays well to keep your eye on them and stop the little troubles before they develop into big ones.

### "Drive Away" Holmes Cars from Long Distances Home

When automobile dealers "drive away" new cars from the factory to insure early delivery for purchasers they are showing their belief in the car, particularly when they drive as

far as from Canton, O., to Philadelphia, Pa., or to Chicago, Ill. Nearly every day this season has seen dealers from distant points arrive at the Holmes factory to take their cars back over the road. From Canton to Chicago, nearly 420 miles over the road, new Holmes cars, just out of the factory, have shown gasoline mileage per gallon as high as 22 miles average for the trip.

**WILLARD**  
STORAGE BATTERY  
TRADE MARK REGISTERED

## Decide on Your Next Battery NOW

Your next battery should be a Willard with Threaded Rubber Insulation because it is the one kind of battery that gives you adequate protection against the expensive *reinsulation* that is sure to come to an ordinary battery.

Four years' experience on many thousand cars have proven the remarkable durability of this latest Willard invention.

It eliminates the one biggest cause of battery troubles.

Call and let us tell you about it. We'll help you get every last day's use out of your present battery at the least possible expense, but we want you to have a better battery.

**Nebraska Storage Battery Co.**  
20th and Harney. Phone Tyler 2920.

# The DIXIE Flyer

## Immediate Delivery

### No Waiting — Drive Your Car NOW

The next three months is the most delightful period of the year for motoring. Vexatious delays rob you of health and pleasure. Our foresighted policy and the co-operation of the factory enable us to promise immediate delivery of the splendid new 1920 models of the new DIXIE FLYER.

The new DIXIE FLYER is a car of many refinements and improvements. Every essential that will add service, increase efficiency and economy and make it more complete as a **DEPENDABLE** passenger car is included in the specifications and list of improvements. An **ADVANCED** car at a price that the man of moderate means can afford to buy and operate.

**Dealers, Attention** Some valuable territory still open in Nebraska, Iowa and South Dakota. Get in touch with us at once and learn our liberal proposition and co-operative plan.

**W. R. NICHOLS MOTOR CO.**  
Distributors.  
2520 Farnam Street, Omaha, Neb.

\$1365 f. o. b. factory.      Touring Car or Roadster.

# Ford

## THE UNIVERSAL CAR

The Ford car can well be called the People's Car, because there are more than 3,000,000 of them in daily operation. That is about seven to one of the nearest follower in the motor car industry. This would not be so if the Ford car had not for sixteen years proven its superiority in service in durability, and in the low cost for operation and maintenance; this would not be so if the Ford car was not so easy to understand, so simple in construction that anybody and everybody can safely drive it. It is everybody's necessity because it doubles the value of time, and is the quick, convenient, comfortable and economical method of transportation. Leave your order with any one of the dealers listed below:

McCaffrey Motor Co., 15th and Jackson Sts.  
Sample-Hart Motor Co., 18th and Burt Sts.  
Universal Motor Co., 2562 Leavenworth St.  
C. E. Paulson Motor Co., 20th and Ames Av.  
Adkins Motor Co., 4911 South 24th St.