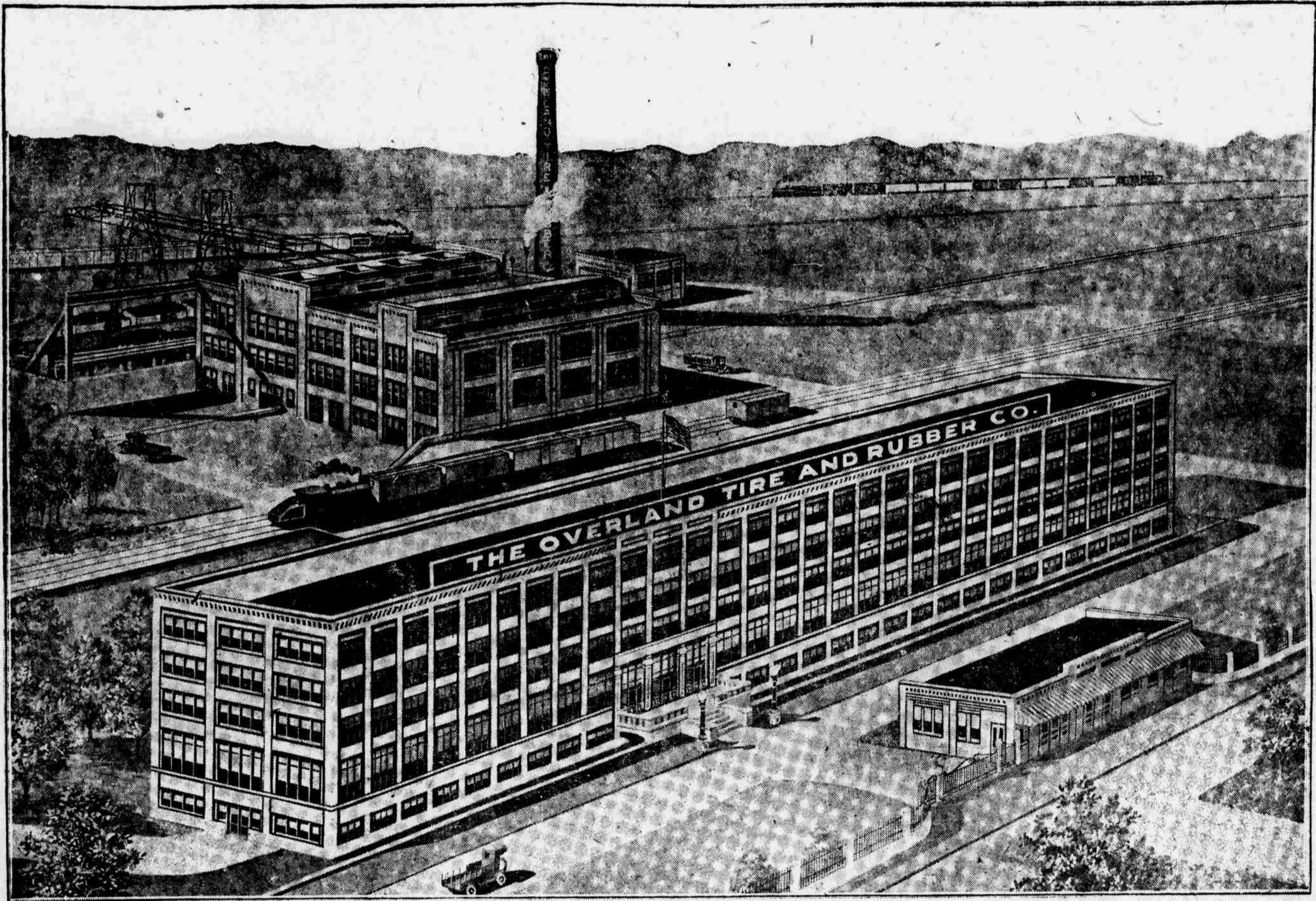


ONLY THREE MORE DAYS

IN WHICH TO PURCHASE STOCK IN THIS

Great Tire and General Rubber Goods Factory at \$12.50 Per Share

Next Monday Morning the price goes to \$15.00 per share. \$75,000 to \$100,000 of this stock will be sold this week. Mail orders are coming in from every direction. 3,000 Nebraska and Iowa citizens have already invested. Hundreds of others are on the verge of investing. To you, we urge you to hesitate no longer. Mail or wire your order today. Monday will be too late.



The factory, when completed, will be 75 feet wide, over 400 feet long and five stories high, comprising a floor space of over 150,000 square feet.

The most modern heating, lighting, sprinkling, watering, sewerage and elevator systems are being installed. When completed it will be fully equipped to take care of 1,000 tires and 2,000 inner tubes per day besides a full and complete line of all kinds of general rubber goods.

The first unit, which comprises the first and second floors, will be completed and put in operation within sixty days. The company expects to start with an output of 200 tires per day, and judging from the number of orders for tires already being received, they predict that before the factory is in operation ninety days it will have an output of 500 tires per day.

A Conservative Estimate Is That

An average output of three hundred tires per day
Will Earn a Dividend of 25% on Every
Dollar Invested in the Proposition

All Machinery Has Been Received

and an army of expert workmen are working overtime putting it in place in order to get the factory in operation at the very earliest moment.

WITHIN THE NEXT FEW DAYS

Great Shipments of Crude Rubber, Fine Fabrics and Compounds Will Begin To Arrive

Contracts Are Being Negotiated

with a number of the best and most experienced tire and rubber men of the east, who will be brought to Omaha to head the various departments. The company's instructions are to turn out the very best tire that can be made. Every effort is being made to get The

Overland Tire and Rubber Company factory in operation and on the greatest dividend paying basis at the very earliest moment.

The stock of this company is all common, issued fully paid, non-assessable and transferable.

The price is \$12.50 per share. Terms: One-half cash and balance in six months without interest.

If you are interested in investing in this, which we are striving to make the greatest tire and rubber goods factory west of Akron, Ohio, and backed by the best tire and rubber talent we can secure, you should hesitate no longer.

\$ 50 cash and \$ 50 in 6 months will buy 8 shares
\$ 100 cash and \$ 100 in 6 months will buy 16 shares
\$ 200 cash and \$ 200 in 6 months will buy 32 shares
\$ 250 cash and \$ 250 in 6 months will buy 40 shares
\$ 300 cash and \$ 300 in 6 months will buy 48 shares
\$ 500 cash and \$ 500 in 6 months will buy 80 shares
\$1,000 cash and \$1,000 in 6 months will buy 160 shares

FATHERS AND MOTHERS

Buy a few shares of this stock now for that son or that daughter and five to ten years from now you will have left them a legacy that will make them independent. Many fathers and mothers have already done this.

All orders placed in the mail or wired on Saturday will be protected on the \$12.50 price.

Mail This Coupon Today:

Overland Tire & Rubber Company,
919 W. O. W. Building,
Omaha, Nebraska.

Am interested in your proposition and wish to purchase shares of your stock on the payment plan. Enclosed is my check for the first half payment. Kindly mail me your non-negotiable note which is made for six months, without interest, for the last half, which I agree to sign and return to you.

Name
Address

The Overland Tire & Rubber Company

Rooms 919-920 W. O. W. Bldg., Omaha

Tel. Douglas 4125