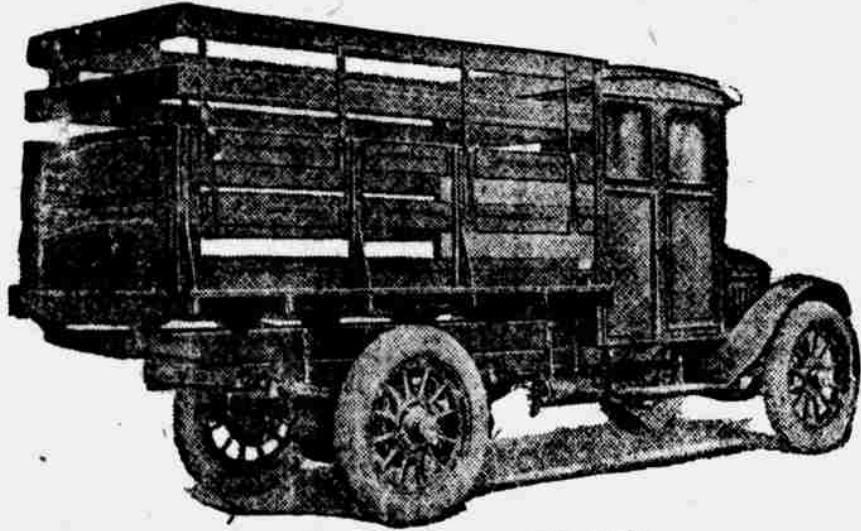


INVEST IN THE GREAT WESTERN COMMERCIAL BODY COMPANY

A RAPIDLY GROWING NEBRASKA ENTERPRISE



NO. 500-E MOUNTED ON 1-TON G. M. C.

THESE pictures tell something of the extent and variety of our line of work, while the growth of our business is shown in the fact that the bodies pictured here are only a few of the many we have turned out for satisfied customers the past six months. Each picture is from an actual job.

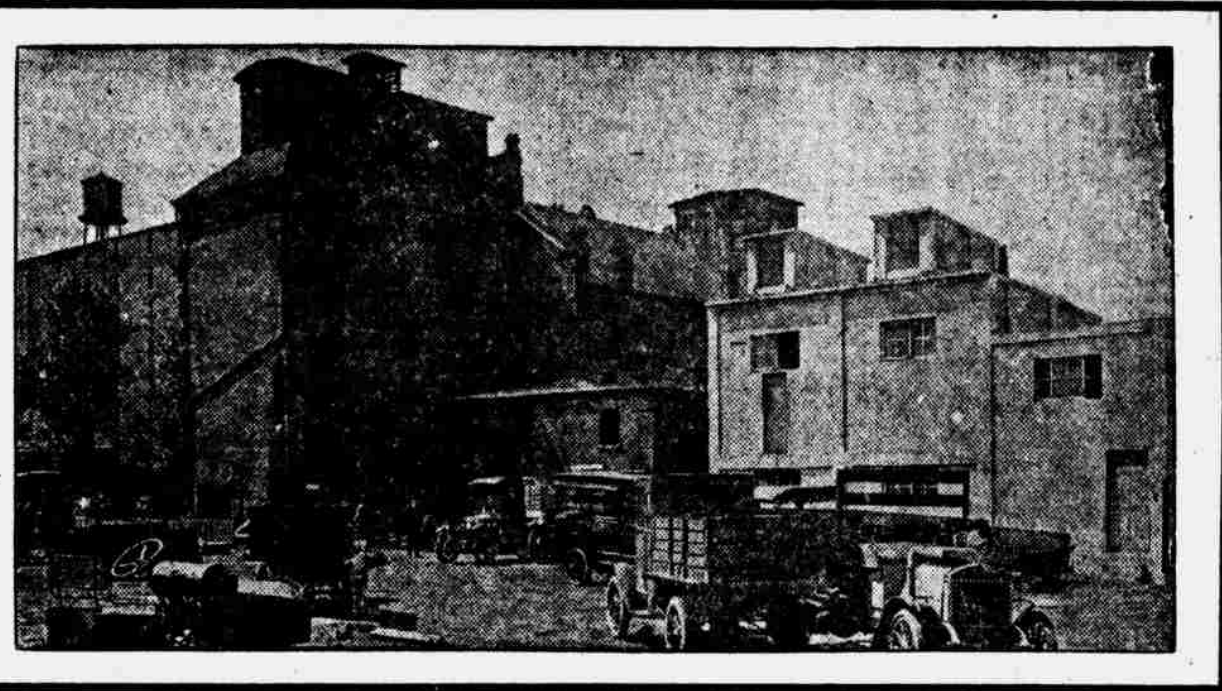
We build to order—in any shape, any size and any quantity. Our facilities and capacity are equal to any requirement, and we are constantly enlarging to meet growing demands. We make durability and dependability our first consideration. Our machinery equipment is right up to date. Our workmen are experienced woodworkers and body builders—several of them have worked at the finest kind of work as coach makers in the body-building plants of big automobile factories.



NO. 2012 ON FORD 1-TON TRUCK.

We use only well seasoned and selected hardwood lumber. Joints are machine mortised and put together in white lead—making them positively waterproof. Strap iron and bolts are used liberally, thus insuring a rigid body. Every job we turn out receives six coats of paint before varnishing, the beautiful and lasting finish of our bodies is a notable feature.

Everything that experience, workmanship, materials and right intentions can do to make a serviceable and satisfactory piece of work will be found in **Great Western Built-to-Order Truck Bodies**. The demand for better built truck bodies is constantly growing and we are constantly growing to meet the demand. We are here to help you make money in truck bodies by turning out goods that make **Satisfied Customers**—the best business-builder known.



OMAHA FACTORY BUILDINGS—SHOWING NEW BUILDINGS IN FOREGROUND
4TH AND PIERCE STREETS

This Company is Earning Dividends NOW

THE GREAT WESTERN COMMERCIAL BODY COMPANY is the largest concern of its kind West of Chicago, and is the fastest growing concern in the City of Omaha. During the past ten days this company has received from the Nebraska Buick Auto Co. of Omaha, Lincoln and Sioux City, contracts for over \$200,000.00 of truck bodies and cabs.

In addition to this contract the company now has orders aggregating over \$262,000.00, as well as a contract with one of the country's leading circuses for \$65,000.00 worth of special work.

From a working force of six and an output of about one truck body a week, and a pay roll of next to nothing, to a working force of 102 men, a pay roll of more than \$3,000.00 weekly, an output of ten Truck Bodies and ten Cabs daily, besides the other accessories manufac-

tured, is the record of the remarkable growth made by the Great Western Commercial Body Company.

The Omaha plant represents an investment of upwards of \$200,000, and the company is doing business in Nebraska and several adjacent states at present.

The Kansas City Plant contains over 20,000 square feet of floor space and started with 30 men.

On account of the rapid growth of this company and its need of additional manufacturing facilities, we were fortunate enough to secure 5,000 shares, which we are offering at \$12.50 per share.

This is an unusual investment opportunity to share in the profits of a going, growing company, which is NOW doing a remarkable business and making good profits.

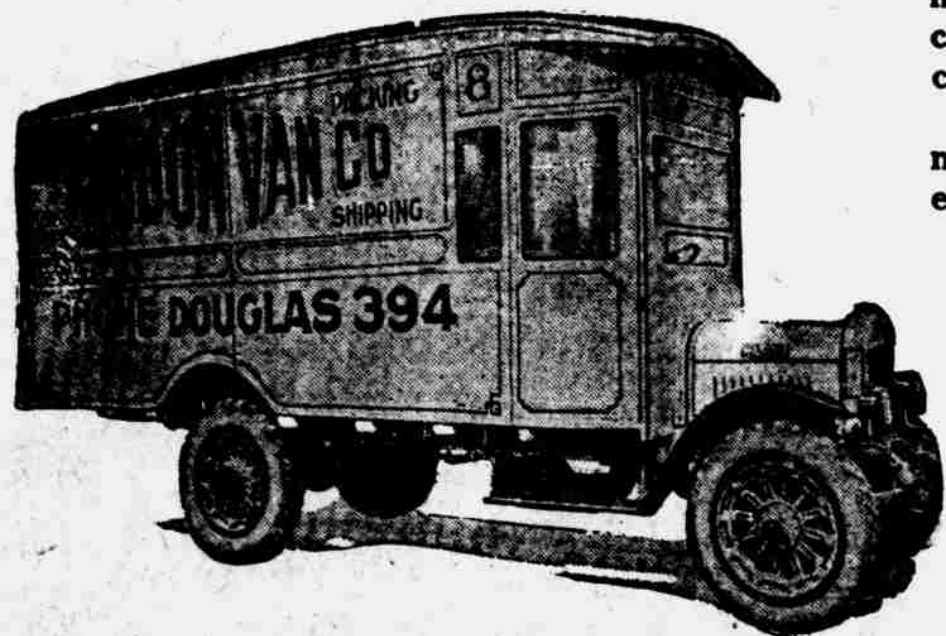
The stock of this company is fully paid and non-assessable and shares equally in all earnings. Remember, it's all COMMON STOCK. There is no promotion stock, no stock issued for trade marks, good will or for personal services, and every share of this company that is issued and outstanding is represented fully by concrete assets.

These shares will sell rapidly—therefore, immediate action is necessary if you care to participate in the profits now being earned.—

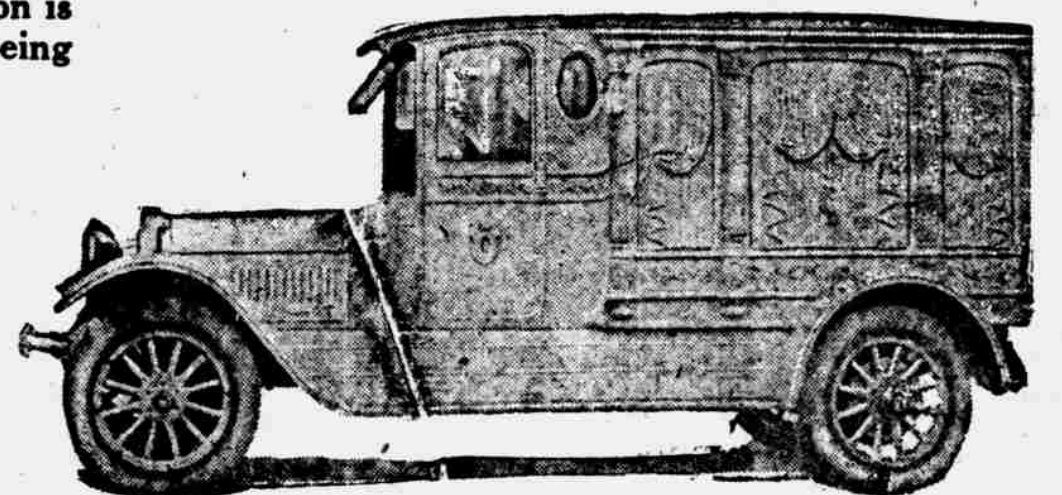
Kerrin, Gordon & Co.,
1002 and 3 City National Bank Bldg.,
Omaha, Nebraska.

Gentlemen:
As I am interested in Nebraska enterprises and have \$..... to invest, please send me without obligation on my part, full information regarding the Great Western Commercial Body Company of Omaha and Kansas City.

Name
Address
City State



NO. 1008 ON 2-TON MASTER TRUCK.



SPECIAL HEARSE BODY.