

# STUTZ COMPANY TO DOUBLE ITS AUTO FACTORY

Plans Completed for Enlargement of Present Factory to Cost \$800,000; More Output Desired.

Plans for additions, which practically will double the capacity of the plant, have been completed by the Stutz Motor Car Company of America, Indianapolis, and work will begin immediately on the erection of additional buildings, which, with their equipment will cost approximately \$800,000. Plans for the new buildings were prepared by Rubush & Hunter, architects.

Already workmen are excavating for the addition to the present motor plant which will double the capacity. The addition will be a duplicate of the present building and will be located on the corner of Tenth street and Senate avenue. Two additional buildings which will be similar to the present main building of the company at Tenth street and Capitol avenue, will be erected as quickly as possible.

It was announced yesterday by officials of the company that it had secured all the ground bounded by Tenth street, Senate avenue, Eleventh street and Capitol avenue with the exception of a small piece at Eleventh street and Senate avenue, which is owned by a colored church. A small church building is on the property. The remainder of the block will be improved by the company as quickly as materials and labor can be secured.

### Seek 50 Per Cent Increase.

Officials of the company said that it was the plan to increase the capacity of the plant by at least 50 per cent before the first of next year and that inside a year it was expected to double the capacity of the plant. At present the plant has a capacity of 3,000 cars annually. The company now is operating up to full capacity.

The decision to enlarge the output was made at a recent meeting of the board of directors. It is known, however, that the board has considered seriously the question of increased output for some time.

The addition to the machine shop or motor-plant will be 183 feet wide and 209 feet long. It will be one-story high and of brick construction. The two other buildings to be erected immediately will be four stories high and of concrete throughout, even floors and roof. One of these buildings will be situated north of the present main building and the other immediately back of it with a frontage on Senate avenue. All the buildings will be connected by closed passageways.

### Immense Floor Space.

When the entire plant has been increased it will give the company a total of 450,000 square feet of floor space. In addition the company is to install its own heating plant.

Recently 25,000 additional shares of stock were issued, making a total of 100,000 shares outstanding. The present officers are Allan A. Ryan, New York city, president; Frederick E. Garrison, New York city, vice president; George F. Lewis, New York city, secretary, and William N. Thompson, treasurer and general manager. Changes were made in the old organization with the resignation of Harry C. Stutz of Indianapolis as president recently. The announcement was made June 21 and took effect July 1. Before the resignation of Mr. Stutz, Mr. Ryan was vice-president of the corporation.

The first car to bear the name of the Stutz company made its appearance on the Speedway in Indianapolis in May, 1911. It made a wonderful showing that year and later in the year the Stutz Motor Car company was formed and a factory was established in a building on North Capitol avenue. Its capacity then was 500 cars annually. The first building of the present plant was constructed in 1914, which doubled the capacity and in 1917 a new building was erected, giving the plant its present capacity.

### Haarmann-Locke Move to New Home on Dodge Street

Among recent changes along the auto row is the move of the Haarmann-Locke Motor Co. to the new building on Twenty-fifth and Dodge.

"The growth of the Stutz business here made it necessary for us to seek larger quarters," asserts Mr. Locke, "and we now feel that we are housed in a location suited to handling such a car as the Stutz."

The arrangement of this new building affords a most attractive showroom and an excellent daylight repair shop.

In addition to the Stutz business the Haarmann-Locke Motor Co. intend to accommodate about 30 cars for storage.

Mr. Haarmann and Mr. Locke visited the Stutz factory at Indianapolis about two weeks ago in an effort to secure a shipment of the 1920 models. They were successful in securing these cars which will be here sometime the first of the week. These new models will be practically the first cars to grace the new sales-room floor.

### Omaha Realtors Make Many Large Land Sales

Several Omaha realtors are going rather extensively in the land business this year.

Among those who have made large deals are Wm. Colfax and Wilson & Warren, and Hastings & Heyden.

The Wilson & Warren firm, which has handled more than 10,000 acres of South Dakota land this year, has disposed of two and one-half sections in the last two weeks.

### Brick Flats Sold.

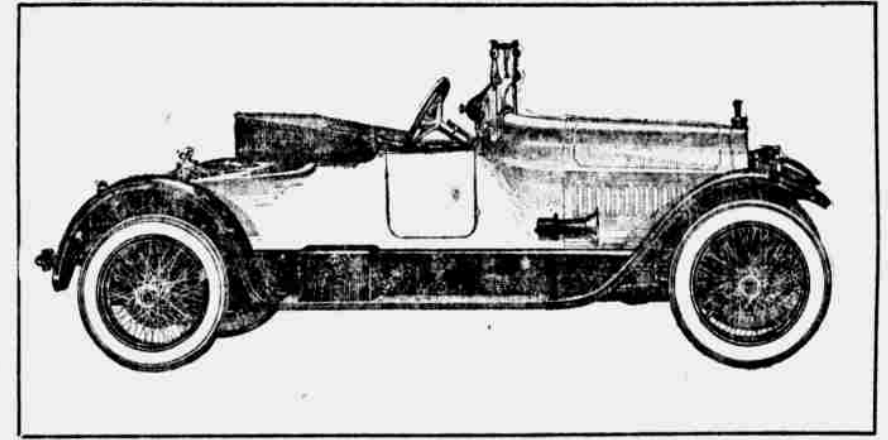
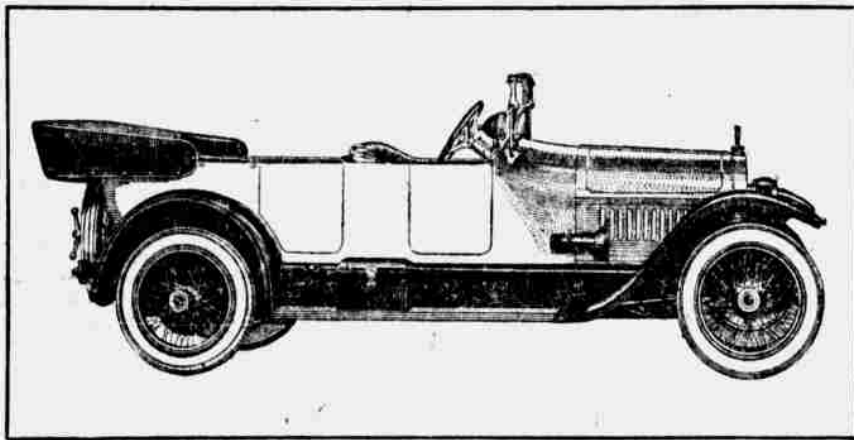
Six brick flats at Twenty-ninth street and Dewey avenue owned by F. W. Bonine of South Dakota have been sold by the Wilson & Warren company to George S. Martin of Des Moines for \$18,000.

These flats are among the oldest of this class of property in the city.



## The New Home

for



The steady growth of the Stutz business in Omaha has made it necessary for us to seek larger quarters for the accommodation of our sales and service organization.

Consequently we have built a new building at 2526-32 Dodge Street, where we will welcome an opportunity to show you the latest Stutz Models and facilities for "real" service.

For the present our new location affords us room for handling about 35 cars in live storage. We solicit your patronage.

# Haarmann-Locke Motors Company

2526-32 Dodge Street

OMAHA, NEB.

Phone Douglas 4320

