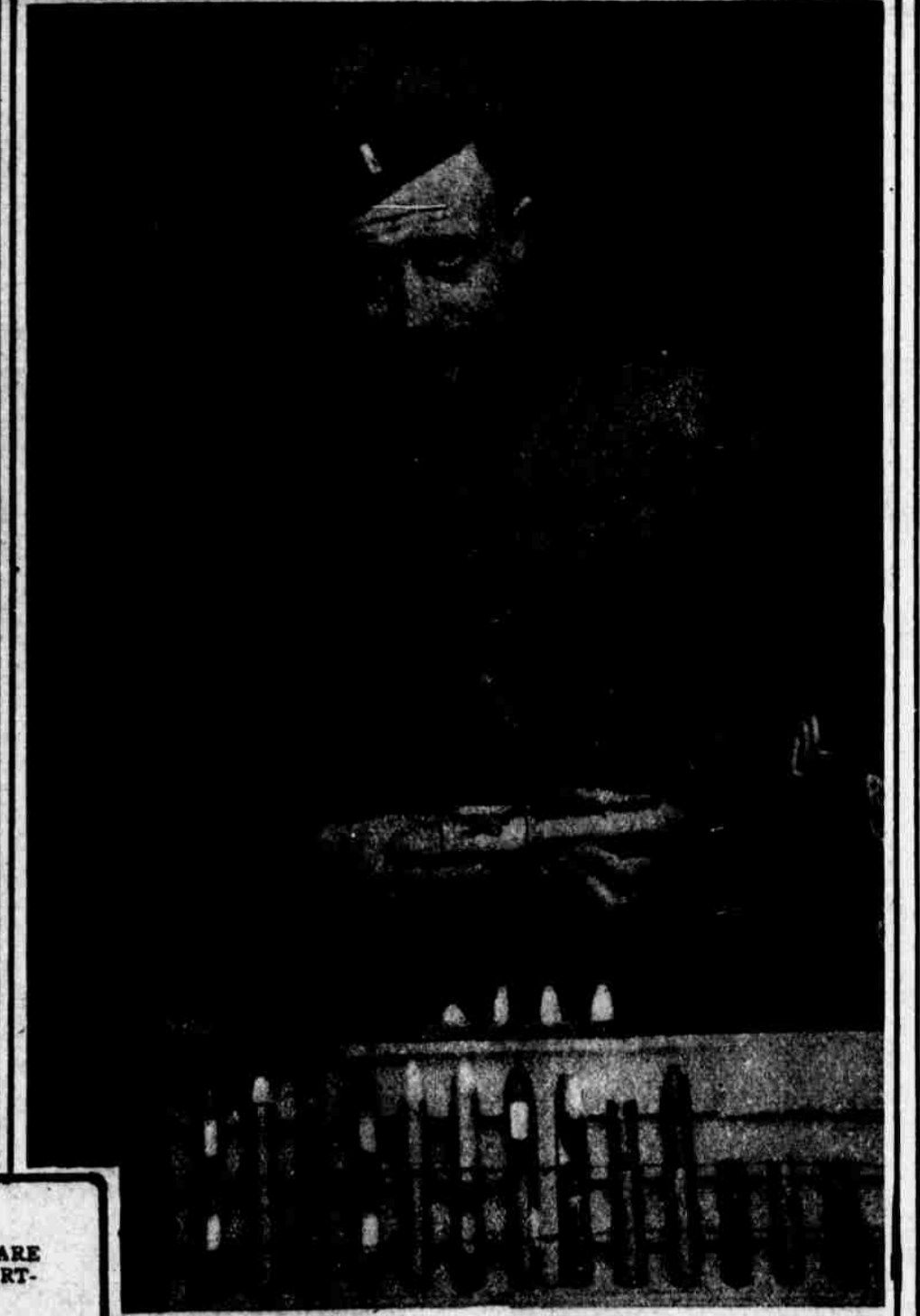
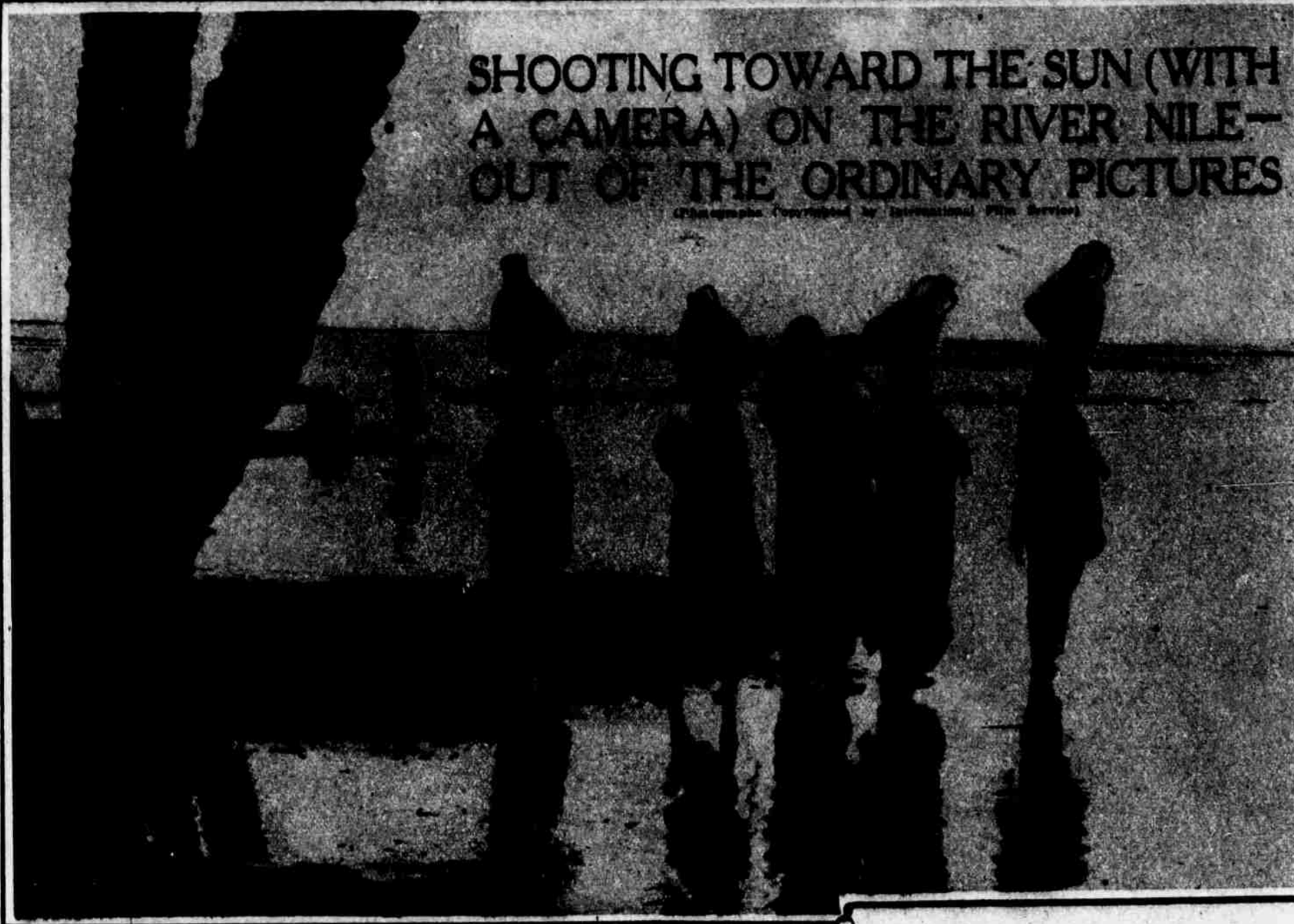


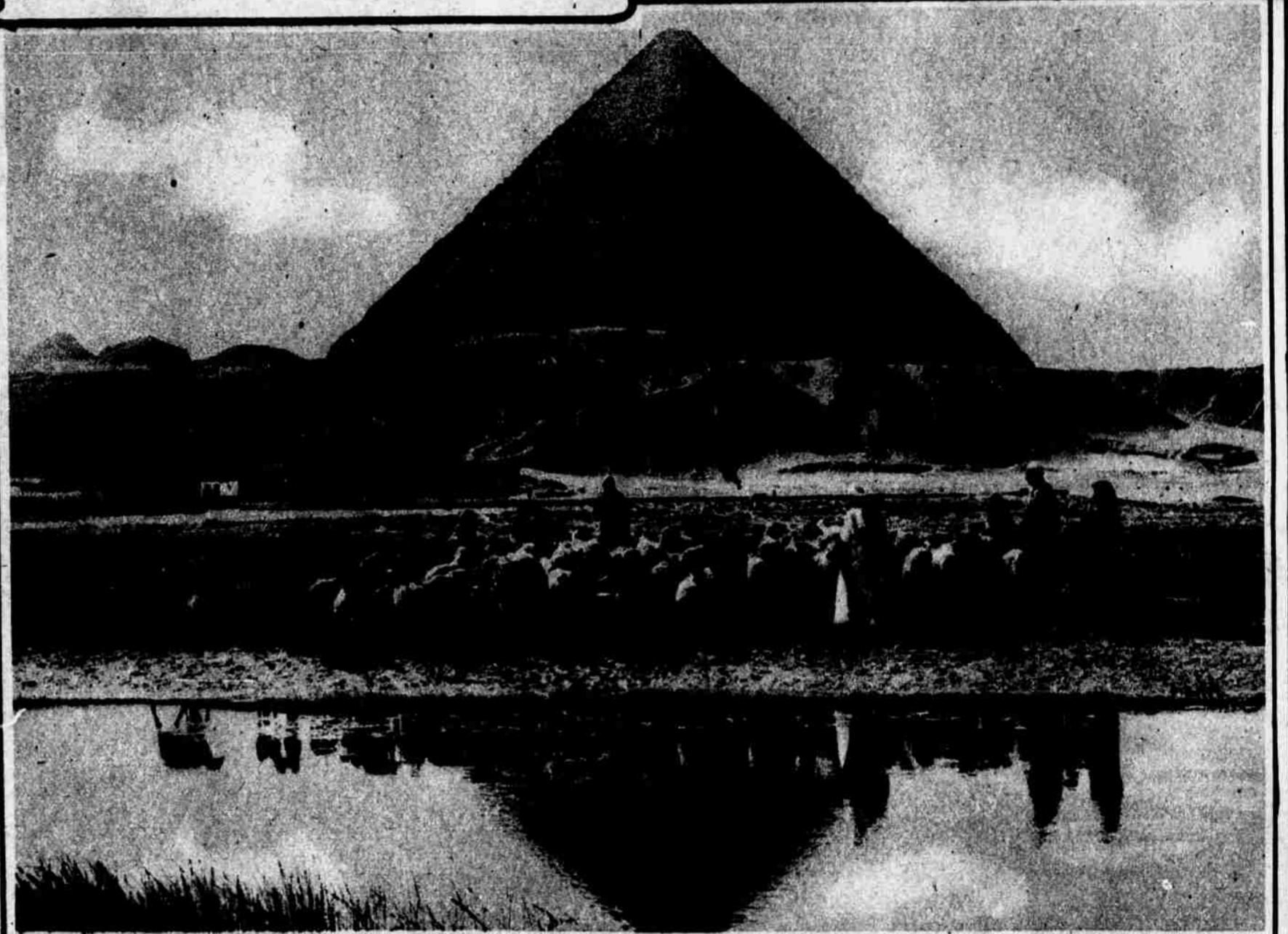
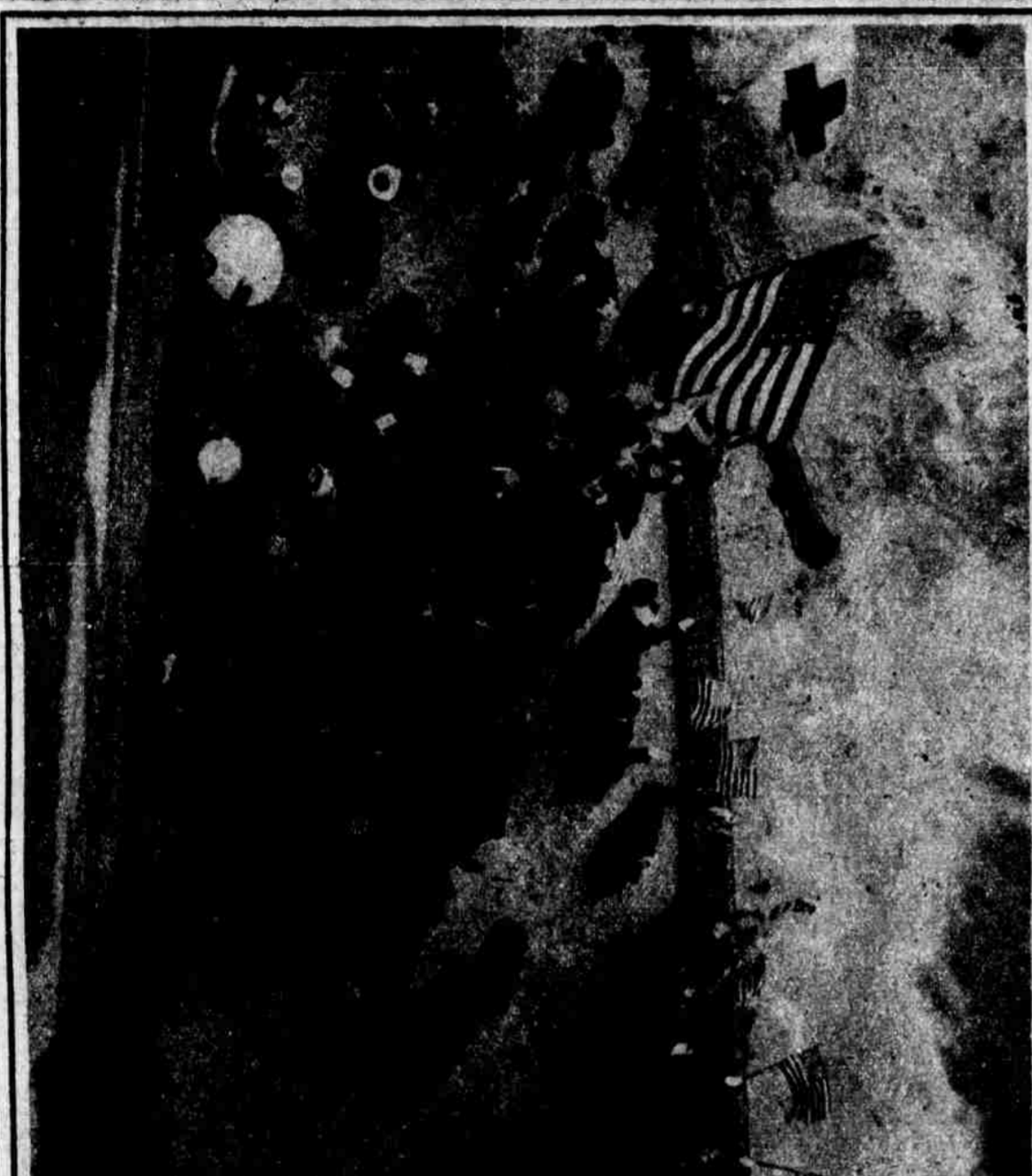
SHOOTING TOWARD THE SUN (WITH A CAMERA) ON THE RIVER NILE—OUT OF THE ORDINARY PICTURES

(Photographs Copyrighted by International Photo Service)



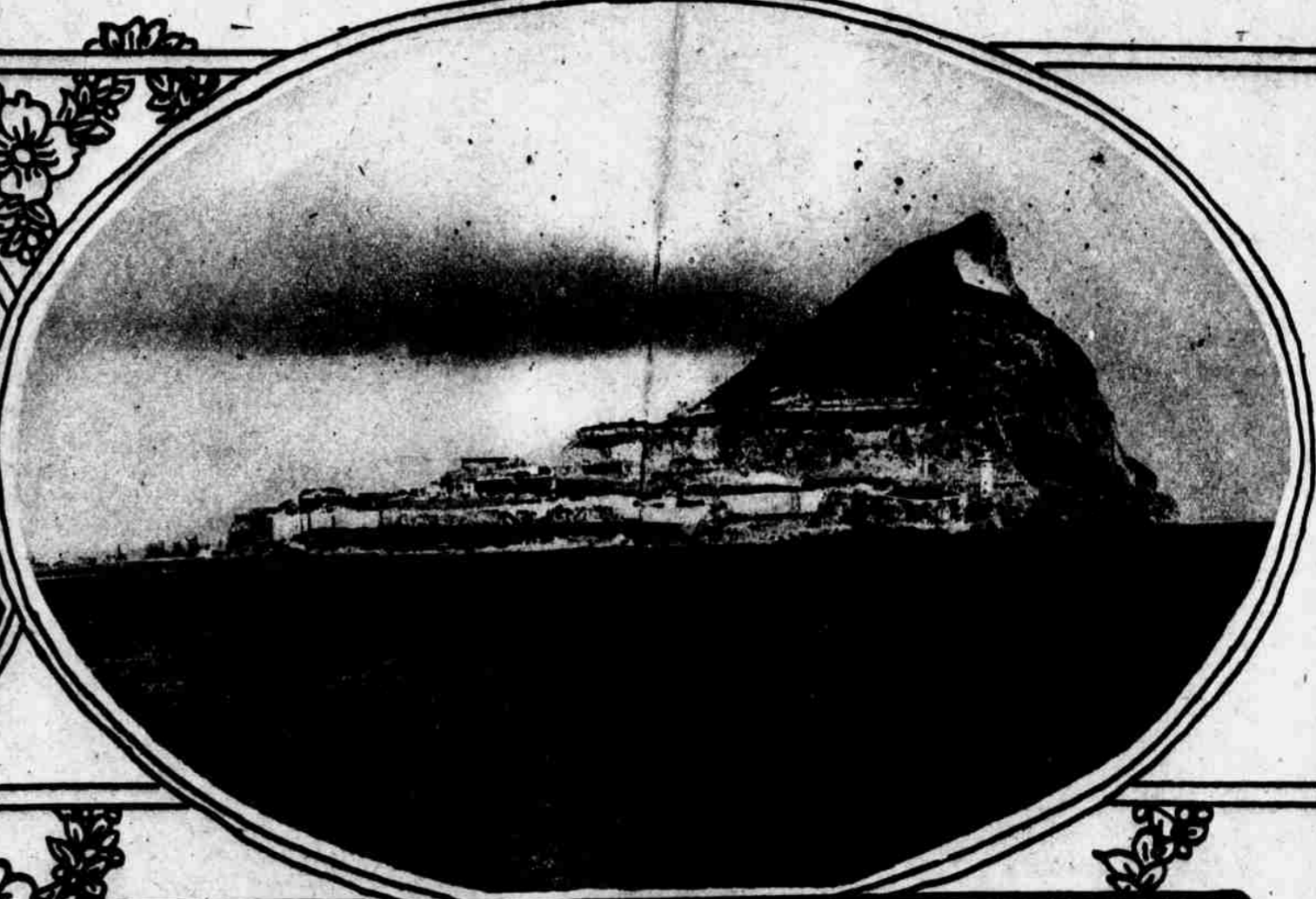
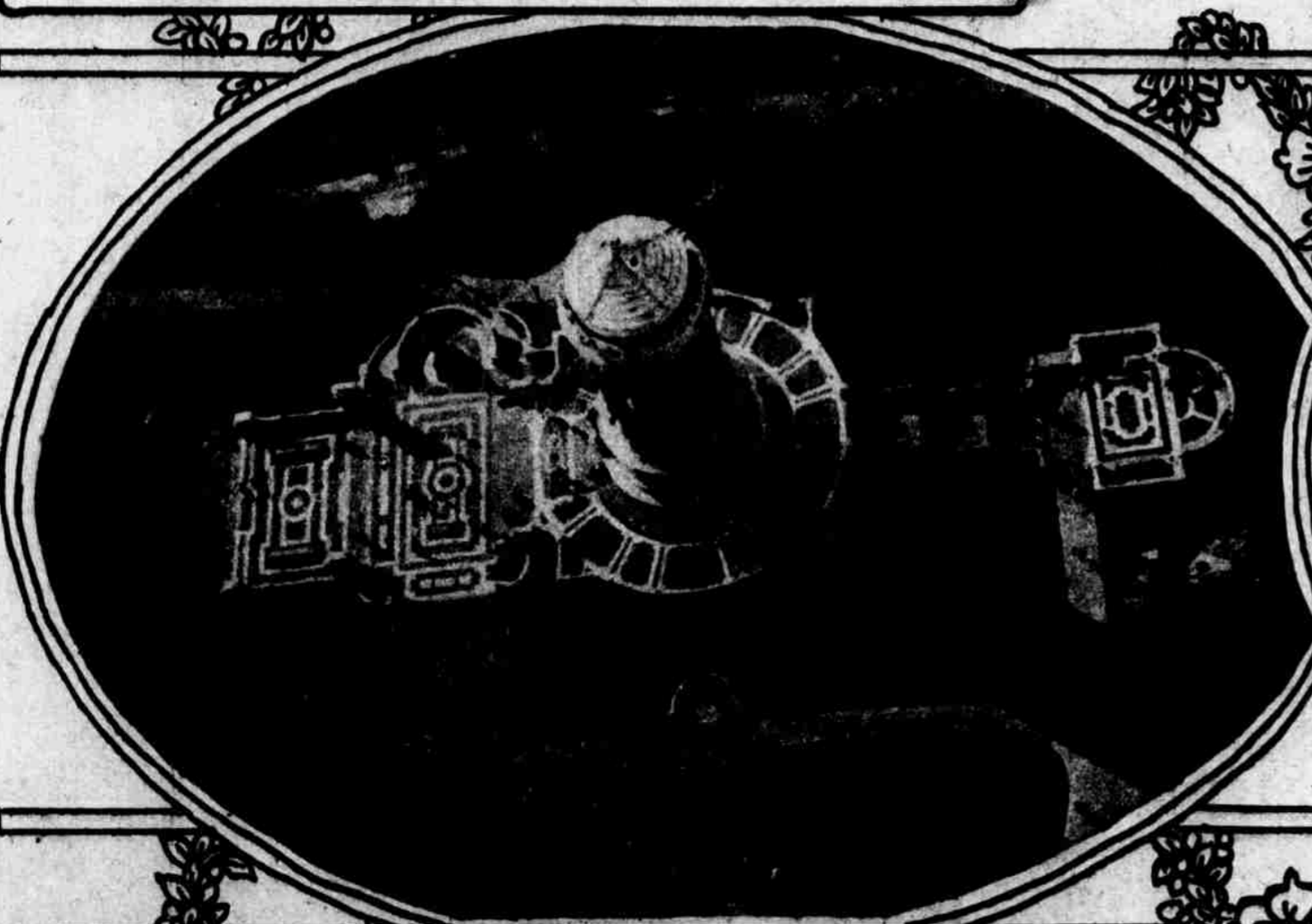
A MID-DAY STUDY OF WOMEN WATER CARRIERS ON THE NILE RIVER. AN ILLUSTRATION OF THE OLD SONG "IF THE JUG IS FULL—NEVER MIND THE ANGLE."

A BATCH OF 2 CM. GERMAN AIRCRAFT SHELLS THAT ARE BEING DESTROYED BY THE AMERICAN DEMOLITION DEPARTMENT AT MILHEIM, GERMANY.



THREE GUESSES—WHAT IS IT? AN EXCEPTIONAL PICTURE MADE AT THE EMBARKATION PORT AT HOBOKEN, WHERE THE TROOPSHIPS ARRIVE WITH THE BOYS FROM FRANCE. EVERY SHIP THAT PUTS INTO PORT IS GREETED BY RED CROSS WORKERS, SALVATION ARMY LASSIES, AND INNUMERABLE OTHER ORGANIZATIONS THAT ARE DOING THEIR BEST TO CARE FOR THE BOYS ON THEIR RETURN.

WINSTON SPENCER CHURCHILL, SECRETARY OF WAR FOR GREAT BRITAIN, IN A SPEECH DEFENDING THE MILITARY SERVICE BILL IN THE HOUSE OF COMMONS DECLARED THAT THE WHOLE OF EGYPT WAS IN A VIRTUAL STATE OF INSURRECTION. PHOTOGRAPH SHOWS PYRAMID OF CHEOPS.



SOLDIERS AND SAILORS MONUMENT ON RIVERSIDE DRIVE, NEW YORK CITY, AS IT APPEARED TO A PHOTOGRAPHER IN A PLANE FLYING OVER MANHATTAN ISLAND.

GIBRALTAR, GATEWAY TO THE MEDITERRANEAN, IS ONE OF THE FACTORS TO RUFFLE THE PEACE AND CALM OF THE PEACE CONFERENCE SITTINGS. IT IS NOW HELD BY THE BRITISH WHO HAVE IT STRONGLY FORTIFIED. THE ROCK WHICH TOWERS 1396 FEET ABOVE THE SEA CONTAINS MANY GALLERIES AND ROOMS CUT OUT OF THE SOLID ROCK. GIBRALTAR WAS TAKEN FROM SPAIN BY CONQUEST IN 1704 AND HAS REMAINED IN BRITAIN'S HANDS SINCE THEN.