

THE BEE'S BUILDERS PAGE FOR 1919

A Greater Omaha--a Greater Nebraska--the Thought of All

HOME BUILDERS' BUILDING READY FOR ITS TENANTS

Location of New Structure Best Possible in Omaha; Home Firms Favored in Contracts.

The new seven-story twin building at Eighteenth and Dodge streets, was erected and financed by the Home Builders' insurance, for a local syndicate. As courtesy to the Home Builders and in consideration of them taking a long time lease on the ground floor office space the syndicate gave Home Builders the privilege of naming the east building the "Home Builders' Building."

The Home Builders and the American Security will move their offices from the Brandeis Theatre building the latter part of June to their new location. The J. F. Bloom company, the Courte-Aldous-Hunt company, the Orchard & Wilhelm company, all Omaha firms, have secured the contracts for the fixtures, the office furniture and the draperies and rugs of the firm.

Advantage of Location. Eighteenth and Dodge streets is only two blocks from the post-office, the court house and the city hall, one block north of the Fontenelle hotel and across the street from the Douglas Printing company. The Dodge street car passes the office door direct from the union depot and provides connections with every other car line from all parts of the city and suburbs. Eighteenth and Dodge streets is only two blocks from the principal retail section of Omaha.

All furniture and fixtures will be finished in walnut. All draperies and rugs made to match. Every office appointment is designed for beauty, comfort and efficiency of customers and employees. The most up-to-date ideas adopted in the newest buildings and offices of the largest cities, including New York City, Philadelphia, Chicago, San Francisco, Los Angeles, Portland and others, have been carefully studied and assimilated into the new offices of Home Builders by Mr. Rohrbough, vice president, who has visited these cities to get the latest ideas of building construction, office equipment and arrangement.

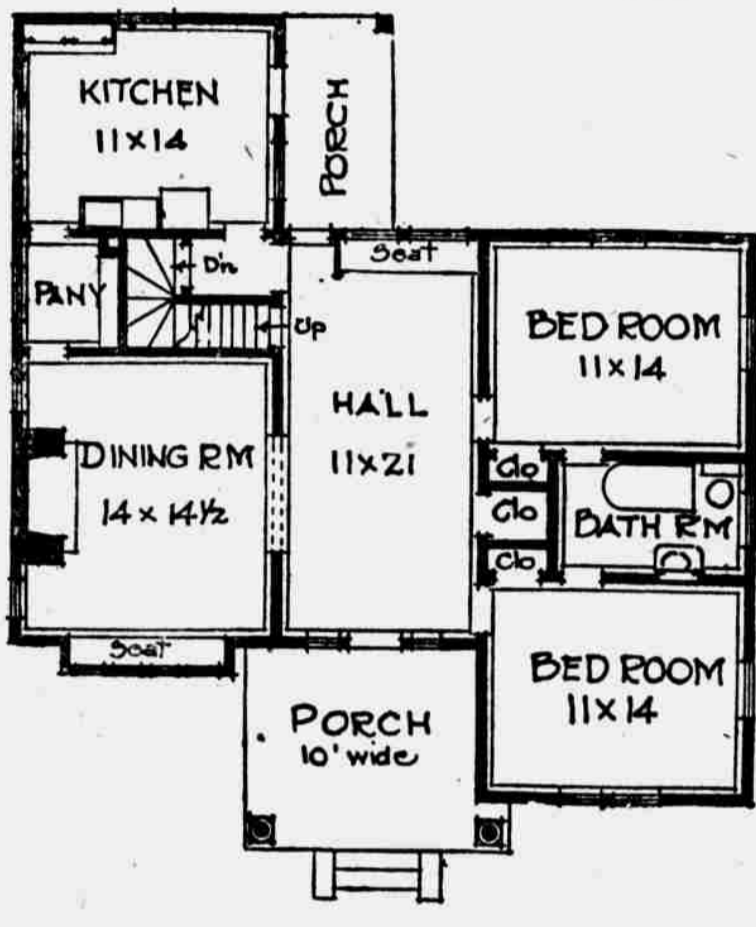
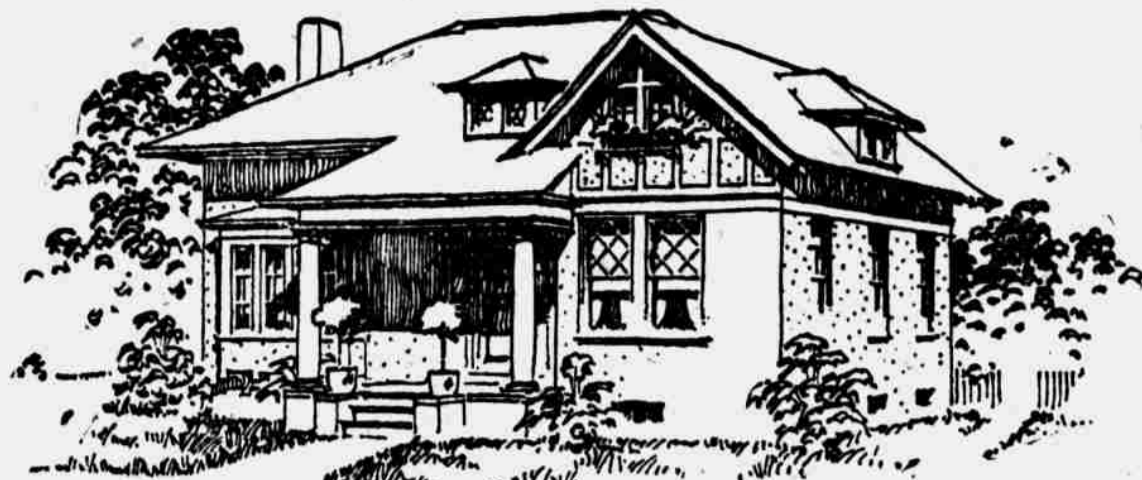
Much Heat, Well Shut In Cooks Food in Fireless
To cook food well in a fireless cooker means that plenty of heat must be shut up with the food. Food that is made as hot as possible on the stove and then put immediately into the cooker, stays hot and keeps on cooking. The walls of the fireless cooker keep the heat in just as the walls of a good refrigerator keep the heat out.

Some suggestions for economy in the use of the fireless cooker are made by Mrs. Nellie Kedzie Jones of the agricultural extension service of the University of Wisconsin. Have the food and the soapstone disks as hot as possible when they are put in the cooker, says Mrs. Jones. If the food that requires long cooking cools before it is finished, reheat it and return it to the cooker. Reheat the food before serving, if necessary. If only a small quantity of food is being cooked, it cools quickly. To avoid this, either the disks may be put in, or a small vessel containing the food may be placed in the regular cooking vessel and surround with hot water. Soapstone disks increase the usefulness of the cooker. They can be heated hotter than the boiling point of water and when shut up in the fireless furnish heat to cook the food. With one disk below and one above the cooking vessel, meat may be roasted, and bread or puddings may be baked. Without the disks, the fireless will cook only foods that can be cooked in water, such as cereals, beans, pot roasts, stews.

Yanks Serving Time Denied Cigarettes for Offenses

San Francisco—Soldiers convicted of military offenses and confined in the United States disciplinary barracks on Alcatraz Island may not smoke cigarettes, according to regulations issued recently. Officers and enlisted men who act as guards and who drill the men may smoke whatever they like. The prisoners may smoke only pipes or cigars.

AN ATTRACTIVE BUNGALOW



FIRST FLOOR

This bungalow, a one and-a-half story design, is quaint and home-like. A large hall through the center divides the living rooms from the sleeping apartments. As shown, the first floor consists of a large hall, dining room, pantry, kitchen, two bed rooms, bath and ample closets. There are front and rear porches. The second floor can be made into two bed rooms.—Clyde Smith Adams, Architect.

Poisoning House Ants Is Best Way to Control

First find the trail to the ant nest, or the nest itself; then destroy the nest or place poison along the trails. This is the advice the economic entomologists of the College of Agriculture are giving to the many housewives who are writing about the unusually large number of house ants this spring. The treatment is equally effective for large or small black ants, red ants or the tiny yellow ants. If poison sweets are set along the trails, the ants will carry poison to the nest and feed it to the laying queen and brood before they die of the poison themselves. This will completely do away with the ants. The poison mixture is one part of tartar emetic to 10 parts of sugar dissolved in 100 parts of water, or combined with cold lard or some such grease so that it will not evaporate rapidly. The poison should be spread on chips of wood or pieces of glass and placed on ant trails out of the way of pet animals. Where the trail to the nest is easily found the ants can be entirely destroyed by applying carbon bisulphide to the nest towards dusk, when the workers are at home. With a stick make three holes from three directions on the edge of the nest and towards the center. As quickly as the stick is withdrawn each time, pour in an ounce of the poison and immediately close with damp earth so that neither ants nor gas can come out. Wet sacks laid over the nest will help hold the fumes. (Carbon bisulphide should be handled carefully, as it is highly inflammable.) Ant proof cupboards and removing of attractive food from the reach of ants will cause the ants to stop working in the house, as a rule.

Hubby Would Dress Her Like Old Woman; Wants a Divorce

Reading, Pa.—Clothes may not make the lady, but they certainly make the divorce courts work overtime sometimes, as attested by two divorce suits filed here. The allegation that her husband wanted her to dress like an "old woman" is the basis of the suit of Mabel E. Heckman, 21 years ago in Allentown, while a razor operation, said to have been performed on his wife's best attire by Harry J. Bush, to the detriment of her matrimonial joy, is the background of a similar action taken by his spouse, Nettie C. Bush.

Ghost On Rampage In an Irish Home

Dublin.—Hundreds of people are flocking to the home of a protestant family, near Omaha, where the district is in ferment as the result of destructive daylight raids by a "ghost." The trouble began last September when bricks began to fall down the chimney and ornaments were broken without visible agency. In the past few weeks the activities of the "ghost" have greatly increased. Windows are broken, pots smashed, bricks come tumbling down on the floor and disappear. While the frightened owner was looking at his clock the hands disappeared.

Greek Letter Men Are Kept Track of During the Big War in France

By ALBERT B. ELLIOTT.
New York, June 28.—How one college Greek letter fraternity kept track of its thousands of men in the American expeditionary force; held fraternity meetings in tents, barns, secluded ravines and other improvised quarters, often under heavy shell fire; initiated men in France, who had left chapters in this country to join the army before they had attained to full membership; and actually held a chapter meeting and an initiation in an ancient castle on the Rhine, is the story told by William C. Levere, of Evanston, Ill., late Y. M. C. A. secretary and national secretary of Sigma Alpha Epsilon. His auditors were a group of several score New York businessmen, alumni of S. A. E. chapters in over 30 states, who gathered to hear this tale of fraternity life so weirdly

different from anything they had known "in the old days." "Billy" Levere, as he is affectionately known to the 20 odd thousand "Sig Alphas" in this country, saw 20 months "Y" service in France during which he was stationed successively at Neufchateau, Tours, at the front, in England and at Andernach on the Rhine with the army of occupation. "My first day on duty at Neufchateau," he said, "a young lieutenant came in whom I spotted as a college man. Upon inquiry, I found that he was an S. A. E. from a middle western chapter. 'I know your national secretary, Billy Levere,' I remarked. 'Yes, I know him well,' replied the young officer. 'We talked a few moments longer, when I remarked: 'I'm Billy Levere.' My uniform had been a perfect disguise, for I later remembered having visited this man's chapter less than a year before, and he knew me quite well.' In this subsequent 20 months' work, "Billy" met hundreds of the diamond-

shaped S. A. E. pin. He encountered them in billets, in training areas, at aviation and artillery schools and up in front line trenches. Whenever a few of them happened to be in the same section, fraternity meetings were arranged. These were attended by officers as well as privates, and were staged in tents, ruined houses and any shelter that was to be found. Failing even these, groups of S. A. E.'s met at night outdoors in some secluded spot. "Pigeons Come Promptly to Morning Meal at Nine" New York.—One doesn't need a clock to tell when it's precisely 9 a. m. in the office of Assistant District Attorney James Smith, on the third floor of the Criminal Courts building. For at just that precise hour every morning a flock of pigeons alights on the window sill looking for breakfast. And the birds are never disappointed. Corn and other grain and bread crumbs, with peanuts sometimes for dessert, invariably await. Then they top off with a drink of distilled water—no

common, garden variety of water for those birds—and they fly away, not to be seen again till the next morning. "Ike" Van Leer, who for years has been confidential clerk in Mr. Smith's office, is the one to whom the pigeons are indebted for their daily breakfast. At first only a couple of the birds paid regular daily visits to the Criminal Courts building, but now, according to Mr. Van Leer, "there's a whole flock." They consume almost 10 pounds of corn a week, not to mention the distilled water. "Egg Travels From Ohio All the Way to England" Bellefontaine, O.—Mrs. C. F. Schumacher, living near this city, sold a crate of eggs last spring and on one of the eggs she wrote her name and address. She has received a letter from Miss Bertha Ramsden, 22 years of age, of Bellevue, Wakefield, England. The English girl said she was working in a munitions factory at the time she purchased the autographed egg.

Read This Money-Saving Announcement

1/2 TO 1/3 COAL SAVED WITH MORE HEAT

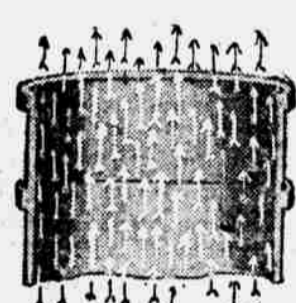
Mighty hot weather to be talking about "heat"—but next winter must be looked out for. And an opportunity to insure perfect heat for your home—with a saving of from 1/2 to 1/3 on Coal actually is offered you NOW through the



A PIPELESS HEATING SYSTEM! The entire heat output of the coal you burn is given direct to the air that heats your home. Not only have you more EVEN heat; but MORE HEAT; WE WILL SHOW YOU FACTS AND FIGURES, PROVING THAT YOU CAN SAVE COAL TO THE AMOUNTS GIVEN ABOVE!



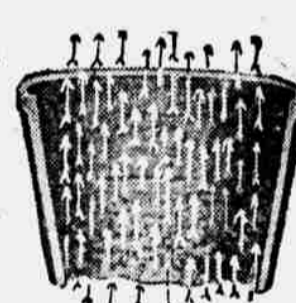
THIS FEATURE SAVES YOUR COAL!



24-inch Top Diameter. 570 sq. inches Grate Area.

The one feature of the De Vol's Syphon System illustrated here, effects a worth-while coal saving. Notice the fire-pot to the left. The side-walls are vertical—and the draft passes up them, clear to the top, burning ALL the coal. That, mind you, is De Vol's Syphon System. To the right we show the fire pot

from the average furnace—with the walls SLOPING inward at bottom, as shown. You can see for yourself that the draft misses that part around the upper edge. Dead ashes accumulate on this slope—and Radiation and heat units are lost. And BOTH COST REAL MONEY. It will surprise you to know what amount of your coal is wasted in this one way, alone.



24-inch Top Diameter. 400 sq. inches Grate Area.

PREPARE NOW!

Now is the time to think of these things. If you wait till later in the year, labor will be scarce; costs will likely be a good deal higher. And during the long, cold months of Winter it will be too late. We cannot hope to give you even a good idea of this new, better heating plant in this advertisement.

But—if you'll just write, or phone, or use the coupon printed here for your convenience, we'll send you illustrated and fully descriptive literature. And—if you'll just send a rough floor plan of your home, we can estimate about the cost of changing from the present unsatisfactory, wasteful system to this new and perfectly satisfactory plan.

Pay As You Use If You Choose

Payments can be distributed over a period of one year. Or the full cash discount will be allowed if account is closed by September 1st.

Liberty Bonds Taken at Full Face Value!

P. C. DEVOL HARDWARE COMPANY

504 Broadway and 10-12 Main Street. COUNCIL BLUFFS, IOWA

DEALERS.—Correspondence invited. We will give you the benefits of our advertising direct after August 1st—when list of all dealers will be printed in each ad. Write for our Co-operative Service Plan.

MAIL THIS COUPON

P. C. DeVol Hardware Co., Council Bluffs, Ia.

Gentlemen: I wish to have further details on your SYPHON SYSTEM furnace.

Name

Address

Town State

Like the Homes You See in the Movies

Something unusual—a home that's distinctive—that's the result of building with KELLASTONE. Whether you build a cottage or a mansion—a business block or a stately public building you'll find a real fulfillment of your most exacting specifications in



It's the original magnesite stucco—a scientifically balanced composition of minerals free from Lime, Gypsum or Portland cement. KELLASTONE remains true to its original color and consistency in all weathers. Absolutely water and fireproof—will not crack, crumble or chip, sets hard as granite rock. Conserves fuel, reduces insurance and general upkeep cost. KELLASTONE keeps out the winter's cold and the summer's heat—it's a perfect insulator. As an over-coating for run-down buildings KELLASTONE renews the building's youth. It can be put on over wood or brick without disturbing the occupants. Transforms the time-worn into a modern structure. See our book "The Story of KELLASTONE."

National Kellastone Co. CHICAGO, ILLINOIS MANUFACTURERS

Boyer-Van Kuran Lumber & Coal Co., Distributors., 24th and Boyd Sts. Telephone Colfax 80. Chas. W. Larson, Contractor. Douglas 1151. 4536 Burdette St.

REX MIXERS & PAVERS
Sunderland Machinery & Supply Co. Omaha

HEAVY HOISTING
E. J. DAVIS
1812 FARNAM ST. Tel. D. 363