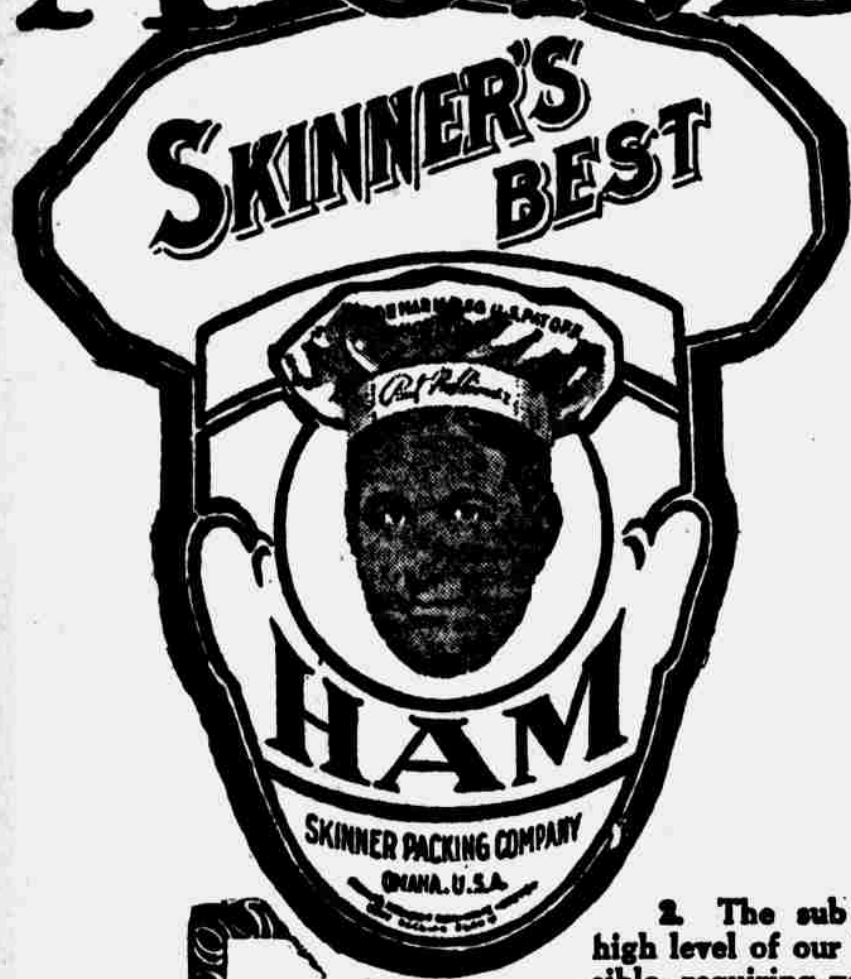


A GREAT PACKING PLANT

AND OF DIRECT INTEREST TO EVERY FARM TRIBUTARY TERRITORY, AND OF BENEFIT



We are now working on the eighth floor of the Skinner Packing Company plant, the most modern and efficient packing plant in the United States. This is the last floor and the roof will be on the plant within 15 days. Machinery is now coming in and being erected. The outstanding features of the plant, which is located just south and west of Swift's on the South Side, Omaha, are as follows:

1. A most complete modern packing house under one roof without the familiar packing house ODOR. Sanitary and fire-proof construction throughout, equipped to condense and burn all obnoxious vapors and gases. Could be placed in the downtown district without objection or annoyance. All departments are logically arranged to secure maximum efficiency at minimum operating cost.
2. The sub-basement cold storage; the only one in the United States. The high level of our building site above the South Side drainage system made this possible, requiring very little refrigeration and providing storage space for four million pounds of cured meats on the ground floor. This is pronounced by packing house men as a distinctive feature and very desirable.
3. Enclosed concrete and brick refrigerated car loading docks for sixteen refrigerator cars with overhead car icing facilities. The finest wagon and auto truck loading dock and court in the United States.
4. Large steel tanks in cold storage for carrying lard in bulk from a period of large production to a period of small production and large demand.
5. Beautiful monotone exterior design, most modern and appropriate for industrial plants engaged in food production. Red matt face brick exterior with pilaster and panel effect and white enamel terra cotta trim and coping. Killing floor and food producing departments finished with white enamel brick and quarry tile.
6. Located on our forty-acre tract outside of the congested South Side adjoining the Union Stock Yards to the south. Union Pacific, Rock Island, and Union Stock Yards railroads and driving chute connections. Six-foot sewer running through our property connecting with the sixteen-foot South Side trunk sewer.



ROBERT GILMORE.
Secretary of the Skinner Packing Company, also Secretary of the Skinner Manufacturing Company, the world's largest distributors and manufacturers of Macaroni Products.



PAUL F. SKINNER
Chairman of Board, Skinner Packing Company, also President of the Skinner Manufacturing Company, the world's largest distributors and manufacturers of Macaroni Products. President Skinner Baking Company, wholesale bakers.



CHARLES F. KAMRATH
Vice-President and Manager Skinner Packing Company. Twenty-five years' experience in Packing business. Formerly, Manager Armour & Company's present plant, Spokane, Washington.

7. Plant occupies over eleven acres of floor space, has eight floors which includes basement and sub-basement. Over 430 feet long and 236 feet wide including enclosed loading docks and in addition, garage and dining room for men and women, three stories, size 53x60. Also general office three stories and basement, top floor to be occupied by government inspectors, size 53x60. Entire plant built to double without losing any efficiency and preparations made for doubling.

8. The Vice-President and Manager of the Skinner Packing Company is Mr. Charles F. Kamrath. He has had twenty-five years' experience in the packing business; was formerly manager of Armour & Co.'s plant at Spokane, Washington. He is financially interested and permanently located with the Skinner Packing Company

One of the strongest endorsements of the Skinner plant is the following interview that appeared in The Omaha Bee, Thursday, April 24, 1919, given by Dr. Frank P. St. Clair, traveling inspector of packing industries for the Bureau of Animal Industry, Washington, D. C., and Dr. Herman Busman, U. S. government inspector in charge of the South Omaha station, who has 165 men in his department. Dr. St. Clair had this to say: "I have been in close touch with the Skinner plant from the time excavation started and everything that is done is in perfect accord with government regulation and with the idea of maintaining the best sanitary conditions and economic carrying on of the business. Without a doubt the new Skinner plant, when completed, will be the most modern and best designed plant I have ever visited, and it will be pointed to as a model of design and construction."

Dr. Busman had this to say: "From the slaughtering floor through all the various processing departments, economical operation, light and sanitation have been given first consideration and in this they have been successful. I want to point to the employees' welfare department. This is a department in which the bureau is especially interested in that we are constantly demanding better working conditions, dressing room and toilet facilities. The Skinner Packing Company is not only complying generously with our suggestions, but is going farther to protect the health of their employees and the public than we could legitimately demand."

"The government requires that no person afflicted with a contagious disease be permitted to handle food products. The management proposes to go one step farther by having every employee examined and treated by the company physician and nurse; provide lunch and rest rooms for female and male help; well appointed and comfortable dressing and toilet rooms with maximum light and ventilation. A modern laundry will be installed where all the outer garments of employees will be laundered free of charge every day."

New Wholesale Market and Produce Department.

The Skinner Packing Company established their Produce Department in their own building at Twelfth and Douglas Streets in July, 1918. The business has met with phenomenal success and we are doing a large and profitable volume of business, but as yet have merely scratched the surface as to this department.

The Produce Department is under the management of Jules H. Rosenbaum, a man of years of experience in the Produce business.

On June 1st, we will move our produce department temporarily to the old Kirchbraun Creamery building on Howard Street where it will be conducted while we are erecting our new wholesale market and produce building. All the tenants in the Metropolitan Hotel will move on June 1st. We will at once start wrecking this building and will erect on this corner a new modern eight-story and basement, re-inforced concrete building, 99x132 feet with trackage. First floor, which is 22 feet high, will house our wholesale market and produce department office. The basement will be used for dry storage; the next five floors will be cold storage and the two top floors will be used for handling egg, chicken picking, and chicken feeding. This building and the Produce Department are owned by the Skinner Packing Company.

This up-to-date branch house will give the Skinner Packing Company an inevitable standing and an opportunity to give the local retailers of Omaha and Council Bluffs real service. There is a shortage of cold storage space in Omaha and if the Skinner Packing Company desires to lease any space it already has been spoken for.

Omaha, Neb., March 17, 1919.

Paul F. Skinner, Chairman of Board,
Skinner Packing Company, City.

Gentlemen: Was quite agreeably surprised to learn that you are contemplating a cold storage warehouse to be erected on 12th and Douglas streets. This only goes to show that you are familiar with the needs in this locality. For the last two or three years we have found it a difficult matter to secure the necessary storage space.

For your information we have paid out the round sum of \$25,000.00 last year for cold storage charges. Practically all of this was paid to cold storage houses located in other states.

Might also add that location selected by you is an ideal one; it is situated in the produce center and wholesale district where it is easy to get to and from, and have every reason to believe that you will have your house full thirty days after you have opened for business.

Trust this enterprise contemplated by you will be pushed through at early date as possible, assuring you of our hearty co-operation. Yours very truly,

THE JERPE COMMISSION COMPANY,
By C. A. Swanson, Secretary and Treasurer.

The Men Behind the Skinner Packing Company

Paul F. and Lloyd M. Skinner have built up and operate the Skinner Packing Company. They have also established the Skinner Manufacturing Company, the world's largest manufacturers and distributors of macaroni products; and the Skinner Baking Company, one of the most modern wholesale bakeries in this territory. These companies have combined assets of over \$7,000,000 and the securities of these companies are all on a staple basis and have never passed a dividend.

No Investor Has Ever Lost a Dollar, Neither Interest Nor Principal, Through An Investment Made In These Companies.

Paul F. and Lloyd M. Skinner have associated with them the following men who are leaders and successful in their special work:

Charles F. Kamrath, Vice-President and Manager, Skinner Packing Company.

J. D. Kennedy, Vice-President and Manager, Skinner Manufacturing Company.

A. Louis, Secretary and Manager, Skinner Baking Company.

Jules H. Rosenbaum, Manager Produce Department, Skinner Packing Company.

D. C. Robertson, Treasurer, Skinner Packing Company, formerly prominent Wisconsin Banker.

C. W. Francis, Manager Financial Department, Skinner Packing Company.

Robert Gilmore, Secretary, Skinner Packing Company, also Secretary of the Skinner Manufacturing Company.

Skinner Name Well and Favorably Known Over United States.

We will have the most modern and efficient packing plant in the United States and the most modern branch house property, all owned by the Skinner Packing Company and the SKINNER name is well and favorably known to millions of housewives throughout the United States in connection with high quality food products as well as being known to every retailer and wholesale grocer in the United States and therefore the Skinner Packing Company is in a more favorable condition to merchandise its products than any packing plant that has ever started in business. We will do a general packing business in beef, pork and mutton and by-products and also will manufacture a line of specialty food products such as is shown herewith. Outside of our fresh meat business, all of these products will be sold strictly through wholesale grocers and we have received hundreds of letters from wholesale grocers throughout the United States favorable to our products and have received blanket orders through the salesmen of the Skinner Manufacturing Company for over sixty carloads of these products and as yet we have issued no price list nor made any attempt to sell the goods. The orders were given in connection with our men calling on the wholesale grocers and selling macaroni products. Here is an extract from two letters of the many we have received from wholesale grocers:

Morganton, N. C., April 28, 1919.

Skinner Packing Company, Omaha, Neb.

Gentlemen: I am in receipt of your favor of the 24th and have carefully noted what you say in regard to the Meat Packing proposition. I am favorably impressed with the proposition. My opinion is that the day is not far distant when all the wholesale grocers will buy their supplies from independent packers that are not in the grocery business. As to our part we have already quit buying from the Big Five, even the specials that we used to buy from them in the way of cheese, and canned goods; we have cut this out and buy from strictly Meat Packers only. I feel sure that the other grocery houses in this section will eventually follow the same policy that we are following.

We would like 50 or 100 shares of your stock.

Thanking you for your letter, I am, Very truly yours,

MORGANTON GROCERY COMPANY,
C. A. Spencer, Owner.

Newport News, Va., May 8, 1919.

Skinner Packing Company, Omaha, U. S. A.

Gentlemen: Kindly advise if you are ready to ship cars of provisions to this city.

We have a storage plant well equipped and are handling from one to two cars of provisions each week. Any information you can give will be appreciated. Yours truly,

WILKINS & ROBINSON COMPANY, Inc.,
By J. E. Wilkins.

Can Sell Entire Output.

The following extract from Robinson, Batty & Co.'s letter, Liverpool, England, was written after Mr. Batty had visited Omaha personally and inspected our plant. This firm was manager of Armour & Co.'s business at their Liverpool address from the year 1906 to 1913 and did millions of dollars worth of business in the packing line and the firm is high-grade:

Liverpool, England, 19 Temple Street, March 27, 1919.

Skinner Packing Company, Omaha, Neb.

Gentlemen: After talking with your President, Mr. Lloyd M. Skinner and your Manager, Mr. Chas. F. Kamrath, and after going over your building, I am convinced that you are going to have a real modern plant and that you will turn out a high quality product such as is demanded by our trade. If you will take the trouble to look our firm up you will find that we are well established and reliable. We are in a position to sell the entire output of your plant on English cuts. The writer will be glad to return to the States this coming fall and co-operate with you in the opening up of your plant. Yours truly,

ROBINSON, BATTY & CO.,
By W. Batty.

19 Temple St.,
Liverpool, April 5, 1919.

Skinner Packing Company, Omaha, U. S. A.

Gentlemen:

We were very pleased and interested to hear that Mr. Batty paid a visit to you at Omaha. He has knowledge and a great deal of experience in the Packing line.

As per the arrangement with Mr. Batty, we shall be pleased to put at your disposal our services and distributing machinery for the disposal of all the products you wish to sell on this side of the Atlantic.

Assuring you of our wish to assist you in every way in the development of your interests on this side,

Yours truly,
ROBINSON, BATTY & CO.,
Per E. Robinson.

