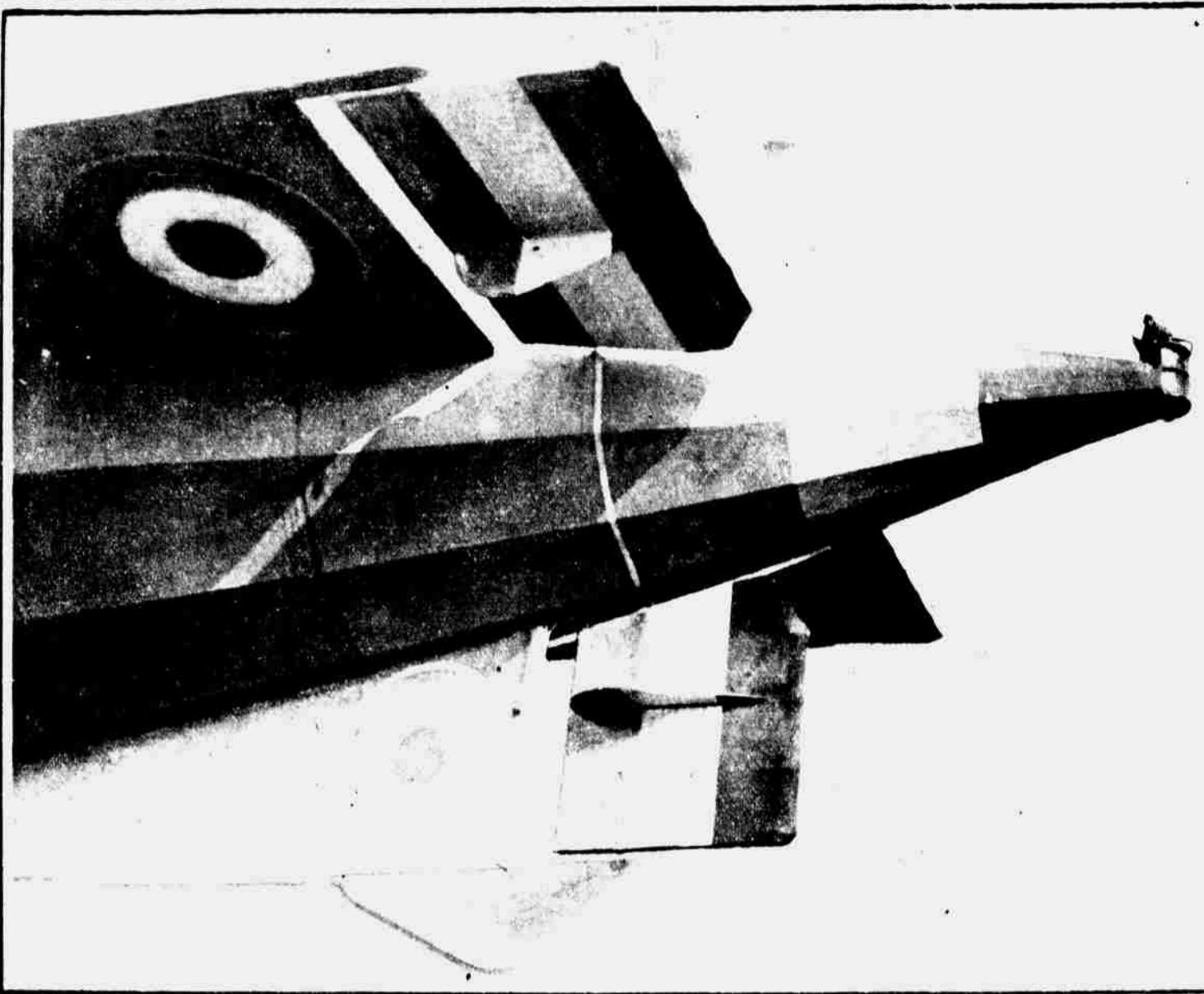


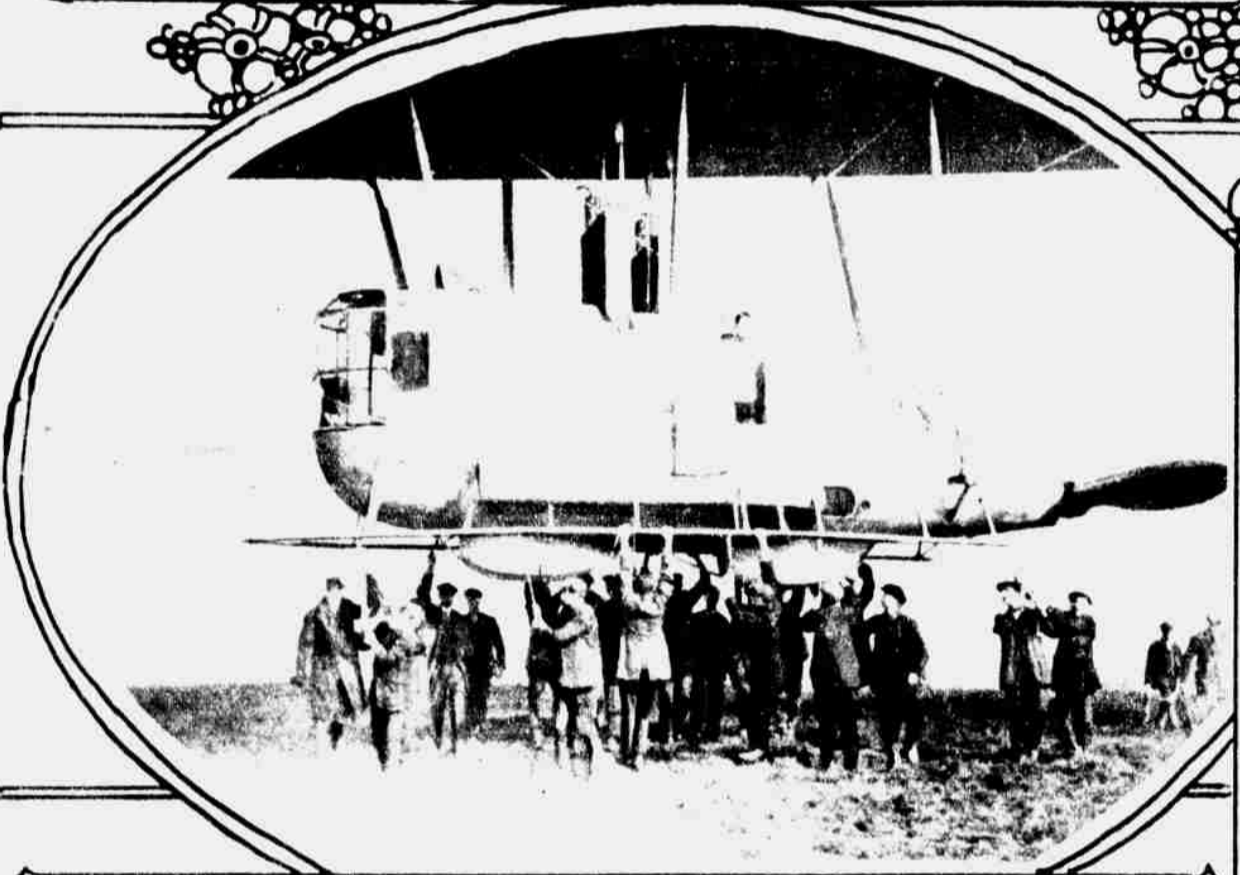
BE PATIENT! BREAKFAST IN LONDON AND DINNER IN NEW YORK THE SAME DAY, DOESN'T SOUND AS IMPOSSIBLE TODAY AS IT MIGHT HAVE A HUNDRED YEARS AGO. THIS GIANT OF THE AIR IS THE "R-33"



THE "R-33" THE LATEST TYPE OF BRITISH AIRSHIP HAS BEEN LAUNCHED AT BARLOW HAK NEAR SELBY, ENGLAND. IT IS EQUAL IN SIZE TO THE MOST SUCCESSFUL ZEPPELIN AND TESTS HAVE SHOWN THAT IT EQUALS, IF NOT EXCEEDS, ZEPPELIN PERFORMANCES. THE DETAILS OF THE SHIP ARE: LENGTH 670 FT.; CAPACITY 2,000,000 CUBIC FEET; FUEL FOR EIGHT DAYS' CONTINUOUS RUNNING SPEED AT LEAST 70 MILES PER HOUR. HER WEIGHT IN FLYING TRIM IS 60 TONS, INCLUDING A CARRYING CAPACITY OF BETWEEN 27 AND 30 TONS. SHE IS CONSIDERED BY HER BUILDERS CAPABLE OF A NON-STOP JOURNEY ACROSS THE ATLANTIC AND BACK. FOR WAR PURPOSES SHE WAS TO HAVE CARRIED FOUR 580-POUND AND EIGHT 250-POUND BOMBS, ALSO MACHINE GUNS FORE, AFT AND ON TOP.



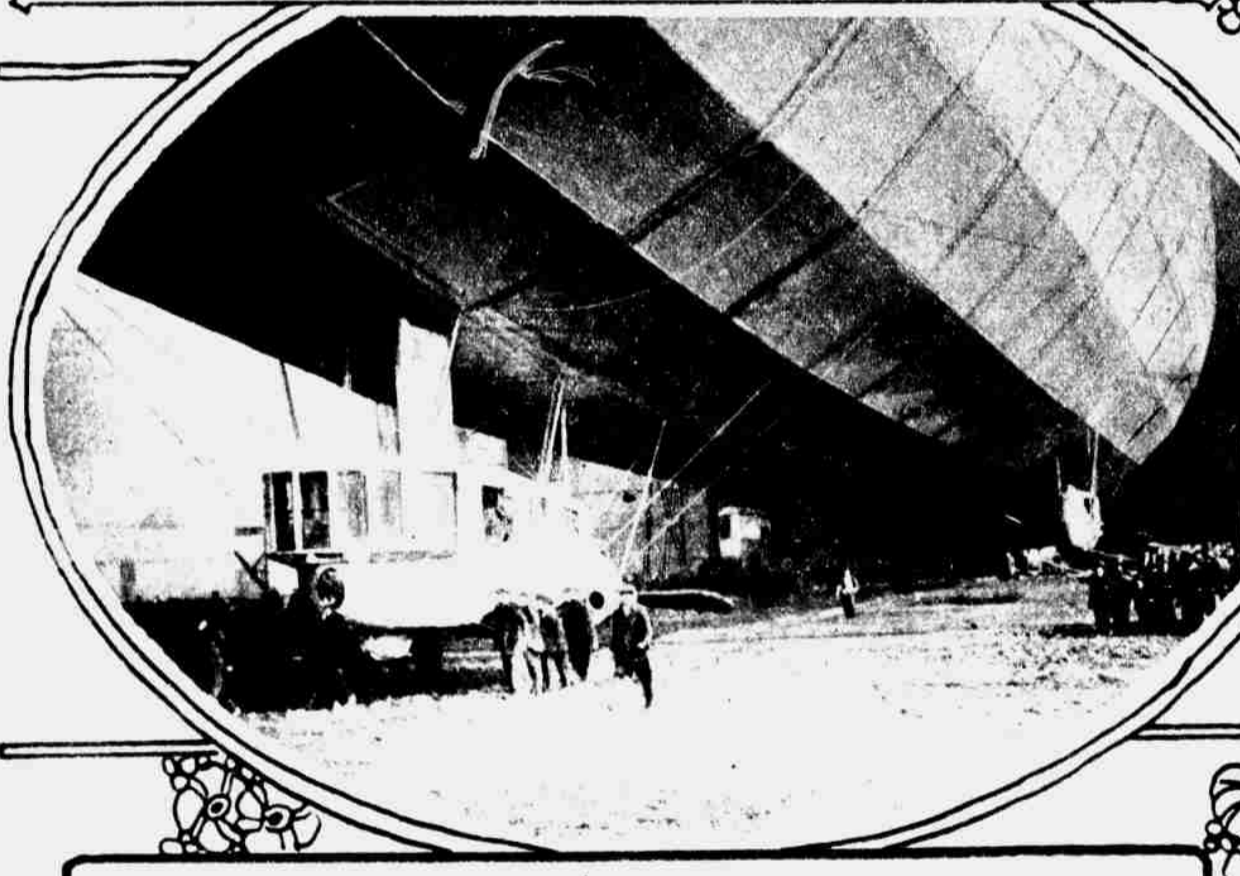
OBSERVER IN TAIL OF AIRSHIP, NOTE OPEN PIT IN TAIL



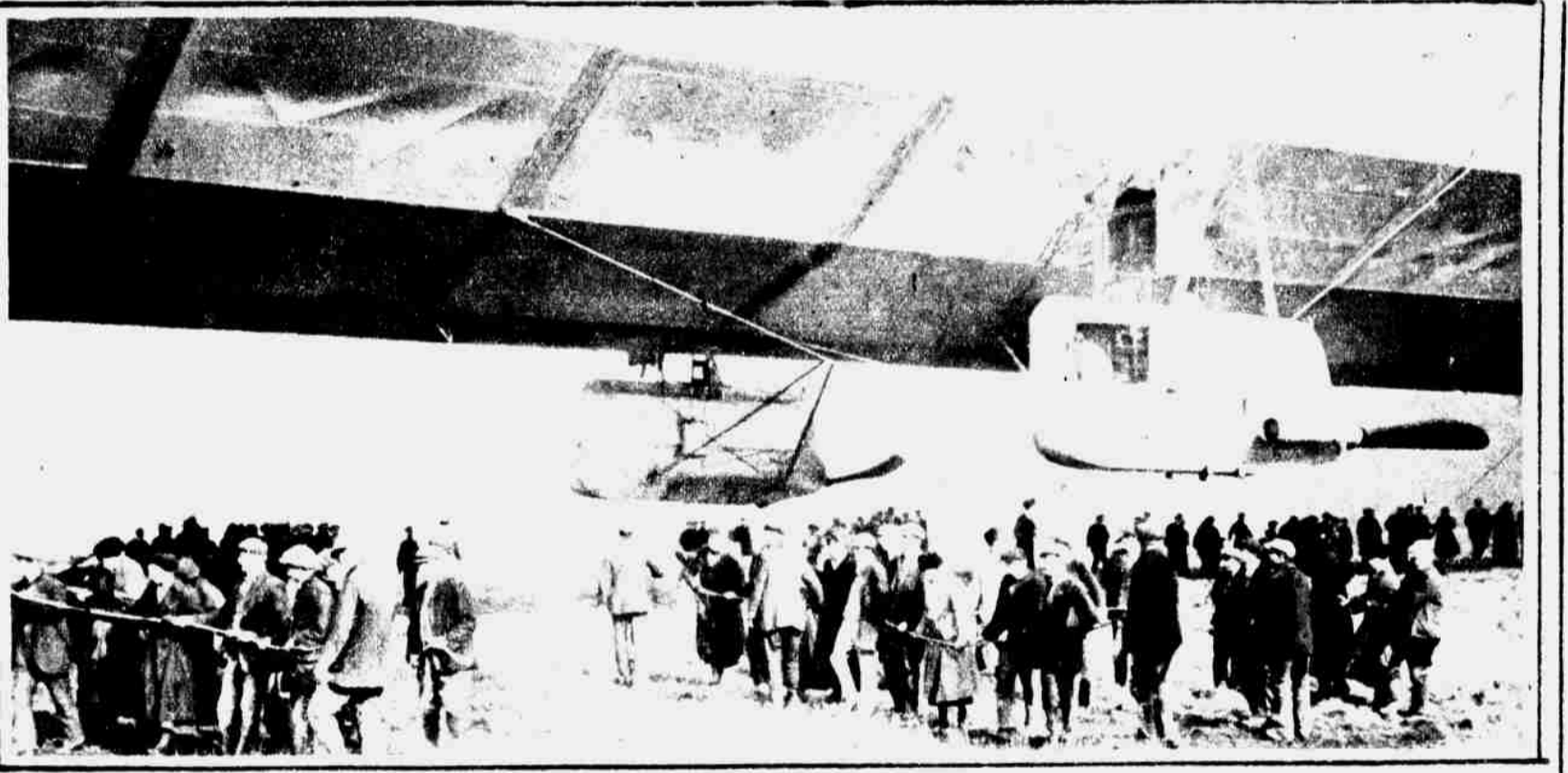
FRONT CABIN, SHOWING WIRELESS OFFICERS



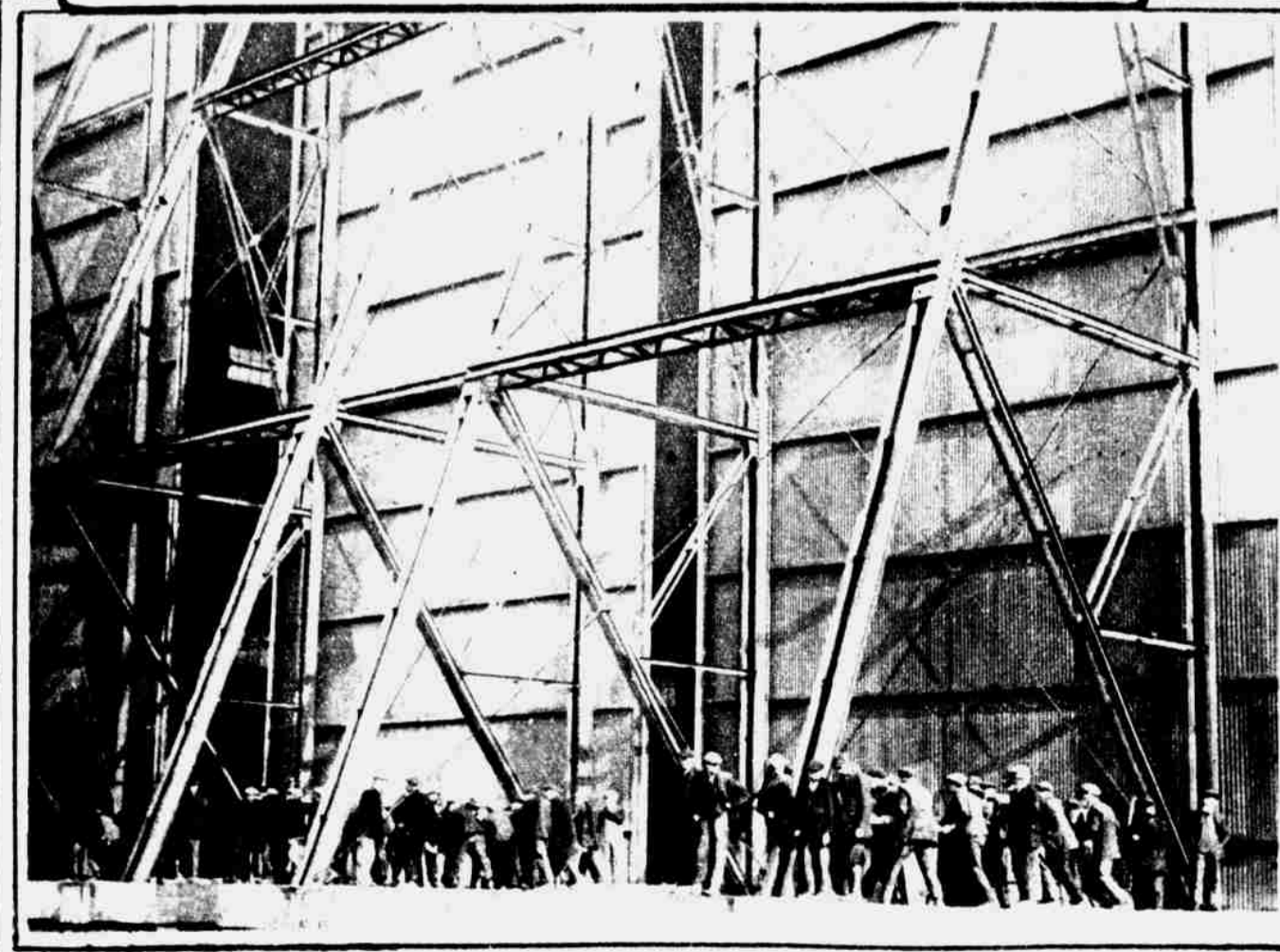
GONDOLA, SHOWING ITS HUGE SIZE AND MEMBERS OF ITS CREW



THE FRONT CABIN, FROM WHICH THE AIRSHIP IS NAVIGATED



TWO CENTRAL GONDOLAS



OPENING THE HUGE DOORS OF THE HANGAR



HAULING THE AIRSHIP OUT OF THE HANGAR