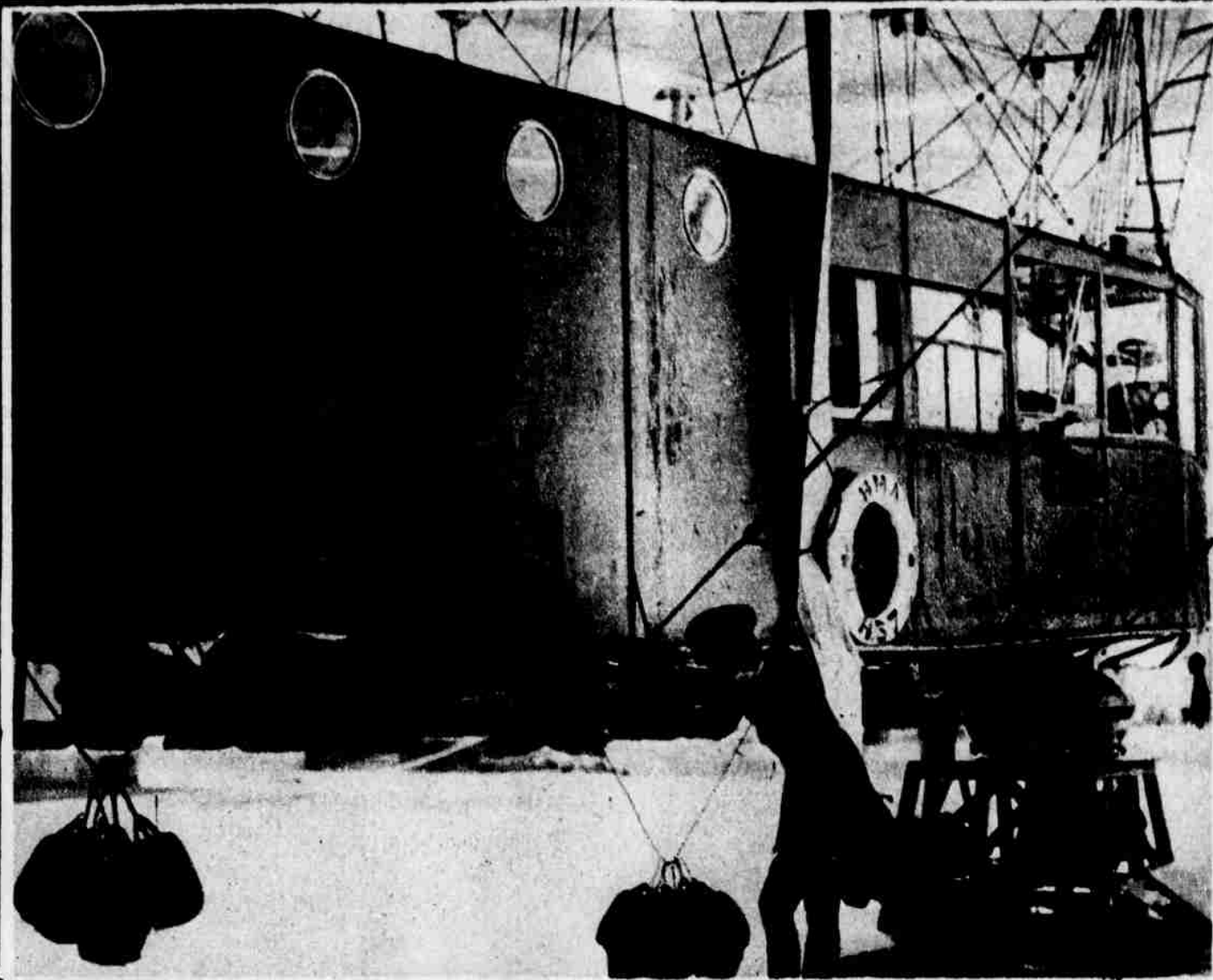
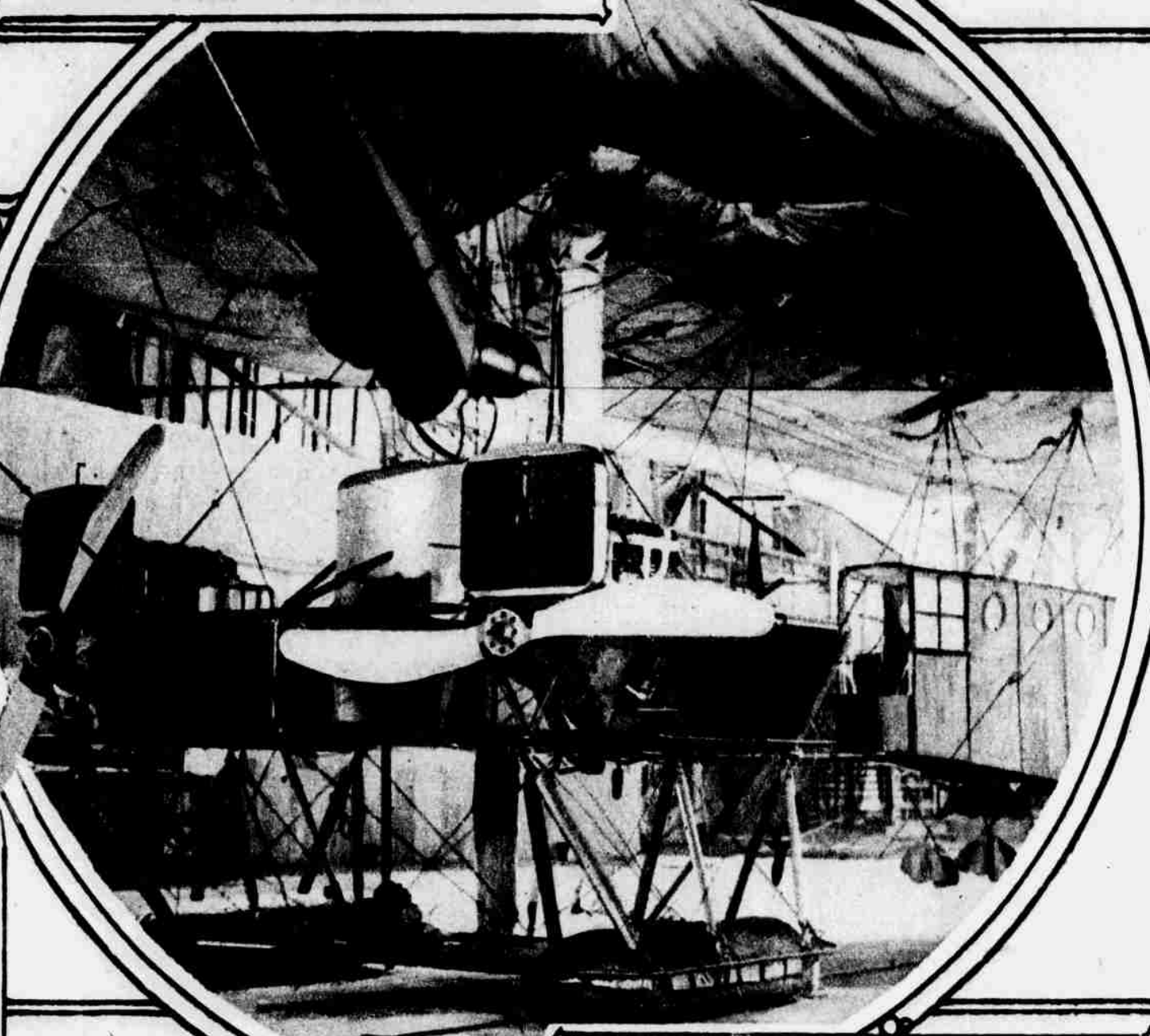


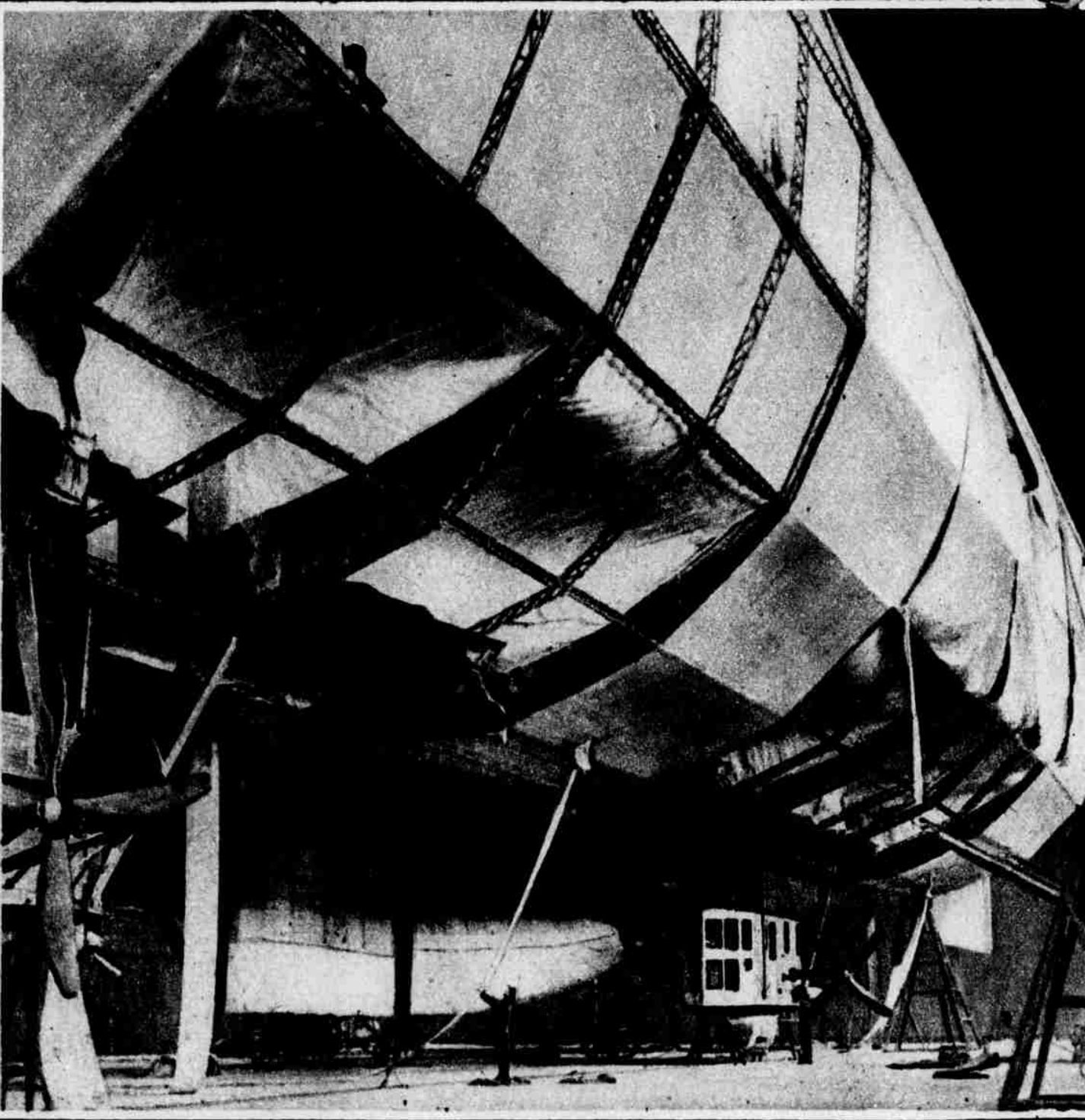
A NEW RELEASE FROM THE CENSOR: BRITAIN'S GREAT NAVAL AIRSHIPS. A GENERAL VIEW OF ONE OF THE GREAT NAVAL AIRSHIP SHEDS OF ENGLAND, WHICH IS SEEN HOUSING TWO AIRSHIPS, ONE OF THOSE BEING OF THE LARGE COASTAL TYPE.



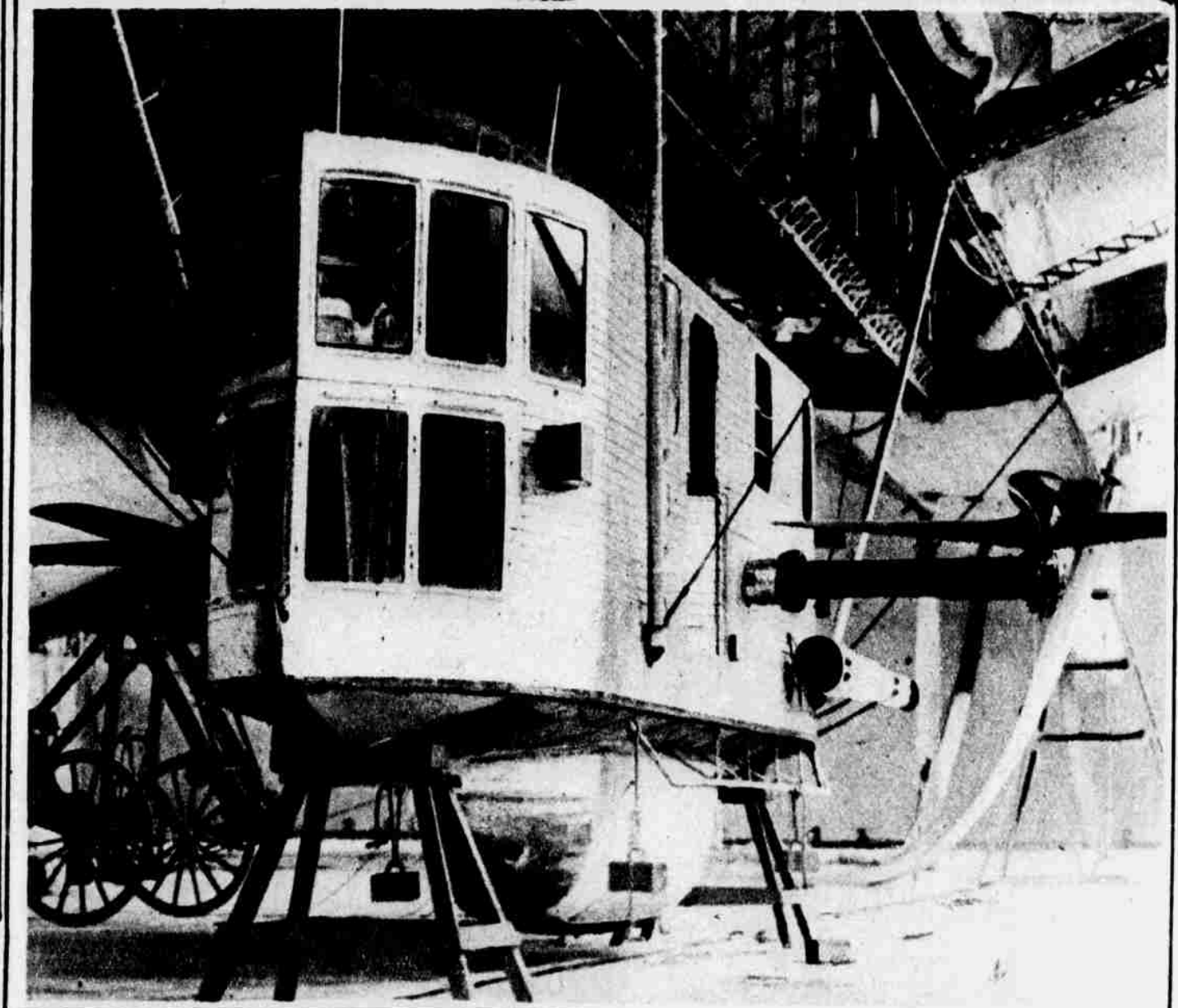
THIS PHOTOGRAPH, PUBLICATION OF WHICH IS NOW PERMITTED, SHOWS THE CONSTRUCTION OF ONE OF THE MONSTER BRITISH AIRSHIPS, EQUAL IN SIZE AND CAPACITY TO THE BIGGEST ZEPPELIN, AND IS A SIMILAR RIGID TYPE. HERE WE SEE SOME OF THE HUGE PETROL RESERVOIRS CARRIED IN A BRITISH RIGID AIRSHIP.



THE MAIN CABIN AND ENGINE OF C-7, ONE OF ENGLAND'S LARGE COASTAL AIRSHIPS.



THIS PHOTOGRAPH, PUBLICATION OF WHICH IS NOW PERMITTED, GIVES AN EXCELLENT IDEA OF THE CONSTRUCTION AND SHOWS THE SEPARATE GASBAGS (OR BALLOONETTES) WHICH ARE, HOWEVER, COVERED OVER WHEN FLYING.



IN THIS PHOTOGRAPH, PUBLICATION OF WHICH IS NOW PERMITTED, IS SHOWN THE AFT ENGINE HOUSE SHOWING THE REVERSIBLE PROPELLER SYSTEM FOR LIFTING.

MOTHER SHIPTON AND JULES VERNE
WOULD SAY THAT FICTION AND FACT
WERE STRANGELY ALLIED IF THEY WERE
HERE TO STUDY THIS PAGE

(Photographs Copyrighted by Central Photo News Service)