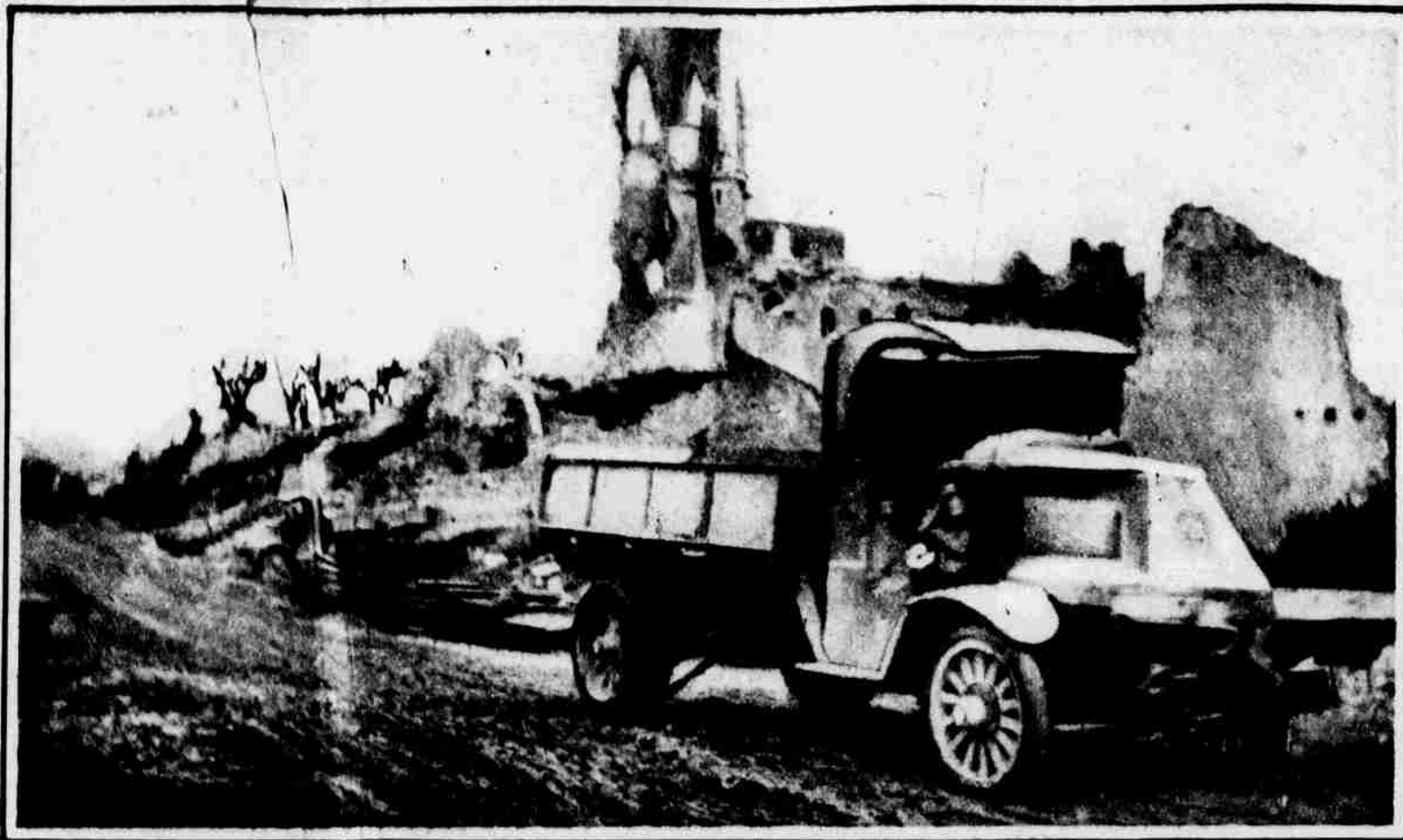


the Western Front Taken by a Washington Post Correspondent



TYPICAL GERMAN DEVASTATION, ST. MIHEL SECTOR.

(All Copyright 1919 by the Washington Post)



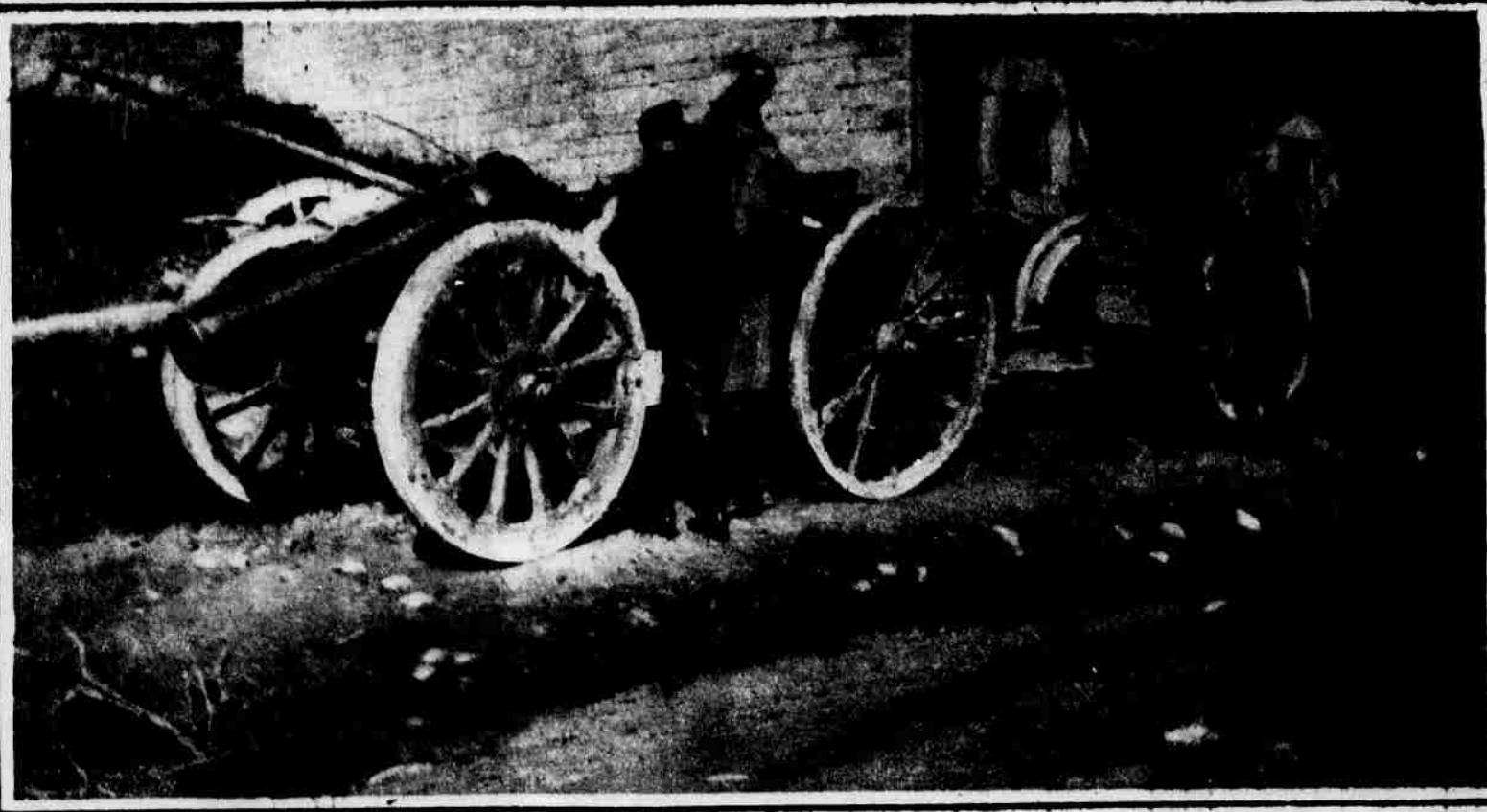
RUINS OF THE RESIDENTIAL SECTION OF CHATEAU-THIERRY AFTER THE CAPTURE BY AMERICANS.



DEVASTATED FRENCH TOWNS, ST. MIHEL SECTOR, DESTROYED BY THE HUNS.



FIRST DIVISION ON THE RECORD BREAKING MARCH FROM LORRAINE TO THE ARGONNE, RESTING BY DAY AT TROYON.



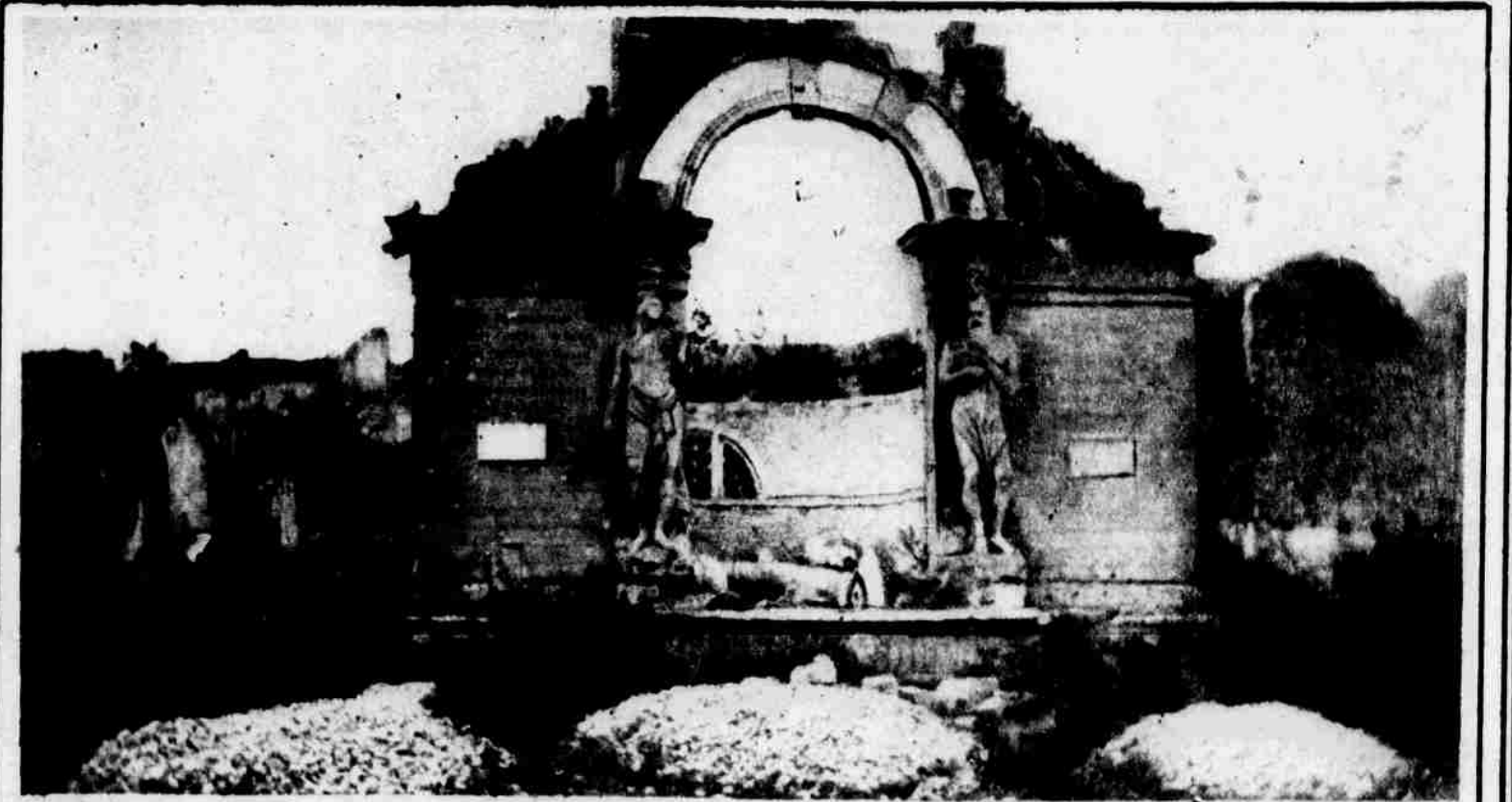
GERMAN ARTILLERY AT TROYON, CAPTURED BY THE 26TH DIVISION



RUINS OF ONE OF THE MAIN THOROUGHFARES OF CHATEAU-THIERRY.



GERMAN FRONT LINE TRENCH SOUTH OF SOISSONS, PHOTOGRAPHED AFTER THE GERMAN RETREAT FROM THE AMERICANS.



ROMAN BATHS, LACROIX-SUR-MEUSE, DESTROYED BY THE GERMANS.