

SHERIDAN COUNTY, Home of Alfalfa NEB.

"Best County" in the "Best of the World," is the way the people of their town and community. There is something in the air of Sheridan county which makes it a place of agricultural dependence. The people live ones to the vicinity of the city. The old-timers on their tip toes every day and part of the night. In other Nebraska places the buildings are newer and the streets are newer and the appearance of the place, with a business place, with a business place. The streets are a little thicker, and the sidewalks are a little bricker than in any town. As it is, in the best county in the west, the benefit of the soil is near there in the past. The land into real production. The year sees more and more of the day is rapidly approaching. The west portion of Sheridan county is the finest balance being the finest. The land is being used by sunshine and rain. The offhand way that he extends this year, it means that this section. In fact, Hay Springs from the 1918 crop.

and poker player in that it has and it is the direct connection surrounding community, such a shipping center.

Shipping business is merely a part of the surrounding country. From a cattle to an all-around wheat, oats, rye, barley, and corn, regarded as sure crops, potatoes and alfalfa in capital planted on every farm each year is one of the biggest in the west.

on her job, may be gathered from the store shipped \$1,500 this year.

west is there a section which a farmer that wants to build here his chosen lifework will reward.

\$25 up, on being broken and produce the same return as the expense invested on \$300 acre land. Hay Springs are being passed on to the next generation, who expect to see their farms into \$300 acre land, and the land further east. From a little, if any difference, and a man a chance to acquire for the high-priced district. It is a man and womanhood that is answering the call for cheap land to the owner with its development. Americanism comes better everything that goes to make a man live, and incidentally a man large returns from his investment.

of life, who wishes to build a home in Sheridan County, Nebraska, of which it is all that this land is a real working man.

Corn—Alfalfa—Hogs

The Producer's Greatest Combination

After farming in the best portion of Iowa for 30 years, I want to say to all farmers, that Sheridan County presents the producer's greatest combination---Corn, Alfalfa, Hogs---on land that costs you only \$25 to \$50 per acre.

I Know I sold my \$250 Iowa land after trying Sheridan County two years on the same Hogs-Corn-Alfalfa combination.

WRITE ME ABOUT IT
A. F. Mammen,

Hay Springs, Sheridan County, Nebraska

President, C. F. COFFEE Cashier, I. A. GOFF
Vice Pres., IRA B. RICHMOND

First National Bank

Capital \$25,000 Surplus \$25,000

HAY SPRINGS, NEBRASKA
Sheridan County

Deposits Jan. 1st 1909 \$102,758.30

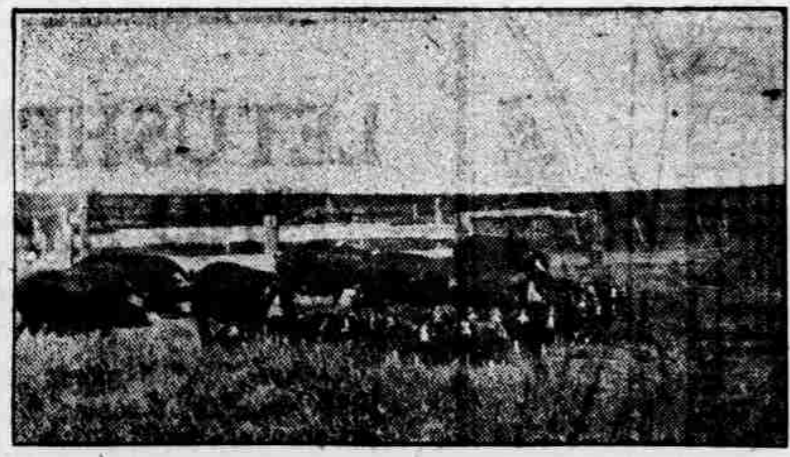
Surplus Jan. 1st 1909 2,000.00

Deposits Jan. 1st 1919 \$386,268.49

Surplus Jan. 1st 1919 25,000.00

A Good Bank in a Good County

Sheridan County topped the South Omaha hog market 11 consecutive days in November



Sheridan County Hogs Are Immune from Cholera.

SHERIDAN COUNTY, NEBRASKA

Has a class of people not equaled anywhere in the United States. They are possessed with true western spirit of "live and let live." Everybody helps his neighbor.

SHERIDAN COUNTY, NEBRASKA

A Sheridan County farmer complained that he had only a half crop of potatoes last year. His potatoes went 300 bushels to the acre in 1916. Farmers don't have to fight potato bugs in this county.

SHERIDAN COUNTY, NEBRASKA

Potatoes yield from 120 to 200 bushels per acre—sell from 90c to \$1.40 per bushel.

SHERIDAN COUNTY, NEBRASKA

Our best paying crops are Alfalfa, Corn and Hogs. Never a known case of cholera in Sheridan county. We put our hogs on the railroad at a cost of less than 2 cents per lb. Many of us ship from 1 to 10 cars each year.



The Pride of a Sheridan County Land Owner.

Horses	27
Wheat	47
Eye	4
Hay	33
Hay Seed	3
Wheat	3
On	2
Twice this amount on hand on account of car shortage.	
Average Production Per Acre. 1918	
Corn	25
Oats	32
Winter Wheat	18
Spring Wheat	18
Eye	16
Barley	30
Alfalfa	185
Wild Hay	185
Potatoes	185
The figures for the year 1918 as shown are the figures of the County Agricultural Agent.	

COMMERCIAL HOTEL
Hay Springs, Nebraska

W. R. BOWMAN REAL ESTATE AND INSURANCE

I have listed for sale some of the best farms and ranches in western Nebraska. Buy now, before the raise in price.

The price of western land is steadily increasing. Invest your money in western Nebraska land—and do it quick.

I offer you your choice out of 10,000 acres. These lands are offered you at \$25.00 to \$75.00 per acre, according to the improvements and distance from town.

They will yield as much or more per acre in farm products, than any \$300.00-per-acre land. Moreover, the land will double in value in a year or two.

No business pays like farming today, as you well know. Mixed farming pays the best. Think of butter fat at 60 cents per pound, and other products in proportion.

Get a ticket and come and see the big crops we are growing. It will pay you. Let us know in advance when you are coming, so we can meet you with our auto and show you the country without cost.

But let us tell you more about the country; our free literature will interest you, and will gladly mail you this if you will ask us.

I have been in business in Hay Springs, Nebraska for 25 years and will refer you to any bank or business firm in town as to my responsibility and square dealing.

W. R. BOWMAN
Hay Springs, Sheridan County, Nebraska

Sheridan County

---The County With Opportunities and a Future---

It's not far to Sheridan County. It's not far to go. It's not far to Sheridan County. But it's the best old place I know. Spuds grow as big as pumpkins. Corn crop, Oh, my. The pigs, they think that they are in Heaven. IN ALFALFA waist high.

Sheridan County, located in the northwestern part of the state, is devoted entirely to the raising of stock and farming, the C. and N. W. R. R. passing through the northern part of the county and the C., B. & Q. R. R. passing through the southern part.

Sheridan county has 960,738 acres in farms; of these acres 124,045 acres are cultivated, 137,016 acres of improved land with improvements valued at \$158,047, unimproved land 1,270,664 acres.

Many acres of this unimproved land is land that is owned by ranchers or men who do not care to farm it. This land is of the very best farm land in this county and is offered to the man that wants to make a home for himself. This land can be purchased in tracts to suit the purchaser, giving him as much as he wants, for farming and pasture. It all lays level to gently rolling, with very good graded roads to town.

We are giving you a few of the facts about Sheridan county that will be worthy of due consideration on your part in making a choice for a home. Eighty-seven per cent of our farms are occupied by the owners; a new \$40,000 court house, paid for; \$125,000 treasury surplus drawing interest; our taxes are the lowest of any county in Nebraska.

We have the best roads—no sand, and more automobiles per capita than any county in Nebraska. We have more money on deposit in Sheridan county banks for every man, woman and child than any other county in Nebraska.

Only 13 per cent of our best Agriculture land is under cultivation; that is why we want you to come and see us and live with us.

Sheridan county has the best schools; Hay Springs has Normal Training high schools.

Our best paying crops are Alfalfa, Corn, and Hogs; hog cholera is practically unknown in this county. We put our hogs on the railroad at a cost of less than 2 cents per lb. Many of us ship from 1 to 10 cars every year. Potatoes are a very good crop here; we are the second county in the state in spud production. The figures appearing are compiled from the report of the Nebraska State Board of Agriculture and the Sheridan County Farm Demonstrator's records. They will stand the strongest investigation; remember that we do not claim to produce the most per acre of any county, but we do claim to produce the most per acre in proportion to the price of land. Think it over.

Friday and Saturday were perhaps the two busiest potato days of the season. On Friday all cars on track were filled and only the Nebraska Potato company's warehouse would hold more. At this place the unloading continued into the night, and still a dozen or more loads were left over for Saturday morning. During the night, however, more cars arrived and the loading of wagons began early Saturday morning. Monday, Tuesday and Wednesday were equally busy days and there were from 20 to 30 loads waiting all day for their turn to unload. Today there has been shipped from Hay Springs 130 cars of potatoes and the end is not near in sight. Buyers are paying from \$1.40 to \$1.50 per hundred.

Hay Springs News, October 10, 1918.

Sheridan County is the Home of One-Fourth of All the Potato Flour Mills in the United States.