

PRINT V. LOAN BULLETINS TO REACH 60,000

Pamphlets Explaining Coming Loan Issues to Be Distributed in Industrial Plants and Offices.

The advertising committee of the Victory loan campaign has appointed Earl Allen, chairman of a special committee, to prepare and distribute a special bulletin service on the Victory loan for use in industrial plants and business houses.

Seventeen different bulletins explaining the coming loan will be mailed to the heads of each institution for posting on the bulletin boards.

To Reach 60,000 People. It is estimated that 60,000 people will read the message which these bulletins will carry.

The copy will be similar to the copy which is now being inserted in the advertising column of the Omaha daily papers.

T. L. Davis, division chairman of District 3 of the Victory loan campaign, has charge of Divisions 30 to 37. The following is his organization as it now stands with some additions to come:

District 30—Fourteenth to Sixteenth, Farnam to Howard. Major, H. B. Whitehouse; captains, Ralph Russell, Bert Fowler, Ed Merritt, O. B. Williams; lieutenants, Frank Drexel, J. L. Hess, G. W. Schultz, Dr. G. D. Shipperd, Paul Burleigh, Dr. F. J. Wearne, Dr. C. T. Barber, Dr. A. F. Tyler, A. H. Ellis, A. B. Currie, F. S. Martin, Jack Webster, Samuel Glick, W. G. Spain, Ray Wagner, Sam W. Reynolds, C. T. Platt, Harry Ryan, Charles Martin, Al Dresler, S. W. Napier, Al Berdun, A. W. Elmer, Tom Keenen, G. Hartman, J. B. Greene, Guy McKenzie, R. E. Harris, Eugenie Duval, D. R. Mullin, A. B. Carpenter, A. E. Parmelee.

District 31—Thirteenth to Fourteenth, Farnam to Howard. Major, George W. Platter; captain, T. F. Kennedy; lieutenants, George E. Mickel, J. A. Medlar, T. L. Combs, F. B. Aldous, Dan Johnson, A. M. Smith, Edward Creighton, Ralph Peters, F. C. Patton, Frank Pond, C. C. Wharton, H. T. Black, Frank McCaffrey, Bert Murphy, John Madin, Guy Furray, Charles Garvey, Will McCaffrey.

For District 32, District 32—Thirteenth to Sixteenth, Howard to Pacific. Major, W. B. Clift; captain, T. F. Kennedy; lieutenants, Clyde E. Knott, J. C. Allgaier, Mr. Bushnell, H. T. Cutler, Fred M. Hall, W. B. Hopson, E. S. Weatherly.

District 33—Tenth to Thirteenth, Howard to Pacific. Major, Roy T. Byrne; captain, A. B. Warren; lieutenants, H. H. Dahman, Harry Weller, George W. Sumner, George Laier, E. G. Ward, W. J. Monaghan, Quentin Moore, W. W. Bingham, Frank Hughes, Eugene Atkins, T. H. McDearmont.

District 34—Tenth to Thirteenth, Farnam to Howard. Major, F. S. Keogh; captain, T. B. Coleman. **District 35—**Tenth to river, Howard to Pacific. Major, F. V. Roy; captain, H. T. McManus; lieutenants, R. C. Hudson, Edward Doran, W. G. Smith, Gene Kohn, G. Seaberg, J. H. Bugge, W. D. Williams, F. W. Kneibler.

District 37—Trench team.

"Unenlightened" Indian Stays in Alaska and Counts Money

Jucan, Alaska, April 4.—The man who believes the Alaska Indians are a poor, downtrodden, unenlightened race has but to glance at the recent reports of the operations of several companies in this territory composed entirely of Indians to change his mind.

The Metlakatla Commercial company, composed of Indians on Annette island, recently declared a dividend of 20 per cent cash on its capital stock, 10 per cent cash dividend on purchases by stockholders and a 15 per cent stock dividend for the 12 months ending December 31, 1918.

The Hydaburg Trading company, composed of Indians on Prince of Wales island, declared an 8 per cent cash dividend on its capital stock, 7 per cent on purchases to stockholders and a 4 per cent stock dividend on its capital stock for the 12 months ending December 31, 1918.

The Metlakatla company last season furnished Indian labor to the Annette Island Packing company. Chinese labor for the fishing canneries heretofore has been furnished by special contractors. This company's books show that it made sales amounting to \$40,000 last year on which a profit of \$9,602.39 was made.

Hobble Skirts Add 17 Seconds to Train Stops

By International News Service. Philadelphia, Pa., April 4.—That tight skirts delay the trains by adding 17 seconds to the average stop is the allegation contained in a complaint filed by the South Jersey Commuters' association with Charles Markham, regional railroad director, whose main offices are in this city.

The protest explains that this extra time concession is necessary to the female sex because the steps of the old Pullman cars used on the Trenton Division of the Pennsylvania railroad are of a height from the station platform that makes imperative a tortoise-like movement on the part of the hobbled woman passengers entering and leaving the trains.

According to hearsay of the Jersey commuters the brakemen are taking considerable interest in their work nowadays because of the fact that women must literally be lifted to the platform in alighting.

BURGESS-NASH COMPANY
"EVERYBODY'S STORE"

Friday, April 4, 1919. STORE NEWS FOR SATURDAY. Phone Douglas 2100

Rose Bush Sale
Saturday Morning 9 to 10 **5c**
No C. O. D., no phone orders and no deliveries

Here's an Unusual Value in Georgette Blouses Saturday at \$5.00

IT'S been a long time since we offered such exceptional values as these are at \$5.00. The material is of a superior quality.

Made in slip-on, round neck, square neck and frill effects.

Some are beaded, others embroidery and lace trimmed. Flesh, White, Sunset Tan and light Blue shades.

Burgess-Nash Co.—Second Floor

You'll Want Several Pair of These Women's Silk Hose at \$1.00 PAIR

The offering includes—
—Women's black or white pure thread silk boot hose, full fashioned.
—Women's black or white silk and fiber hose, seamless.
—Women's pure silk hose in white, brown, champagne and navy, seamless.

Burgess-Nash Co.—Main Floor

These New Spring Pumps Specially Priced for Saturday \$6.95

THE reduction is made as a special inducement for "Dress-Up Week." Two new dressy pump models for street wear.

—A fine dark brown Russia calkskin pump with light welt soles. Perforated shield tip, 1 3/4-inch leather Cuban heels, short tongue colonial.

—Black kid pump, low colonial pattern, plain toe, light welt soles, 1 3/4-inch leather Cuban heels.

These are two of the newest street pumps and the value is very unusual for Saturday only.

Burgess-Nash Co.—Second Floor

Clever Billy Burke Style Pajamas Featured Saturday At \$1.95

THERE are several different styles made up in windsor crepe and batiste, manishly tailored or femininely trimmed with lace and ribbons. The illustration gives you some idea of the style. The price is very special, at \$1.95.

Women's Bloomers of Seco Silk at \$1.19

Prettily flowered and dotted designs with shirred knee ruffles. The material is very durable and the value is unusually large.

Burgess-Nash Co.—Second Floor

A Big Distributor's Surplus Stock of Coaster Wagons at Radical Reductions

BOYS, here's your chance to secure a "dandy" coaster wagon. Well built and substantial at a very small cost. Three kinds featured Saturday.



Fly Away Coaster
\$3.50

Like illustration. Built for service, nicely painted green and trimmed with red, steel axles, bronze bearings, rubber tires.



Yankee Flyer Coaster
\$5.25

Like illustration. 40 inches long, 16 inches wide, large steel wheels, rubber tires, bronze bearings, well finished.



Yankee Coaster
\$5.85

Like illustration. 36-inch body, 16 inches wide, corrugated pressed steel axles, 8 1/2-inch wheels, rubber tires, adjustable handle, \$5.85.

Burgess-Nash Co.—Fourth Floor

Plant Gladiolus Bulbs Now 29c Dozen

Hard bulbs, assorted colors, for home planting, will bloom this season, 29c dozen.

Cut Roses, 5c

Fresh cut home grown roses, in assorted colors, special Saturday, 5c each.

Asparagus Ferns, 19c

In 3-inch pots, at 19c each. 4-inch pots, at 29c.

Burgess-Nash Co.—Main Floor

WOMEN'S Union Suits at 59c

Comfy cut style, low neck and sleeveless, cuff knee, good quality white cotton, sizes 34, 36 and 38.

Women's Vests, 50c

Low neck and sleeveless, bodice tops, also shoulder straps, fine quality white cotton.

Burgess-Nash Co.—Main Floor

A New Shipment of French Kid Gloves

in the most desirable shades, have just been received. Brown, gray, navy, tan, beaver, mastic, beige, pearl, butter shades, with plain or contrasting embroidery. These are of exceptional quality fine kidskin, \$3.00 to \$4.00 pair.

Silk Gloves, \$1.00 to \$2.00

We have a most complete assortment of double tip silk gloves, in the newest shades, including beige and navy, \$1.00 to \$2.50.

Children's Gloves

Children's kid gloves, \$1.25 to \$2.25 pair.
Children's silk gloves, \$1.00 pair.

Burgess-Nash Co.—Main Floor

Clearaway of BOOKS From Our Circulating Library

Including a big list of the books you should read.

"Light of Western Stars," by Zane Grey.
"Heart of Rachel," by Katherine Norris.
"Mr. Britling Sees It Through," by H. G. Wells.
"Indifference of Juliet," by Richmond.
"Private Peat," by Harold Peat.
"Cecilia of the Pink Rose," by Taylor.
"Penrod and Sam," by Booth Tarkington.

Popular Fiction

"Firing Line," by Chambers.
"Garden Without Walls," by Coningsby Dawson.
"Shorty McCabe on the Job," by Ford.
"Jewel Story Book," by Burnham.
"Andrew the Glad," by Davis.

Children's Books

"Boy Scout Book."
"Alice's Adventures in Wonderland."
"Adventures of a Brownie."
"Gulliver's Travels."
"Tales From Shakespeare."
"Cruise of the Sally D."
"True to His Trust."
"Lost Gold Mine."
"Outdoor Chums."

Burgess-Nash Co.—Third Floor

Most Interesting Is This Display Saturday of The New Modes in Women's Ready-to-Wear for Spring

A DISPLAY gay with Spring colors, embracing suits, coats, skirts and dresses that cleverly portray the latest style touches, combining a certain distinction with moderate pricing that will appeal to the discriminating women of Omaha and vicinity.

Women's Tailleur Suits, \$25.00 and Upward

We can promise you complete satisfaction in our section for suits.

The suits that come into the cases daily are the proud representations of well-known New York designers, closely in touch with Paris developments, with individual skill of a high order and noted for the originality of their models.

New Coats and Dolmans, \$25.00 and Upward

As in the suit fashions, so in these garments, the originators set the seal of their favor upon this particular style, not to the exclusion of all others, but certainly with greater emphasis.

The use of two materials in combination, is often seen. The fabrics favored include serge, tricotine, velour gabardine, Evora, Bolivia, silvertone, satin, etc.

The New Separate Skirts, Price Range, \$8.95 to \$45.00

The blouse and separate skirt have come into their own again—much to the gratification of women who like frequent change of apparel.

Among the more dressy skirts there's a wide range of materials as well as styles—many of them original in design and effective in finish.

The New Dresses, Price Range, \$25.00 Upward

Dresses for every occasion, practical purposes, street and afternoon wear. The materials are plain or in combination, in a variety of models, that you cannot fail to find just the sort of style you have in mind and most desirable.

There is originality and smartness in every one, which you must see to appreciate.

Burgess-Nash Co.—Second Floor



MEN'S New Spring Hats \$3.50 to \$8.50

ALL the new favored shapes, styles and shades are represented here in splendid assortment.

Special attention is directed to the showing of the popular light weight felts so desirable for spring and summer wear.

The new shades are green, brown and gray.

Men's Caps, \$1.50 to \$3.00

New spring style in smart novelty effects, plaids, plain colors and conservative patterns, \$1.50 to \$3.00.

Burgess-Nash Co.—Main Floor

LINCOLN Spark Plugs 39c

Every motorist knows the merits of the Lincoln spark plugs. Saturday, in the Auto Accessory Section, 39c each.

Burgess-Nash Co.—Fourth Floor

There's a Certain Satisfaction About These Burgess-Nash Spring SUITS for MEN \$25.00 to \$60.00

THAT you seldom ever secure in merchant tailored garments. There's everything about them—the material—the fit—the style—the patterns—that mean satisfaction to you and, above all, a Burgess-Nash reception, which means genuine service when you buy and money back cheerfully if you're not pleased.

Made to conform with the **Burgess-Nash Standard** of quality, which means the best possible at the price.

"Ready-for-service" suits for men, in a combination of dependable fabrics, cut to fit and hand-tailored by tailors who are masters in their art.

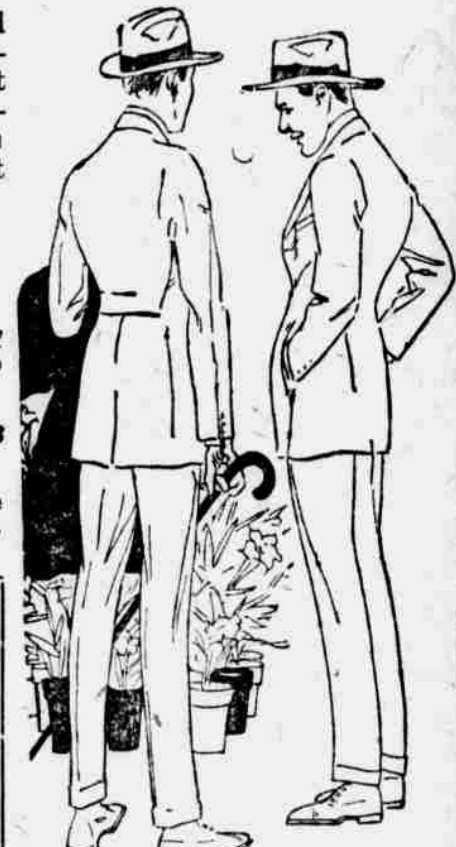
We Feature for Saturday Young Men's Suits for Ages 16 to 20, \$18.75

Featuring the new waist-line models. The materials are chevots and cassimeres, in fancy fawns, browns and stripes. Full lined. Newest style patterns.

Special! Men's New Spring Top Coats \$18.00

Mixed gray with self collar, belted back or belt all around, silk yoke and sleeve lining, taped seams. Exceptional values, \$18.00. Others from \$25.00 to \$40.00.

Burgess-Nash Co.—Main Floor



Boys' Corduroy Suits Featured for Saturday at \$7.95

IN the new Spring models, belt all around, slash pockets, full skirts. The pants are cut roomy, full lined, re-inforced seams; ages 6 to 18 years. Exceptional values, at \$7.95.

Boys' New Spring Suits, \$9.95

Models and weaves, belt all around, plain and slash pockets, two breast pockets with flaps. Pants full lined, fancy stripes, checks and mixed colors. Ages 6 to 18 years, at \$9.95.

Boys' Blouses at \$1.00

The K. & E. quality, the kind that are cut to fit and guaranteed fast colors; serviceable materials used only; plain blue, chambray, candy stripes, fancy pin stripes in all different colors; ages 6 to 16 years, at \$1.00 each.

Burgess-Nash Co.—Fourth Floor



These Are Extreme Values In Men's Fine Silk Shirts at \$6.45

THEY'RE specially priced for Saturday only. Made of fine tub and baby broadcloth silk, in the season's newest and most select patterns. Splendid assortment of bright and attractive colorings, as well as neat hairline stripes. Silks that will give you unusual wear and the utmost satisfaction. All sizes, 14 to 17, and priced for Saturday, at \$6.45.

Other silk shirts of crepe de chine, silk broadcloth, Empire and Jersey silk, \$7.50 to \$12.00.

Men's Madras Shirts, \$1.65

Splendid qualities of woven and printed madras. All fresh, new and clean and of extra quality. Selected patterns of new and attractive designs. All sizes, 14 to 17, at \$1.65.

Men's Hose at 25c

Men's fiber silk and silk lisle hose in all colors of black, white, palm beach and gray. All sizes, 9 1/2 to 11 1/2. Some have slight imperfections, which will not effect the wearing quality. Saturday, pair, 25c.

Burgess-Nash Co.—Main Floor

