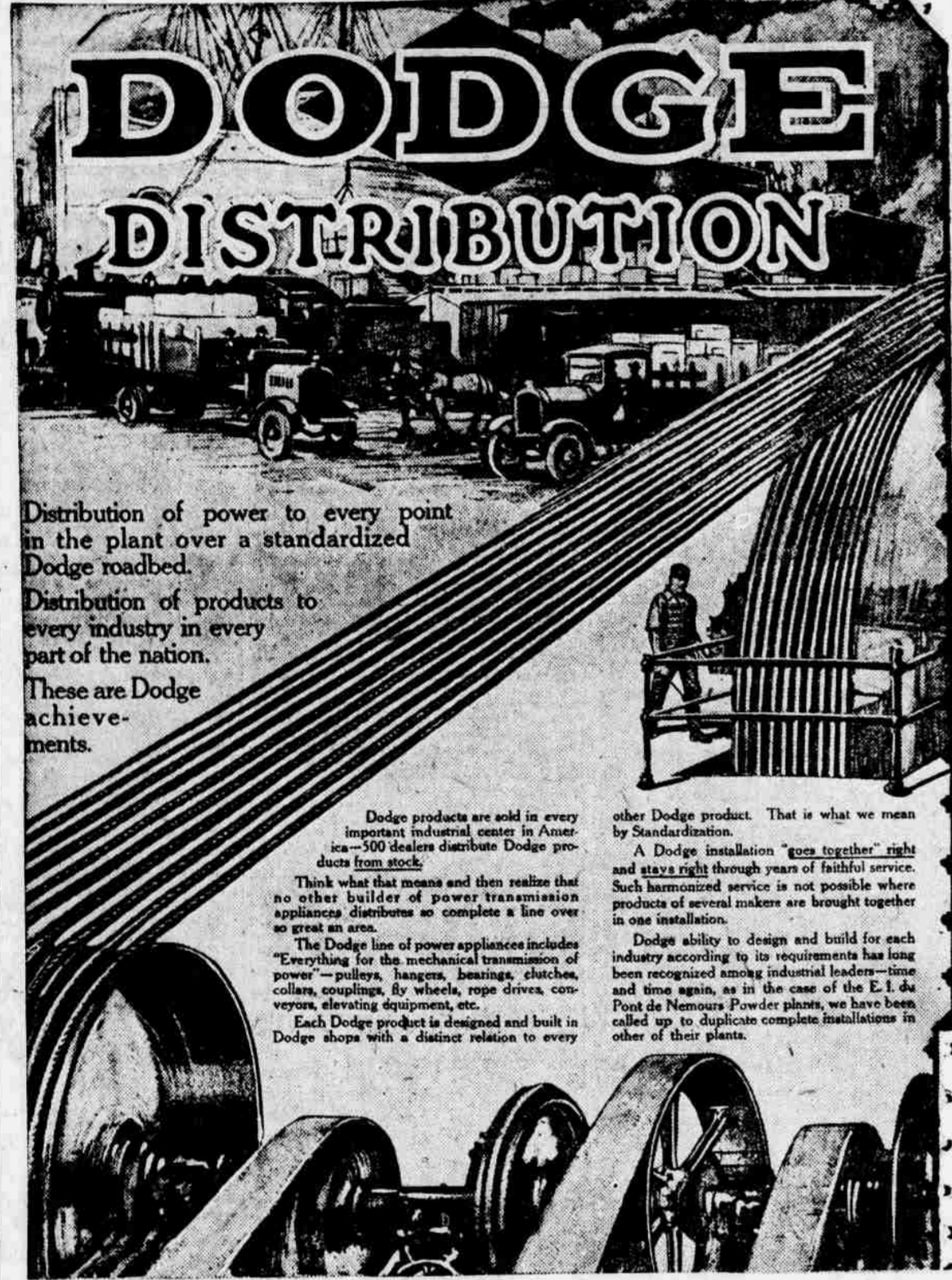


Sunderland Machinery and Supply Company

Western Distributors for

DODGE POWER EQUIPMENT



DODGE DISTRIBUTION

Distribution of power to every point in the plant over a standardized Dodge roadbed.

Distribution of products to every industry in every part of the nation.

These are Dodge achievements.

Dodge products are sold in every important industrial center in America—500 dealers distribute Dodge products from stock.


Think what that means and then realize that no other builder of power transmission appliances distributes so complete a line over so great an area.

The Dodge line of power appliances includes "Everything for the mechanical transmission of power"—pulleys, hangers, bearings, clutches, collars, couplings, fly wheels, rope drives, conveyors, elevating equipment, etc.

Each Dodge product is designed and built in Dodge shops with a distinct relation to every other Dodge product. That is what we mean by Standardization.

A Dodge installation "goes together" right and stays right through years of faithful service. Such harmonized service is not possible where products of several makers are brought together in one installation.

Dodge ability to design and build for each industry according to its requirements has long been recognized among industrial leaders—time and time again, as in the case of the E. I. du Pont de Nemours Powder plant, we have been called up to duplicate complete installations in other of their plants.



If you are building a new plant or are changing over your present equipment from the manufacture of one product to another, put your power transmission problems up to Dodge. There is no charge for this service.

When you make Dodge your shop standard you place the whole responsibility upon us for the correct design and installation—the efficient operation and the continuous satisfaction of your entire plant equipment.

We accept this responsibility without reservation and point with pride to the satisfaction of such concerns as the Corn Products Refining Company, The Morgan-Wright Rubber Co., The Colorado Fuel & Iron Co., The American Can Co., The American Sheet & Tin Plate Co., and hundreds of others who have found Dodge products and Dodge installations to be a permanent asset in their production.

Dodge Products are standardized—pulleys, bearings, hangers, etc., built with a distinct relation to each other and to the service they will render when assembled into line and counter shaft.

The utility of any Dodge Product does not end with the suspension of the job for which it is originally bought—this feature alone means the saving of hundreds of dollars a year in almost any plant.

Mechanical men all over the world know Dodge Products to be as new, trouble-proof as machinery can be made. They know Dodge Products approach more nearly the ideal for all conditions of service than any other line they can specify.

You, too, will experience lower-power costs—less disturbance to production and simpler shop accounting when you make Dodge your shop standard.

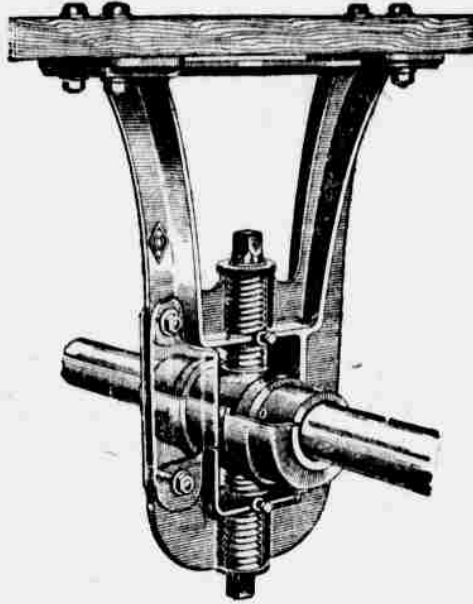

**The combination of
DODGE
ONEIDA and KEYSTONE**

products offers a new era in the world-wide distribution of power transmission products.

Oneida and Keystone products are Dodge built; standardized and interchangeable with other Dodge products.

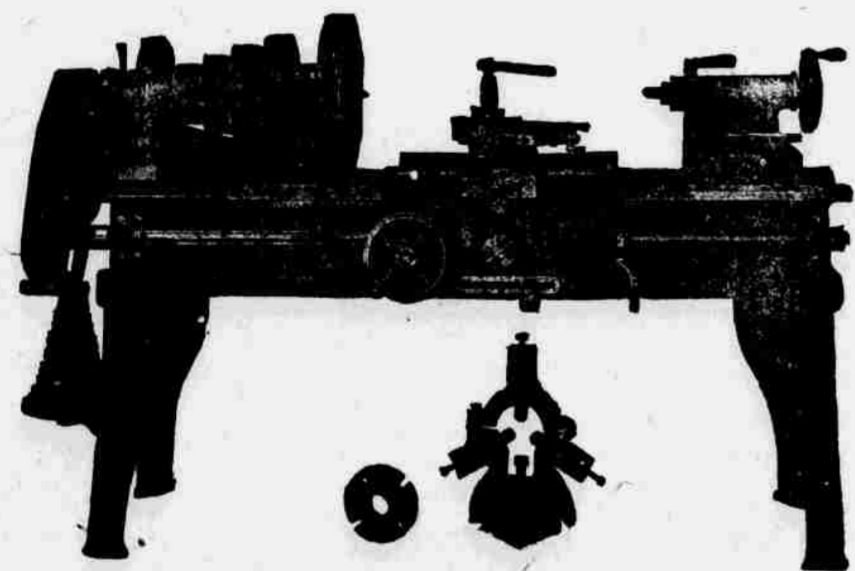
Five hundred complete stock carrying dealers located in every important city and backed by 13 Dodge branch warehouses stand ready to furnish transmission products on the immediate delivery basis.

Dodge Sales and Engineering Co.
Distributors of the Products of the Dodge Manufacturing Company
General Offices and Works: Mishawaka, Indiana
Philadelphia, Cleveland, New York, Chicago, St. Louis, Boston, Atlanta, Pittsburgh, Minneapolis, Dallas, Providence, Seattle, Denver

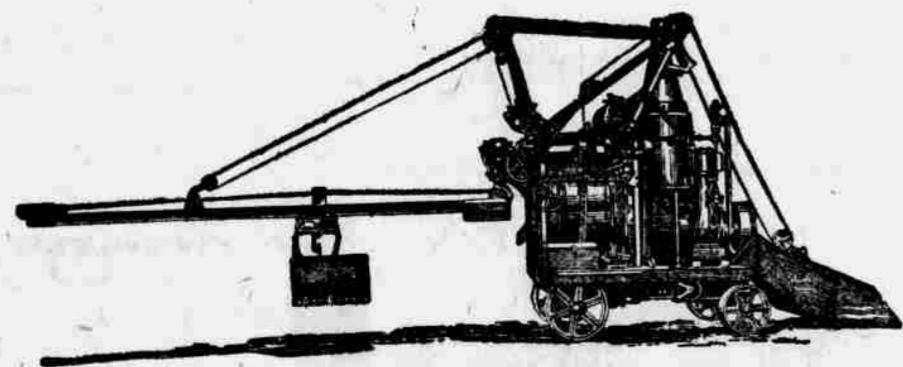



Reproduction of double page advertisement in this week's Saturday Evening Post.

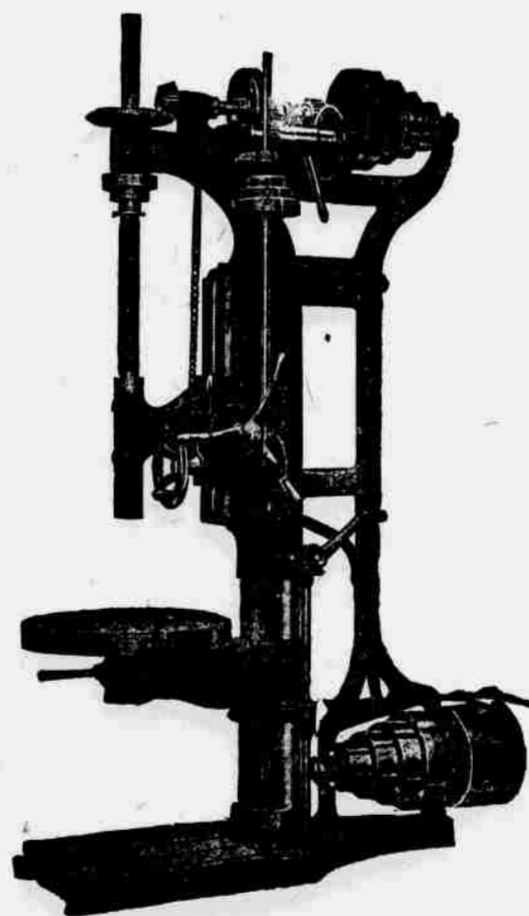
Contractors' Equipment and Machine Tools



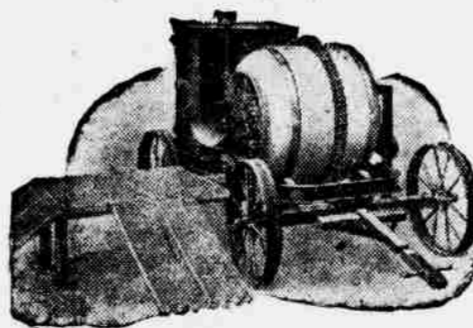
Monarch---Barnes---Sidney
LATHES



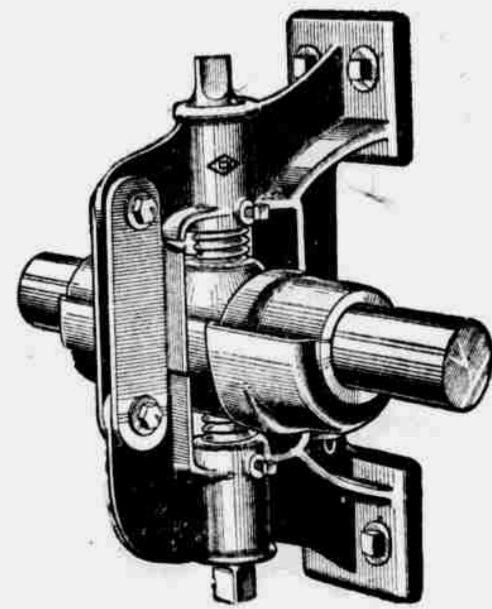
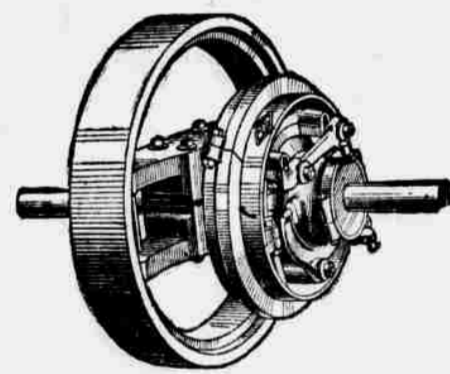
Rex Paving Mixers



Sibley---Silver---Barnes
DRILL PRESSES



Rex Building Mixers



SUNDERLAND MACHINERY AND SUPPLY COMPANY

1006-8-10 Douglas Street. Omaha.