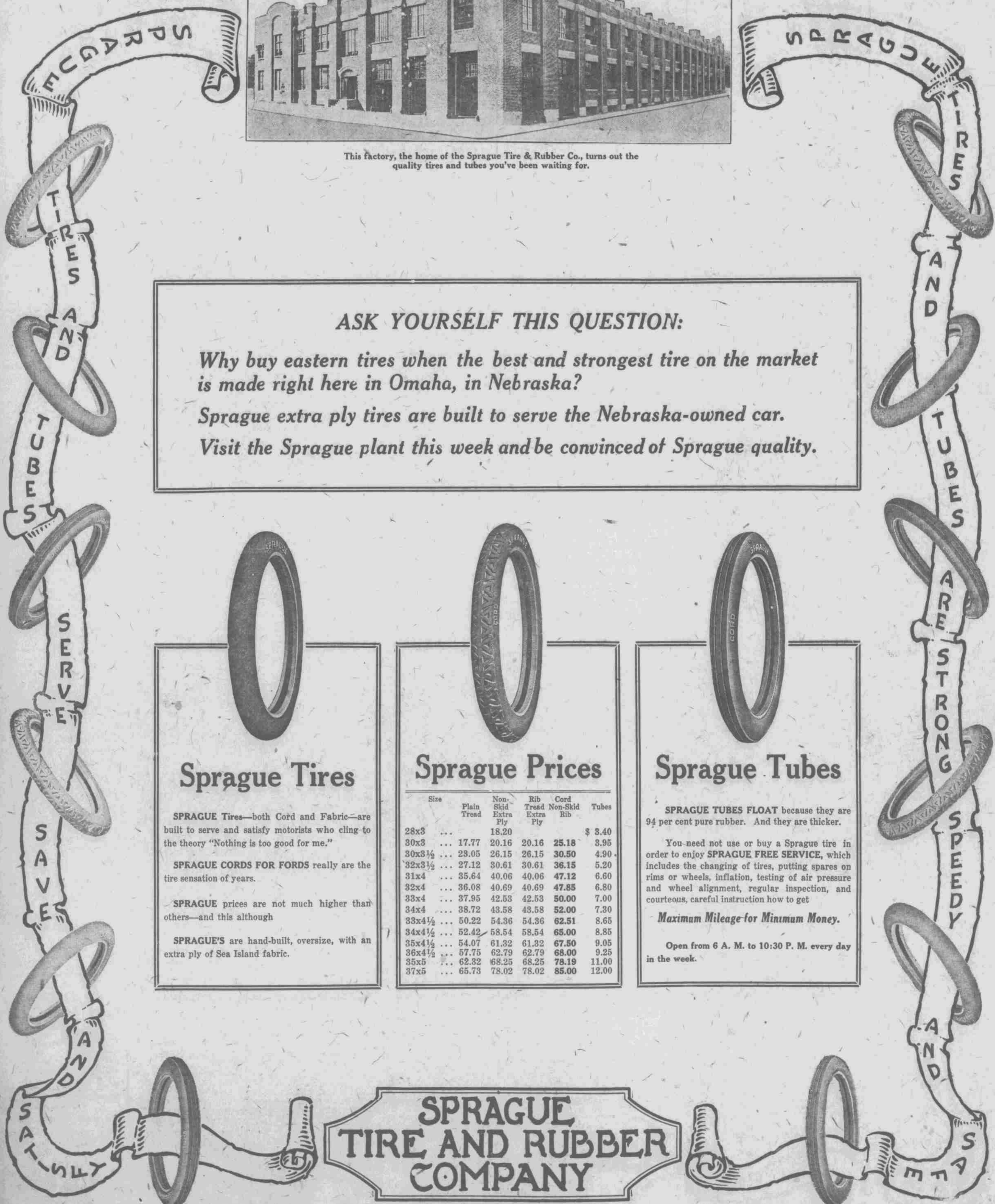




This factory, the home of the Sprague Tire & Rubber Co., turns out the quality tires and tubes you've been waiting for.

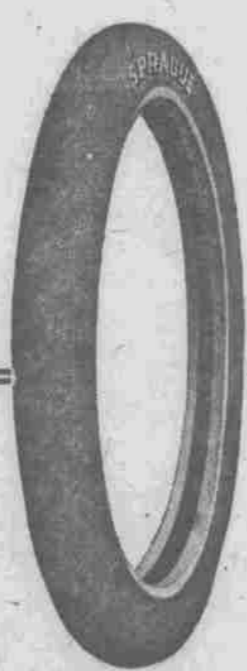


ASK YOURSELF THIS QUESTION:

Why buy eastern tires when the best and strongest tire on the market is made right here in Omaha, in Nebraska?

Sprague extra ply tires are built to serve the Nebraska-owned car.

Visit the Sprague plant this week and be convinced of Sprague quality.



Sprague Tires

SPRAGUE Tires—both Cord and Fabric—are built to serve and satisfy motorists who cling to the theory "Nothing is too good for me."

SPRAGUE CORDS FOR FORDS really are the tire sensation of years.

SPRAGUE prices are not much higher than others—and this although

SPRAGUE'S are hand-built, oversize, with an extra ply of Sea Island fabric.



Sprague Prices

Size	Plain Tread	Non-Skid Extra Ply	Rib Tread Extra Ply	Cord Non-Skid Rib	Tubes
28x3	...	18.20			\$ 3.40
30x3	17.77	20.16	20.16	25.18	3.95
30x3 1/2	23.05	26.15	26.15	30.50	4.90
32x3 1/2	27.12	30.61	30.61	36.15	5.20
31x4	35.64	40.06	40.06	47.12	6.60
32x4	36.08	40.69	40.69	47.85	6.80
33x4	37.95	42.53	42.53	50.00	7.00
34x4	38.72	43.58	43.58	52.00	7.30
33x4 1/2	50.22	54.36	54.36	62.51	8.65
34x4 1/2	52.42	58.54	58.54	65.00	8.85
35x4 1/2	54.07	61.32	61.32	67.50	9.05
36x4 1/2	57.75	62.79	62.79	68.00	9.25
35x5	62.32	68.25	68.25	78.19	11.00
37x5	65.73	78.02	78.02	85.00	12.00



Sprague Tubes

SPRAGUE TUBES FLOAT because they are 94 per cent pure rubber. And they are thicker.

You need not use or buy a Sprague tire in order to enjoy SPRAGUE FREE SERVICE, which includes the changing of tires, putting spares on rims or wheels, inflation, testing of air pressure and wheel alignment, regular inspection, and courteous, careful instruction how to get

Maximum Mileage for Minimum Money.

Open from 6 A. M. to 10:30 P. M. every day in the week.

**SPRAGUE
TIRE AND RUBBER
COMPANY**