

# ESSENTIALS OF CAR ALL OWNERS OUGHT TO KNOW

### Care of the Rims, Air Hose Trouble and How to Look After Auto.

Every owner who is particular about his car should examine his rims and tires at least once a week. Few owners realize that a rim with its tire can creep around the wheel if the shoulders on the wheel which hold the demountable rim are the least bit worn. This occurred recently and was noticed only because the valve stem came through the wheel hole at an acute angle.

This was caused by the rim and tire creeping around, thus tending to pull the valve stem out of its place. If the valve stem is held firmly by means of a cap, then the strain falls on the lower portion of the inner tube surrounding it. In the instance in question the pull was so great that the valve stem was cut almost in two. Also in tightening the rim lugs be sure that you tighten in the correct order. If they are tightened one after the other in order around the rim there is apt to be too much space on one side and too little on the other. Tighten one lug, then the one which is nearly opposite and so on around.

### Have Good Hose.

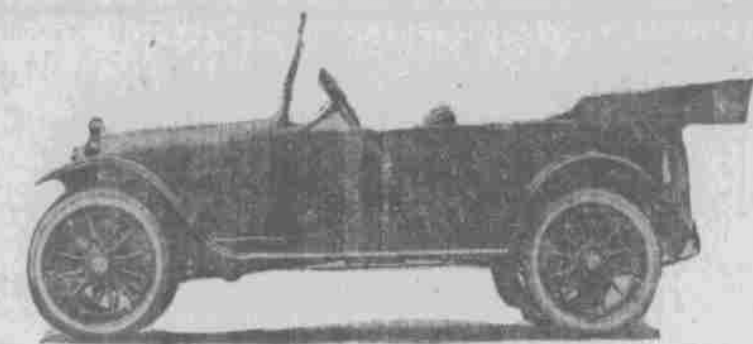
Those who are in doubt as to whether their engine-driven tire pump forces oil through the hose should examine the end of the latter. Usually this hose has a rubber lining, and if oil is being pumped, the lining becomes softened, perhaps to such an extent that it will not hold to the nipple. In cheap hose it is difficult to again attach the nipple, even though wire is used as binding, because the first operation of the pump blows the hose away from its connections. The remedy lies either in getting a good grade of hose or in having the pump piston and rings examined for leakage.

A great many cars are fitted with battery ignition in which the distributor arm is removable. Owners of such cars can, by removing the arm, make car stealing possible only in two ways—towing it away or fitting another arm. The arm is removed by simply unclipping the distributor cover to which the wires are attached. There usually is but one way in which the arm will fit, so there is no need to worry about replacing it.

### Watch the Headlight Glasses.

Some of the light diffusers or devices intended to redirect the rays of light are designed to be effective only when in a certain fixed position. Vibration may so loosen the glass in the rim that the glass will be permitted to creep around, in which case the whole scheme fails. Not all headlights have means for anchoring the glass permanently, so it is a matter for the owner's attention to see that the glasses are properly fastened in place. If screws are used, it might do to insert a lock washer under each one.

It has come to our attention re-



Latest Model Hupmobile



Nash Valve-in-Head



Elcar Touring

cently that some drivers are using ammonia solution to brighten up the hood when the latter has become dull. This is bad practice, though the immediate results seem to be good. Ammonia destroys the finish and should not be used; in fact, body makers and varnish concerns give strict instructions even to keep the car away from stables and barns so that the ammonia from the manure will not injure the body finish.

### Notched Rotary.

In most of the battery ignition systems in use there is a notched rotary against which presses a so-called latch or tripper, to which a short spring is attached. When the latch becomes worn to some extent the system may fail. It is suggested that owners carry along a spare latch. It is a simple matter to remove and replace a latch, and since there is but one way in which it will fit, the operator can hardly make a mistake.

The owner who is not diligent and neglects the parts he does not see or which do not give trouble usually may find sometime that upon starting one of the wheels becomes locked, even though the brake pedal and lever are free. This is due to the fact that there is so much play in the brake linkage and when the hand-brake lever is released it merely takes up the play, leaving the unlubricated mechanism set in holding position. This happened recently and a hammer had to be used to loosen the brake mechanism.

If you should have fuel feed trouble which you cannot explain, it may be caused by pieces of solder in the gas tank.—Motor.

# DUAL TIRES FOR TRUCKS POPULAR IN OLD COUNTRY

### The Uneven Pavements and Crowned Roads Make Them Impractical in United States.

One feature of truck operation which has found great value in Europe, but which is believed by the United States Tire company to have very little chance of any general adoption here is the use of dual pneumatic tires.

The United States Tire company's experts are of the opinion that the large single pneumatic tire meets all the requirements, and that the use of the dual tire is decidedly unsound practice.

# Officers of Service Truck Co.



A. R. Stouffer, Secy. H. S. Whitehead, Vice Pres.

even pavements or crowned roads strong enough to carry the full most of the weight of the car many times rests on one, instead of both, of the pair. The one tire is not

should not be used is that it is a practical impossibility to inflate the pair to exactly that point where the load will be equally distributed between them, and undue wear again results.

### American Idea.

The big pneumatic is purely an American development with the United States Tire company, a pioneer in the field. European tire makers, so far as can be learned, were never successful in producing satisfactory pneumatics of the large truck sizes, and contented themselves in meeting the requirements for additional strength by the simple expedient of using two smaller tires.

### Sidewall Outs.

One of the commonest places for frozen ruts and sharp pieces of ice to jab and slash a tire is that portion of the casing between the rim and the sidewall. The only remedy for the trouble is to drive carefully, avoid frozen ruts and keep the tires always pumped up to the proper pressure.

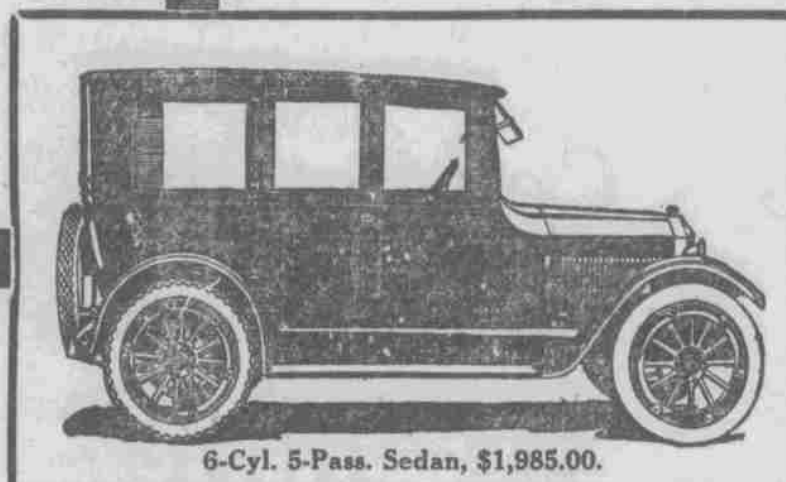
# Buick Firm to Have Two Complete Shows Here During the Week

Incident with the exhibition of the models of touring cars and sedans at the automobile show, the Nebraska Buick Automobile company has planned an elaborate occasion of formality in the opening of their new building at Nineteenth and Howard streets the afternoon and evening of Wednesday, March 12.

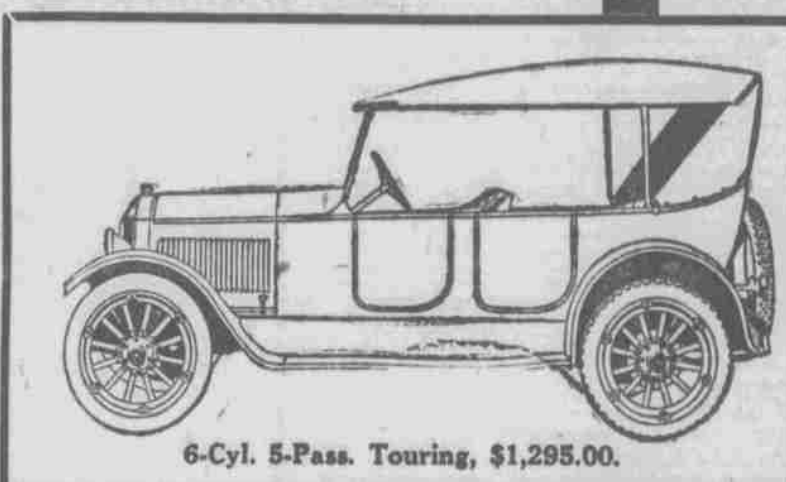
Public invitation has been extended by Lee Huff and J. Edward Kaufman, manager and assistant manager, respectively, of the company. Buick experts will be on hand to receive the public. There will be music and entertainment aplenty, to make the opening an occasion of real interest. Souvenirs will be distributed. The entire building, of up-to-date architecture and beauty, a fit setting to the Buick car, will be open for the inspection of the public on that day.

There are six artesian wells on the property of Willys-Overland, Inc., in Toledo. Each supplies an average of 3,000 gallons per hour.

# The Luxurious Light Six



6-Cyl. 5-Pass. Sedan, \$1,985.00.



6-Cyl. 5-Pass. Touring, \$1,295.00.

# Scripps-Booth

### A Quality Six for Discriminating Buyers

Motorists who desire the most distinctive in an automobile and who also insist on genuine built-in quality, with proven economy, will find that the Scripps-Booth is the car that comes up to their specifications and meets their utmost requirements.

And the price, too, will be a feature with those buyers, for they will be actually surprised at the lowness of the figure put on the exquisitely finished cars of the Scripps-Booth line.

Women motorists desiring the greatest comfort in motoring are insisting on enclosed cars. The beautiful enclosed models of the Scripps-Booth surpass in elegance of finish, fineness of appointment and beauty of appearance cars that sell for hundreds of dollars more.

The man who desires to secure the best will do well to investigate the various models of this quality car. A motor car which in appearance and performance excels the cars that you pass on the street and yet operates at a surprisingly low cost.

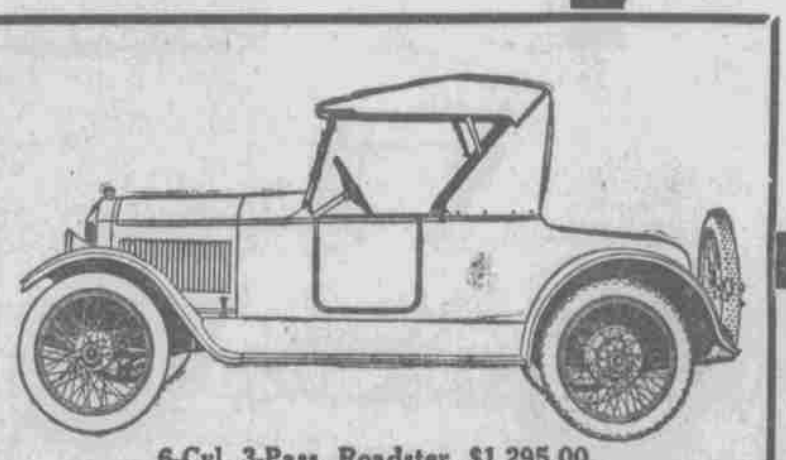
All models on display in our showrooms this week. A most cordial invitation is extended to the motoring public to visit this exhibition.

# Hanson-Tyler Auto Co.

Joe Elfred, Mgr.  
2514 Farnam St. Omaha, Neb.  
Ft. Dodge, Sioux City, Webster City, Ia., and Sioux Falls, S. D.



6-Cyl. 4-Pass. Coupe, \$1,985.00.

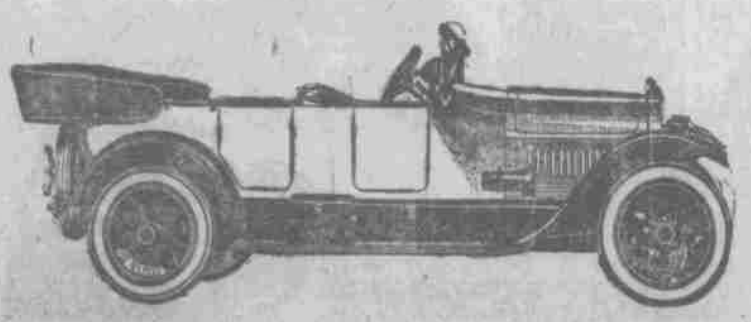


6-Cyl. 3-Pass. Roadster, \$1,295.00.

Stage Exhibit Omaha Auto Show



STUTZ THE CAR of Quality



HAARMANN-LOCKE MOTOR CO.  
2417 Farnam Street