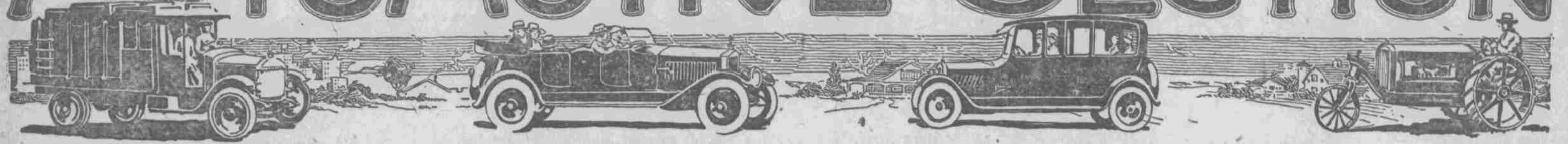


AUTOMOTIVE SECTION



PEERLESS CARS REACH SHOW ON EXPRESS TRAIN

Besides Show Autos Hannan Will Have Seven-Passenger Touring at Salesroom.

Two models of the Peerless Eight, distinctive for beauty, power and economy of operation, arrived in Omaha late last night by express, according to C. R. Hannan, president of the Western Motor company, 2047 Farnam street, representative of the car. Because of the urgent demands made upon factory officials by Peerless dealers throughout the country, it has been difficult to get shipments of the cars. Mr. Hannan will have the Peerless Sedan, unique in heavy upholstery and novel in body design, on exhibition at the automobile show. The seven-passenger touring will be kept at the salesroom. Benjamin Lennerd, factory repre-

sentative of the Peerless Motor company, Cleveland, is in Omaha this week to attend the show. "Low cost of upkeep and economy of operation stand out pre-eminently in the driving of the Peerless," Mr. Lennerd says. "This year will be a great period for the motorist; there will be a wide market for all types of cars. The autoists of today is looking for a car that insures low cost of upkeep." Mr. Lennerd is traveling representative of the motor company, covering territory from Winnipeg, Canada, to Galveston, and from Chicago to San Francisco.

Banner Given by Uncle Sam Is Exhibited by H. Pelton

Omahans will have an opportunity to see the prize banner, donated by the government to the champion builders of Liberty motors. The huge attraction reading, "Champion Liberty Motor Builders," sways in the breeze in front of the H. Pelton Motor company, Twenty-first and Farnam streets, representatives for the Marmion car in this territory. The Marmion factory produced the motors at full capacity, and at the signing of the armistice still had the banner in their possession. It will remain in Omaha during the Automobile show.

General Sales Manager of Racine Rubber Co.



R. Y. Cooke.

Nine Millions More in State Banks Now Than Year Previous

From a Staff Correspondent. Lincoln, Neb., March 8.—During February 942 state banks in Nebraska reported to the state banking board and according to this the state now has one state bank for every 1,317 people, the largest per capita of any state in the union.

There are, in addition to the state banks 186 national banks, 73 building and loan associations and 26 trust companies in the state. Nineteen new state banks have been organized since the last report, all of which have charters outstanding, but which have not yet opened for business.

Compared with the report of February 25, 1918, a report for January 28, 1919, shows these changes: Banks reporting increases, 12. Deposits, increase, \$9,274,637.04. Loans, increase, \$28,406,199.56. Cash reserves, decrease, \$75,132,650.00. Capital-surplus and profits, increase, \$7,151,245.93. Depositors' guaranty fund, increase, \$227,000.00. During 1918 Nebraska citizens bought and paid for Liberty bonds through Nebraska banks, \$158,197,690, and bought and paid for \$19,845,110 worth of war savings and thrift stamps through the banks and postoffices.

Always Boosting for Omaha and Auto Row



J. C. Gerspacher, of the Toozer Gerspacher Co.

PRACTICAL PARAGRAPHS

By S. P. La Due

Wabbling Wheels.

It is wise to make an occasional examination of the front wheels to see whether they are wabbling. This may be done by jacking up each wheel and revolving it and walking away a few feet to see if it wabbles as it revolves. By having someone else drive the car the own-

er can very quickly see if the wheels are shaking by taking his stand a short distance down the street. Some times the wheel itself may run true, but the rim and tire may be incorrectly mounted so as to give the impression that the whole wheel is wabbling.

Windshield Supports.

On many cars the windshield is supported by steel arms which protrude through the cowl and are fastened underneath by a nut and lock nut. Some times these nuts work loose through vibration, with the result that the windshield is allowed to move slightly. The first sign of this trouble is seen in cracked finish in the vicinity of the windshield supports. When the owner makes

his regular periodic inspection for loose nuts and bolts these windshield nuts should not be forgotten.

Battery Sediment.

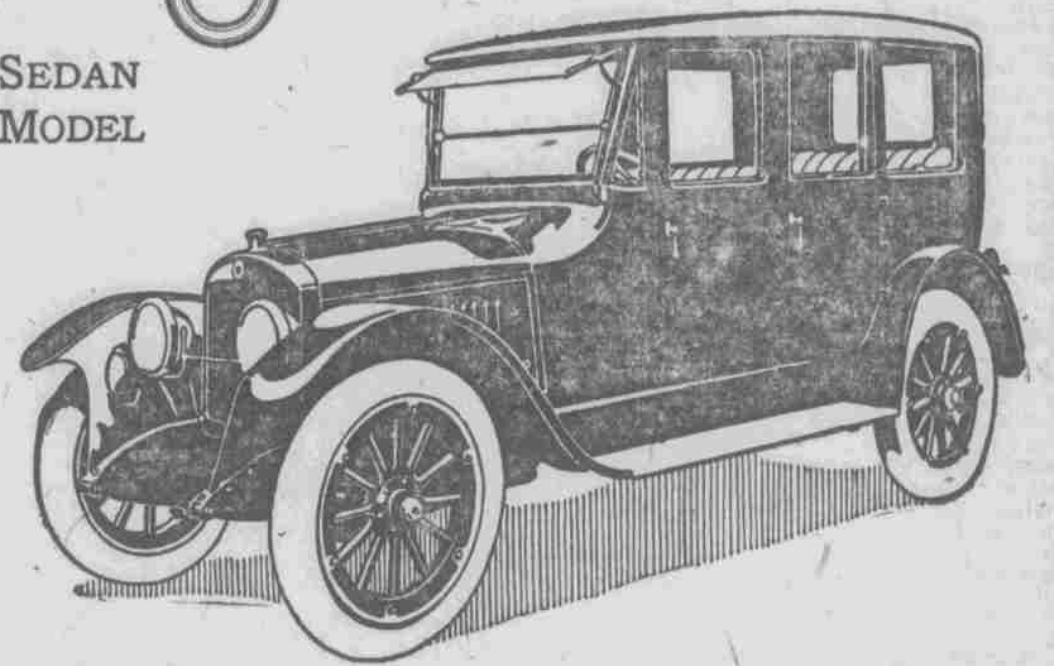
While sediment forms in the bottom of storage battery jars, it will seldom accumulate in such quantity as to reach the plates. Nevertheless whenever a cell is taken apart for any reason this sediment should be carefully washed out.

Carbon Dust.

In the generator where carbon brushes are used a certain amount of fine carbon dust is inevitably deposited in the bottom of the generator. This should be blown out with compressed air whenever the periodic inspection is being made.

STANDARD

SEDAN MODEL



What You See—

You see a car of beautiful, straight lines, 2 3/4 inches lower than last year's model but with the same headroom.

A car of attractive and artistic style and luxuriously fitted with comforts and conveniences that invite you to step inside and enjoy them. Artistically and practically the new Standard 8 Sedan represents the newest and best ideas in motor-car design.

What You Know—

Your pleasure in the appearance of the Standard 8 will lead you to a closer examination of the mechanical and structural features. You have confidence in the car because you know it is built by an immense organization. The Standard 8 is the product of the Standard Steel Car Co., Pittsburgh, Pa.—builders of world-famous railroad rolling stock.

Behind the Standard 8 are the immense resources, skill, and experience of the Standard Steel Car Company.

See the New Sedan at the Show, Space C—Annex.

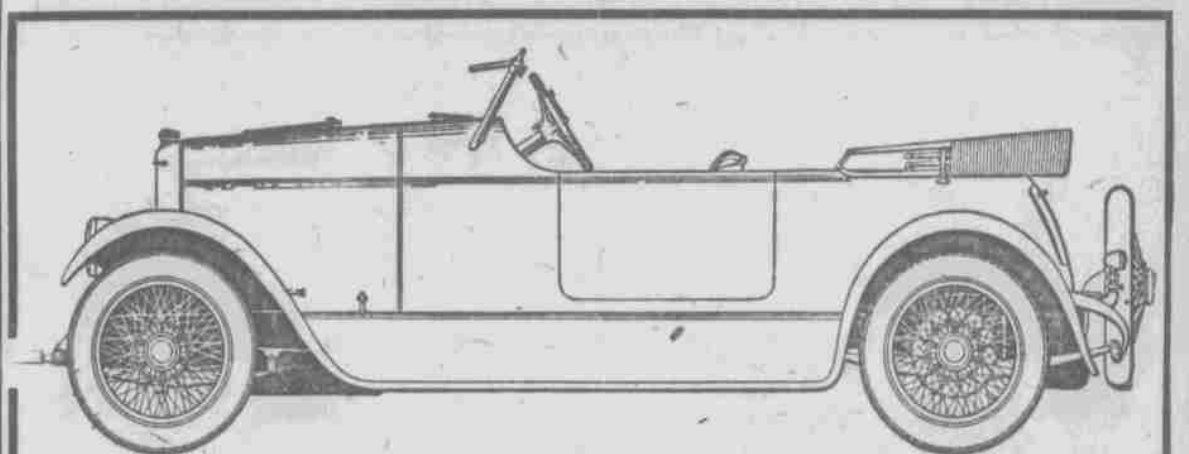
Standard Steel Car Co., Pittsburgh, Pa.

KEYSTONE MOTOR CORPORATION

2203 Farnam Street.

OMAHA

Telephone Douglas 2181.



The eight cylinder motor with 80 less parts means simplicity, exceptional performance, with minimum cost of maintenance.

The New Home of the

APPERSON

2027-29 Farnam St.

Omaha

Apperson-Nebraska Company



"Put it on a Delivery Route"

That's the way to test the new Sterling motor masterpiece—add it to your equipment and make it conquer the worst difficulties of your transportation problem. Put it over the roughest roads—make it defeat the obstacles of delivery that stand in your path. It will prove a master product—for economical motor transportation.

Make the Sterling Prove Its Worth

For years, this oldest truck making organization has constructed the Sterling to maintain reputation and merit and win the permanent applause of every user.

Every driving part embodies a liberal safety factor even in excess of generous rating capacity.

Let us demonstrate *how* and *why* and *where* it will fit in your business with profit.

Manufactured and Guaranteed by

STERLING MOTOR TRUCK COMPANY, Milwaukee, Wisconsin

Builders of Motor Trucks Exclusively for Ten Years

H. BECKER

Distributor Nebraska and Western Iowa

Davenport Garage, 18th & Davenport Sts.

Omaha, Neb.

Phone Douglas 3573

The Merit Points that Give the Sterling Truck Power

Three-point Flexible Motor Suspension

The Sterling is truly the one flexible truck—adjusts itself at once to all road curvatures and depressions, without affecting in the slightest any part of the power or transmission mechanism.

V-Shape Multiple Disc Clutch

The steel and copper plates are so uniquely shaped and specially designed that there is extreme flexibility even in starting—and positive control. The Sterling Clutch is a wonder. The plates operate in a complete bath of oil.

Selective Clutch Type Transmission

Sterling transmission costs over 100% more than the transmission ordinarily used. But we consider the extra cost well spent because the ordinary transmission couldn't perform to Sterling standards.

Gears Always in Mesh

This means you can shift gears on a Sterling—on a level or grade without grinding the gears or making a noise like artillery in action. Gear replacements are banished.

Pressed Steel—Wood Inlaid Frame

The wood-lined frame—an exclusive Sterling feature—adds strength, acts as a cushion, absorbs vibration, prevents crystallization. Try hitting a stone with a steel-handled hammer, and then with a wood-handled hammer. You'll appreciate the difference between the Sterling wood inlay frame construction and an all-metal frame.

Long and Wide Springs

What other truck has a rear spring as long and wide as that of the Sterling? Then consider that this means extra speed without excess vibration or depreciation. A money-saving feature.

Magneto—Dual Automatic Spark Advance

The Sterling has an automatic spark control. No back "kick" or broken arms—less carbon—practically no chance of overheating—gasoline economy—easier in starting—positive timed ignition at all motor speeds—maximum efficiency all the time—not just when you think to place the spark lever in proper position. It means the driver cannot waste the gasoline.

Here Are Added Advantages

- Curtains for the driver's cab.
- Windshield for protection of driver.
- Wearing parts are bronze bushed.
- Radiator guard—sure protection.
- Stewart Vacuum Fuel Feed Tank—recognized as standard.
- Lunkenheimer Primer.
- Cushioned Draw Bar for Trailer and Bumper.

Sterling TRUCKS