



MRS. ANGIER B. DUKE, WHO IS ACTING IN THE CAPACITY OF WAITRESS IN THE BIRD CAGE TEA ROOM, ONE OF THE DEPARTMENTS IN THE RED CROSS SHOP. THE ENTIRE PROCEEDS GO TO THE COMFORT OF WOUNDED SOLDIERS AND SAILORS IN THE VARIOUS BASE HOSPITALS.



CARDINAL AMETTE, ARCHBISHOP OF PARIS, ENTERING THE CATHEDRAL OF NOTRE DAME, WHERE THE TE DEUM WAS SUNG IN HONOR OF PEACE.



GEORGES CLEMENCEAU, FRENCH PREMIER, PRESENTED WITH A BOUQUET OF FLOWERS AT A DEMONSTRATION IN PARIS.

(Photographs copyrighted by Underwood & Underwood, Western Newspaper Union and Central News Photo Service.)

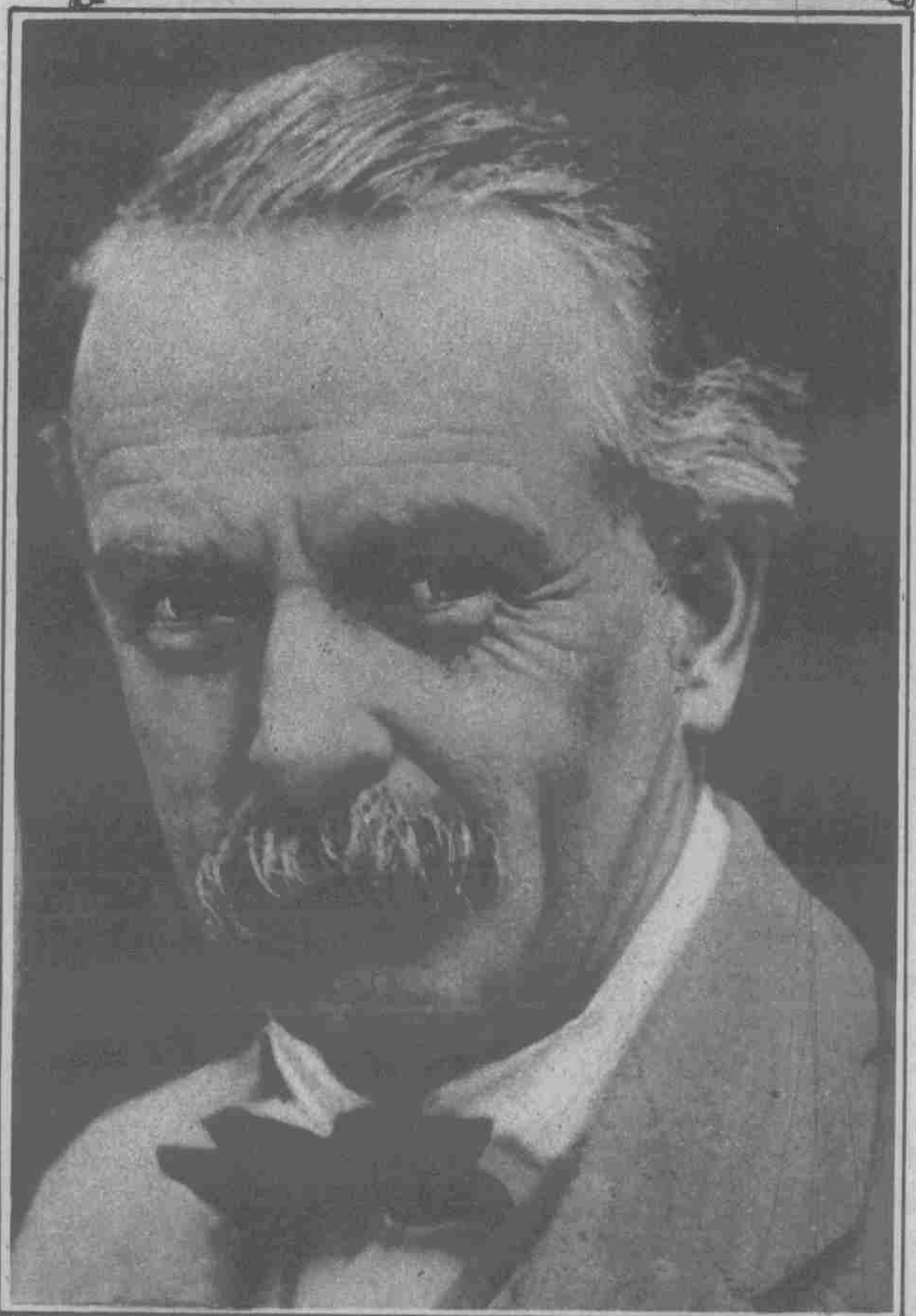


LADY TOWNSHEND, WIFE OF GENERAL TOWNSHEND, THE HEROIC DEFENDER OF KUT. A NEW PORTRAIT OF LADY TOWNSHEND IN THE UNIFORM OF THE FRENCH ARMY, OF WHICH SHE IS A STAFF OFFICER. SHE ORGANIZED FIFTEEN CANTEENS FOR FRENCH AND BRITISH TROOPS IN LORRAINE AND WAS OFTEN UNDER FIRE HERSELF. THESE CANTEENS ARE SOLELY CONTROLLED BY WOMEN WHOSE PRESENCE ADDED GREATLY TO THE MORALE OF THE TROOPS.



JACK'S VICTORY SMILE.

OFFICIAL
SMILE
OF THE
ENGLISH
NAVY
AND
OTHER
PLEASING
PERSONALS
FROM
AROUND
THE
WORLD



PREMIER LLOYD GEORGE OF ENGLAND.

at
the
to-
deck
jets
istle
for
ver-
right
anti-
and
was
no-
nial
was
his
ostly
sent-
time
and
es.
the
and
way,
to
The
deep
id.
ach."
the
it is,
ance,
rbor
ber-
ted a
eni's
wind
snow
port
even
wind
lurry
and
the
her's
clear
hour
le to
The
icked
d for
was
touth
is
light
Wil-
rbor
with
ining,
be-
those
Paris
shore
and
at in
party
sue-
four.)
ist
y be
weak
wells
and
inted
the
most
which
know
ve is
feel-
ne to
great
per-
only
for
When
they
sue-
long
each
ther's
love
it
is